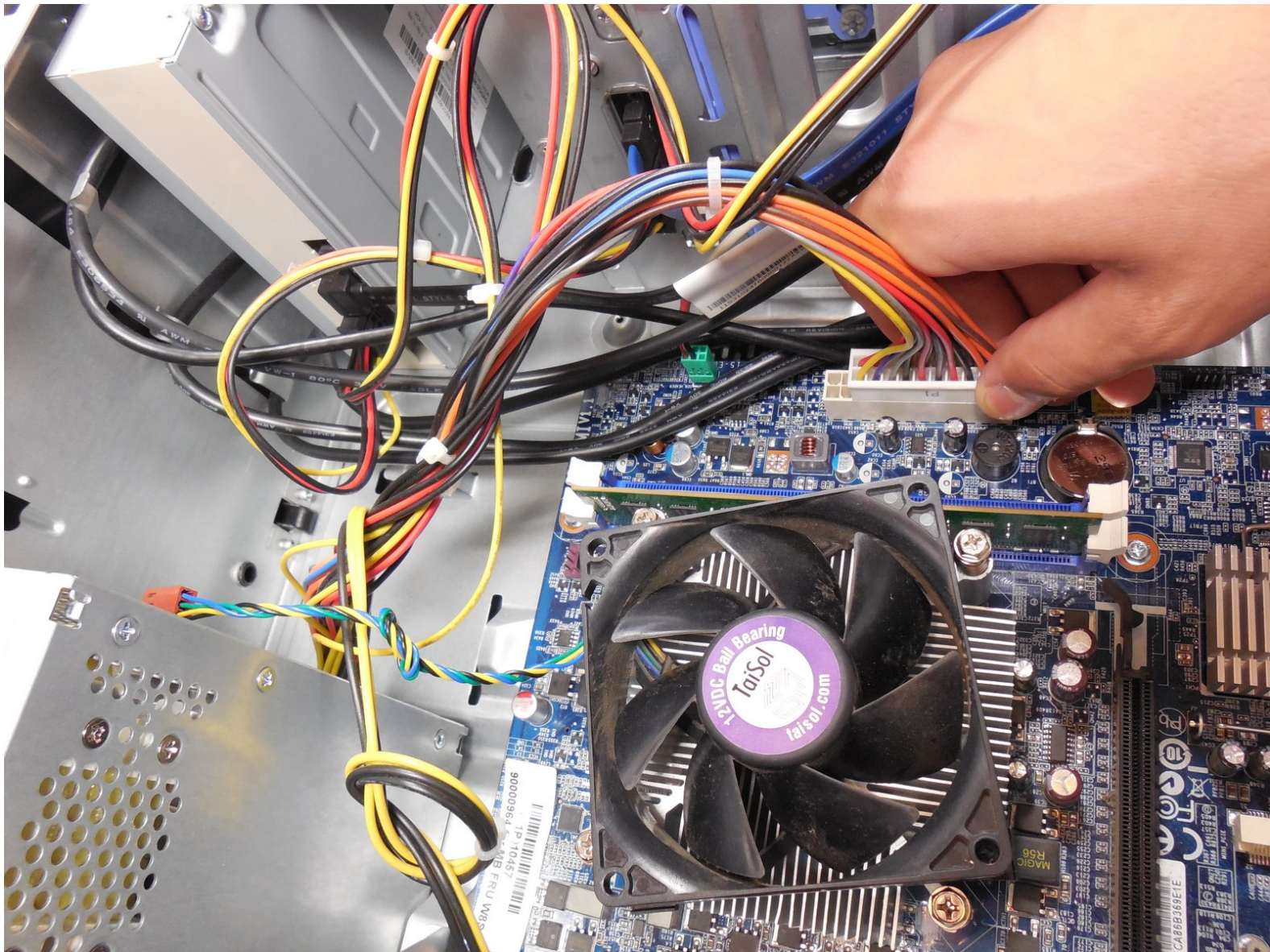




Lenovo IdeaCentre K410 Power Supply Unit Replacement

This guide will show the steps to remove the Power Supply Unit. You may need to replace the PSU if your computer doesn't power on or it goes to sleep and doesn't wake up.

Written By: Timothy Grebe



This document was generated on 2019-09-23 08:56:16 AM (MST).



TOOLS:

- [Phillips #2 Screwdriver](#) (1)
-

Step 1 — Side Panel



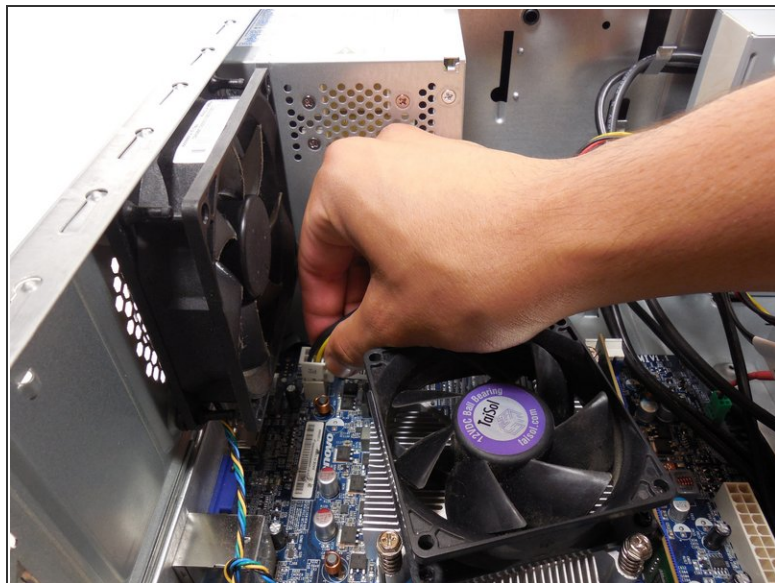
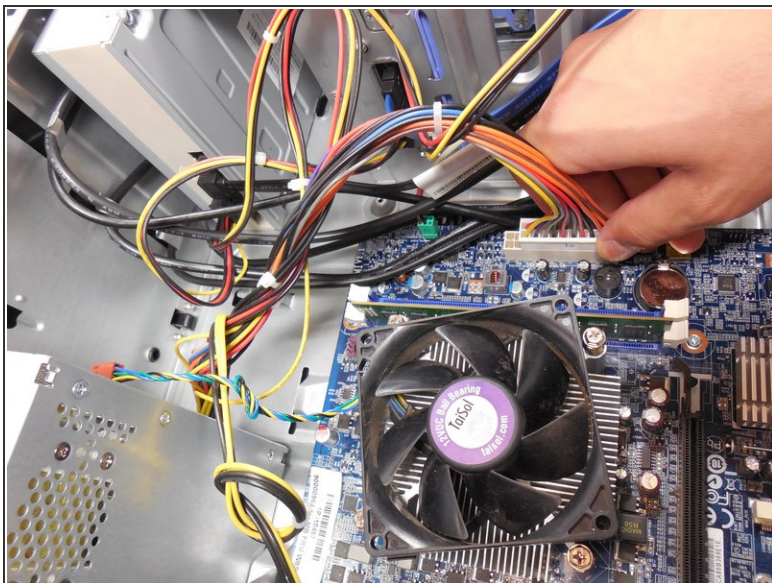
- Lay the computer down on its side as shown.
- Remove the two 14mm screws shown. The screws are loose enough to unscrew with your hands.

Step 2



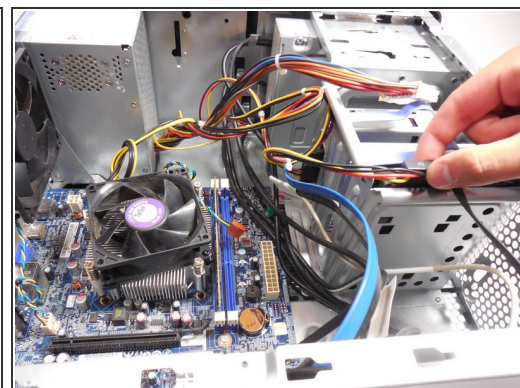
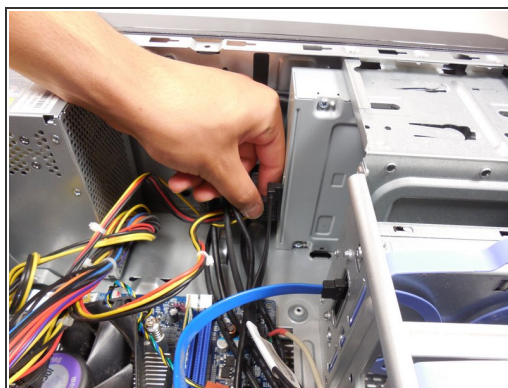
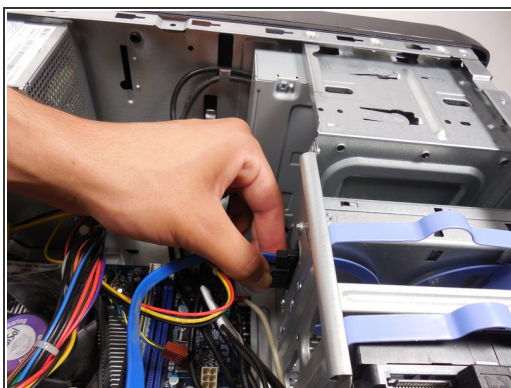
- Gently slide the side panel straight back and remove from the computer.

Step 3 — Power Supply Unit



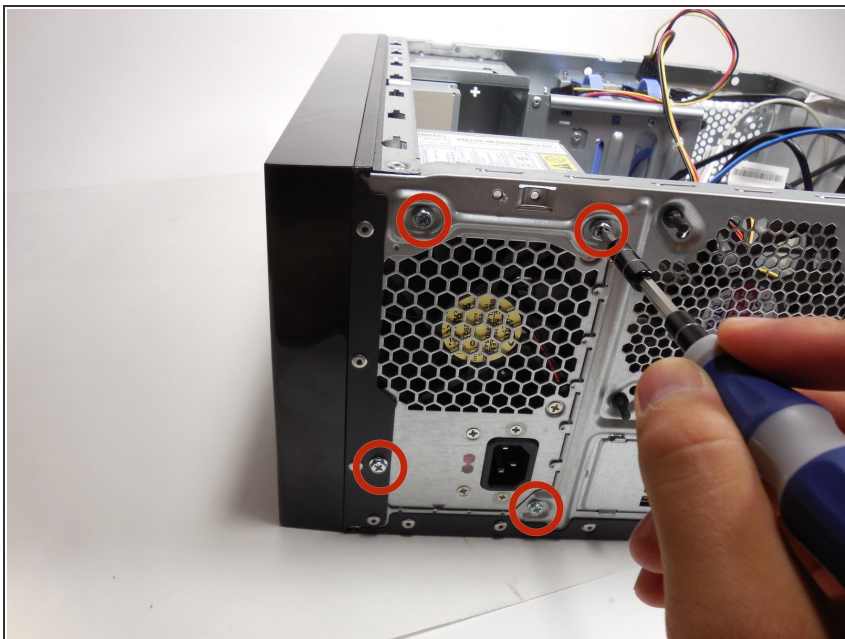
- Unplug both sets of wires attaching the power supply unit to the motherboard.
- ⓘ The largest connection requires a significant amount of force to be removed.

Step 4



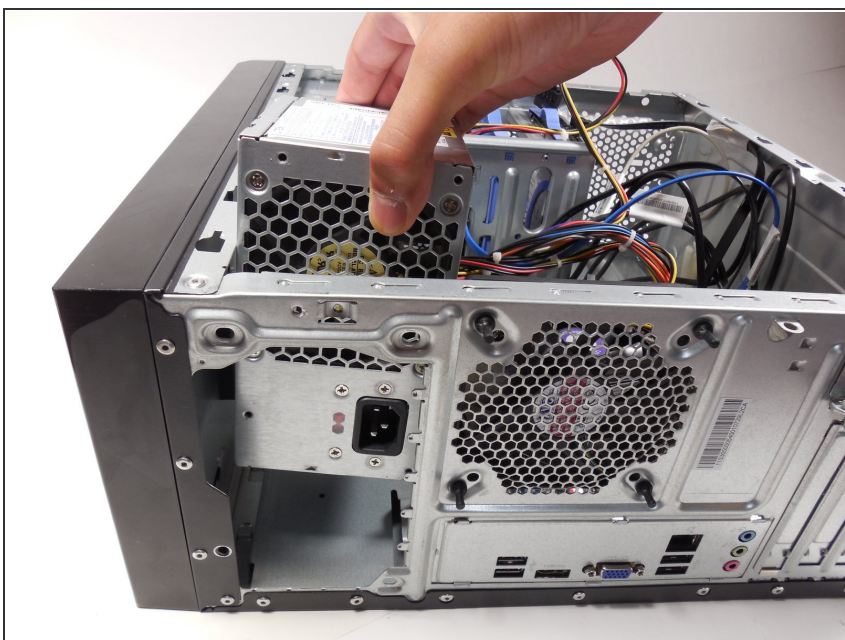
- Unplug all cords attached to the optical drive and hard drive.

Step 5



- Using the Phillips #2 driver, unscrew the four 8mm screws attaching the power supply unit to the outside of the computer.

Step 6



- Remove the power supply unit by pulling away from the screw side and then out.

To reassemble your device, follow these instructions in reverse order.