



Lenovo IdeaPad 100s-14IBR WiFi/ Bluetooth Card Replacement

This guide will help the users fix issues with the WiFi/ Bluetooth card that is found in the Lenovo IdeaPad 100S-141BR.

Written By: Bin Feng



INTRODUCTION

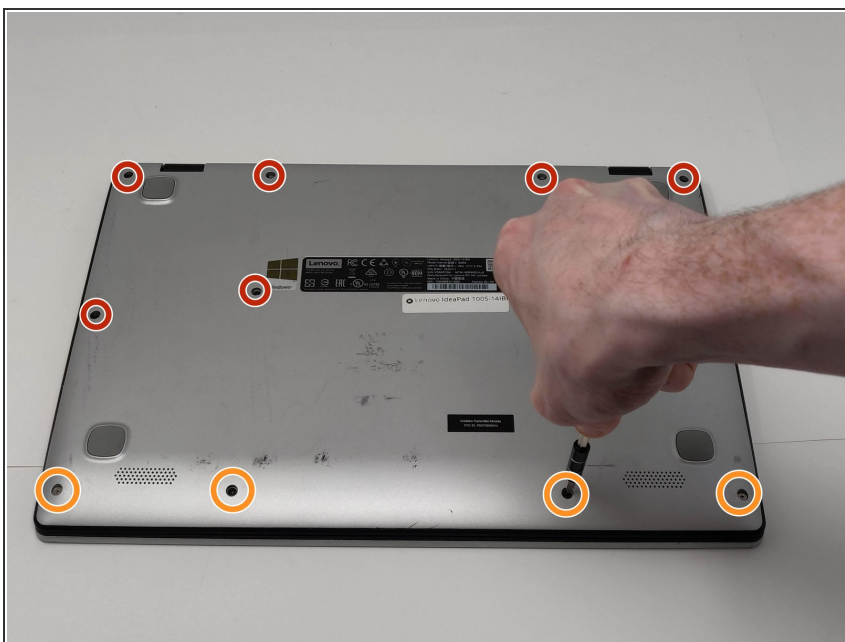
This guide will help the users fix issues with the WiFi/ Bluetooth card that is found in the Lenovo IdeaPad 100S-141BR.



TOOLS:

- [Phillips #00 Screwdriver](#) (1)
 - [Spudger](#) (1)
-

Step 1 — WiFi/ Bluetooth Card



- Remove the eight 4mm PH00 screws.
- Remove the four 2mm PH00 screws.

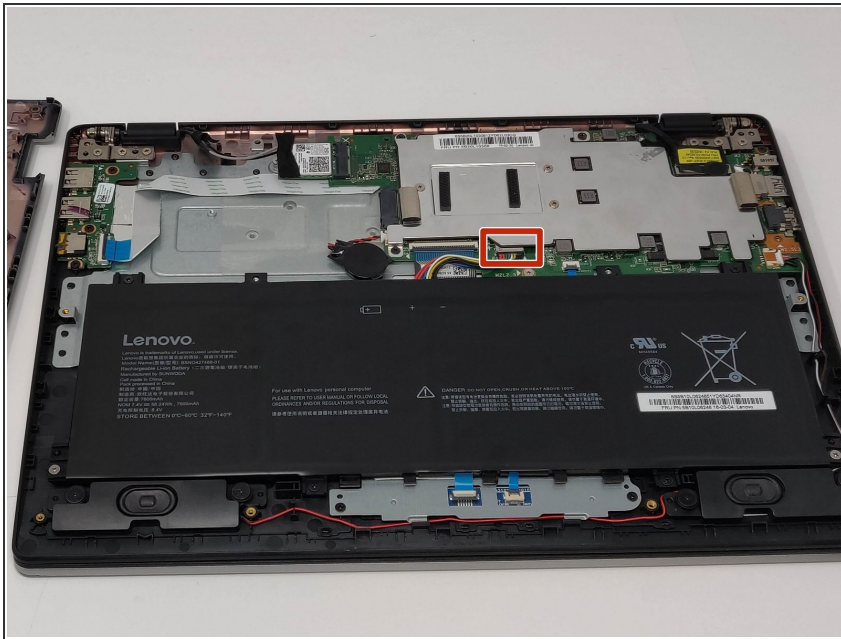
Step 2



- Use the nylon spudger to loosen the back cover from the back of the device.

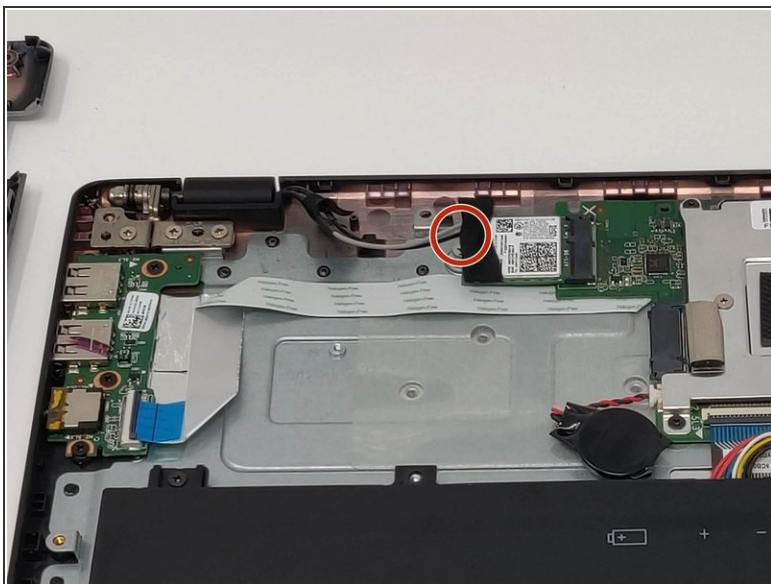
⚠ You may hear a bit of a snapping sound, but this is normal.

Step 3



- For safety reasons, disconnect the wires connecting the battery to the motherboard with the nylon spudger.

Step 4



- Remove the tape and unscrew the single 2mm PH00 screw.
- Pull out the current WiFi/Bluetooth card, unplugging the two wires connected to it.

To reassemble your device, follow these instructions in reverse order.