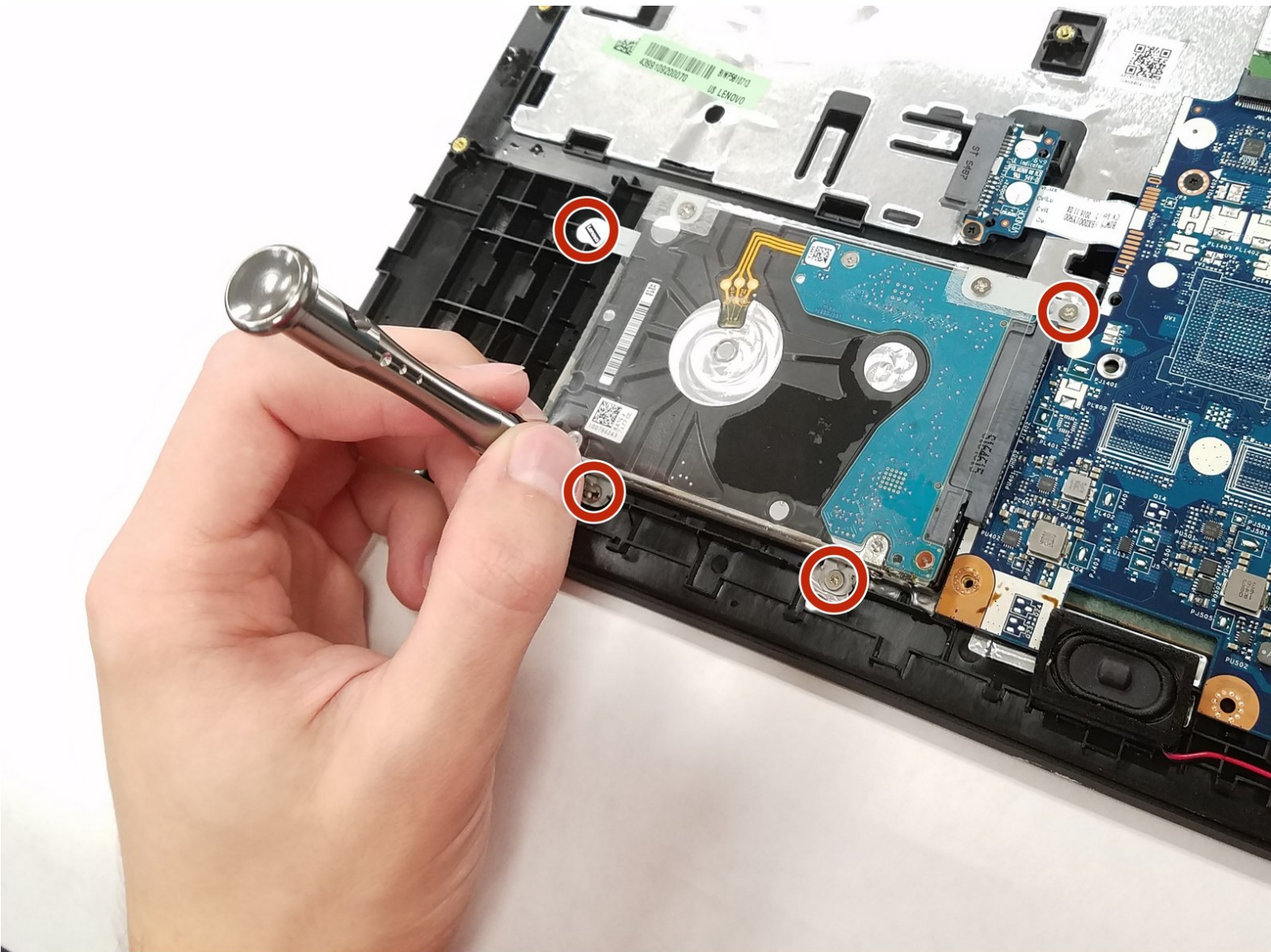




Lenovo IdeaPad 110-15ISK Hard Drive Replacement

Replace your broken or malfunctioning inner HDD hard drive.

Written By: Jakub Szark



INTRODUCTION

If your laptop does not load past the Lenovo loading screen, the wheel spins endlessly, or your laptop displays a blue screen with an error message similar to 'Your PC ran into a problem and needs to restart' the Hard Drive could be damaged. This guide will walk you through how to replace the damaged or malfunctioning Hard Drive.



TOOLS:

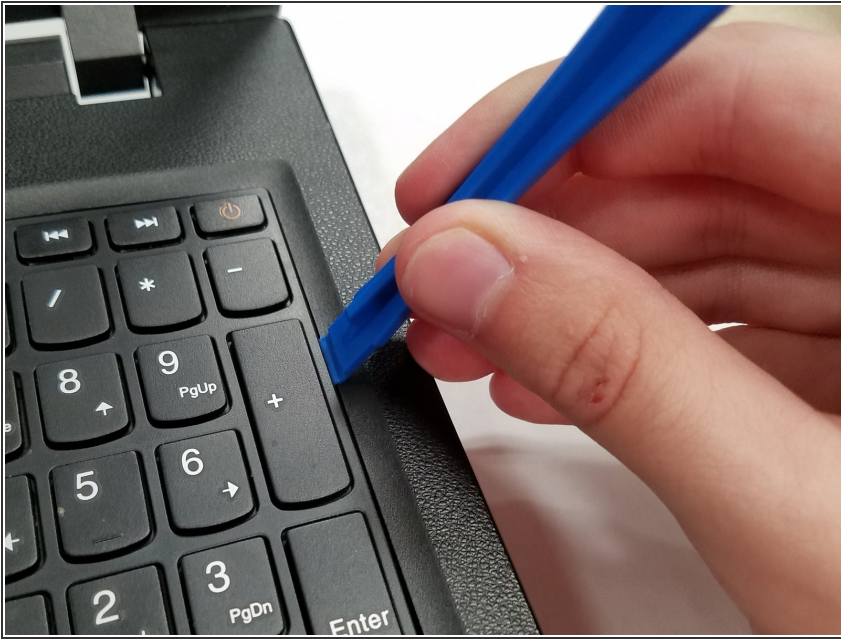
- [Spudger](#) (1)
- [Phillips #1 Screwdriver](#) (1)
- [iFixit Opening Tools](#) (1)



PARTS:

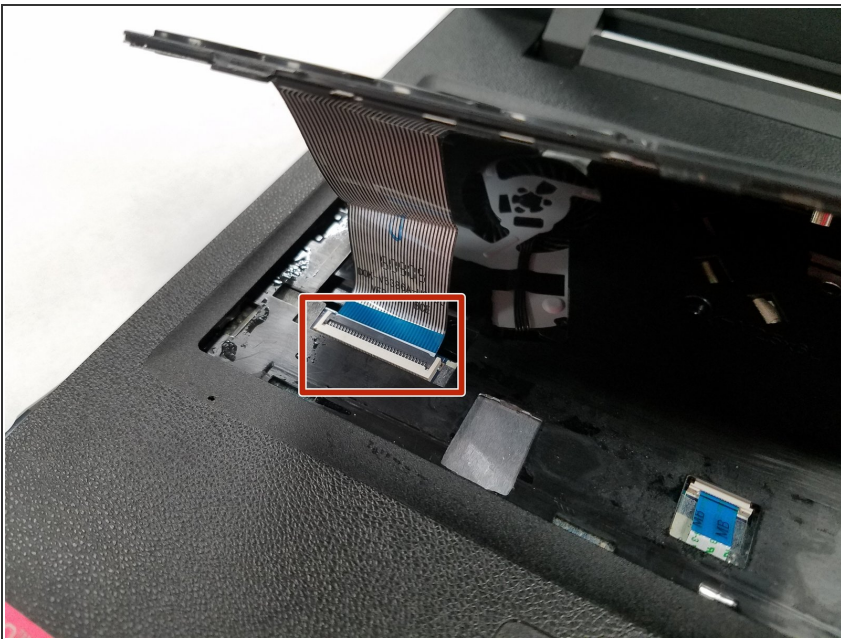
- [1 TB SSD / Upgrade Bundle](#) (1)
- [250 GB SSD / Upgrade Bundle](#) (1)
- [500 GB SSD / Upgrade Bundle](#) (1)
- [2 TB SSD / Upgrade Bundle](#) (1)

Step 1 — Keyboard



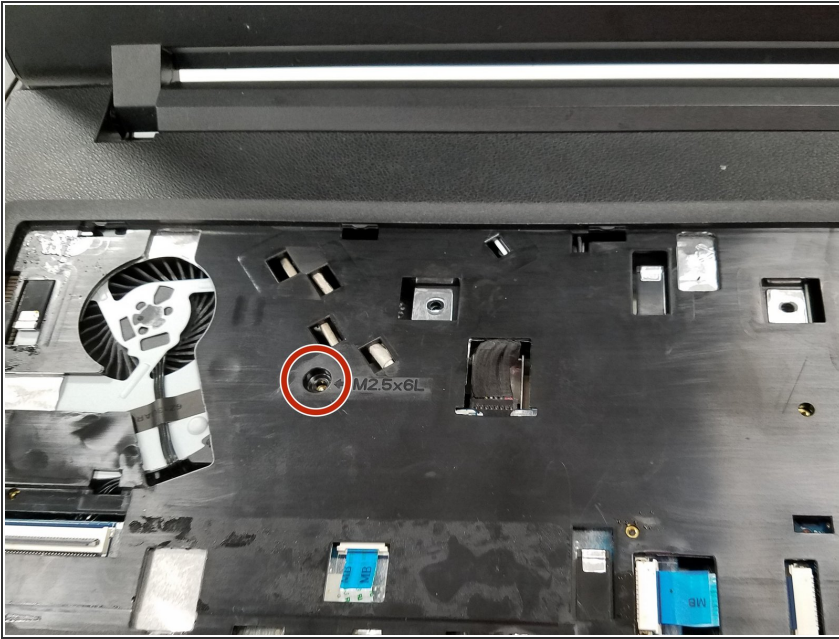
- Use the plastic opening tool to pry the keyboard up and away from the bottom assembly.

Step 2



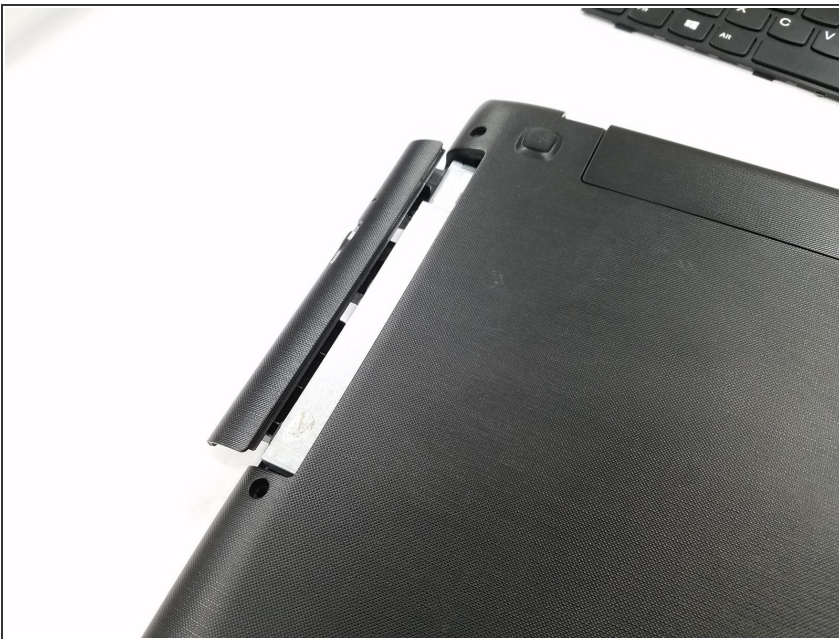
- Next disconnect the keyboard cable by using the tip of the spudger or your finger to lightly push out the ribbon from the contact port.
- Completely remove the keyboard from the bottom assembly.

Step 3 — Optical Drive



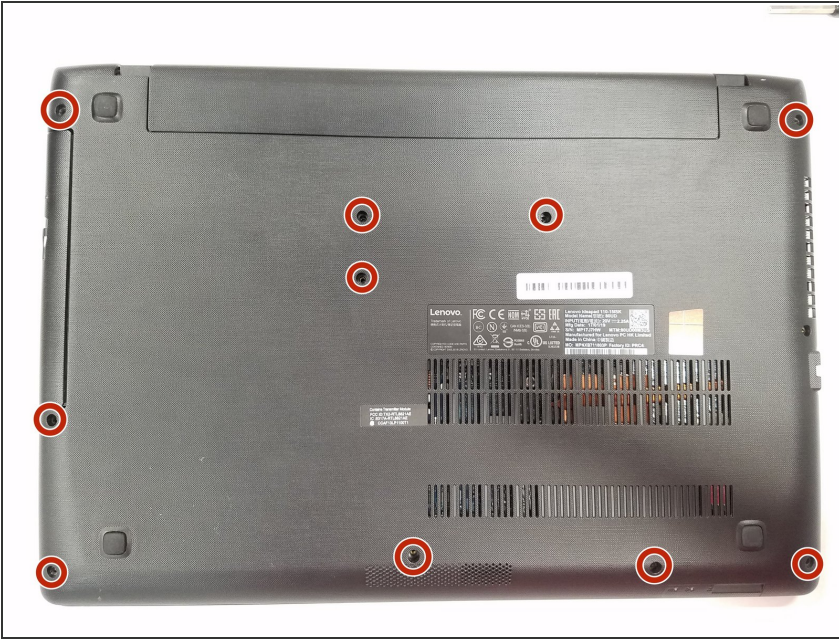
- Using a Phillips #1 screwdriver, unscrew the one 5.0mm screw on the back panel.

Step 4



- Flip the laptop to its back and the optical drive is located at the top left corner.
- Remove the optical CD DVD drive by lightly pulling it out of the assembly.

Step 5 — Upper Case



- Place the laptop bottom facing up.
- Using a Phillips #1 screwdriver, remove the ten 6.0mm screws on the back panel.
- Flip the computer back to top facing.

Step 6



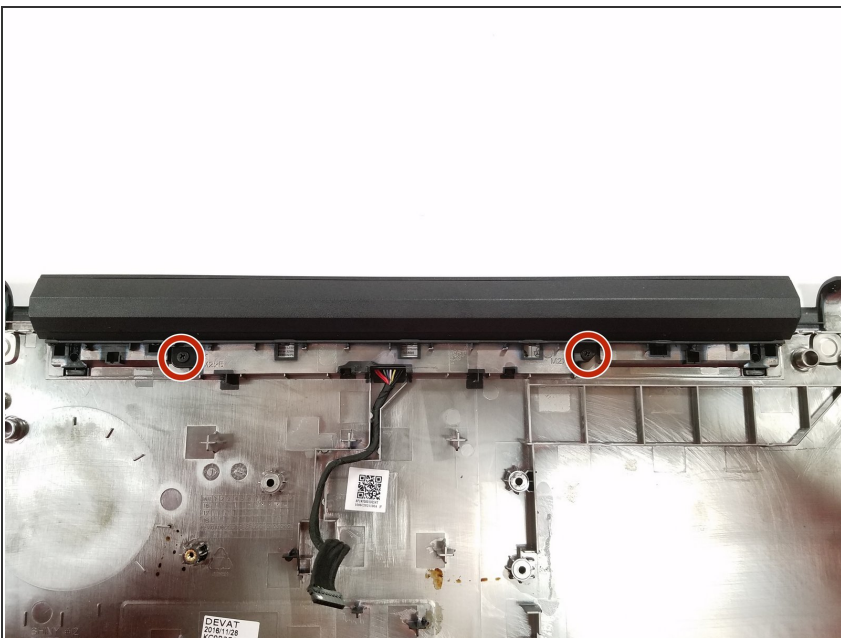
- Separate the top case from the bottom using a plastic opening tool.
- Continue prying the top and bottom case from each other all around the perimeter of the laptop.

Step 7 — Battery



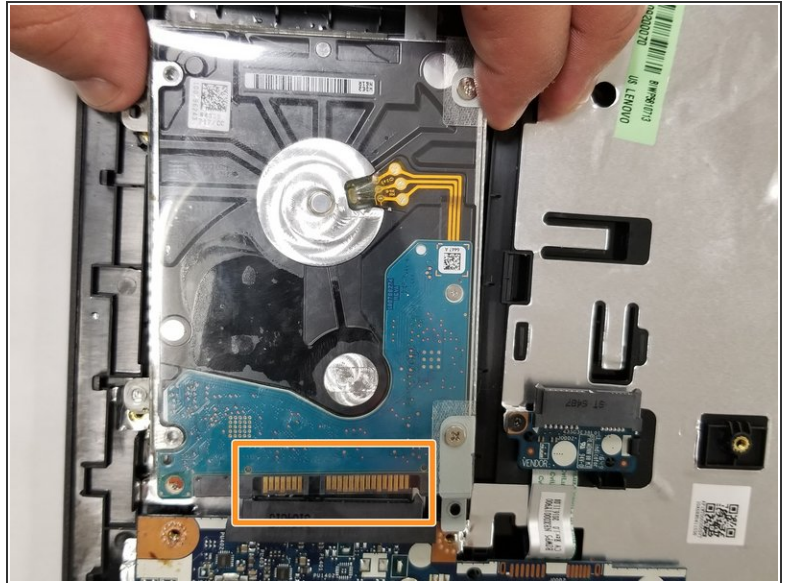
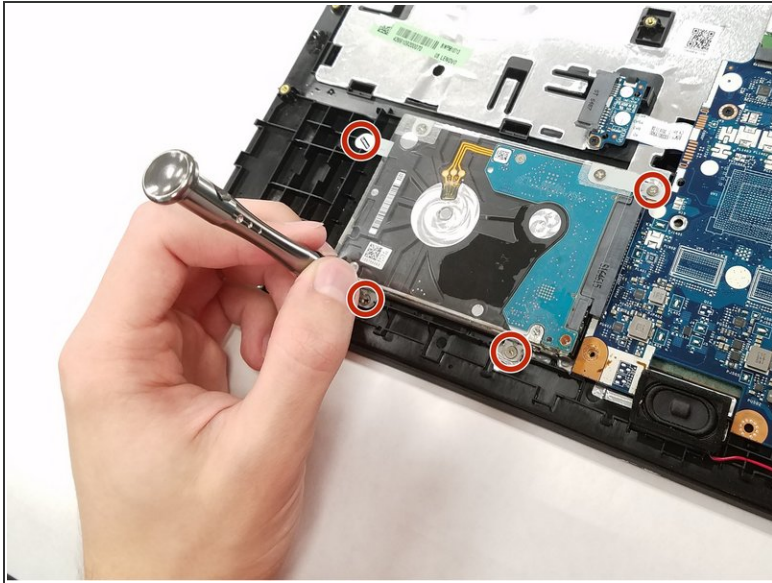
- Turn the laptop upside down and gently pry the top case free from the bottom case.

Step 8



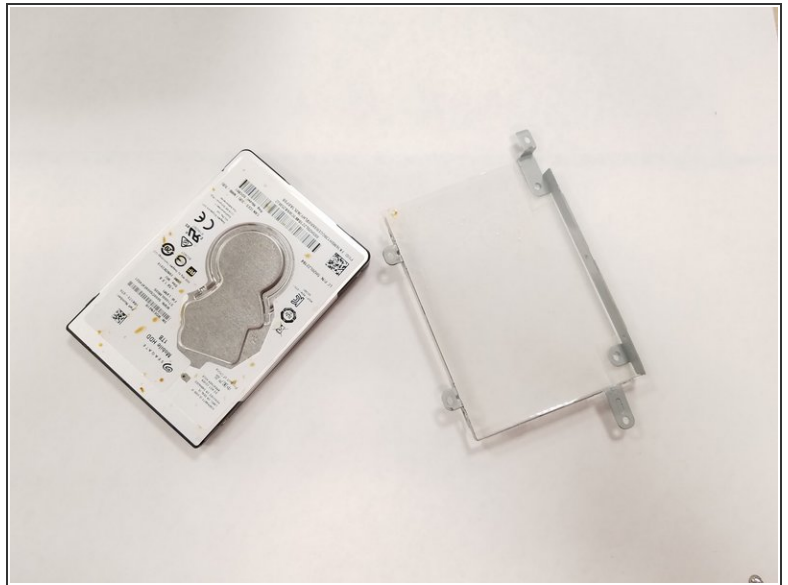
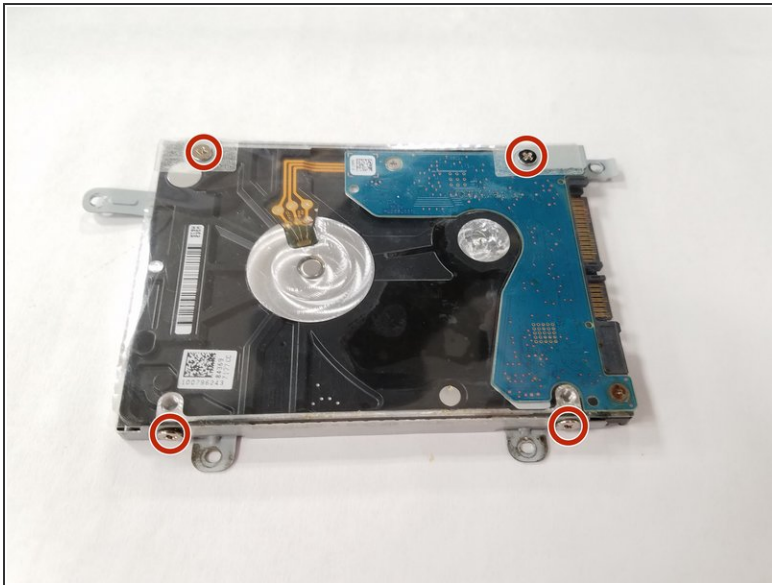
- The battery is attached to the bottom case of the laptop.
- Remove the two 4.0mm screws.
- Push the battery component away from you in order to completely remove the battery from the fixture.

Step 9 — Hard Drive



- Using a Phillips #1 screwdriver, remove the four 4.0mm corner screws securing the hard drive assembly to the body.
- Disconnect the hard drive from the back panel by sliding it to the left until loosened.
- Remove it completely by lifting the hard drive out of the back panel.

Step 10



- Using the Phillips #1 screwdriver, remove the four 3.0mm corner screws from the caddy of the hard drive.
- Separate the plastic caddy from the hard drive.

To reassemble your device, follow these instructions in reverse order.