



# Lenovo IdeaPad 300-17ISK Wireless LAN Card Replacement

Step by step guide to replace the wireless LAN card for a Lenovo IdeaPad 300-17ISK.

Written By: Ammar Dodin



---

## INTRODUCTION

The WLAN card enables your laptop to access wireless internet networks. This guide shows you how to replace a faulty WLAN card.

The battery for this device is not easily accessible and cannot be easily removed. Before you begin your replacement, be sure to disconnect the laptop from any power source. Additionally, we recommend that you drain the battery completely before you begin this replacement.



### TOOLS:

- [Phillips #1 Screwdriver](#) (1)
-



## Step 1 — Bottom Back Cover



- Unscrew the two 7mm Phillips #1 screws that hold the bottom back plate in its place.

## Step 2



- Place your hands at the bottom of the cover and slide it towards you.
- Lift the cover up to remove it.

## Step 3 — Wireless LAN Card



- The wireless LAN card is located at the center of the laptop.

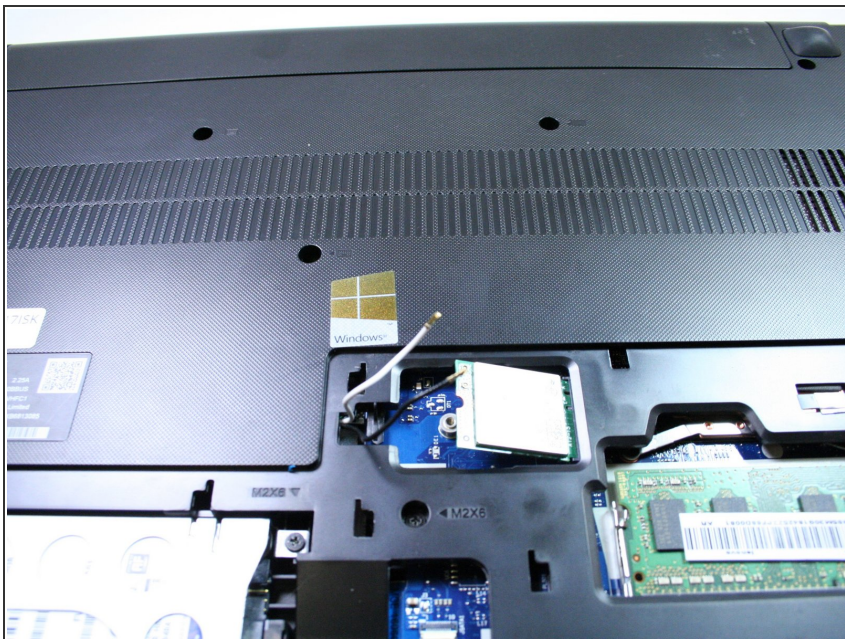
## Step 4



- Unscrew the 3mm Phillips #1 screw that holds the WLAN card in place.



## Step 5



- Disconnect the black and white cables from the WLAN card.

## Step 6



- Gently remove the WLAN card out of its slot.

To reassemble your device, follow these instructions in reverse order.