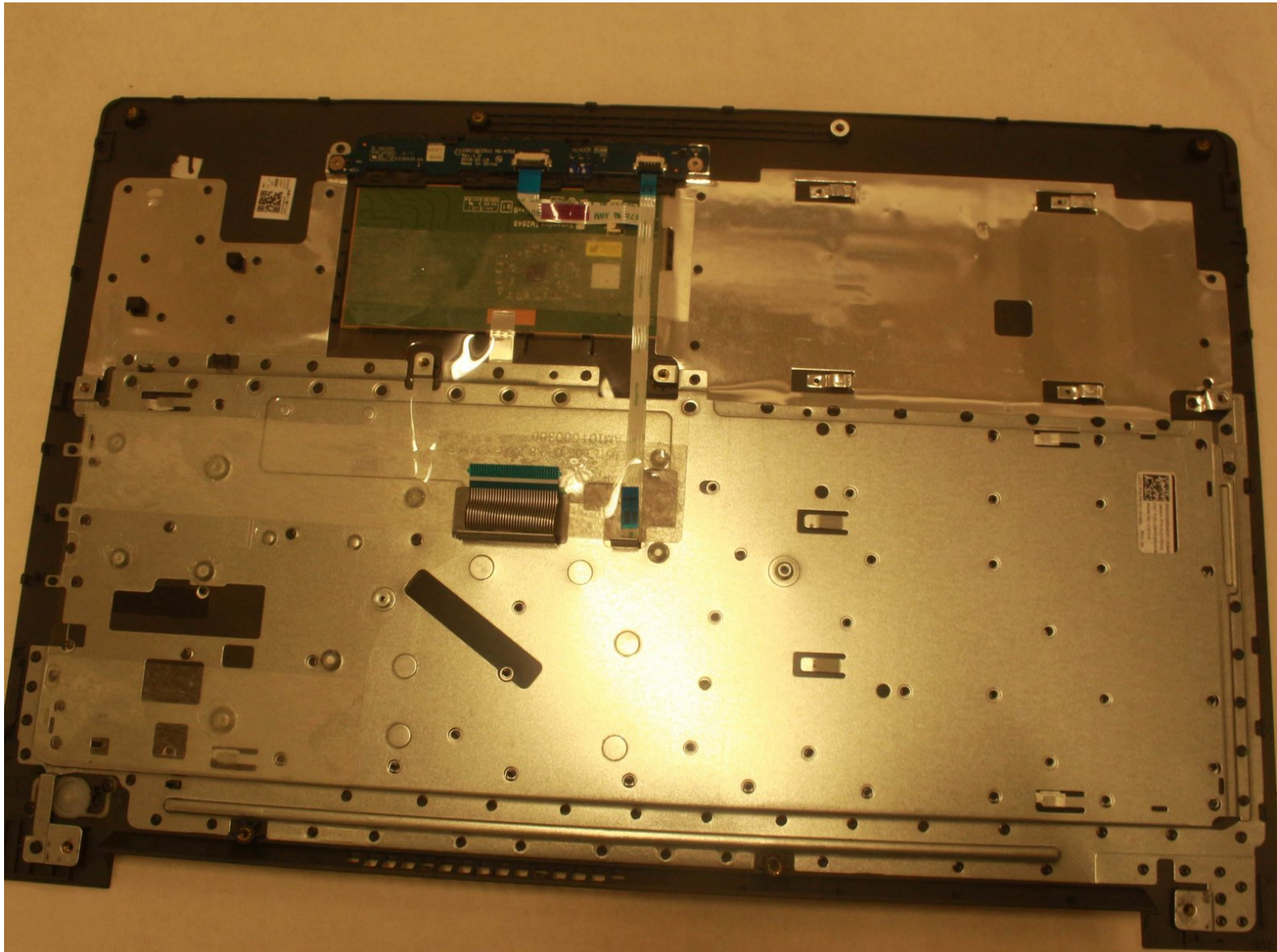




Lenovo IdeaPad 310 Touch-15ISK Trackpad Replacement

Learn how to replace the trackpad.

Written By: Richard



INTRODUCTION

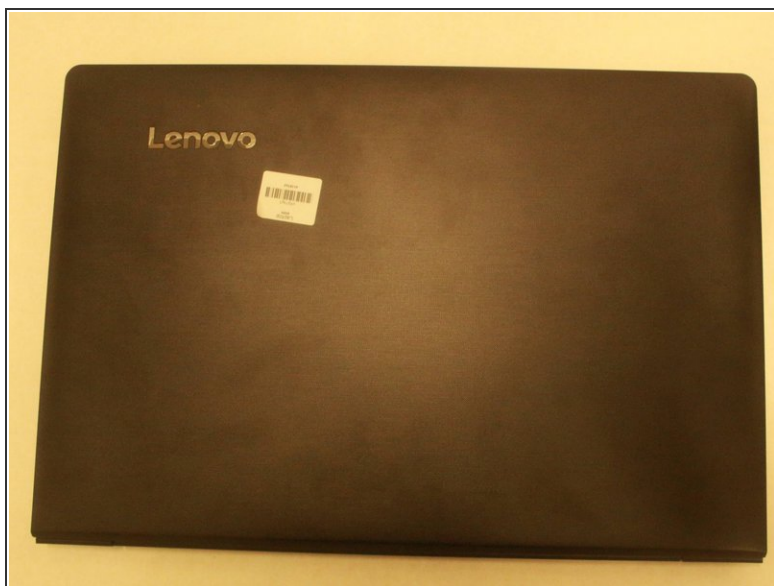
This guide is necessary for times when the trackpad is unresponsive and thought to be broken or damaged. Replacing the trackpad requires that you replace the entire keyboard and trackpad as a whole piece.





TOOLS:

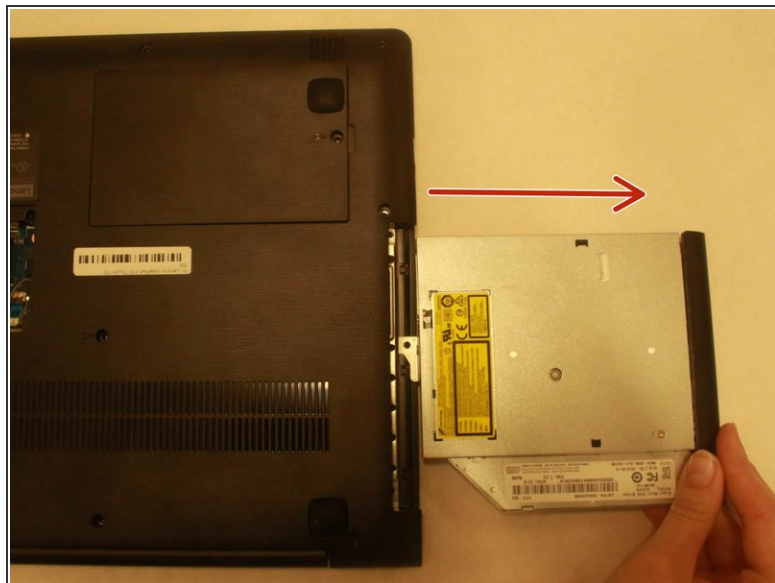
- [Phillips #0 Screwdriver](#) (1)
 - [Spudger](#) (1)
 - [Metal Spudger](#) (1)
-

Step 1 — Trackpad



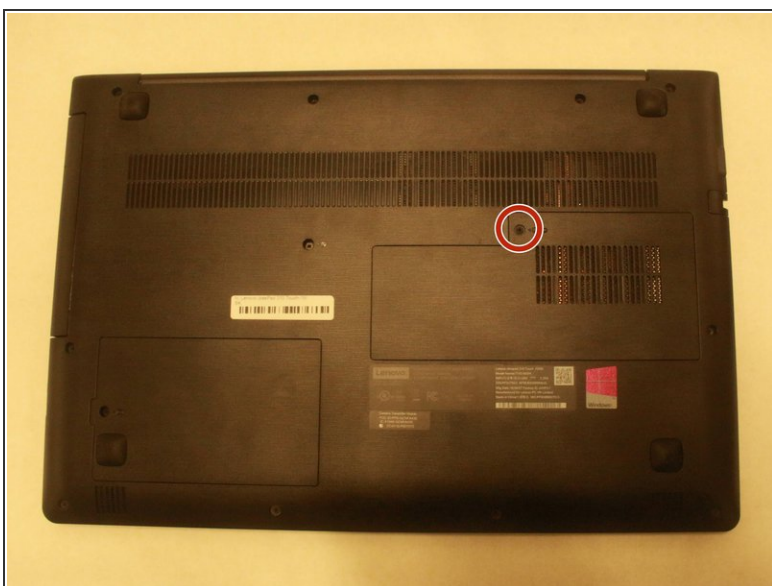
-  It is recommended that you replace the entire keyboard and trackpad panel as a whole piece.
-  Unplug the power cable from the wall before performing replacement to avoid electrocution.
- Flip the laptop over.

Step 2



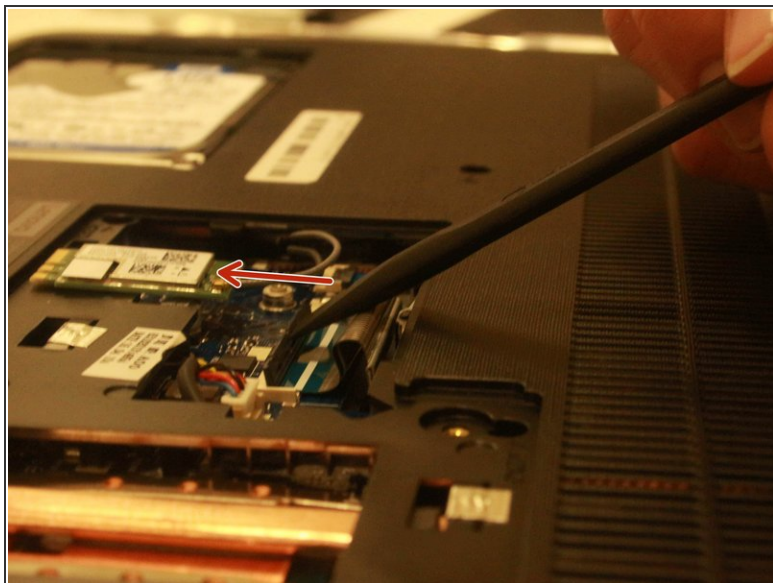
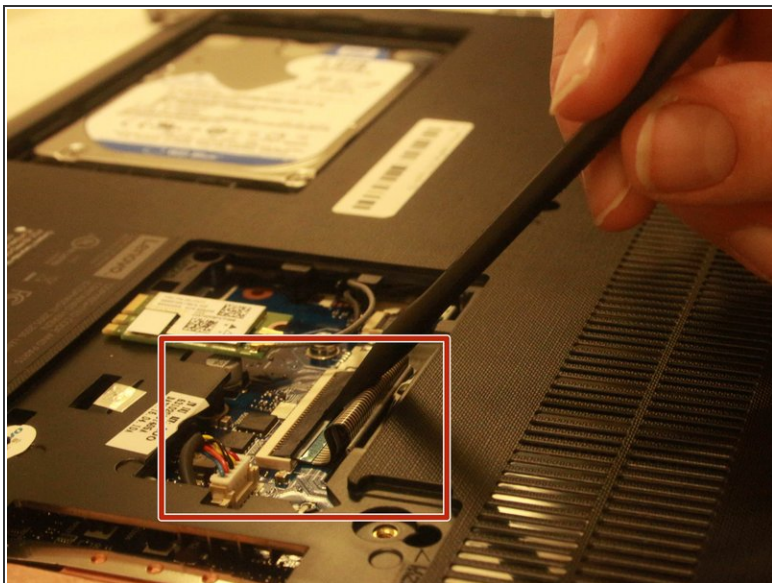
- Remove the single Phillips #0 screw that is holding the CD drive in place.
- Pull out the CD drive.

Step 3



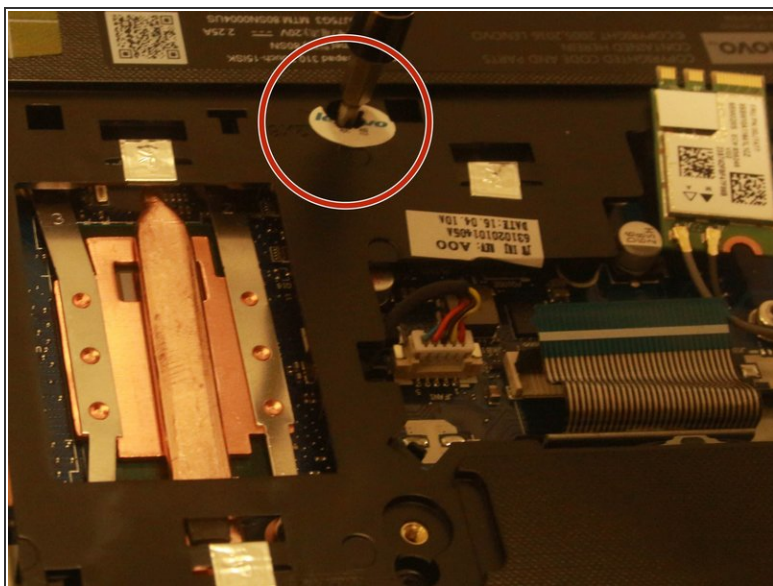
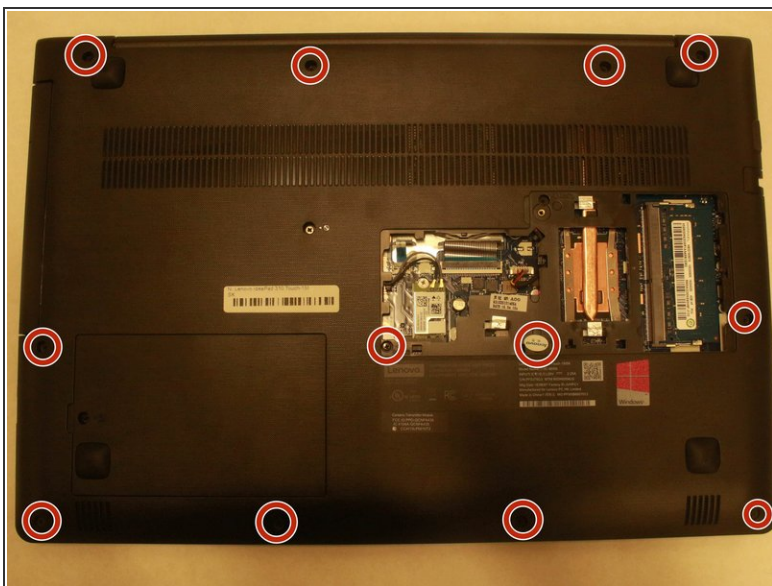
- Remove the single Phillips #0 screw that is holding down the battery and ram panel.
- Remove the battery and ram panel.

Step 4



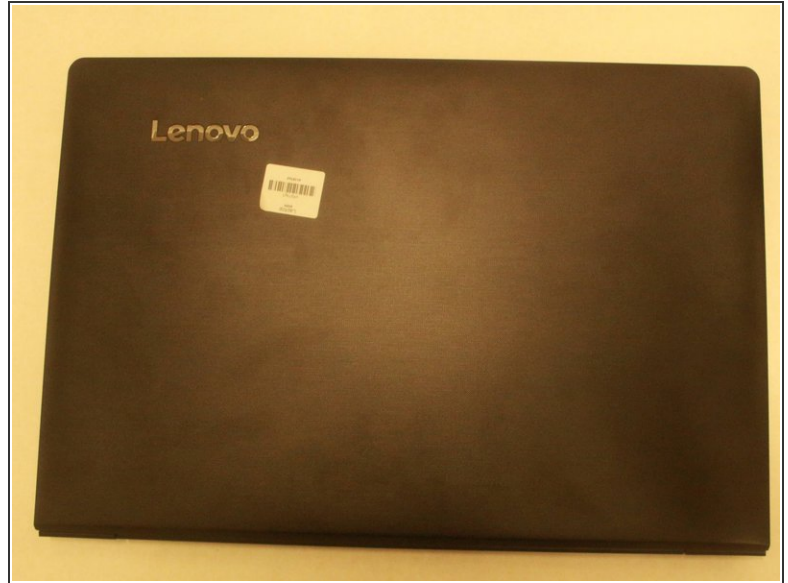
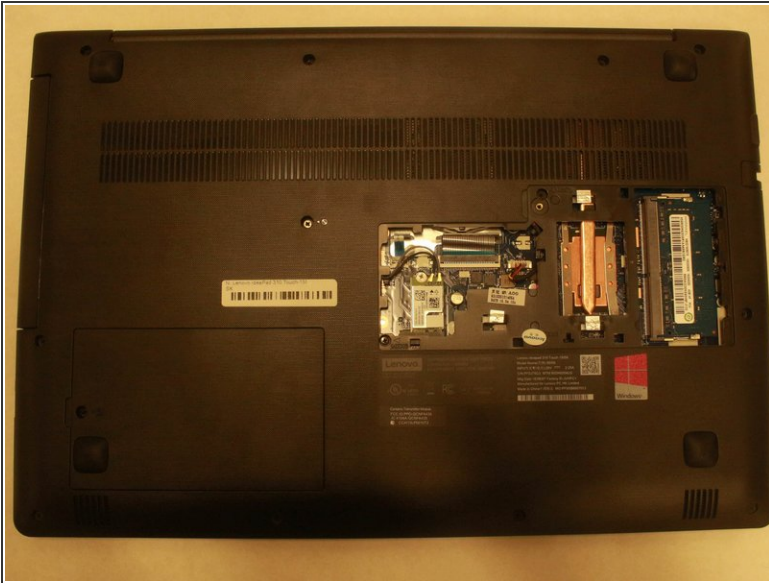
- To unplug the keyboard ribbon cable, flip up the black tab.
- Pull the ribbon cable straight out.

Step 5



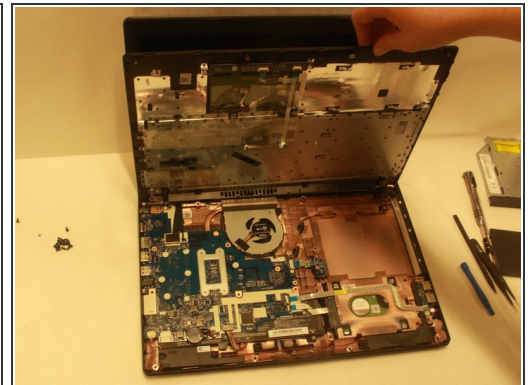
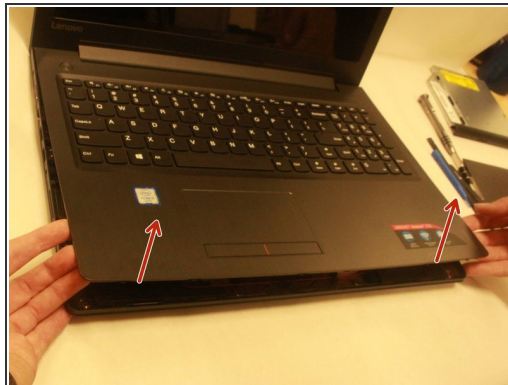
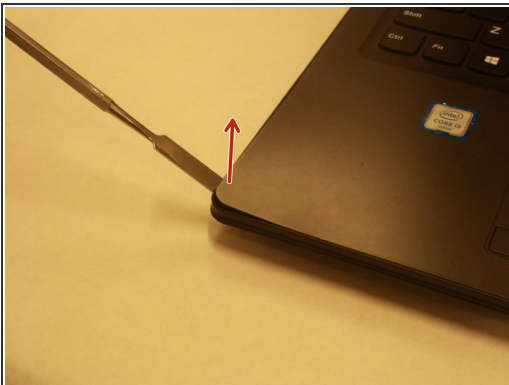
- Remove the 12 Phillips #0 screws that are holding the keyboard panel in place.
- ❗ One of the screws is hiding under a sticker.

Step 6



- Flip the laptop back over.

Step 7



- Using a plastic spudger, pry between the keyboard panel and back panel layer along the entirety of the seam.
 - Remove the keyboard panel.
- ⚠ If the panel feels like it is breaking, there is probably still a screw attached.

To reassemble your device, follow these instructions in reverse order.