



Lenovo IdeaPad 330 Screen Replacement Guide

Remove and Replace Lenovo IdeaPad 330 LCD Screen.

Written By: Patrick



INTRODUCTION

Guide to safely remove and replace Lenovo IdeaPad 330 LCD Screen without breaking clips. Most laptop screens can be replaced by removing a few screws in the bezel, then removing the bezel, then the screen. This series of Lenovo laptops require you to remove the bottom panel and detach the screen from the base to properly remove the bezel to then remove the screen.



TOOLS:

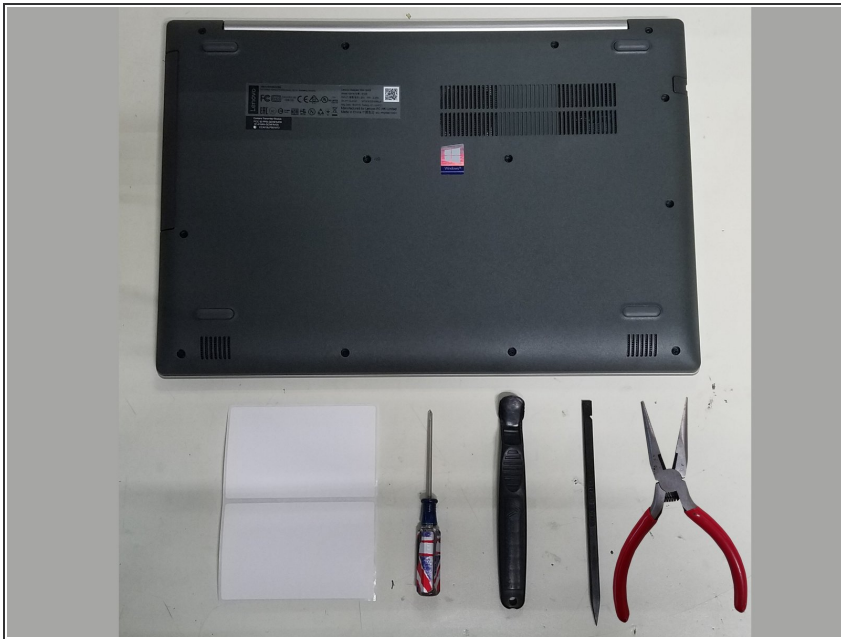
- [Phillips #0 Screwdriver](#) (1)
- [Spudger](#) (1)
- [Small Chain Nose Pliers](#) (1)
- [container](#) (1)



PARTS:

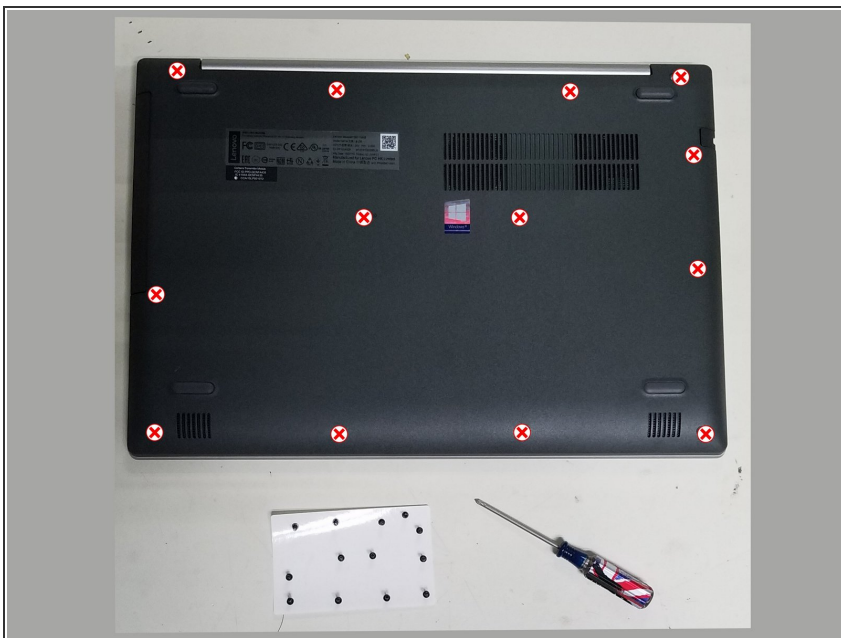
- [Replacement Laptop Screen](#) (1)

Step 1 — Tools Needed



- 1- Container or Sticky Paper for Screws.
- 2- Small Phillips Head Screwdriver
- 3- Nylon Spudger/Pry Tool
 - "Nylon is used because it is non-conductive and doesn't easily scratch things as it's a softer material."
- 4- Needle Nose Pliers

Step 2 — Remove Screws from Case Bottom



- Remove All **13** Screws from the case bottom.
- Remember to keep your screws together in a safe place like a on sticky paper or in a cup.

Step 3 — Remove DVD Drive



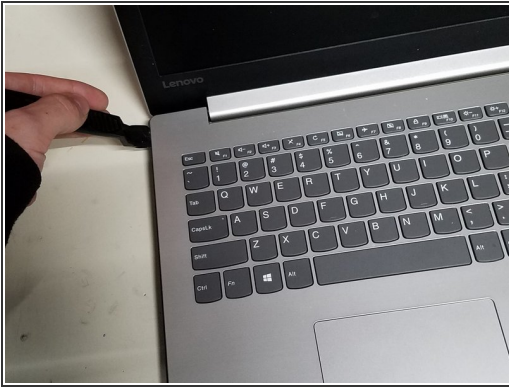
- Carefully slide out the **DVD Drive**
 - It helps to pull on the dvd drives face plate with even pressure.

Step 4 — Remove Bottom Panel -Pt1



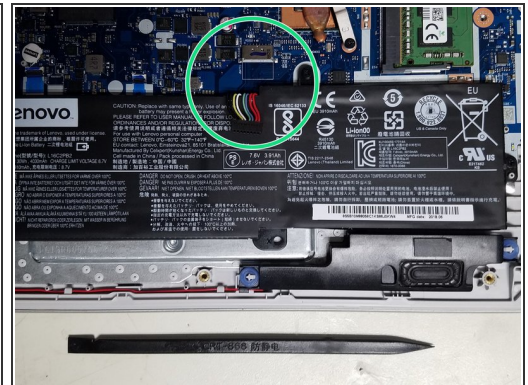
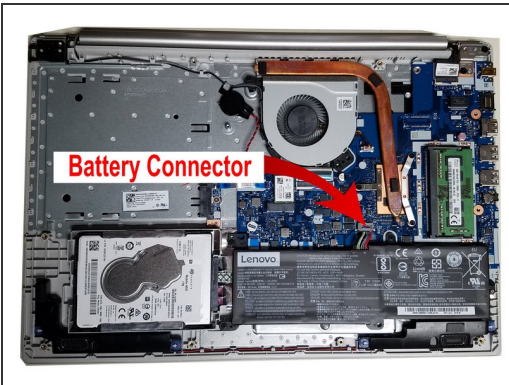
- 1- Start with flipping over the Laptop and opening the lid.
- 2- Grab a Spudger/Pry Tool
- 3- Starting on the front right corner, use the tool to separate the top and bottom.
- 4- Work your way around the Laptop separating the top from the bottom.
- **See Next Step To Finish Removing Bottom Panel**

Step 5 — Remove Bottom Panel - Pt2



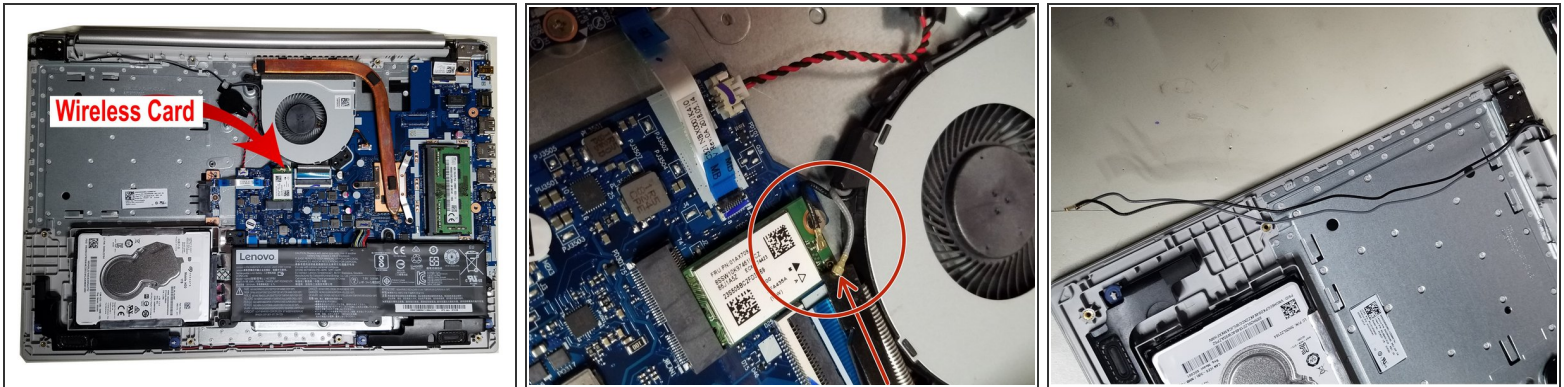
- 1- Once you have separated the panels, carefully close the laptop and flip it over.
- 2- Gently remove the bottom panel by starting with the opposite side of the hinges.
- Next we'll need to disconnect some things.

Step 6 — Disconnect Battery



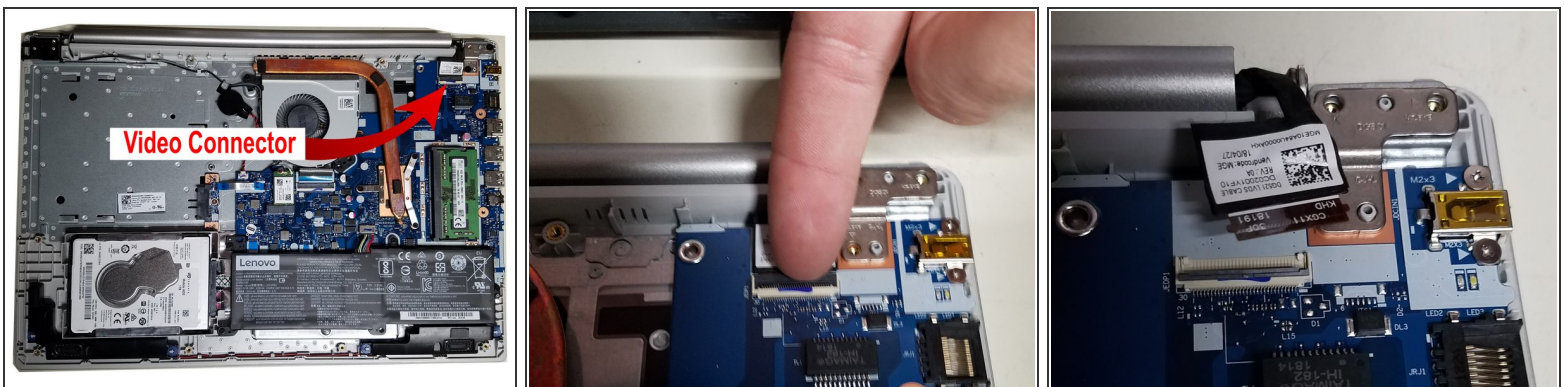
- 1- Grab a Spudger/Pry Tool
- 2- Use the tool to carefully push the battery connector out.

Step 7 — Remove Antennas from Palm Rest



- 1- Grab a Spudger/ Pry Tool or Two.
- 2- Gently Remove All Antennas from the Wireless Card.
 - **Attention!** Make sure to pull the connectors straight up and off. Pulling them off at an angle can damage the connectors.
 - **Tip!** Use 2 Spudgers or 1 Spudger and a finger nail to grab two sides. Then pull gently wiggle up and off.
- 3- Gently remove the antenna cables from their grooves.
 - **Tip!** Start at the hinge side to make getting the cables attached to the cpu fan undone easier with the extra slack.

Step 8 — Disconnect Video Cable



- 1- Use a finger nail or nylon spudger to flip up the latch holding in the video cable.
- 2- Gently pull out the video cable without bending the ribbon cable.

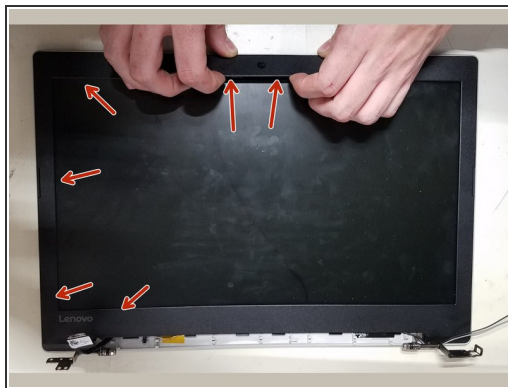
This document was generated on 2019-09-17 01:12:30 PM (MST).

Step 9 — Remove Screen from Palm Rest



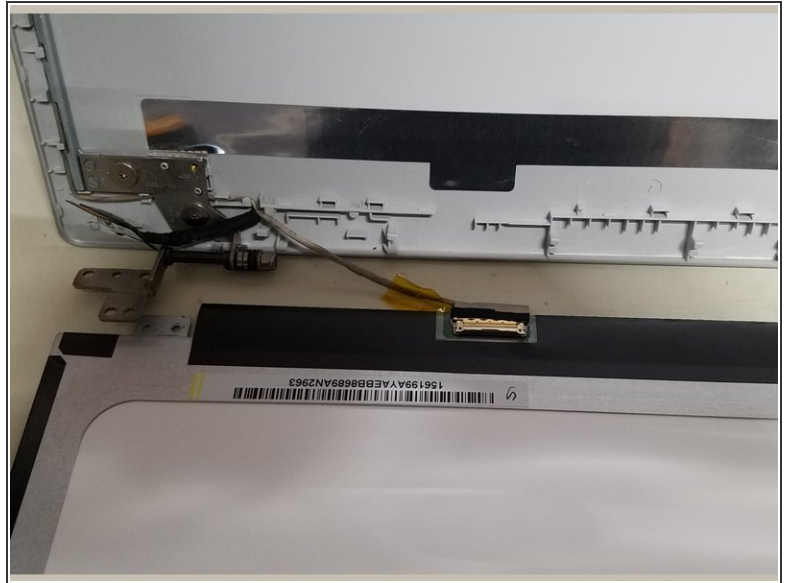
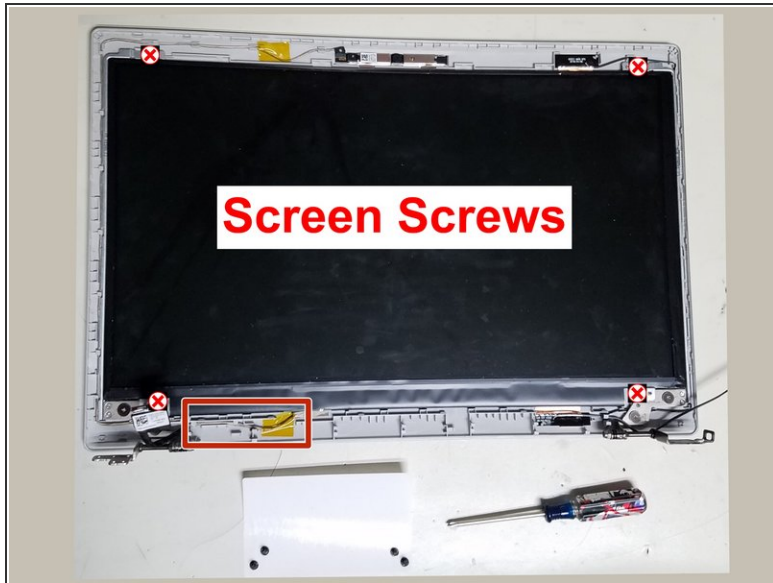
- 1- Grab your Phillips Head Screwdriver and Remove the 4 hinge screws.
- 2- Gently use your Spudger/Pry tool to help start separating the hinges from the palm rest, Then Carefully use the Pliers to grab the hinges and open it the rest of the way.
- 3- Do Step 2 for both hinges.
- 4- Now the screen should easily pull away from the palm rest.

Step 10 — Remove Bezel from Screen Assembly



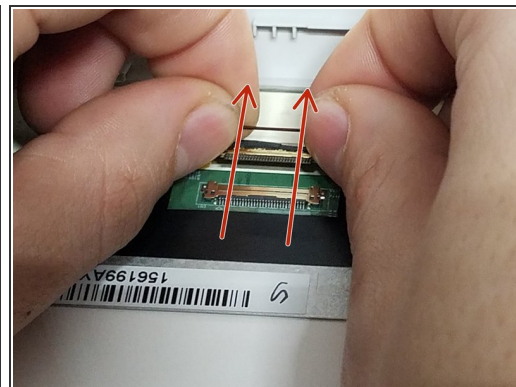
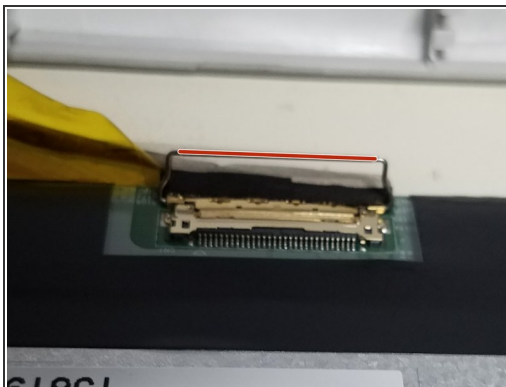
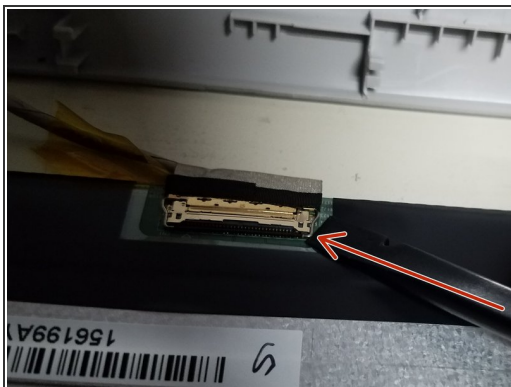
- 1- Lay down the screen.
 - **Attention!** *Be sure not to slide around and scratch the top panel*
- 2- Remove the "tube piece" running between the two hinges by sliding it to the right.
- 3- Using your hands and starting by the camera, gently start pulling up the bezel from the inside.
- 4- Work your way around until its completely removed.

Step 11 — Remove Screen - Pt1



- 1- Grab your Phillips Head Screwdriver and remove the 4 screws holding in the screen.
- 2- Carefully release the screen cable shown in the red rectangle from their grooves.
- 3- Carefully lay the screen on its face and lift off the top panel.
- 4- Next we'll disconnect the video cable from the screen.

Step 12 — Removing Screen - Pt2



- 1- Lift up the clip on the video connector on the back of the screen using a Spudger.
- 2- Grab the clip using both hands and gently and evenly shimmy out the video connector.
- **YOUR'E DONE! :)** Now time put the new one in by going in reverse.

Step 13 — Finished



● X

To reassemble your device, follow these instructions in reverse order.