



Lenovo IdeaPad 330S Teardown

Written By: IT FIX

INTRODUCTION

CPU: Intel Core i7-8550U 1.80 GHz

RAM: Samsung DDR4-8+4GB-2666

Hard Drive: Toshiba NVMe 128GB WD Blue 1TB HDD

Graphics: NVIDIA GeForce GTX1050



TOOLS:

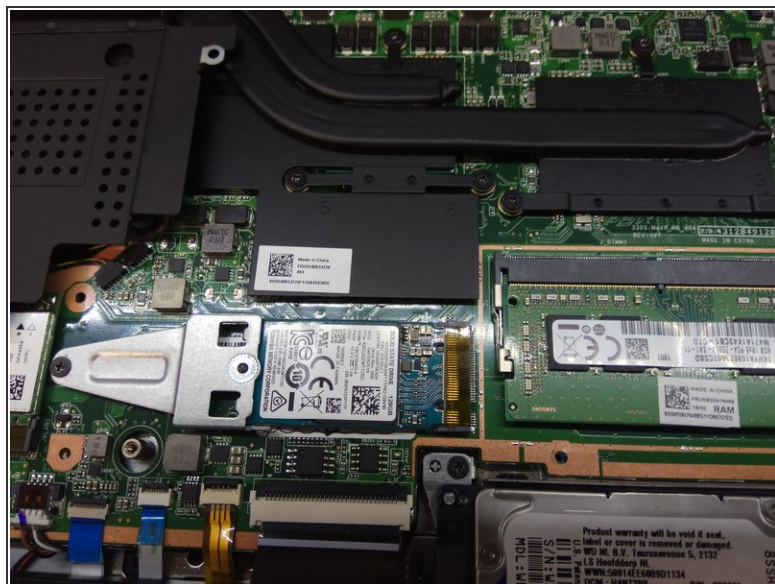
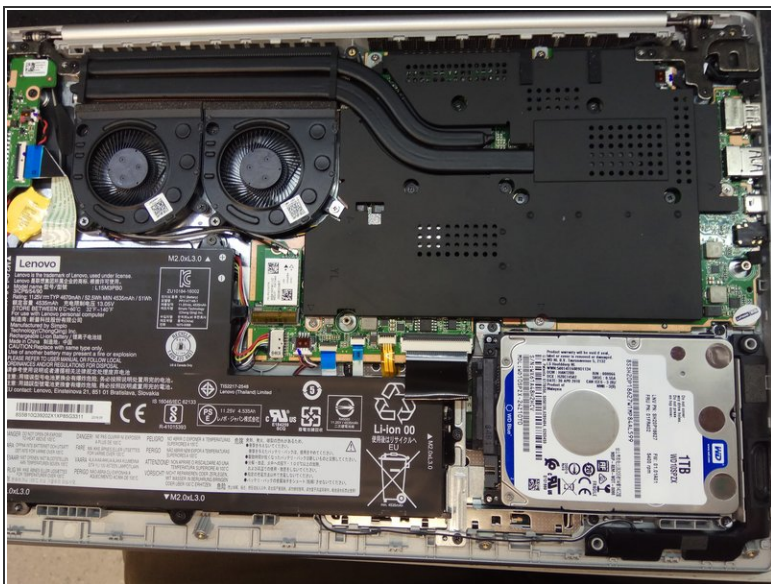
- [Pro Tech Toolkit](#) (1)

Step 1 — Lenovo IdeaPad 330S Teardown



- Insert wisdom here.

Step 2



- Insert wisdom here.