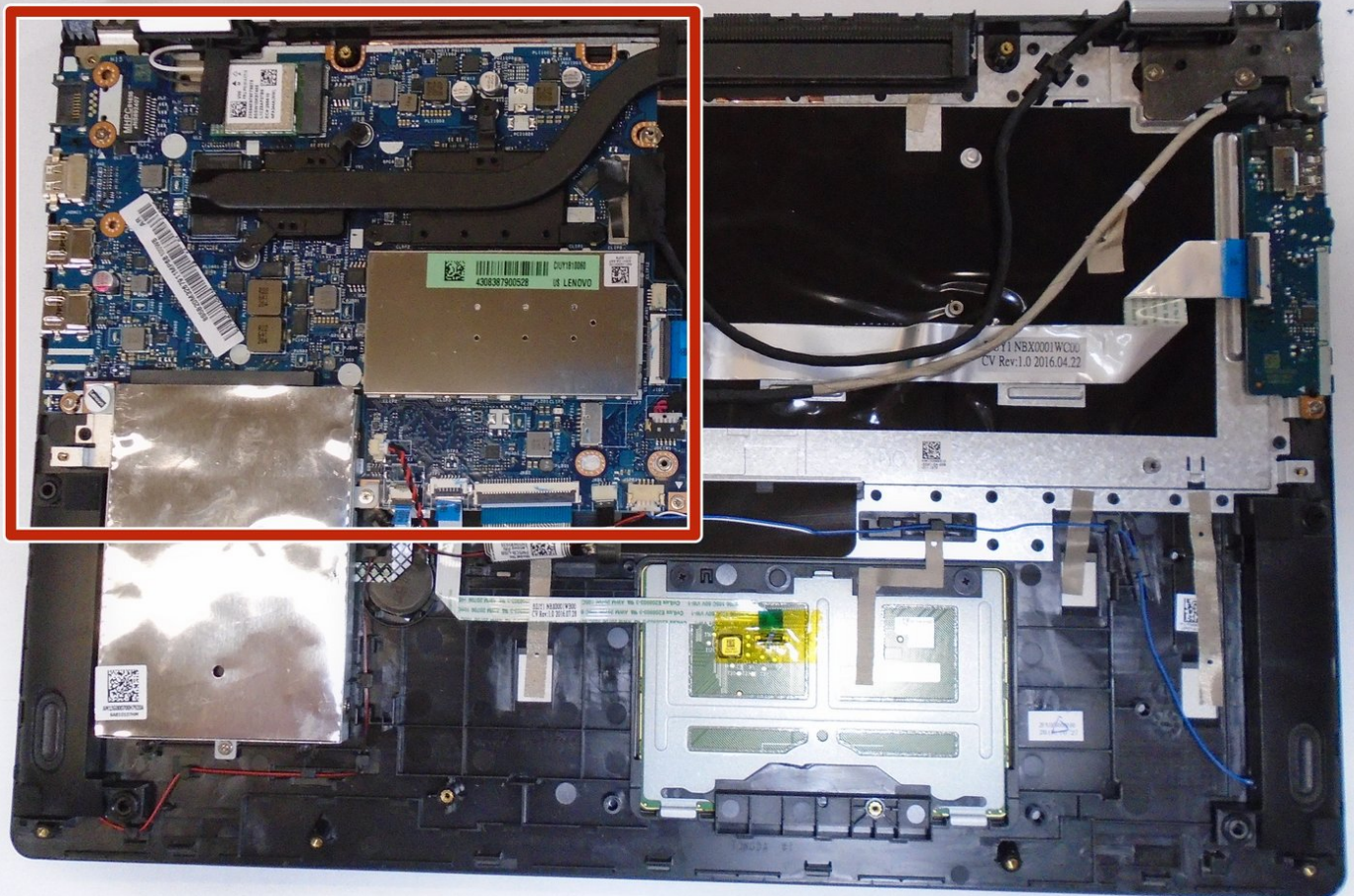




Lenovo IdeaPad FLEX 4-1580 Circuit Board Replacement

How to replace a Lenovo IdeaPad FLEX 4-1580 motherboard.

Written By: Matthew Hurtt



INTRODUCTION

If your computer becomes unresponsive during use, then it is probably due to your circuit board.

TOOLS:

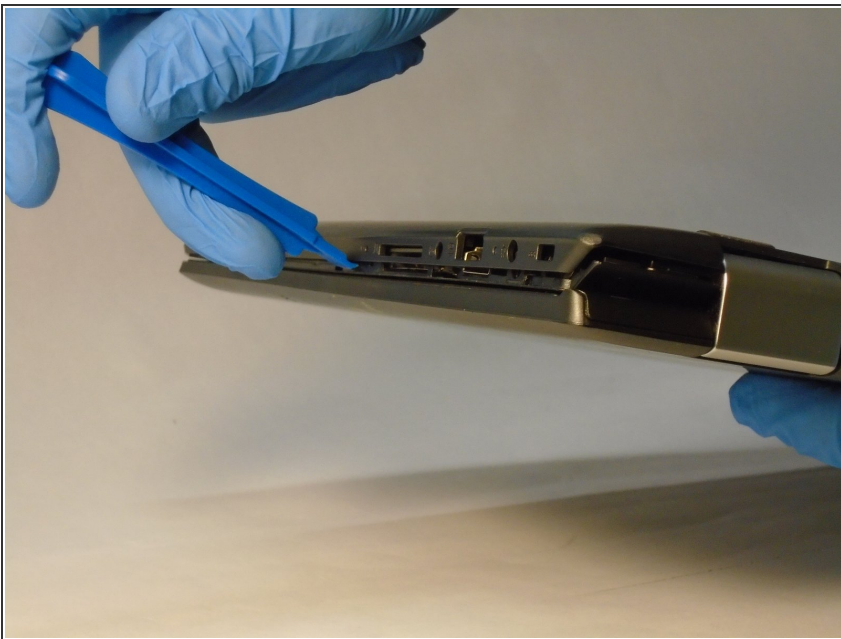
- [Spudger](#) (1)
 - [iFixit Opening Tools](#) (1)
-

Step 1 — Battery



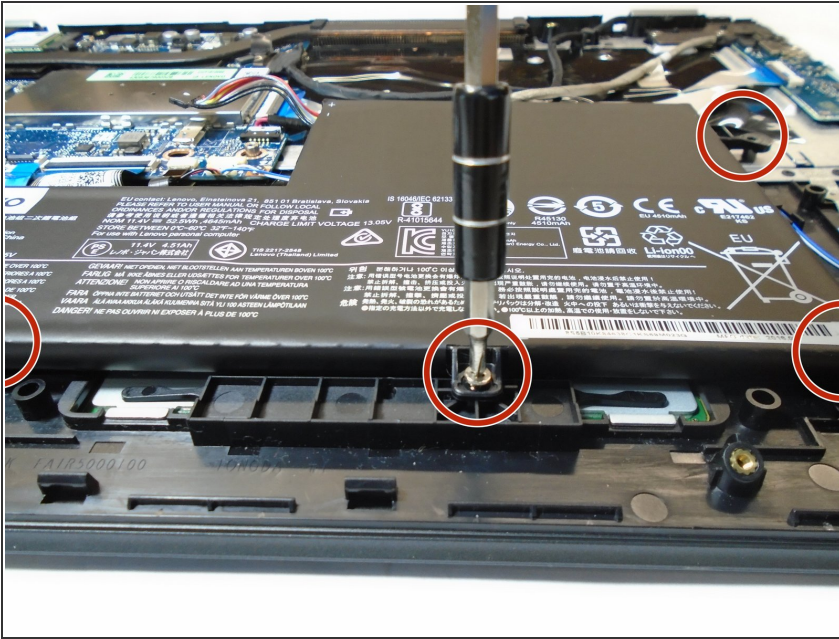
- Flip laptop over so the model sticker is showing, and begin to unscrew all of the screws.

Step 2



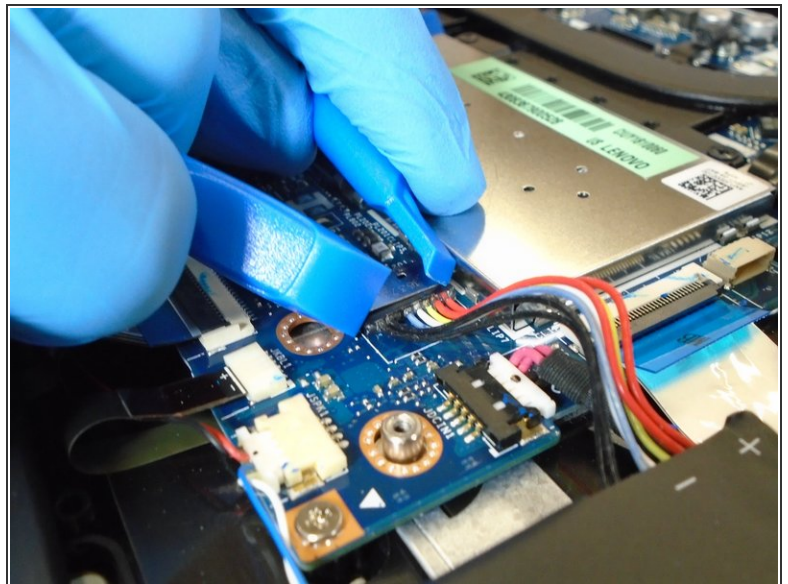
- Pop off the back panel using a plastic opening tool once all screws are removed.

Step 3



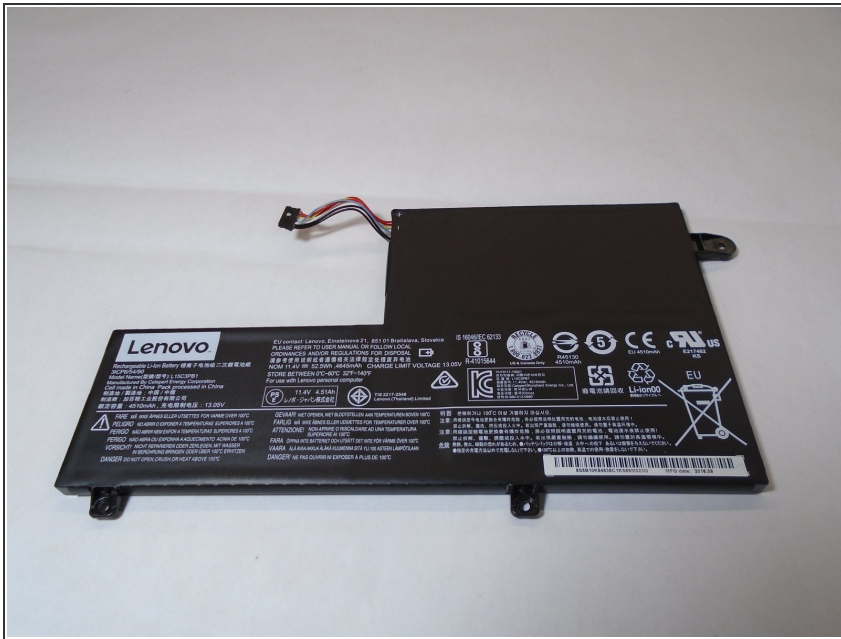
- Once the panel is fully removed, begin to unscrew the battery.

Step 4



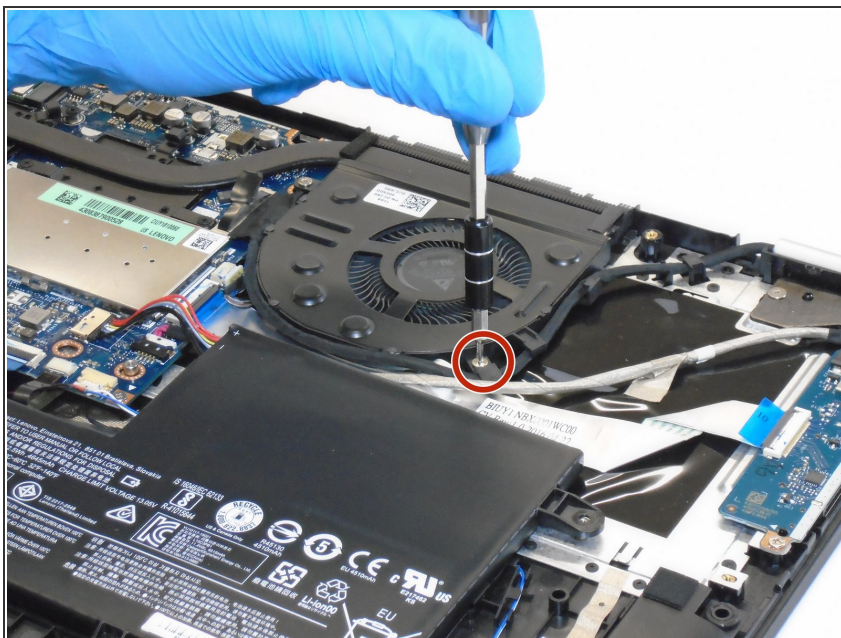
- Use the iFixit Opening tool to disconnect the battery from the circuit board.
- When all screws are removed from the battery, carefully lift the battery up.

Step 5



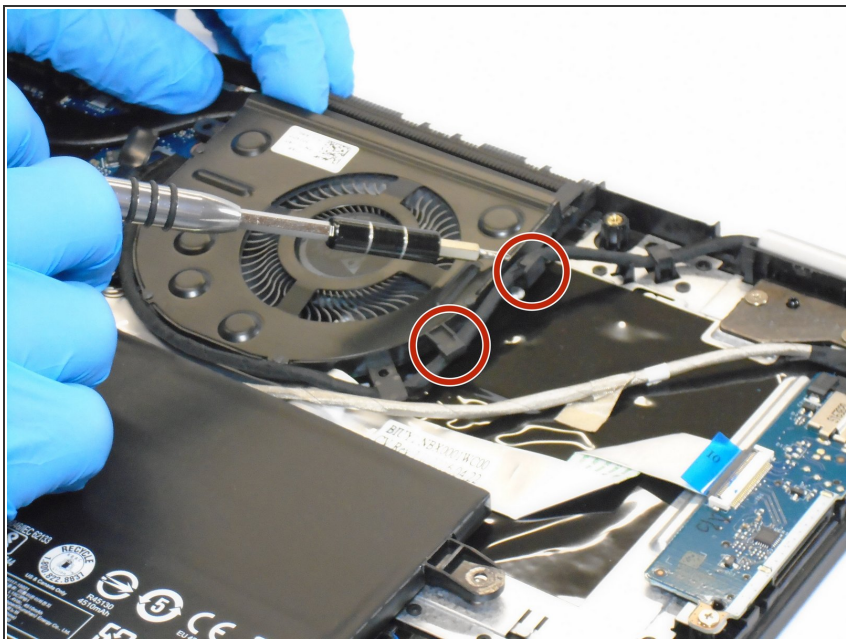
- The battery is completely removed, and can be replaced with a new battery.

Step 6 — Fan



- Remove all screws securing the fan to the laptop.

Step 7



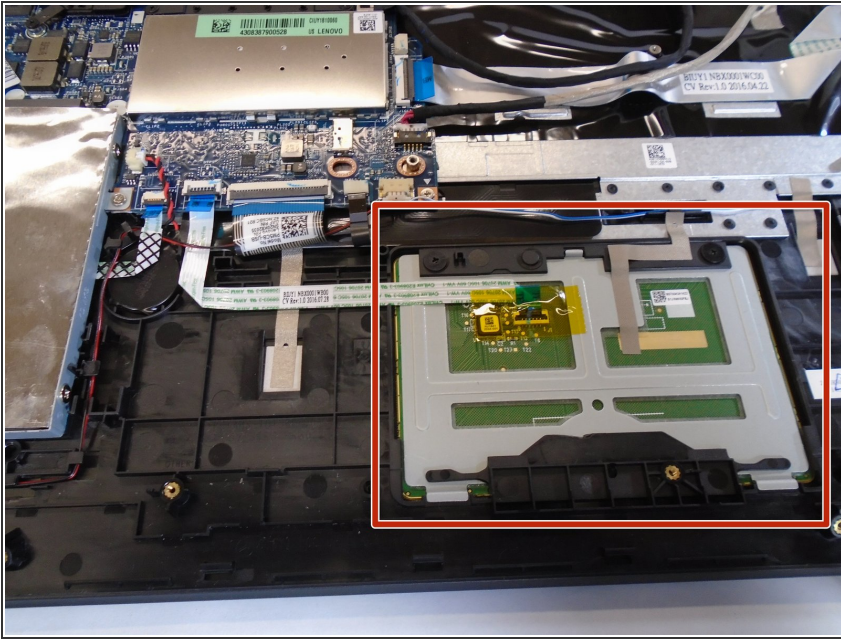
- Unhook the wire from the fan component using a spudger.

Step 8



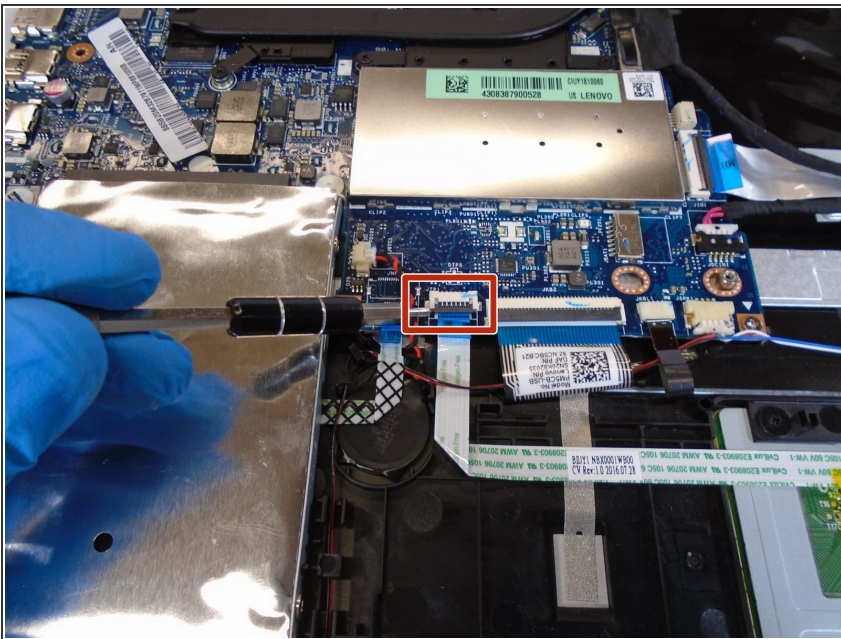
- Now the fan is completely removed.

Step 9 — Touchpad



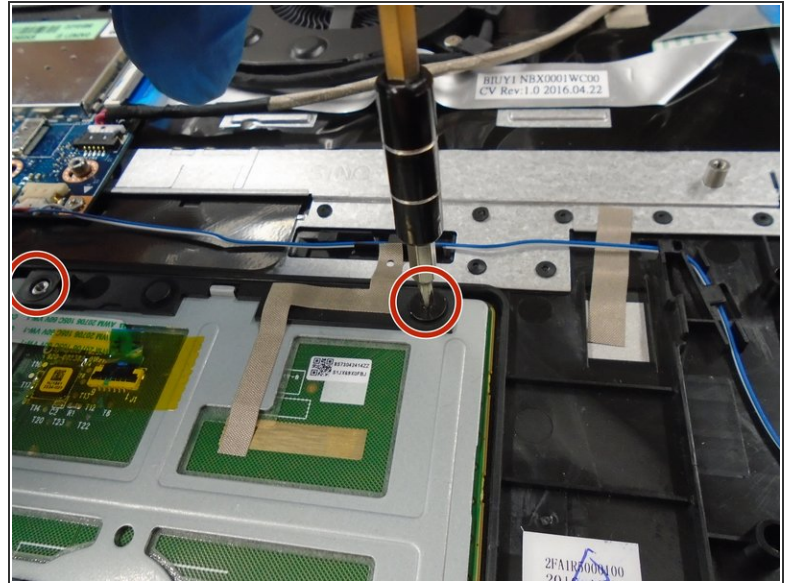
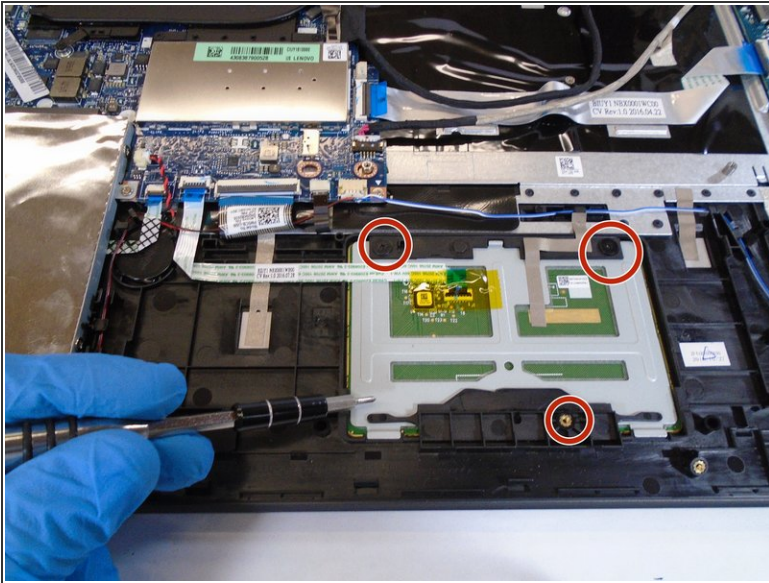
- After battery is removed, you will move to the touchpad.

Step 10



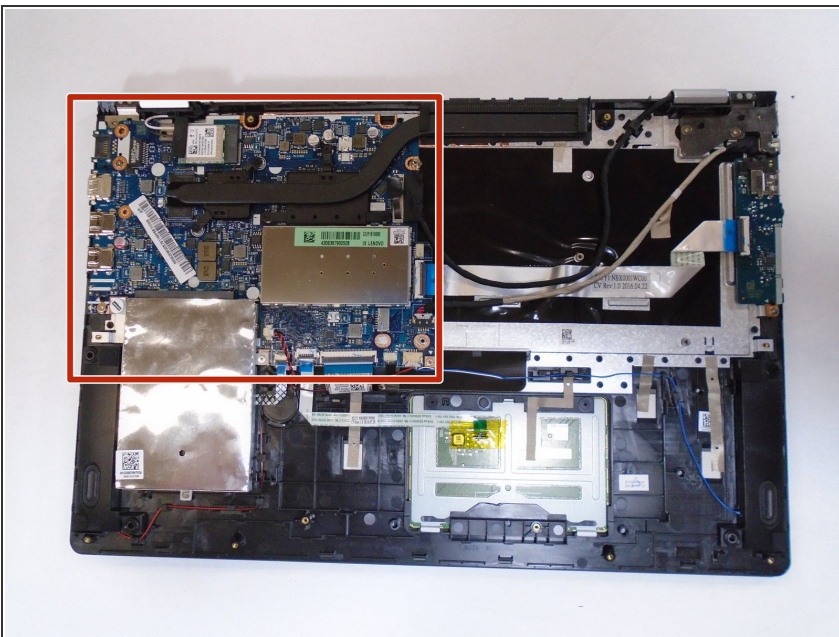
- Before removing touchpad you will have to disconnect it from the circuit board using a nylon spudger.

Step 11



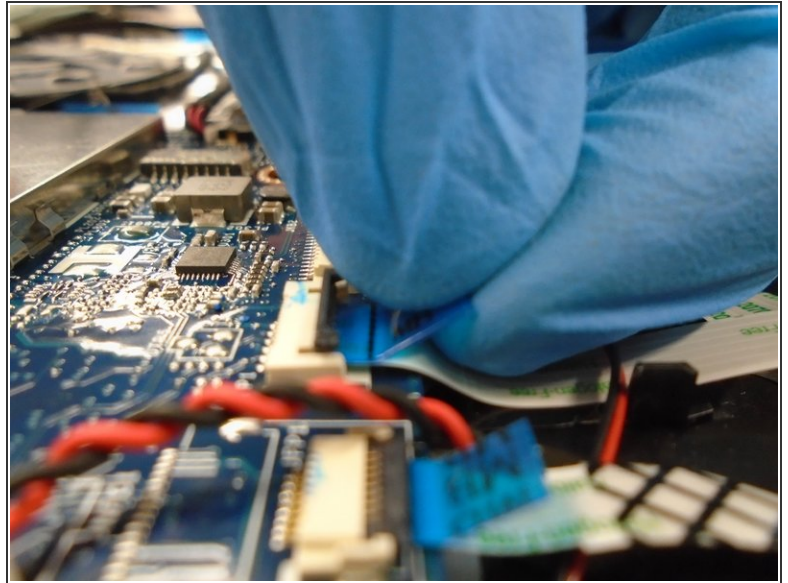
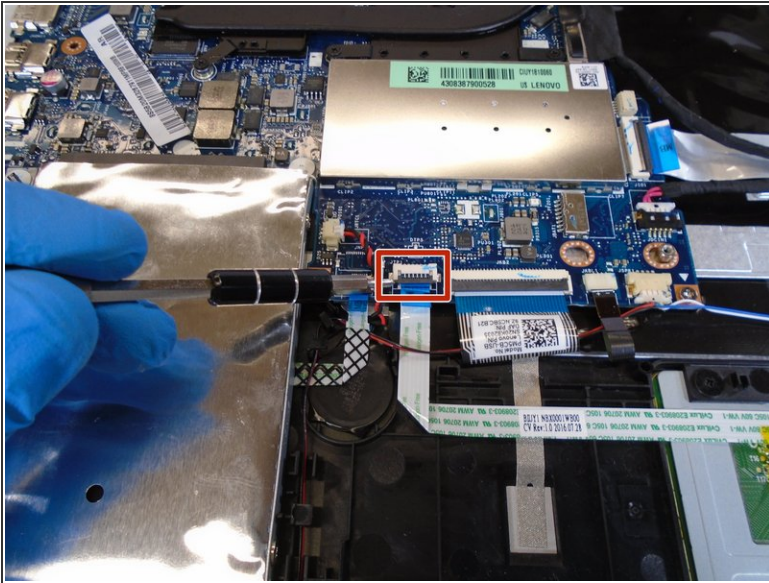
- Remove all the screws holding the touchpad down.

Step 12 — Circuit Board



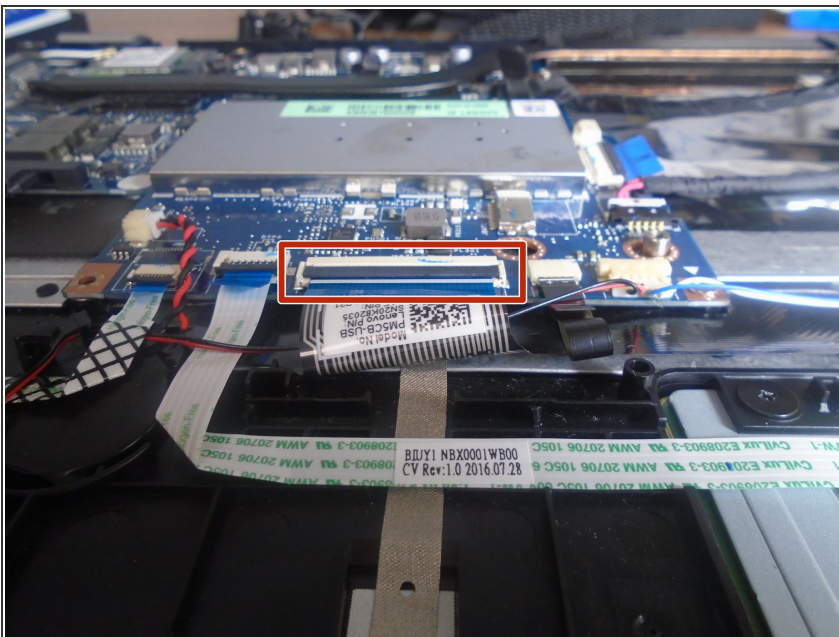
- Once fan and battery are removed, you are finally able to fully access the circuit board.

Step 13



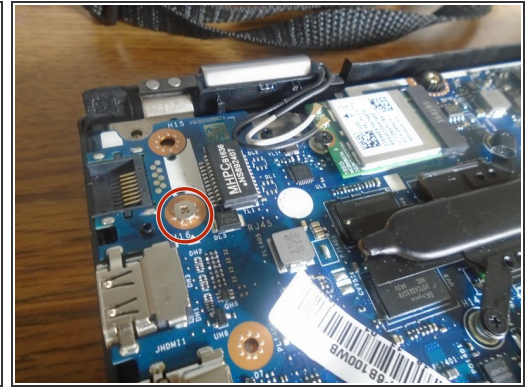
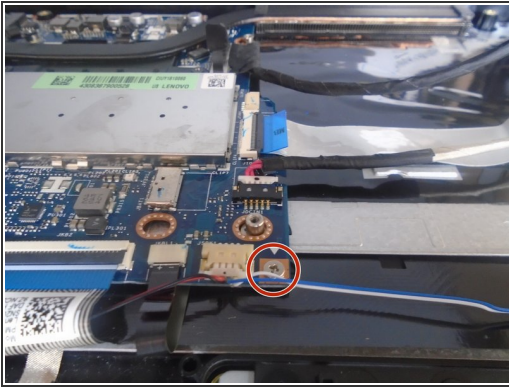
- Disconnect the touchpad cord from the circuit board using a nylon spudger.

Step 14



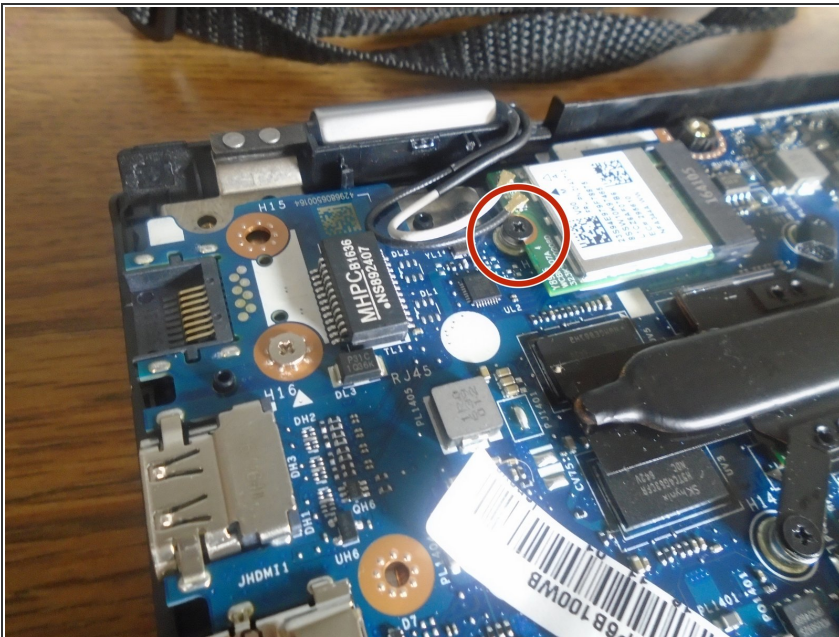
- Then you will lift up the flap that holds these wires down.

Step 15



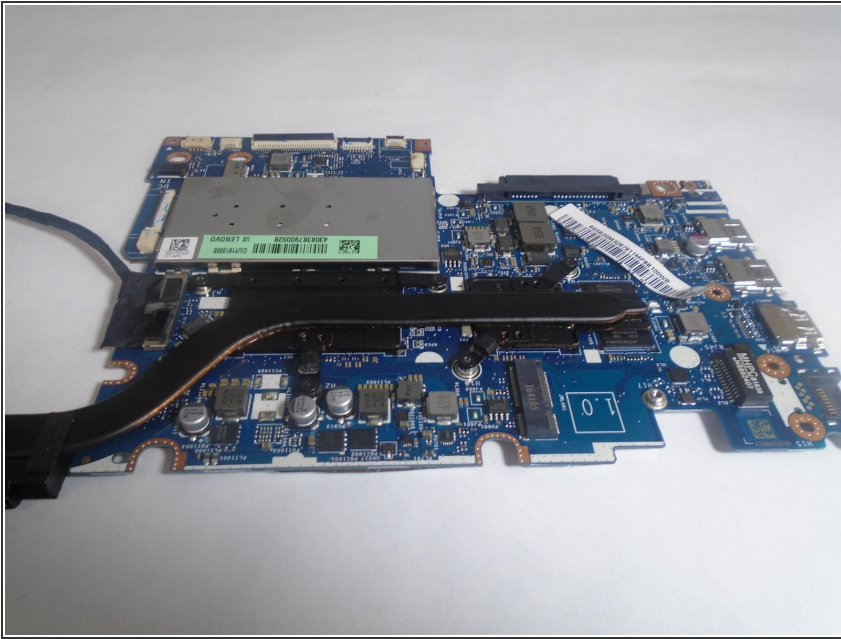
- After the flap is opened then you will have to go and remove all the screws holding the circuit board to the computer.

Step 16



- After the screws are removed from the circuit board, you will have to remove these last screws to remove it completely.

Step 17



- The circuit board is completely removed.

To reassemble your device, follow these instructions in reverse order.