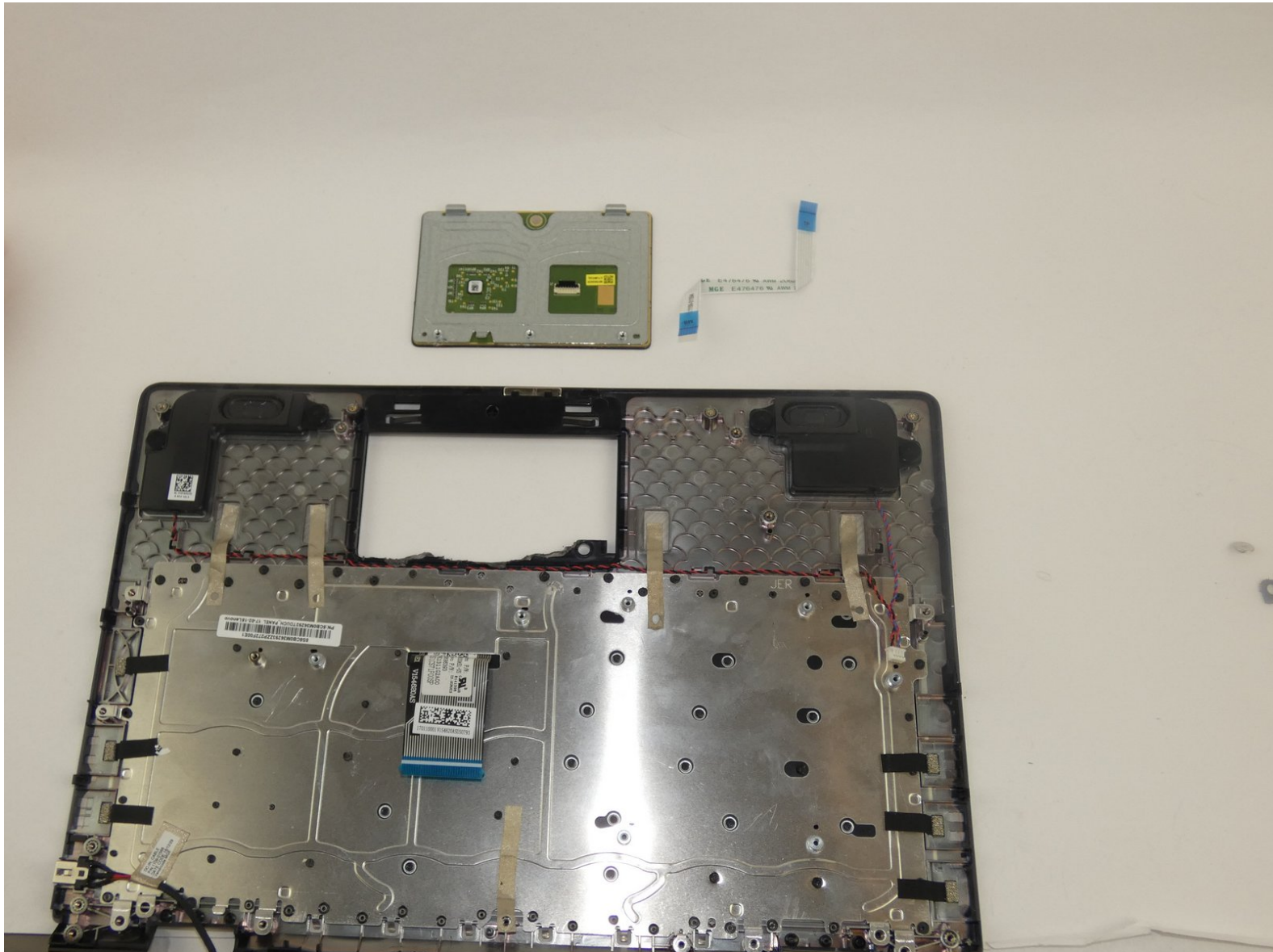




Lenovo IdeaPad Flex 4-1130 Touchpad Replacement

Remove and replace the touchpad on the Lenovo Ideapad Flex4-1130.

Written By: Adrian Miranda



INTRODUCTION

If you are experiencing a delay between touching the touchpad and actual movement of the mouse on screen or a complete lack of mouse movement, a touchpad replacement might be needed.

TOOLS:

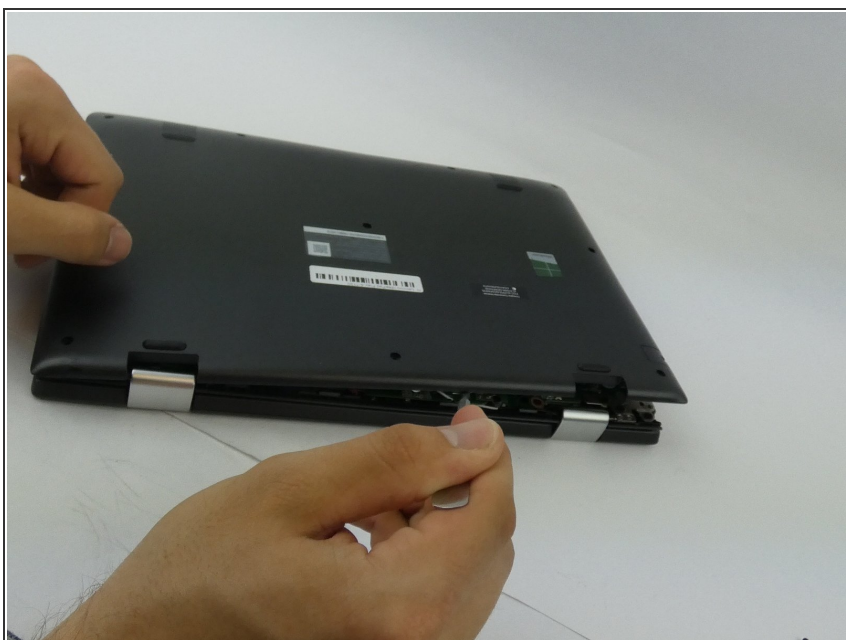
- [Phillips #0 Screwdriver](#) (1)
 - [Spudger](#) (1)
-

Step 1 — Battery



- ❗ Power off your Lenovo Ideapad Flex4-1130 before beginning disassembly.
- Remove the ten 4mm screws from the back panel.

Step 2



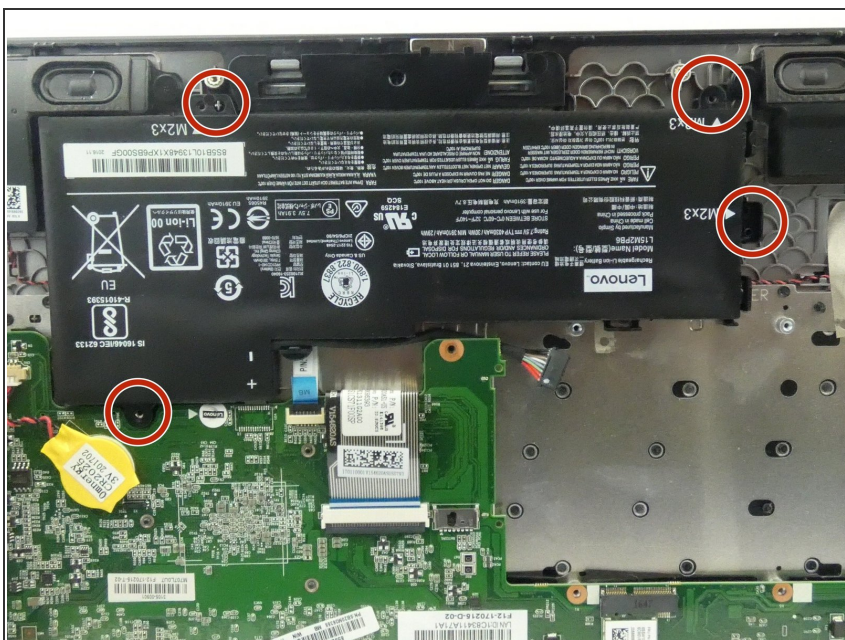
- Insert the spudger into the groove work your way around the laptop to separate the bottom from the case.
- ⚠ Do not insert the spudger too deep! This could potentially damage a device part.

Step 3



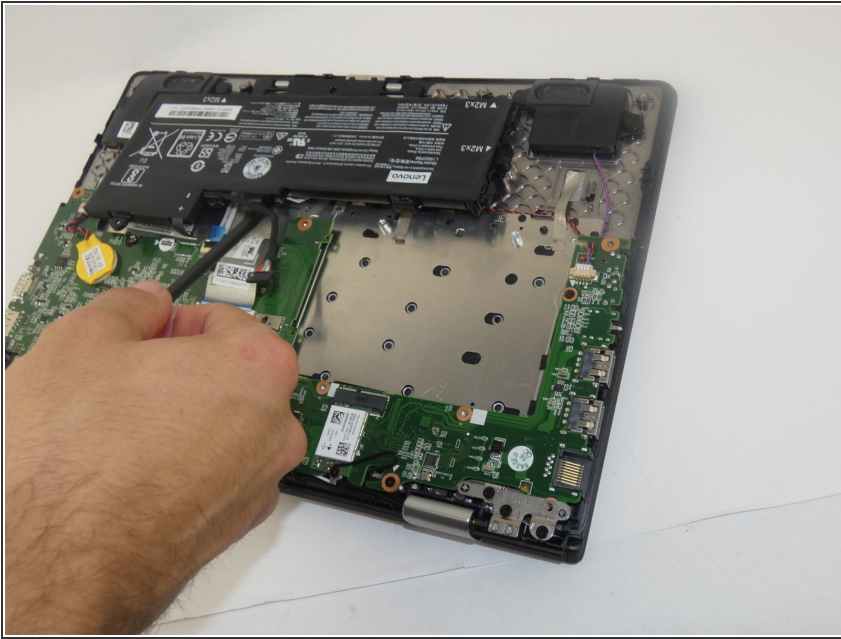
- Remove the connector attaching the battery to the motherboard.

Step 4



- Remove the four 4mm screws on the battery.

Step 5



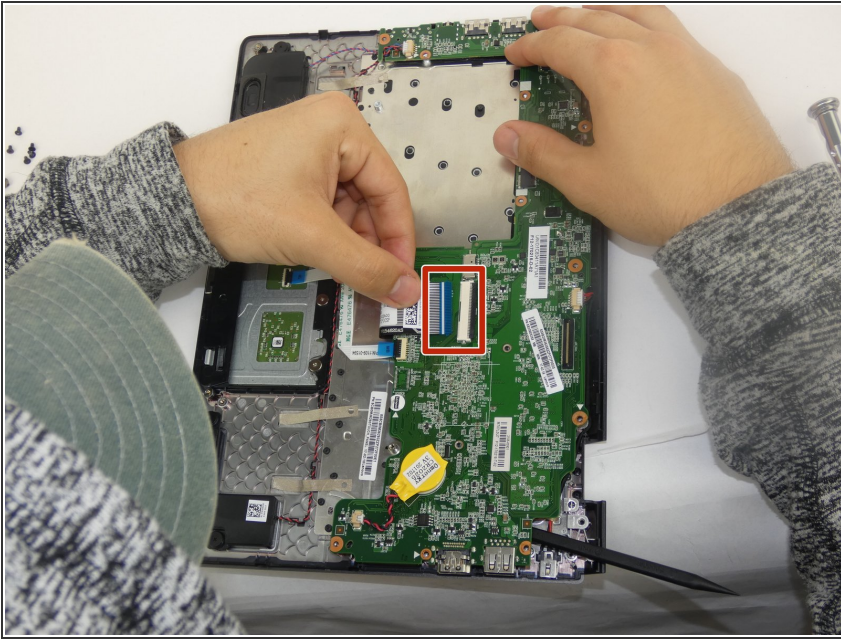
- Lift the battery with a spudger and remove.

Step 6 — Motherboard



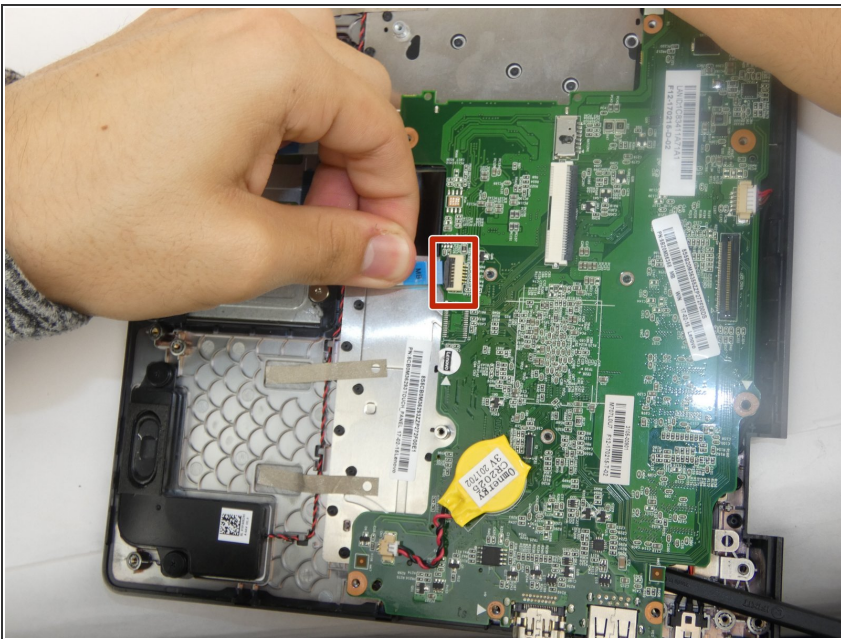
- Remove eleven 6mm screws.

Step 7



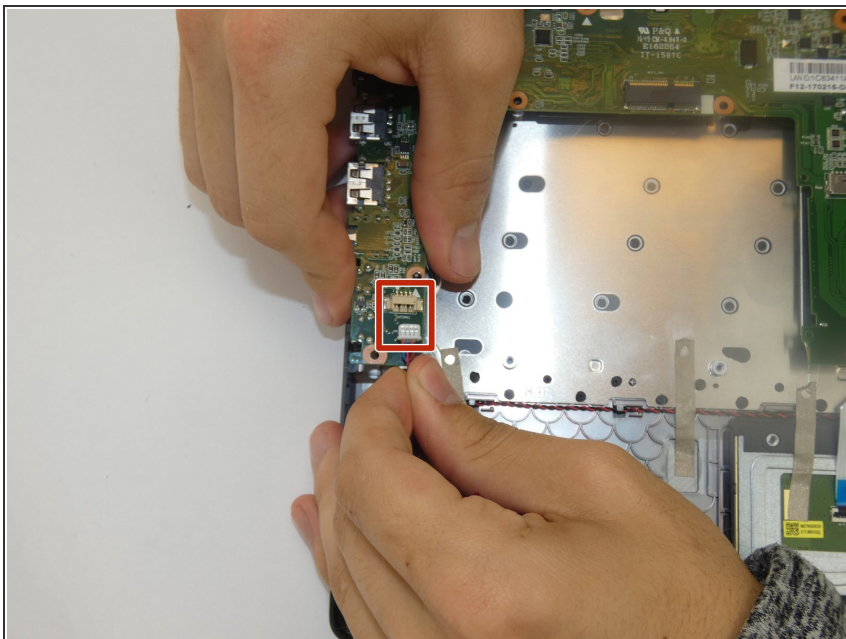
- Lift up black flap on the ZIF connector and pull the ribbon cable out.

Step 8



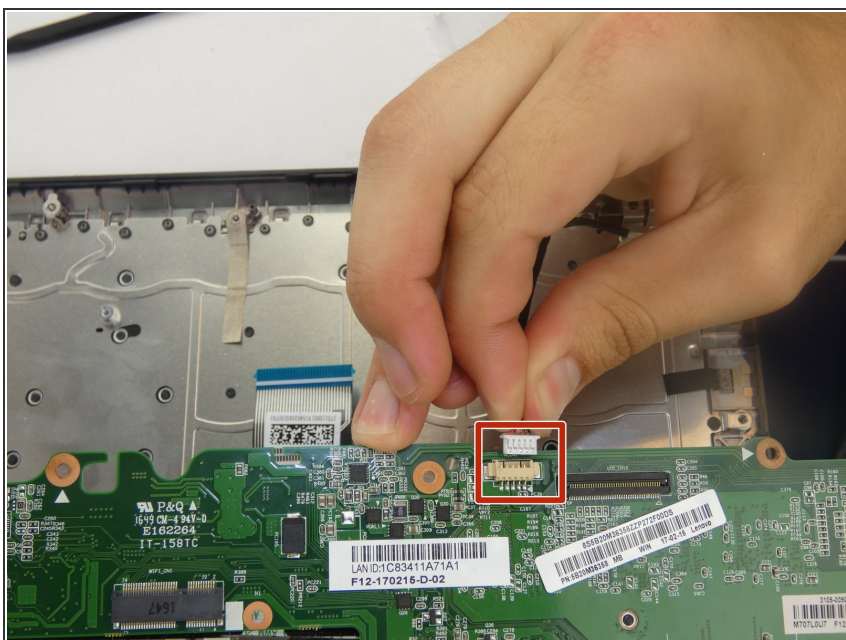
- Lift up on the black tab on the ZIF connector and pull the ribbon cable out.

Step 9



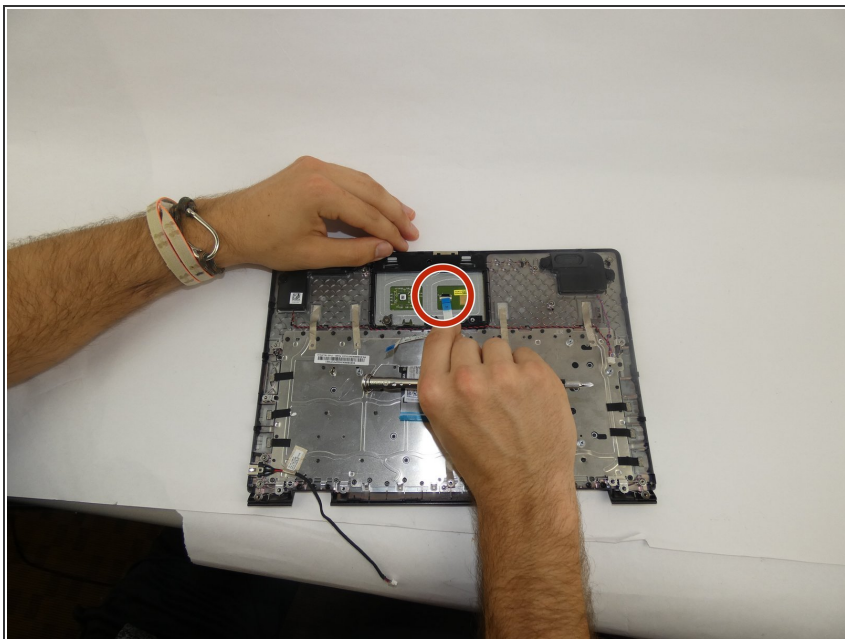
- Remove connector cable.

Step 10



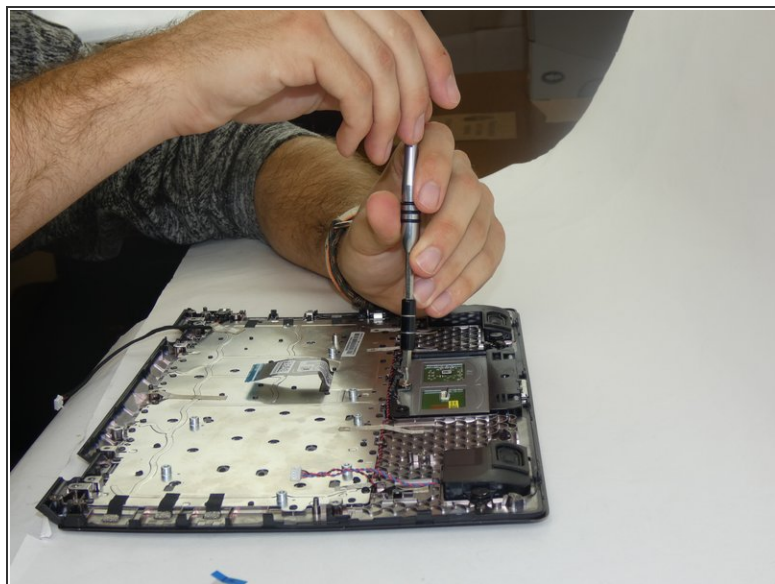
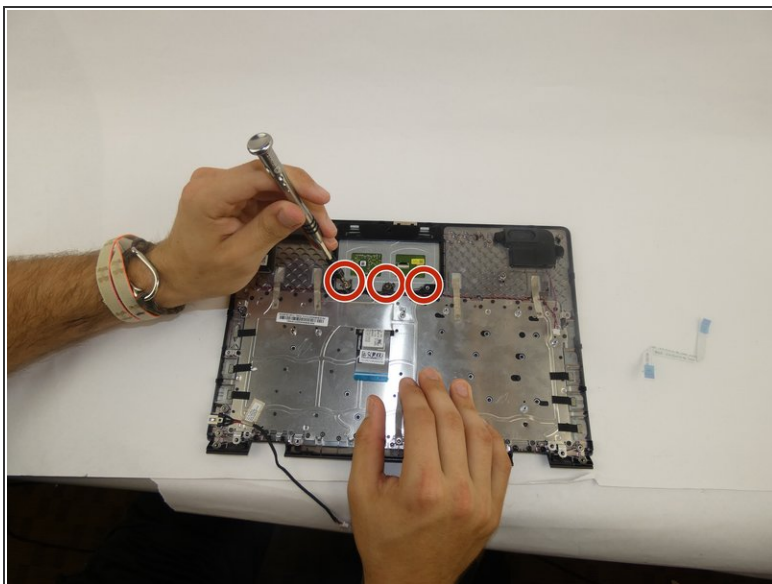
- Remove one last connector cable.
- Motherboard should now be completely disconnected and can be lifted off the cover to be replaced.

Step 11 — Touchpad



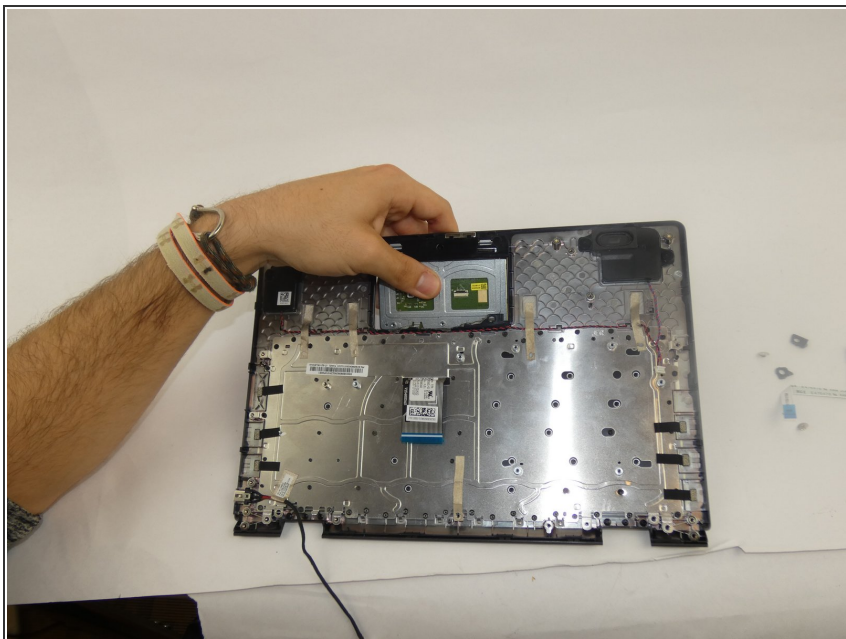
- i** Due to the amount of force required to remove the screws holding the touchpad, we recommend removing the motherboard before attempting this replacement to reduce the chances of damaging any components.
- Lift up the black tab on the ZIF connector and pull the ribbon cable out.

Step 12



- Remove three 8mm screws.

Step 13



- Push the touchpad outwards to remove it.

To reassemble your device, follow these instructions in reverse order.