



# Lenovo IdeaPad Flex 4-1470 Hard Drive Replacement

Changing the hard drive of Lenovo Laptop.

Written By: Heeral Patel



# INTRODUCTION

This guide will show you how to remove and replace the hard drive for this device.

Your hard drive may be failing if you're experiencing frequent crashes, frequent and cryptic error messages while performing typical activities, file names changing, or disappearing files.



## TOOLS:

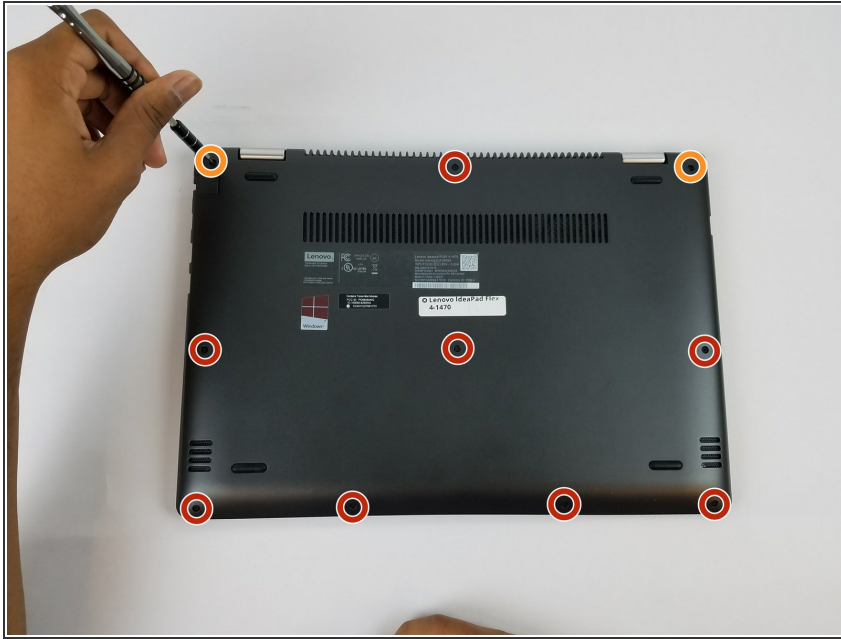
- [Phillips #0 Screwdriver](#) (1)
- [iFixit Opening Tools](#) (1)




## PARTS:

- [1 TB SSD / Upgrade Bundle](#) (1)
- [250 GB SSD / Upgrade Bundle](#) (1)
- [500 GB SSD / Upgrade Bundle](#) (1)
- [2 TB SSD / Upgrade Bundle](#) (1)

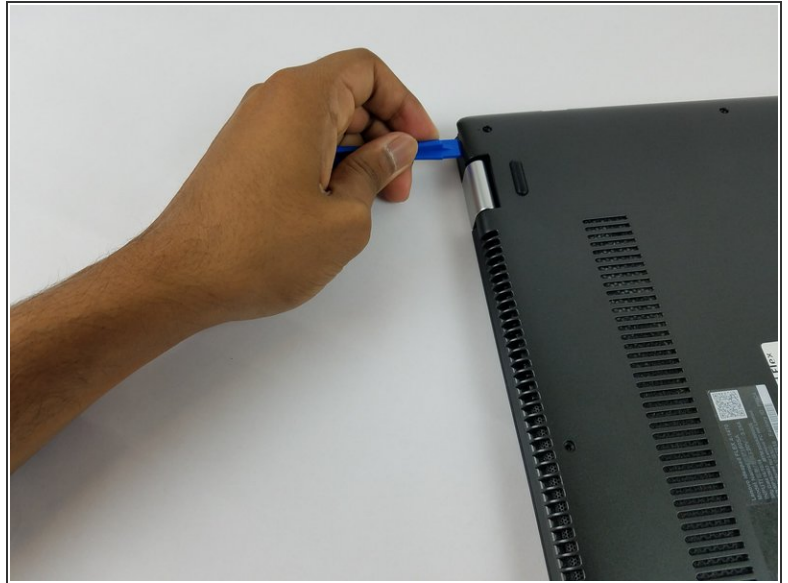
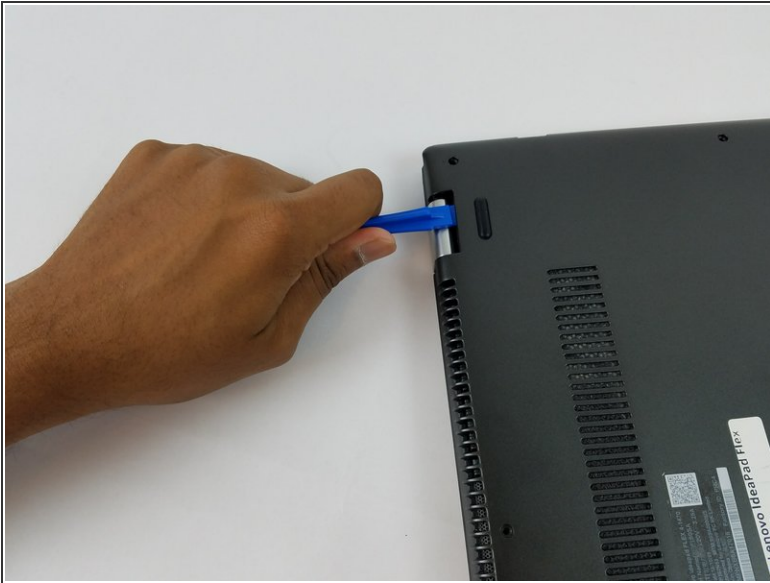
## Step 1 — Back Cover



 Ensure your computer is completely OFF before starting this guide.

- Remove the eight 6 mm screws using a Phillips #0 screwdriver.
- Remove the two 11 mm screws using a Phillips #0 screwdriver.

## Step 2



- Pry the back cover off by inserting the plastic opening tool at the hinges and wedging it between the Back cover and the body.
- Follow along the back edge with the plastic opening tool, lifting the cover off as you go. It is normal to hear snapping/clicking sounds as the back cover is held on by clips.
- Remove the cover.



## Step 3 — Hard Drive



- Remove the three 4 mm Phillips #0 screws holding the hard drive in place.
- **Note:** A security sticker is normally affixed to the upper-right screw that helps hold the drive in the machine.

## Step 4



- Remove the hard drive by pulling it out of its port (away from the hinges).
- ❗ It's normal to feel a lot of resistance, especially if this is the first time the hard drive is being removed. Just ensure that you have removed all three screws.

## Step 5



- Remove the four 3 mm Phillips #0 screws located on opposite sides of the hard drive.
- ❗ These screws hold the hard drive in the hard drive mounting bracket. All computers use a hard drive mounting bracket because the standard holes on hard drives are not in a convenient place for direct mounting. All laptop hard drives will fit in any laptop's mounting bracket but the brackets are specific to the laptop.

## Step 6



- Remove the hard drive from the mounting bracket.

To reassemble your device, follow these instructions in reverse order.