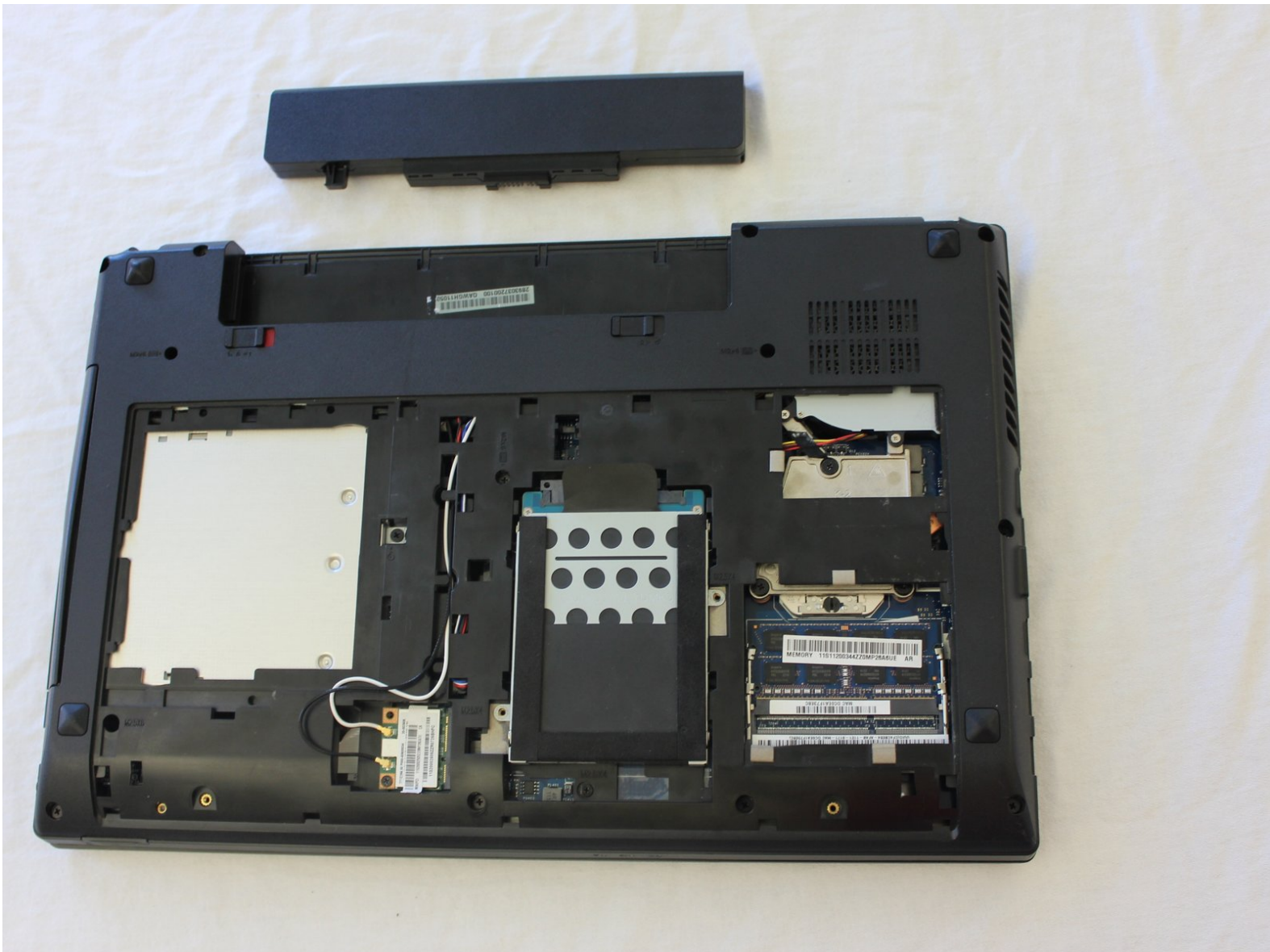




Lenovo IdeaPad N586 Wifi card Replacement

How to replace the wifi card

Written By: Christopher





TOOLS:

- [Phillips #1 Screwdriver](#) (1)
-

Step 1 — Battery



- To unlock the battery, flip the laptop over so that the bottom is facing upward. Then unlock the left clip by pushing the clip to the left.

Step 2



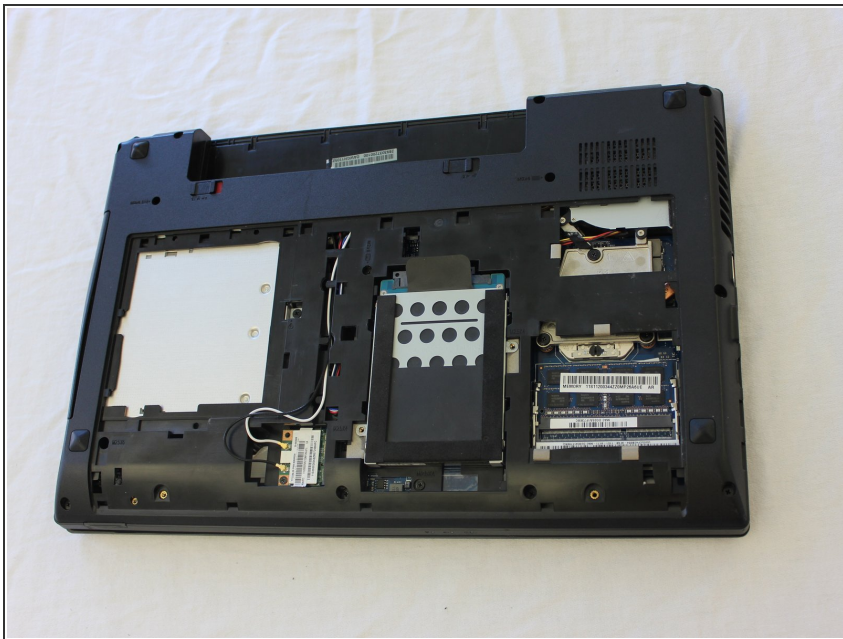
- Now push the right clip to the right and hold it while using your other hand to pull the battery out.

Step 3 — Back Panel



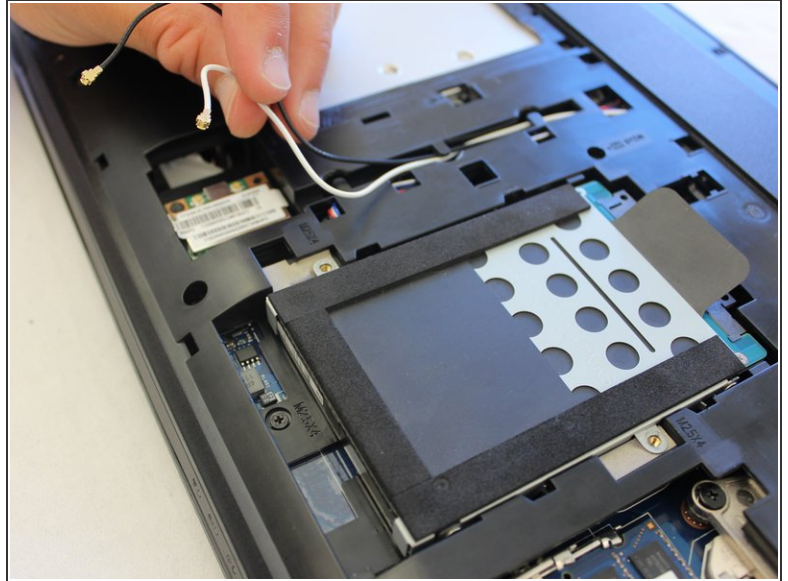
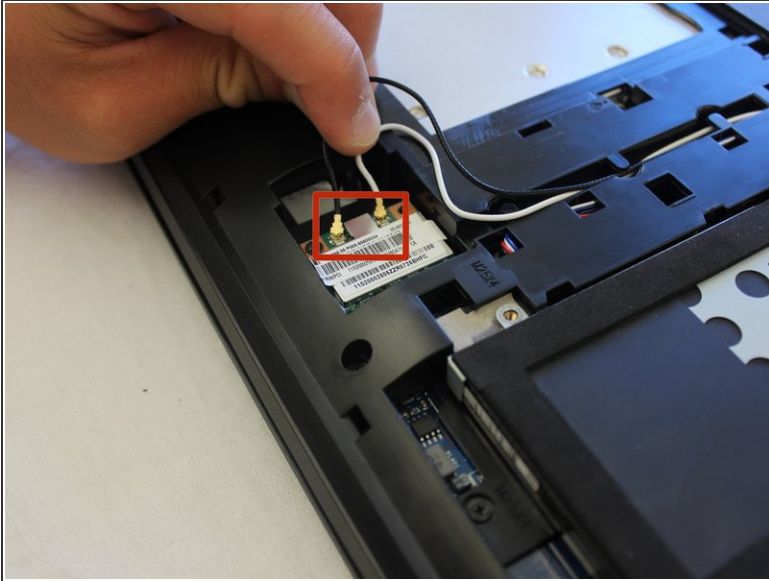
- Remove the two screws highlighted.

Step 4



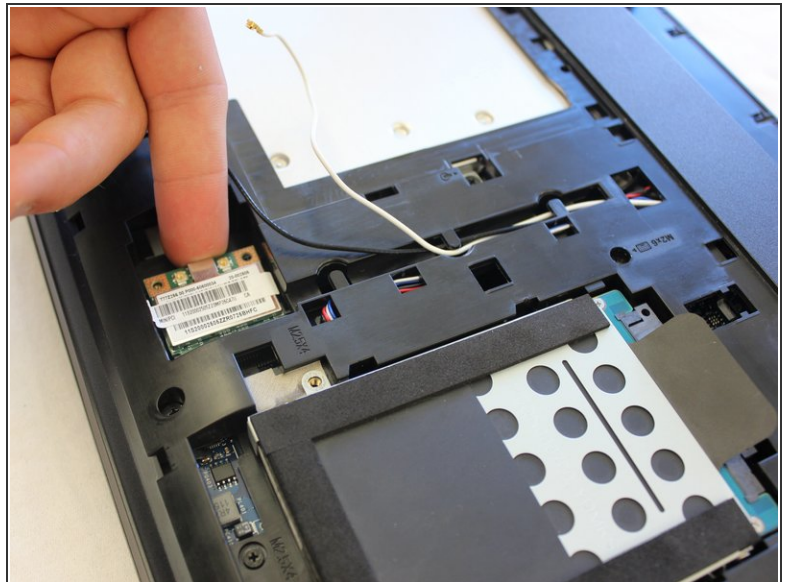
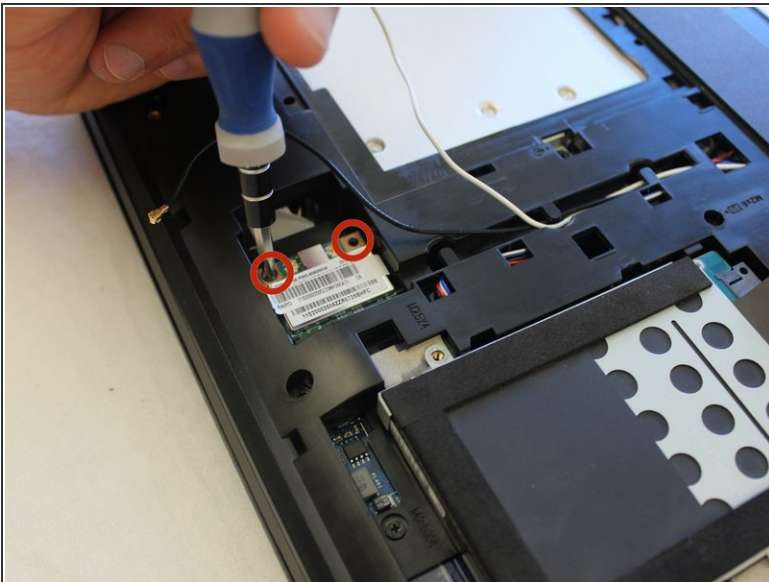
- This is the back of the laptop with the cover removed.

Step 5 — Wifi card



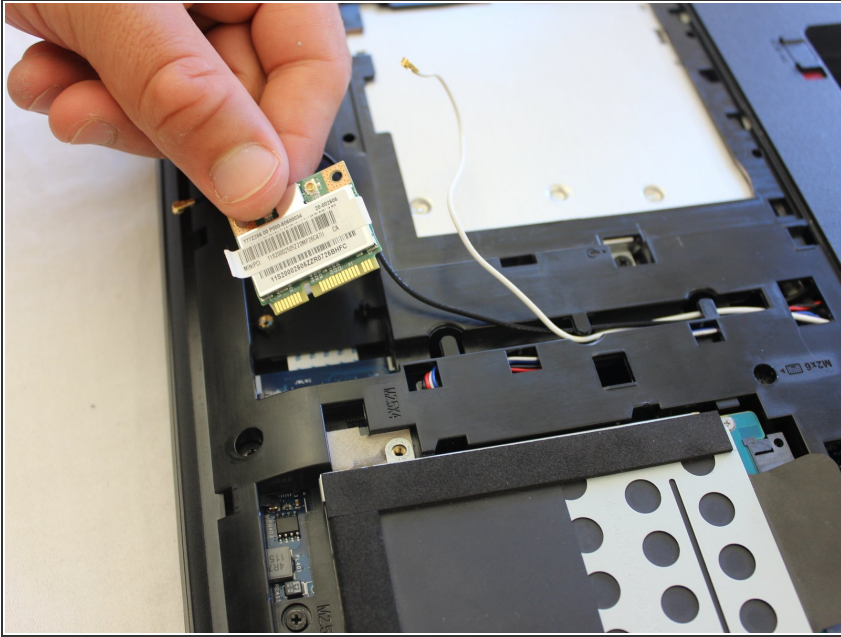
- Remove the white and black wires.

Step 6



- Next, unscrew the wifi card

Step 7



- Pull out the wifi card.

To reassemble your device, follow these instructions in reverse order.