



Lenovo IdeaPad S10-2 Wireless WiFi Card Replacement

Wireless WiFi Cards allow laptops to connect to the internet.

Written By: Lucy Mendez



INTRODUCTION

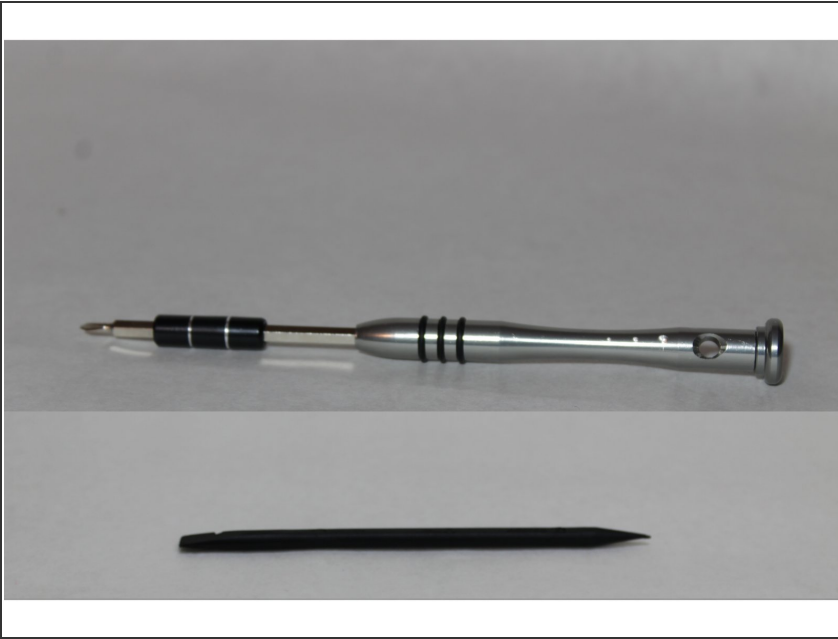
If you're experiencing problems connecting to the internet there may be issues with your wireless card. The replacement requires the flat end of a spudger and a Phillips J0 head screwdriver. The cost of a wireless card ranges between \$7 to \$20.



TOOLS:

- [Spudger](#) (1)
-

Step 1 — Wireless WiFi Card



- The tools needed are the blunt edge of the spudger and a Phillips J0 head screwdriver.

⚠ Ensure your device is powered off before continuing.

Step 2



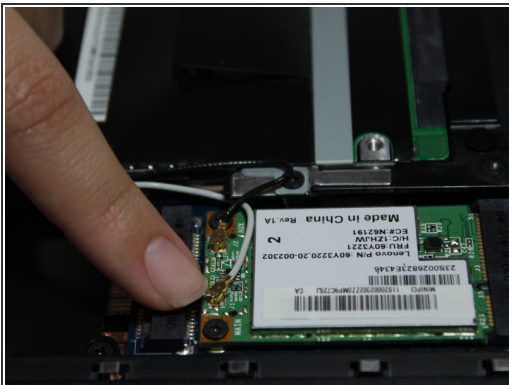
- Turn the laptop over to begin.
- Remove the two 40 mm screws with a Phillips J0 head screwdriver.

Step 3



- The WiFi card is found near the bottom of the panel.

Step 4



 Do not use the metal precision tweezers as shown.

- **Using the blunt end of the spudger**, wedge the spudger beneath the connector and pull straight up to remove the white wire. Repeat to remove the black connector.
- ☑ When reinstalling these U.FL connectors, hold the connector in place and gently push down. The connector should snap into place like a button.

Step 5



- Remove the two 40 mm screws using a Phillips J0 head screwdriver.
- Lift and remove the WiFi card.

To reassemble your device, follow these instructions in reverse order.