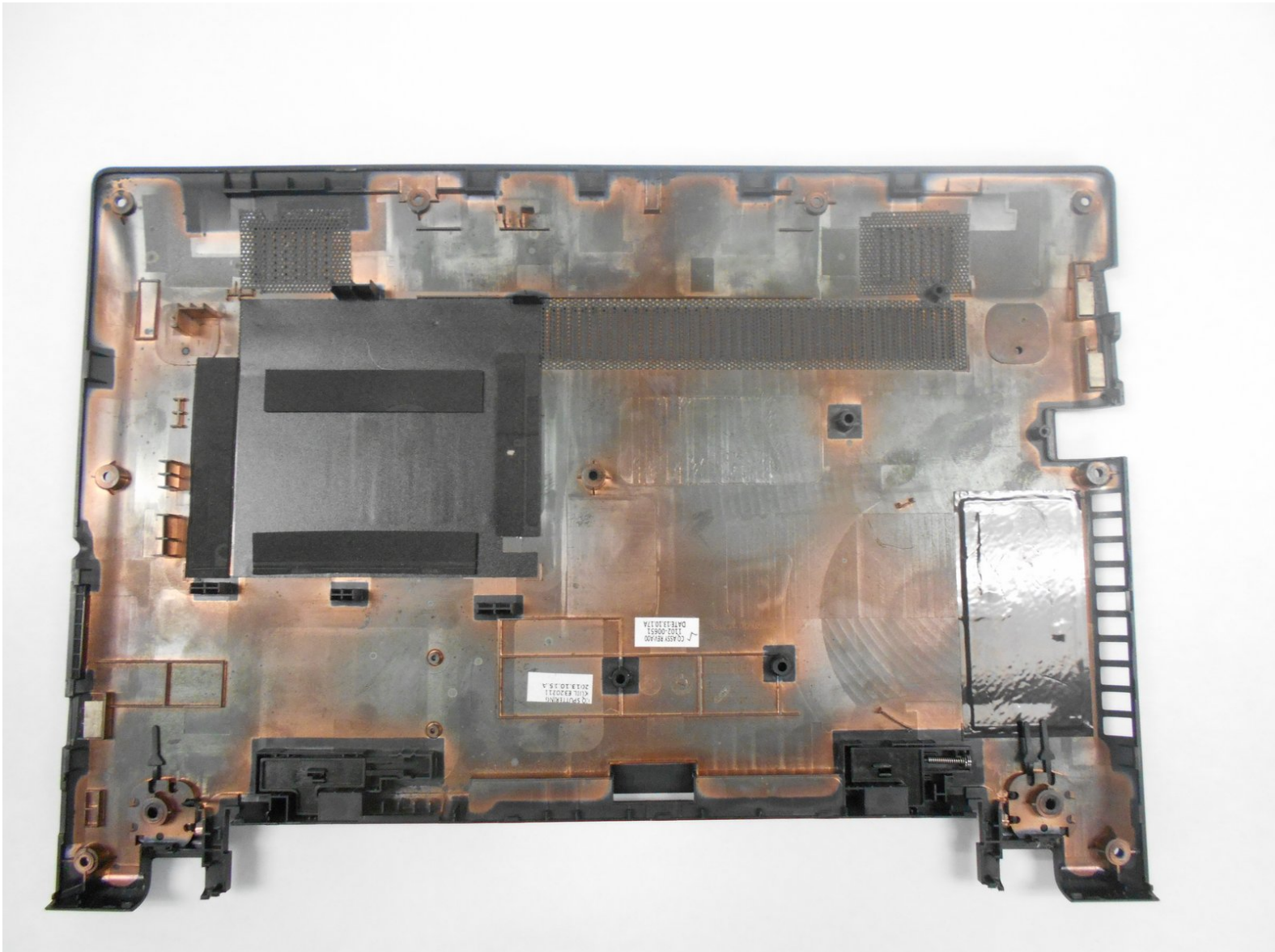




# Lenovo IdeaPad S210 Touch Back Panel Replacement

This guide will teach you how to remove the Back Panel from the Lenovo IdeaPad S210 Touch.

Written By: Zack Colman



---

## INTRODUCTION

This guide will teach you how to replace the back panel of your Lenovo IdeaPad S210 Touch. The back panel of any device helps keep out unwanted substances.

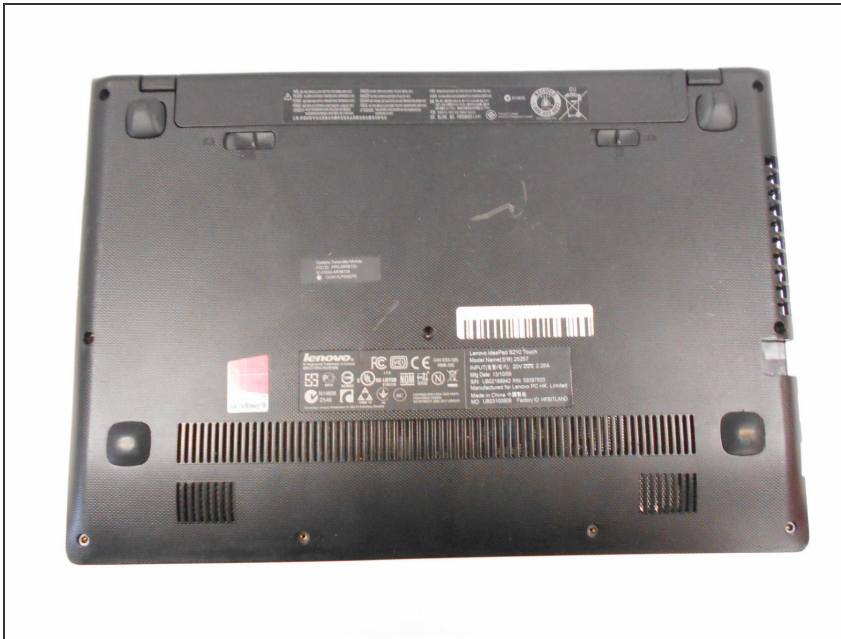
Removing this panel is essential for any system repairs. Please note that keeping the panel clean also helps the laptop maintain an ideal temperature.



### TOOLS:

- [iFixit Opening Tools](#) (1)
  - [Phillips #0 Screwdriver](#) (1)
-

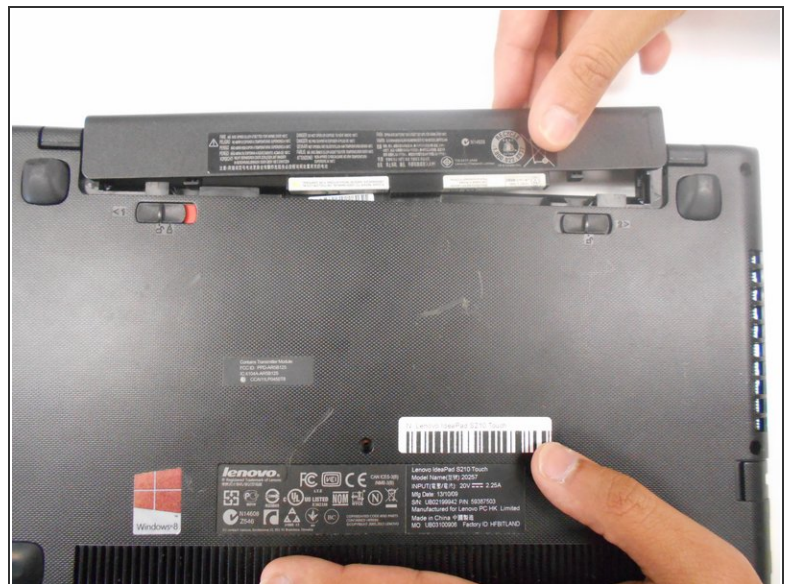
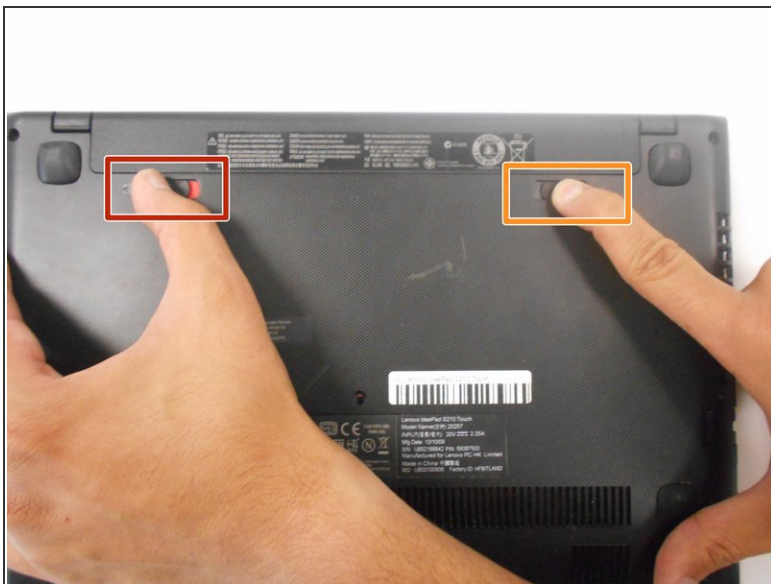
## Step 1 — Battery



⚠ Ensure your device is **unplugged** and **shut down**.

- Place the laptop down with the cooling vents facing upwards.

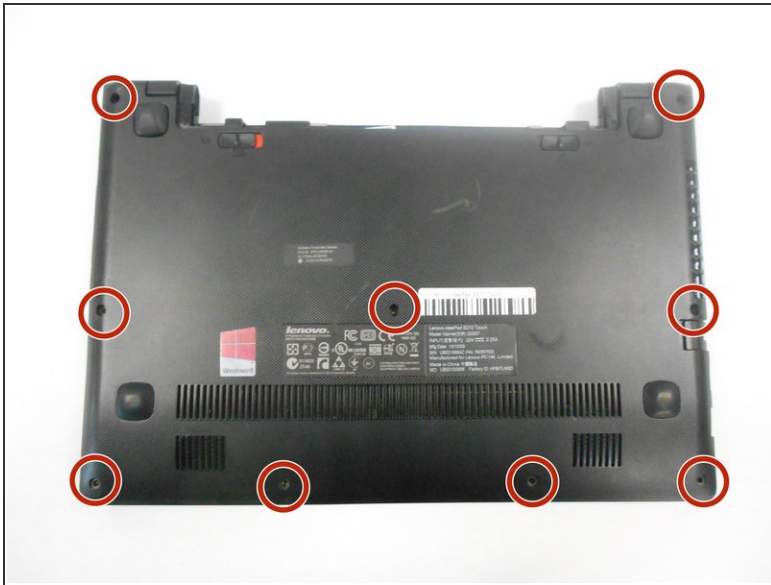
## Step 2



- Use your finger to slide the latch towards the unlocked position (away from the other latch). If done correctly you will see red.
- Slide the second latch to the unlocked position while gently pulling the battery away from the laptop.



## Step 3 — Back Panel



- Using the #0 Phillips screwdriver, remove the nine 4mm screws on the back panel.

## Step 4



- Gently pull the two rubber feet closest to battery away from the device. Using a #0 Phillips screwdriver, remove the 5mm screw under each rubber foot.

## Step 5



- Slowly begin working your plastic opening tool along the panel to undo the latches around the laptop.

To reassemble your device, follow these instructions in reverse order.