



# Lenovo IdeaPad S210 Touch Hard Drive Replacement

This guide will show you how to remove the Hard Drive from your Lenovo IdeaPad S210 Touch.

Written By: Zack Colman



---

## INTRODUCTION

Use this guide to replace a failing or outdated hard drive in your Lenovo IdeaPad S210 Touch.

Hard drives store and retrieve data in your computer. If your hard drive is failing, you may notice your device making strange noises, crashing often, and/or displaying error messages. The Lenovo IdeaPad S210 Touch uses a hard drive that is 7mm thick and 2.5in long.

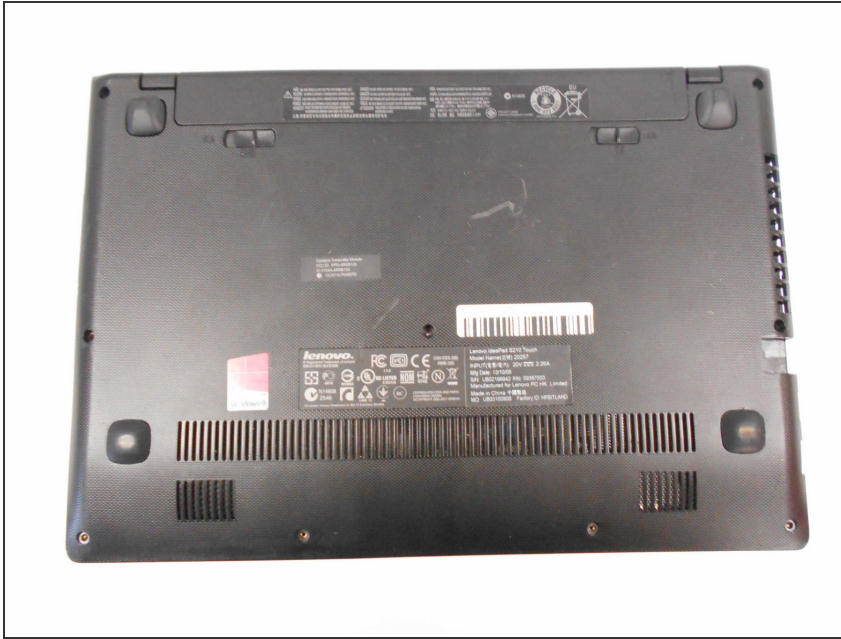
Be sure to back up your hard drive before replacement so you don't lose any data. Make sure to completely power off and disconnect the device from any external power sources before starting the process.



### TOOLS:

- [Phillips #00 Screwdriver](#) (1)
  - [iFixit Opening Tools](#) (1)
  - [Phillips #0 Screwdriver](#) (1)
-

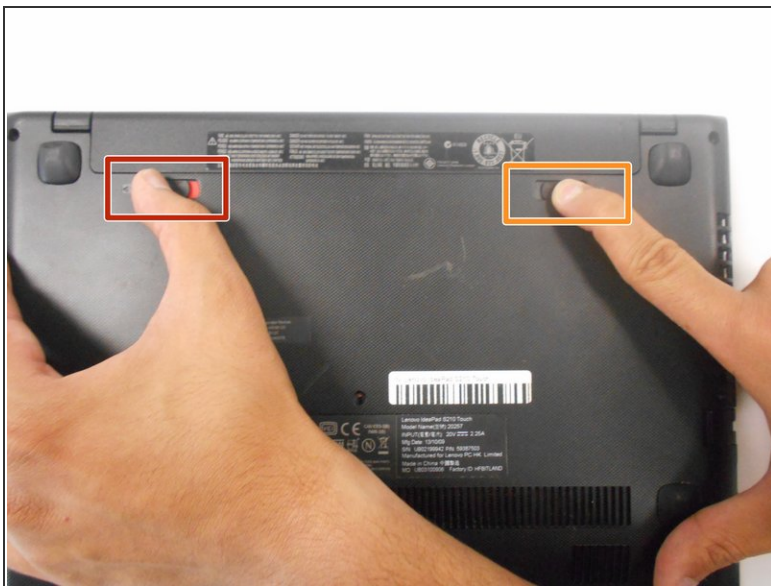
## Step 1 — Battery



⚠ Ensure your device is **unplugged** and **shut down**.

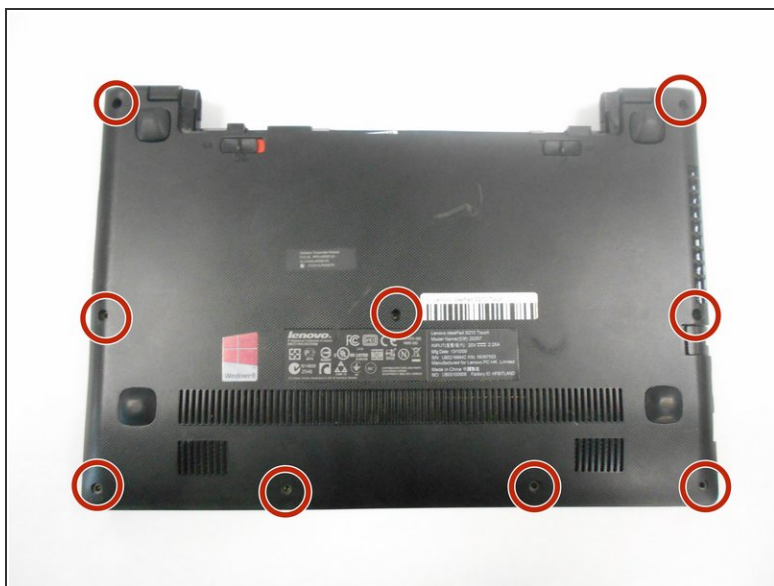
- Place the laptop down with the cooling vents facing upwards.

## Step 2



- Use your finger to slide the latch towards the unlocked position (away from the other latch). If done correctly you will see red.
- Slide the second latch to the unlocked position while gently pulling the battery away from the laptop.

## Step 3 — Back Panel



- Using the #0 Phillips screwdriver, remove the nine 4mm screws on the back panel.

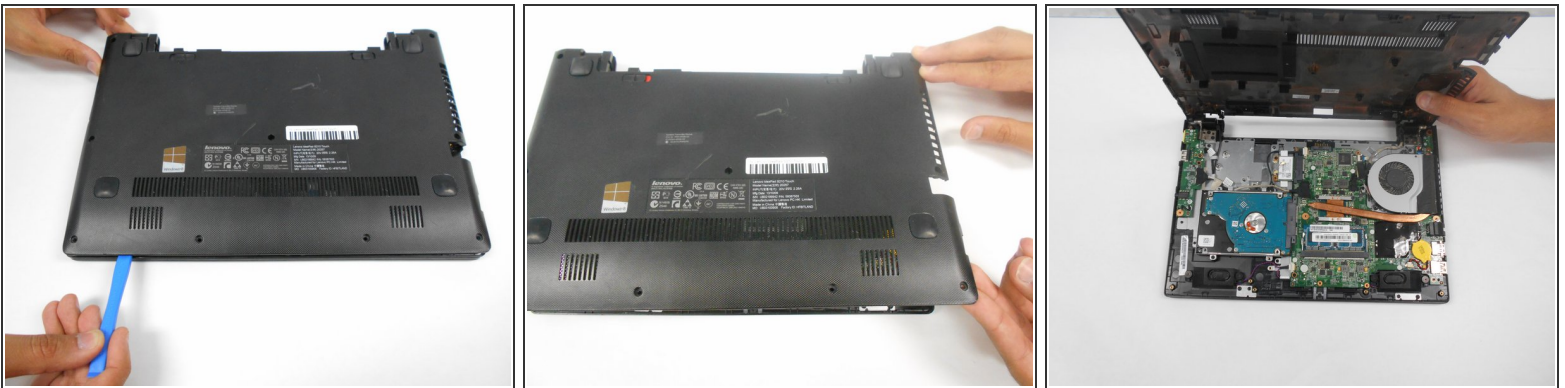


## Step 4



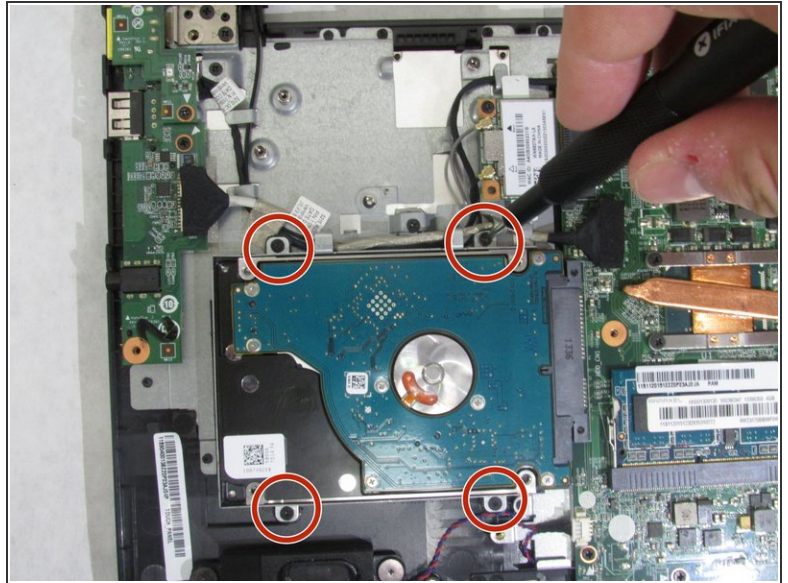
- Gently pull the two rubber feet closest to battery away from the device. Using a #0 Phillips screwdriver, remove the 5mm screw under each rubber foot.

## Step 5



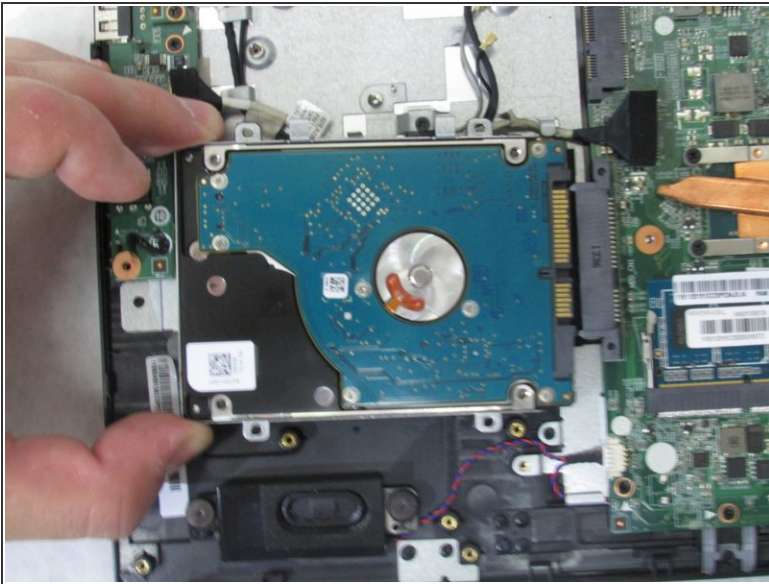
- Slowly begin working your plastic opening tool along the panel to undo the latches around the laptop.

## Step 6 — Hard Drive



- Using a #0 Phillips screwdriver, remove the four 4mm screws that secure the hard drive bracket to the motherboard.

## Step 7



- Slide your hard drive away from your motherboard until fully removed.




Be careful not to snag any wires routed along the battery side of the hard drive.




## Step 8



 This step is only necessary if you are swapping your old hard drive for a new one.

- Using a Phillips #0 screwdriver, remove four 2.5mm screws, two per side, to release the hard drive from its mounting bracket. These screws are directly next to each mounting screw you removed previously.

 Install the mounting brackets onto the new hard drive during reassembly.

To reassemble your device, follow these instructions in reverse order.