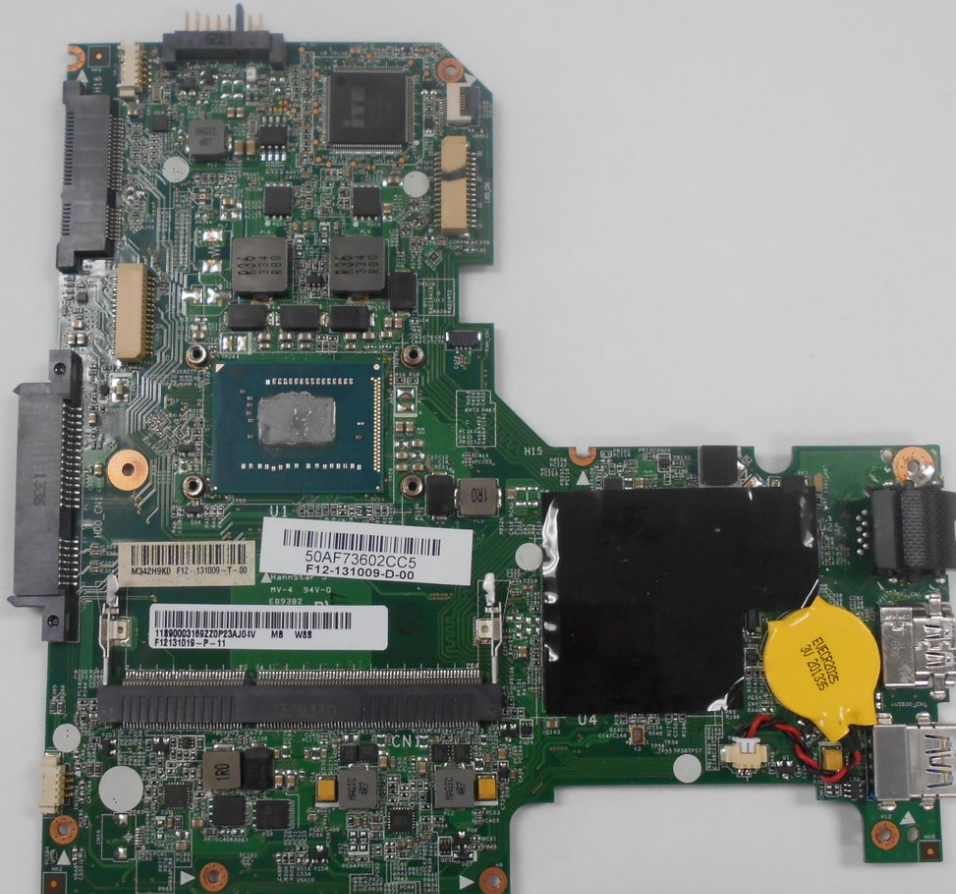




# Lenovo IdeaPad S210 Touch Motherboard Replacement

This guide will show you how to remove the Motherboard from your Lenovo IdeaPad S210 Touch.

Written By: Zack Colman



## INTRODUCTION

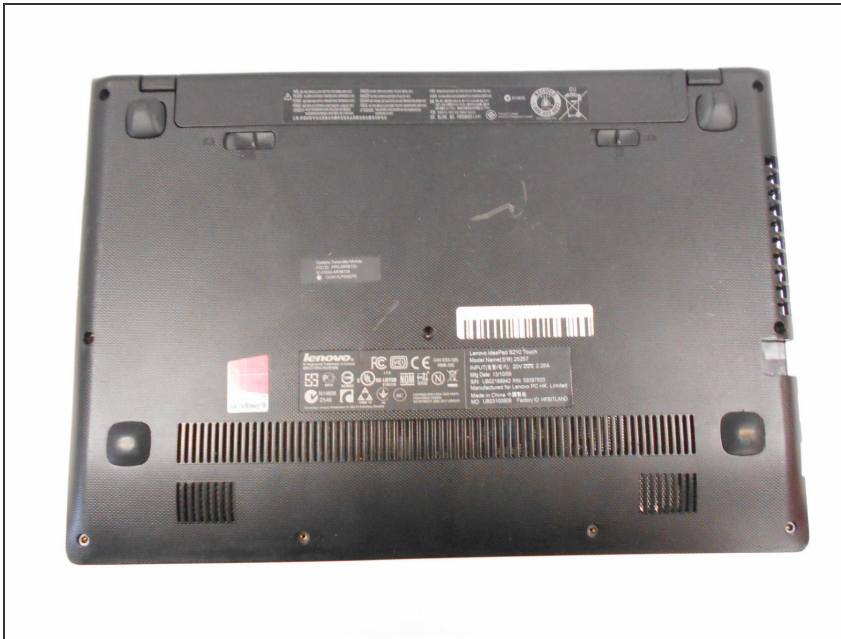
Motherboard failure is a relatively rare occurrence, however replacing or removing the motherboard may be necessary for other repairs.

---

### TOOLS:

- [iFixit Opening Tools](#) (1)
  - [Phillips #0 Screwdriver](#) (1)
  - [Phillips #00 Screwdriver](#) (1)
  - [Spudger](#) (1)
-

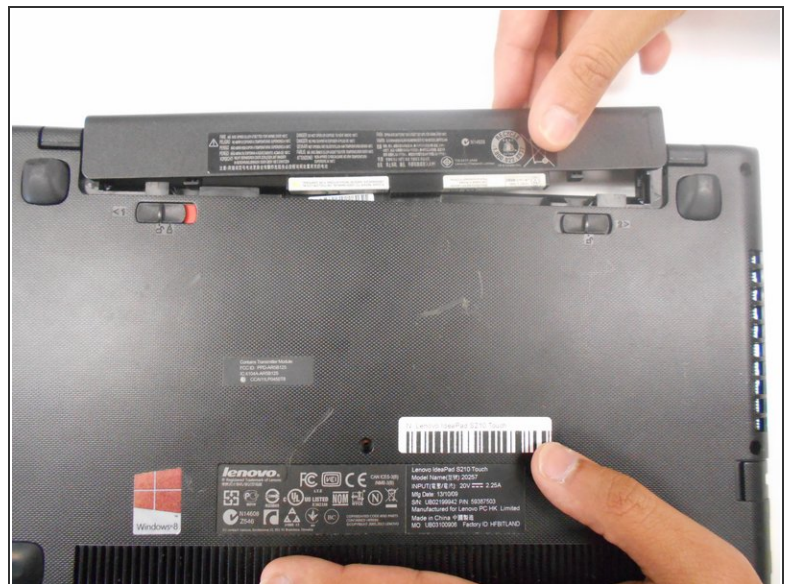
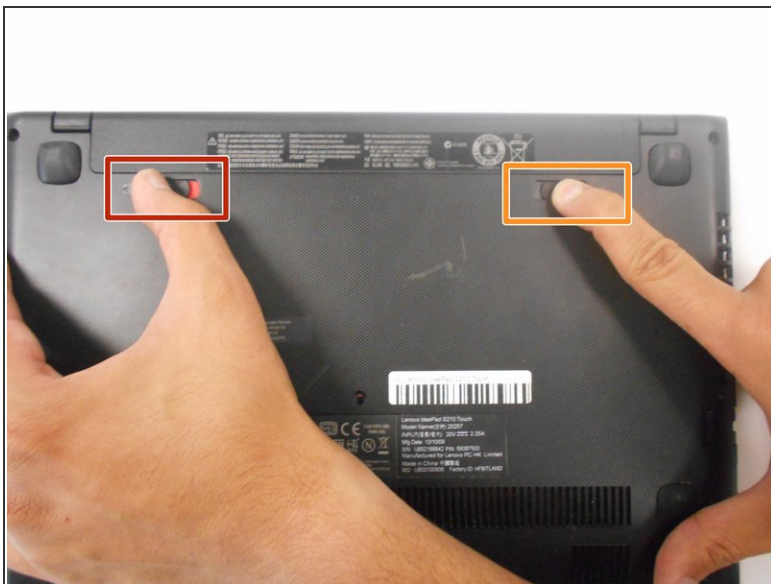
## Step 1 — Battery



⚠ Ensure your device is **unplugged** and **shut down**.

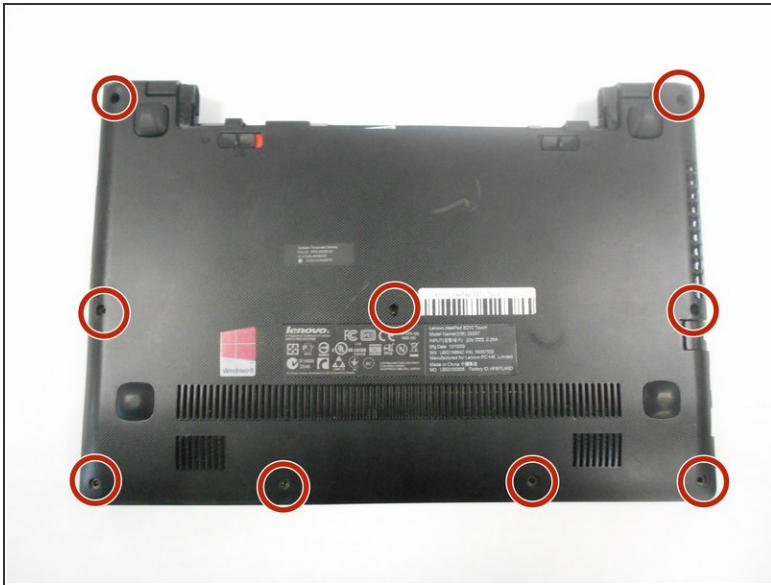
- Place the laptop down with the cooling vents facing upwards.

## Step 2



- Use your finger to slide the latch towards the unlocked position (away from the other latch). If done correctly you will see red.
- Slide the second latch to the unlocked position while gently pulling the battery away from the laptop.

## Step 3 — Back Panel



- Using the #0 Phillips screwdriver, remove the nine 4mm screws on the back panel.

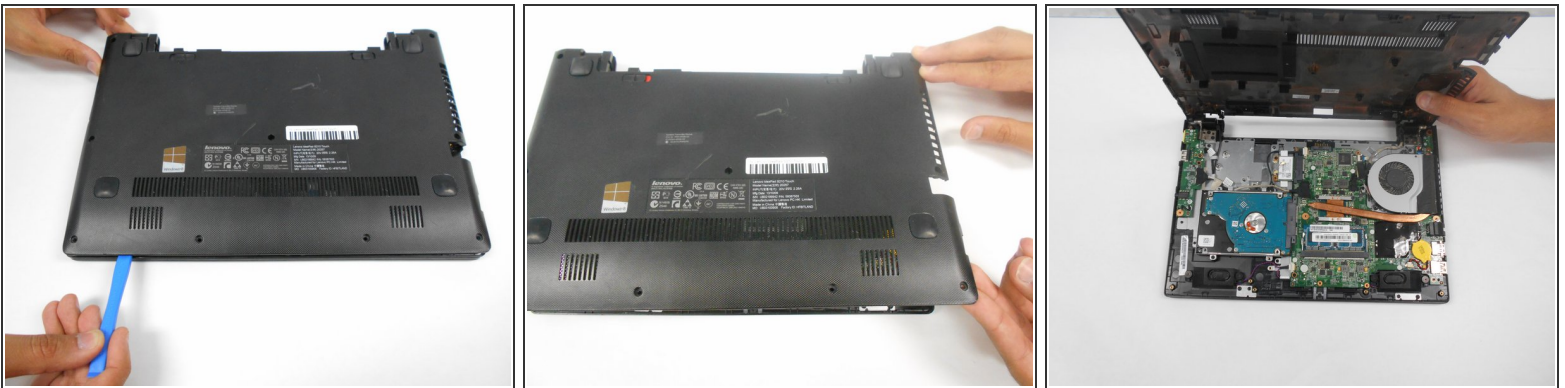


## Step 4



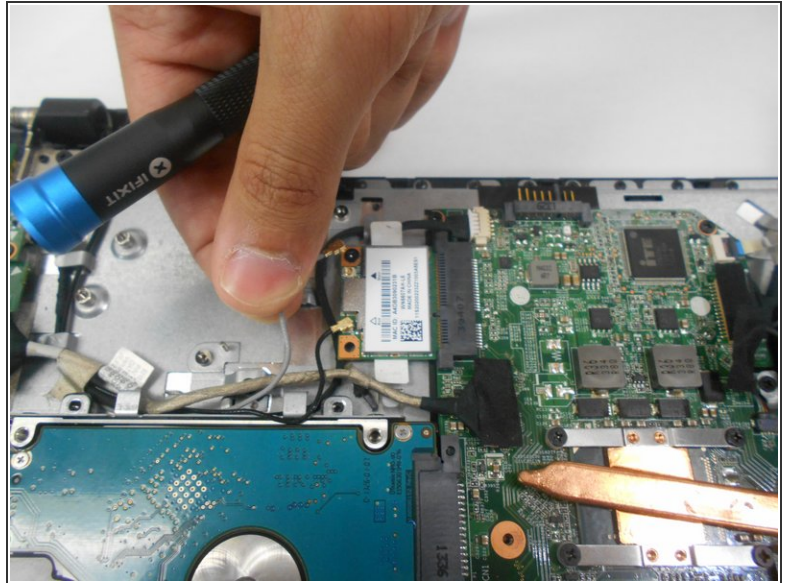
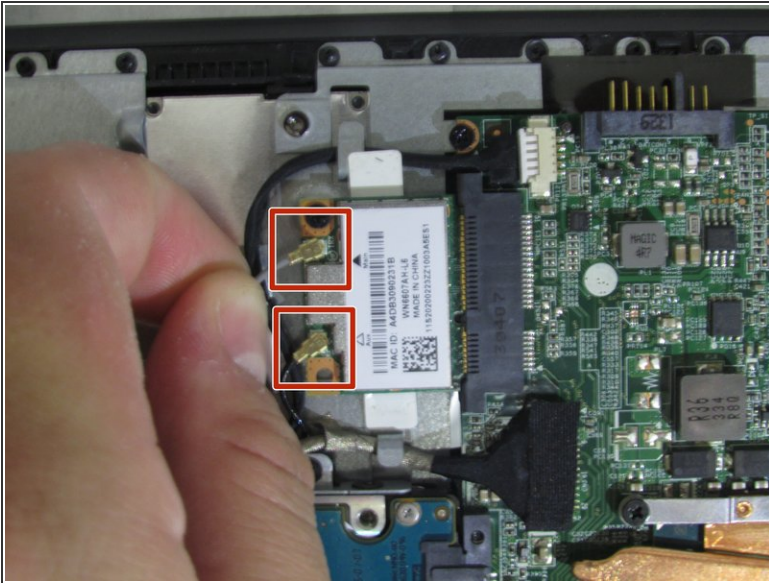
- Gently pull the two rubber feet closest to battery away from the device. Using a #0 Phillips screwdriver, remove the 5mm screw under each rubber foot.

## Step 5



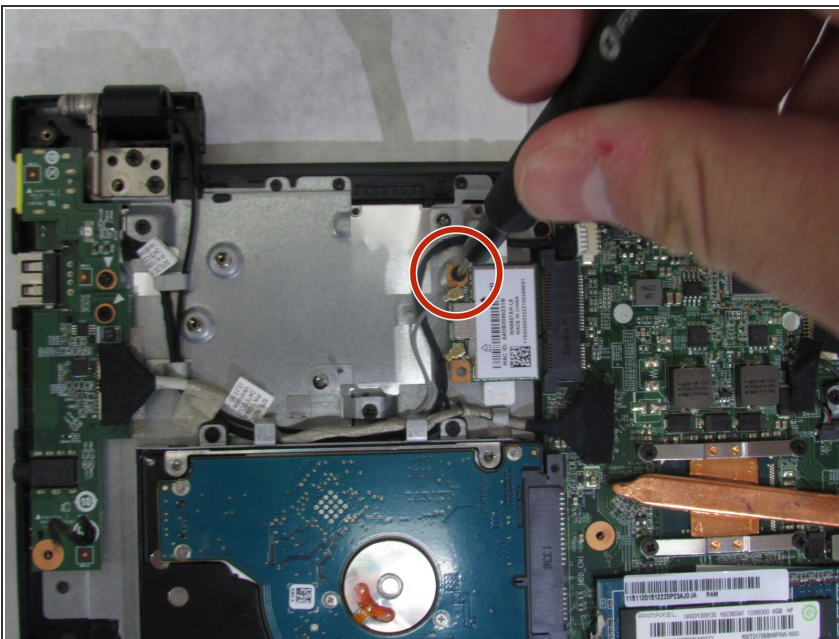
- Slowly begin working your plastic opening tool along the panel to undo the latches around the laptop.

## Step 6 — Wi-Fi Network Card



- Remove both antenna wires by pulling upwards gently.

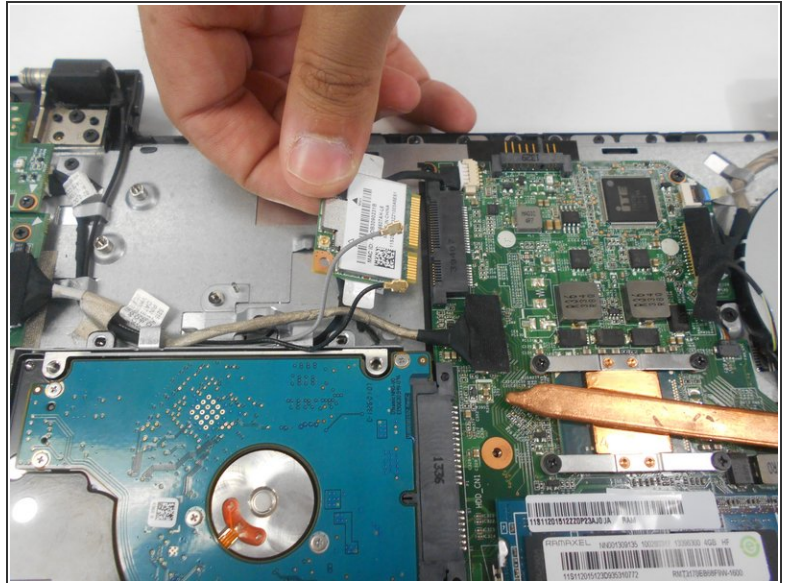
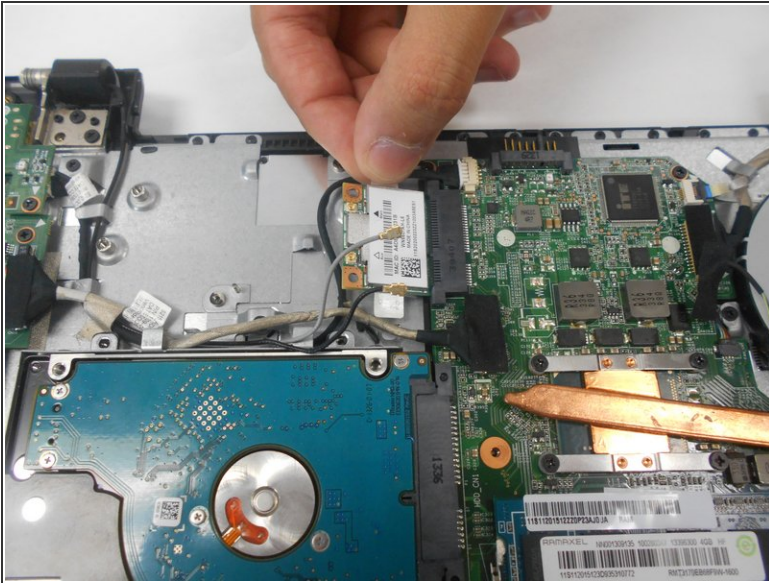
## Step 7



- Using the #00 Phillips screwdriver, remove one 3mm screw from the network card.

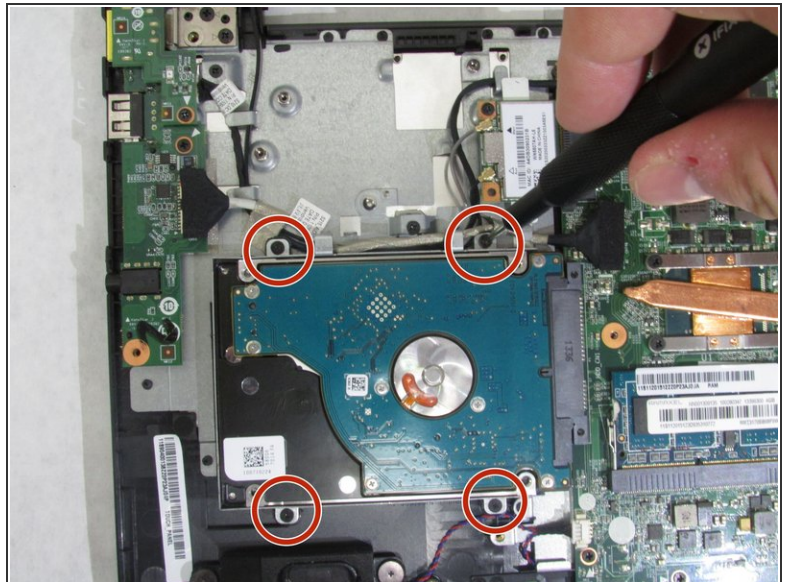


## Step 8



- Slide Wi-Fi network card away from motherboard and remove gently.

## Step 9 — Hard Drive



- Using a #0 Phillips screwdriver, remove the four 4mm screws that secure the hard drive bracket to the motherboard.



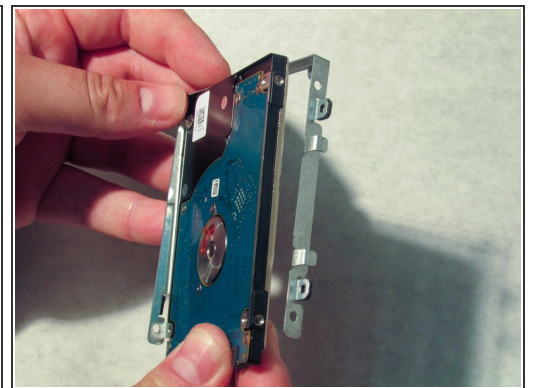
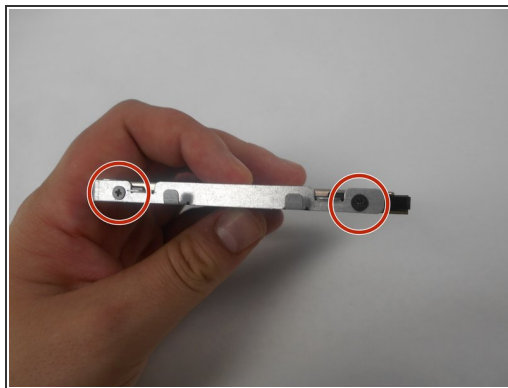
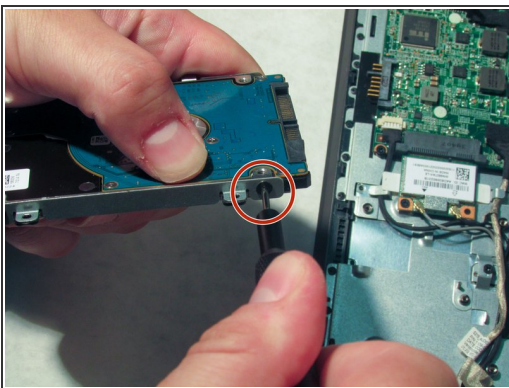
## Step 10



- Slide your hard drive away from your motherboard until fully removed.

⚠ Be careful not to snag any wires routed along the battery side of the hard drive.

## Step 11



**i** This step is only necessary if you are swapping your old hard drive for a new one.

- Using a Phillips #0 screwdriver, remove four 2.5mm screws, two per side, to release the hard drive from its mounting bracket. These screws are directly next to each mounting screw you removed previously.

★ Install the mounting brackets onto the new hard drive during reassembly.



## Step 12 — Cooling Fan



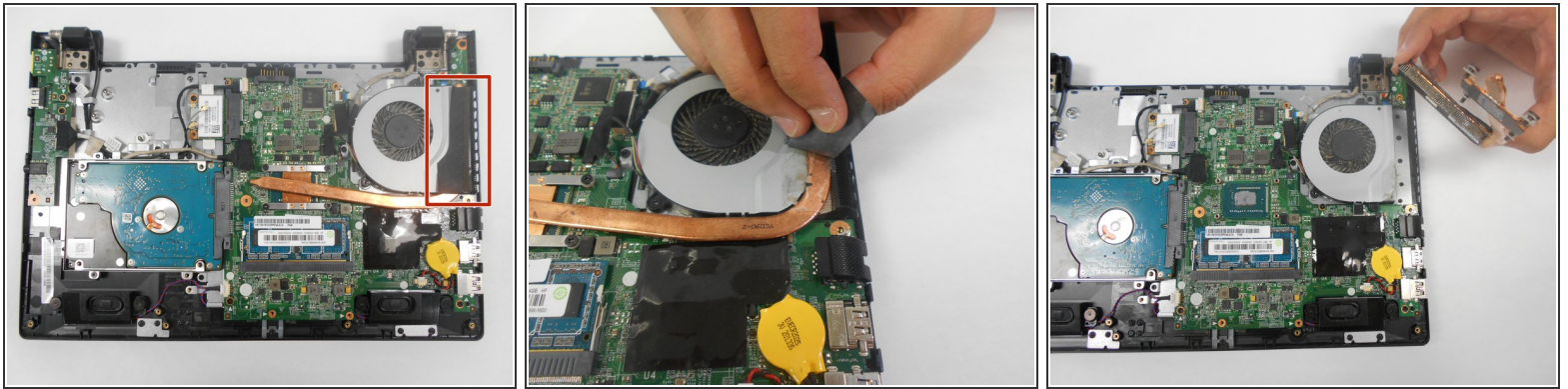
- ❗ Many of the wire connections to the motherboard are secured by tape for vibration protection. Your device may or may not have this tape.
- If any tape is present, remove all tape from the area within the red area.

## Step 13



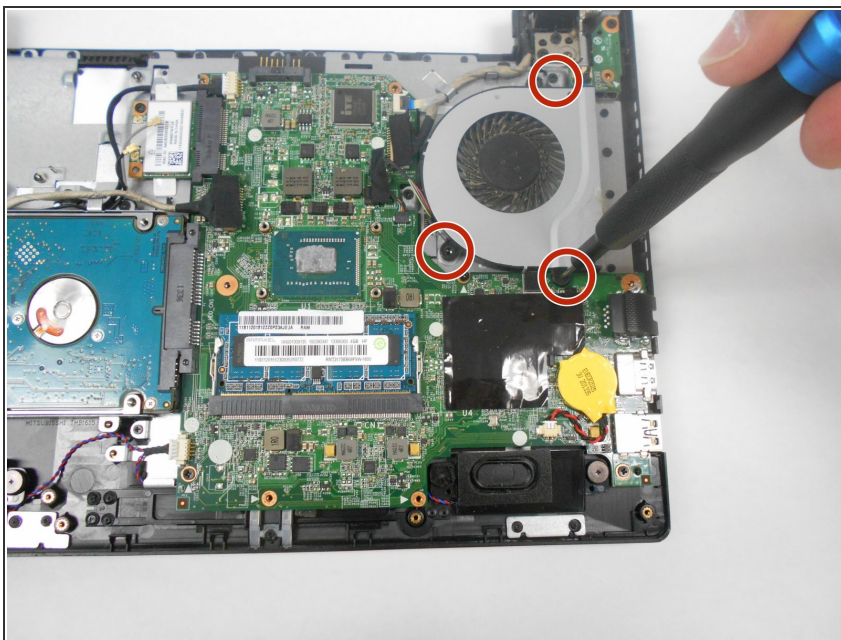
- Using a #0 Phillips screwdriver, unscrew the four 3mm captive screws securing the copper tube onto the motherboard.
- ❗ These captive screws are secured by plastic washer to the copper tube and will remain in the heat sink assembly during removal.

## Step 14



- Remove the tape connecting the copper tubing to the cooling fan.
- Lift and remove the heat sink assembly.

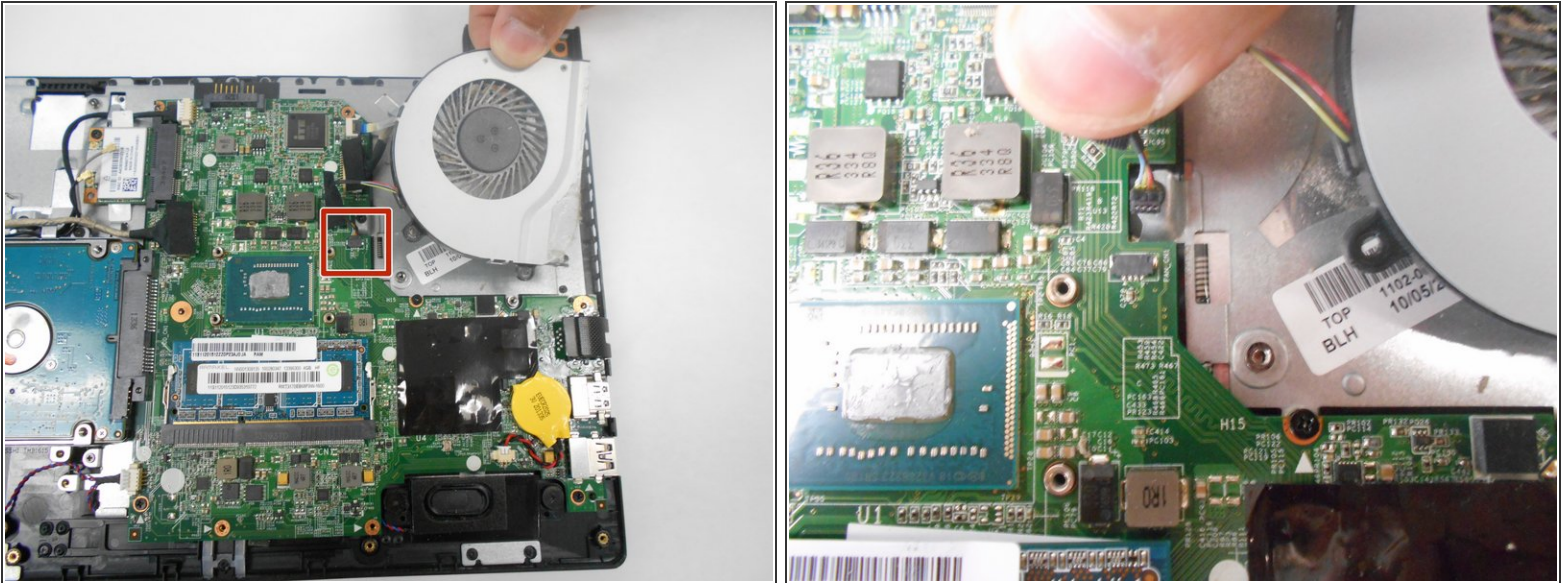
## Step 15



- Using a #0 Phillips screwdriver, remove the three 3mm screws around the perimeter of the fan.

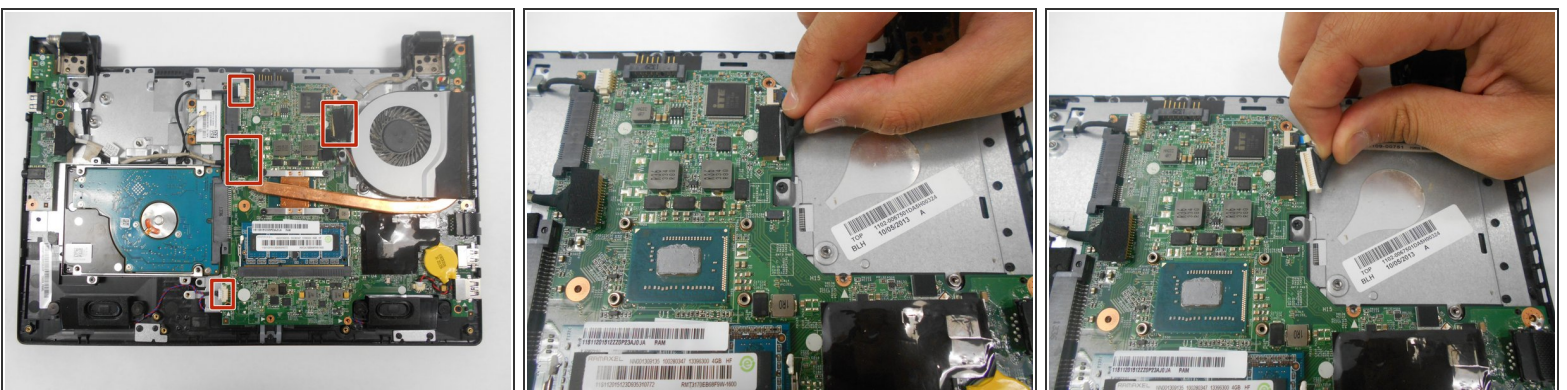


## Step 16



- Remove the wiring from the motherboard by gently pulling the wire connector at the base of the wires.
- Once the wires are removed, the cooling fan assembly is disconnected. You may now remove the cooling fan.

## Step 17 — Motherboard



- i** Your device may or may not have tape securing wired connections. If it is present, it must be removed before disconnecting cabling.
- Remove four cables connected to motherboard by pulling gently on connector at base of cables.

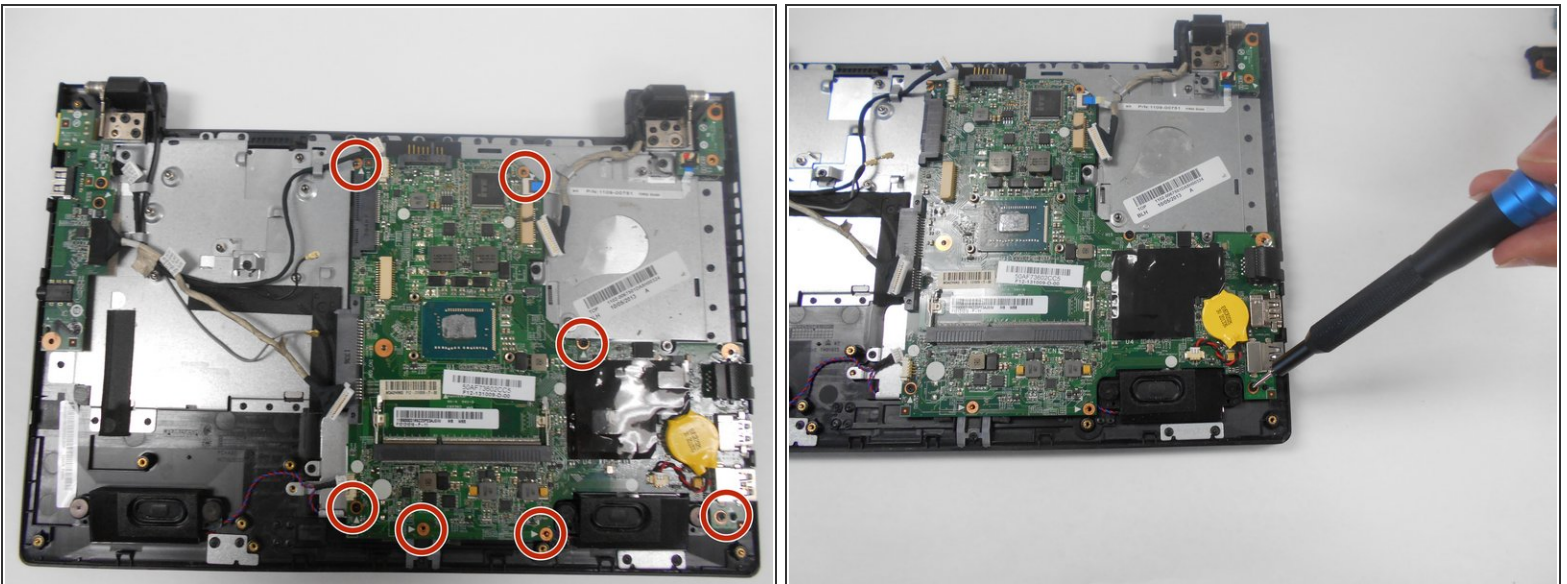


## Step 18



- Use a spudger to lift the connector lock to the small ribbon cable attached near where the cooling fan was located.
- After unlocking the connector, gently pull the removal tab on the ribbon cable to remove completely.

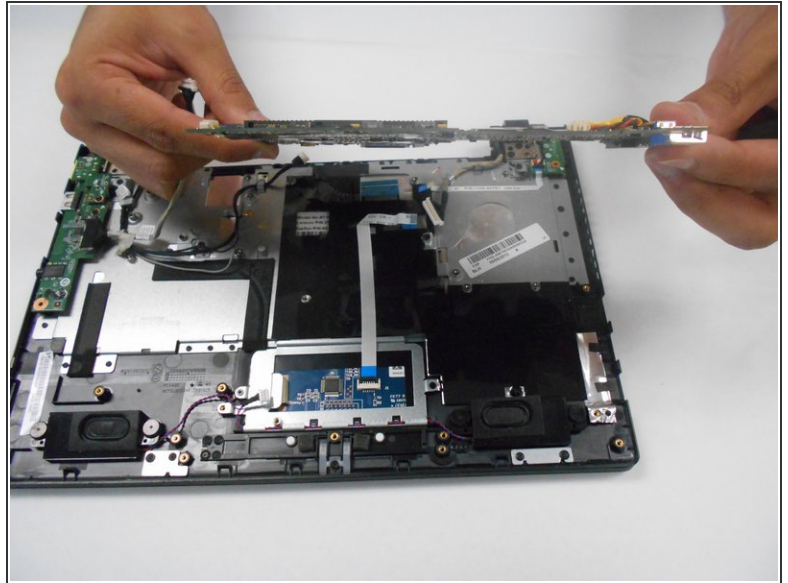
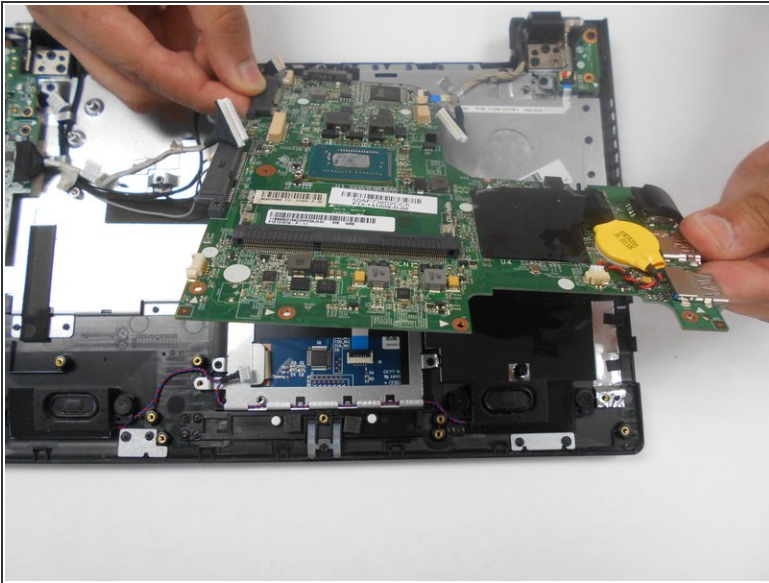
## Step 19



- Using a #0 Phillips screwdriver, remove the seven 3mm screws securing the motherboard to the chassis.

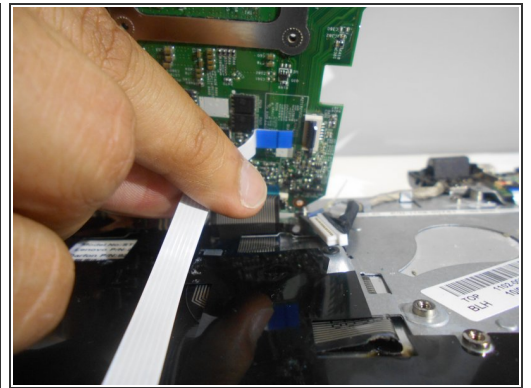
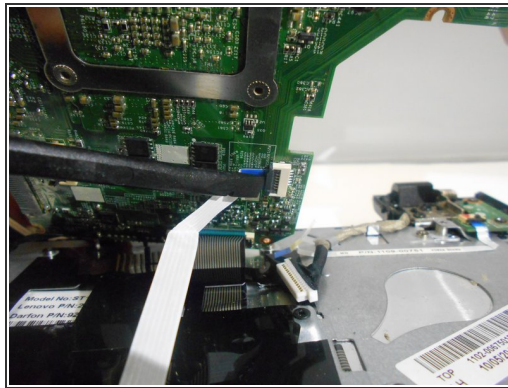


## Step 20



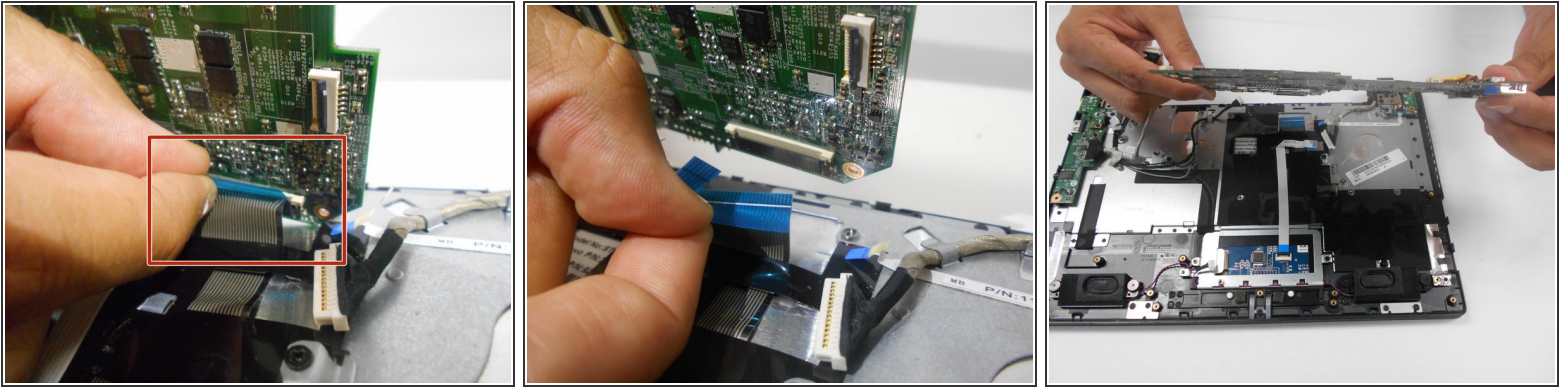
- Slowly tilt the motherboard forward so you can access the bottom.

## Step 21



- Using a spudger, remove the smaller of the two ribbon cables by lifting on the black connector.
- Once connector is lifted, gently pull on the ribbon cable to remove it.

## Step 22



- Remove the second (and last) ribbon cable from the motherboard by gently pulling on the blue pull tab.
- Lift and remove motherboard from laptop chassis.

To reassemble your device, follow these instructions in reverse order.