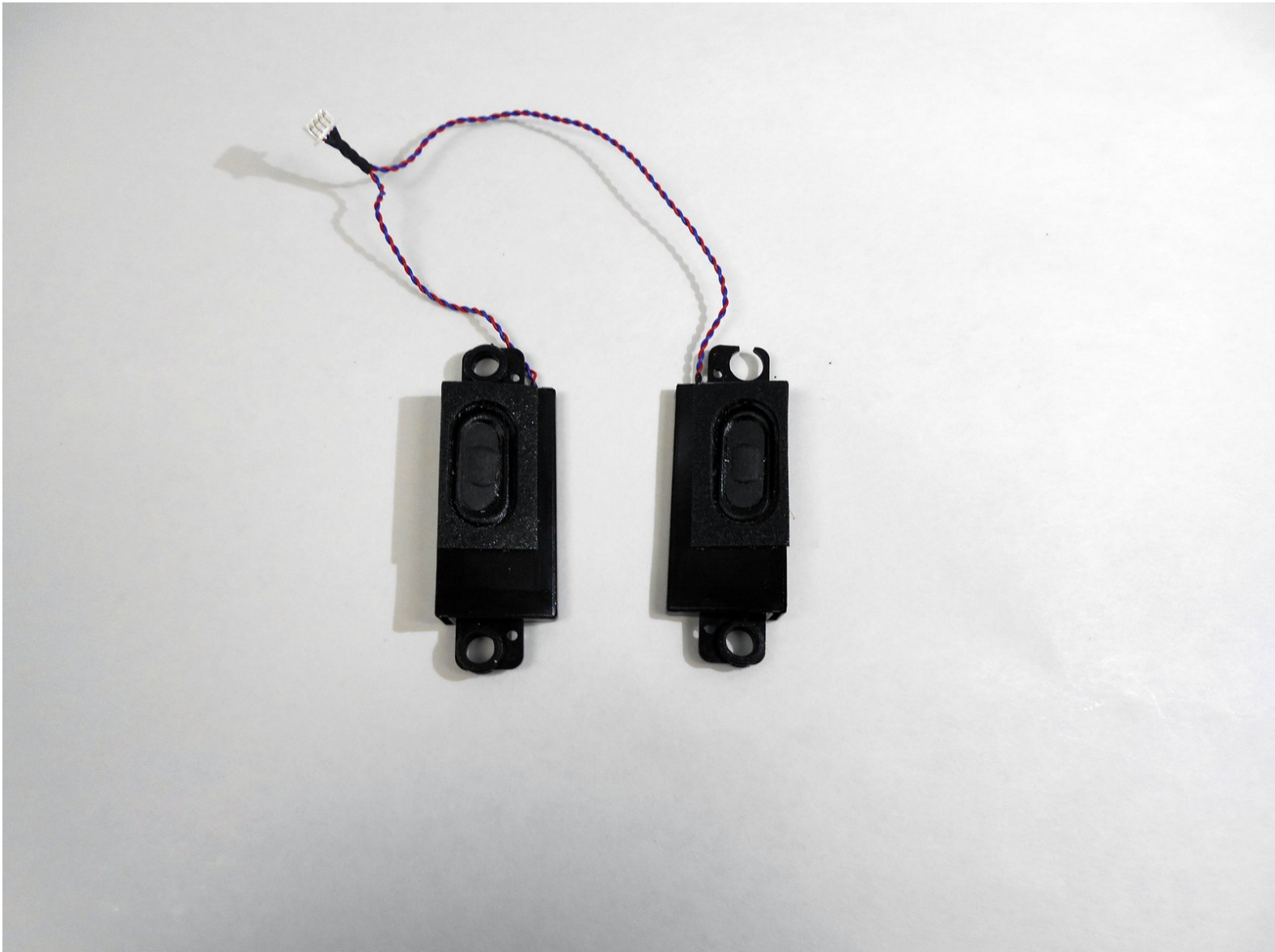




Lenovo IdeaPad S210 Touch Speaker Replacement

This guide will show you how to remove your speakers.

Written By: Zack Colman



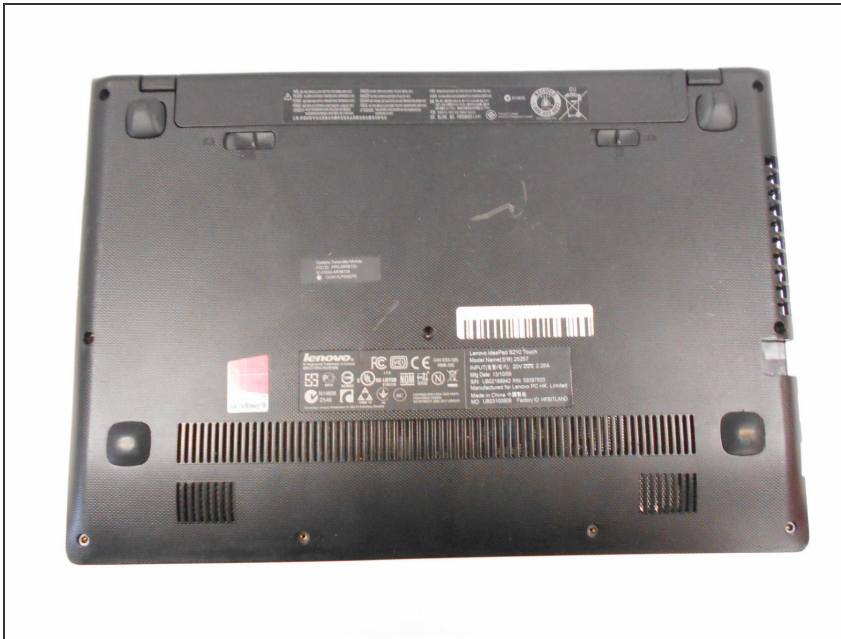
INTRODUCTION

Replacing your speakers may be necessary if they are producing scratchy audio or none at all.

TOOLS:

- [Spudger](#) (1)
 - [iFixit Opening Tools](#) (1)
 - [Phillips #0 Screwdriver](#) (1)
 - [Phillips #00 Screwdriver](#) (1)
-

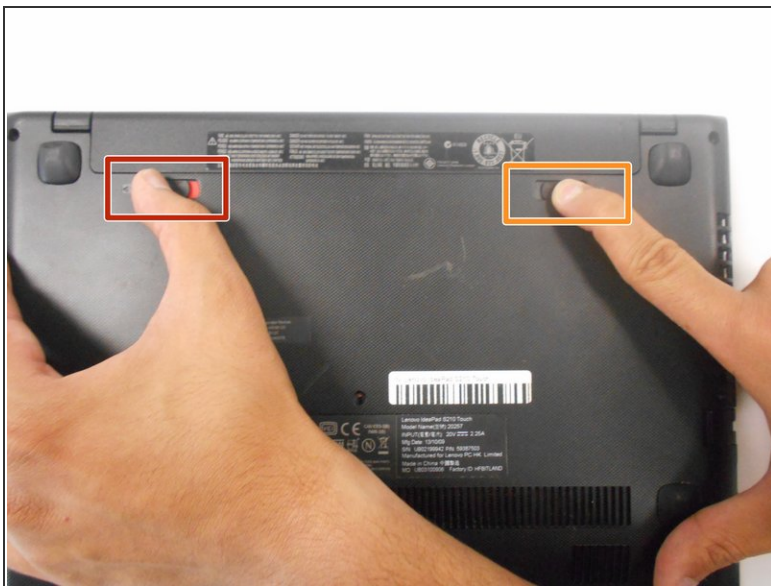
Step 1 — Battery



⚠ Ensure your device is **unplugged** and **shut down**.

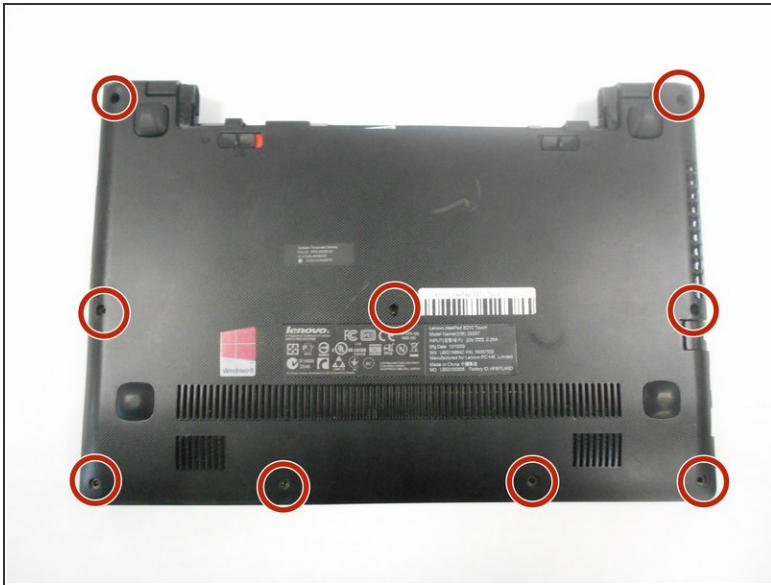
- Place the laptop down with the cooling vents facing upwards.

Step 2



- Use your finger to slide the latch towards the unlocked position (away from the other latch). If done correctly you will see red.
- Slide the second latch to the unlocked position while gently pulling the battery away from the laptop.

Step 3 — Back Panel



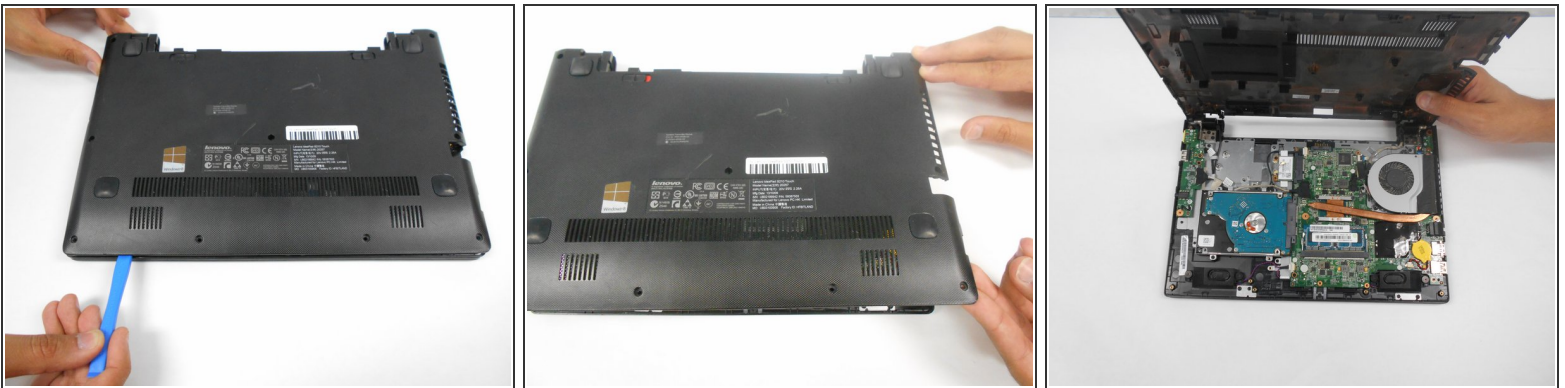
- Using the #0 Phillips screwdriver, remove the nine 4mm screws on the back panel.

Step 4



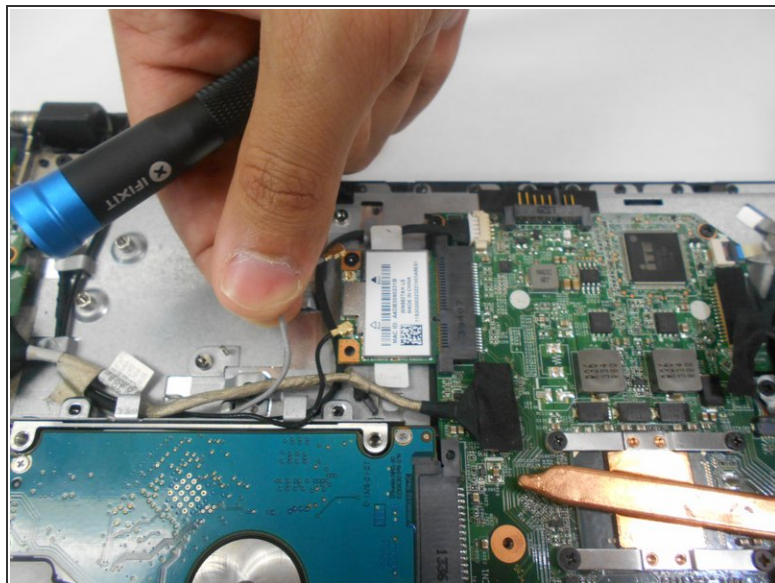
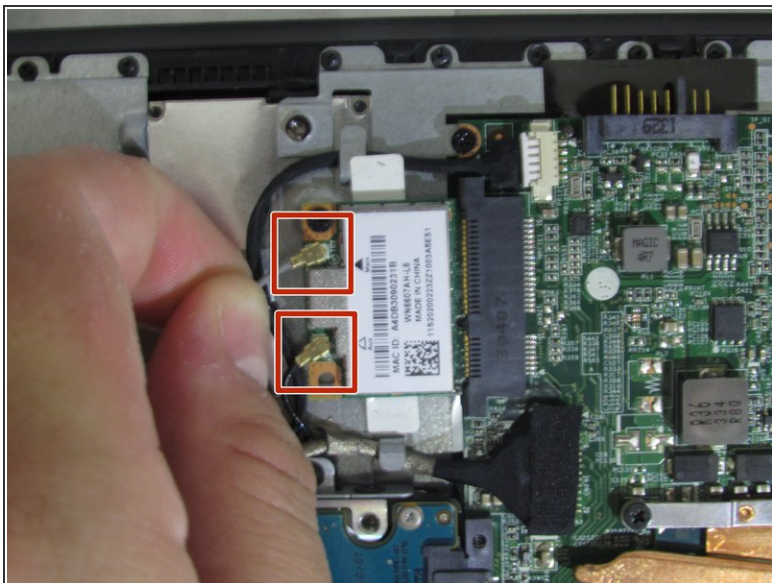
- Gently pull the two rubber feet closest to battery away from the device. Using a #0 Phillips screwdriver, remove the 5mm screw under each rubber foot.

Step 5



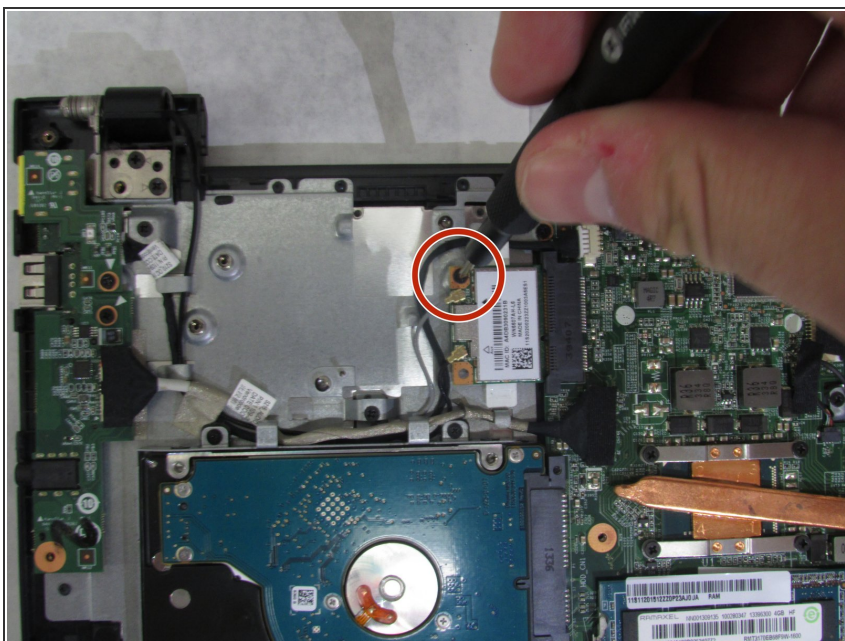
- Slowly begin working your plastic opening tool along the panel to undo the latches around the laptop.

Step 6 — Wi-Fi Network Card



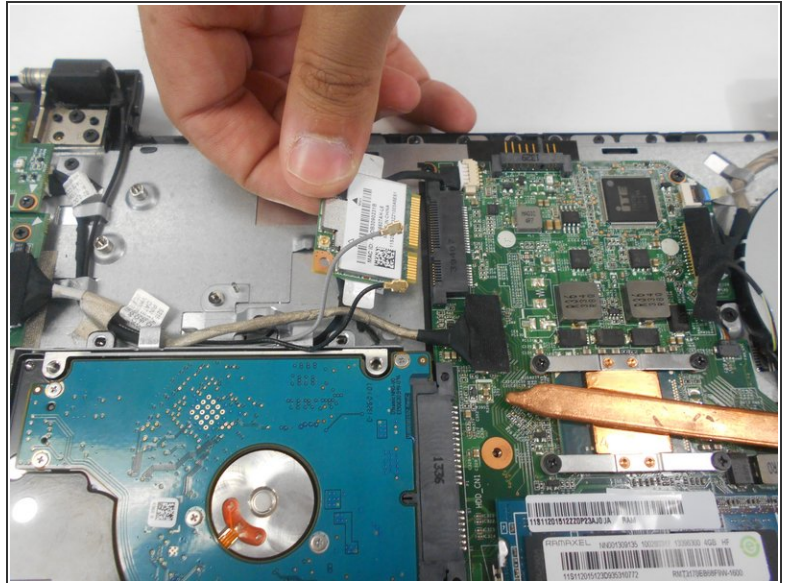
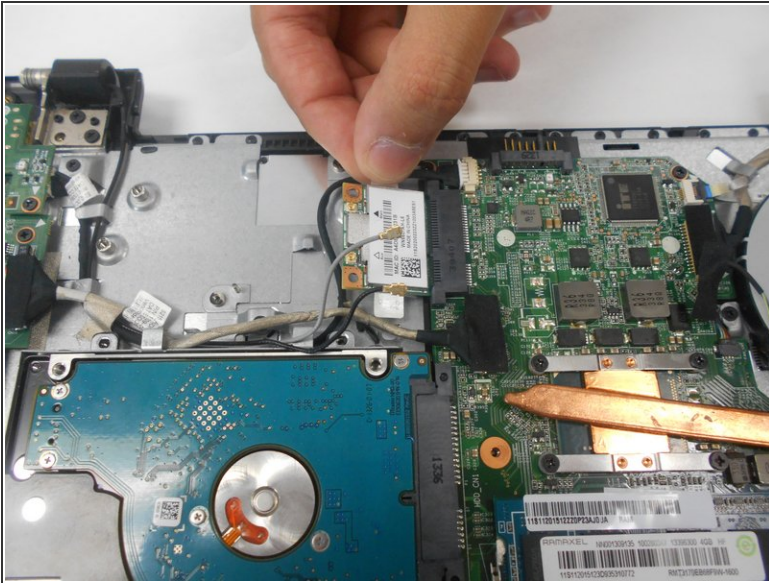
- Remove both antenna wires by pulling upwards gently.

Step 7



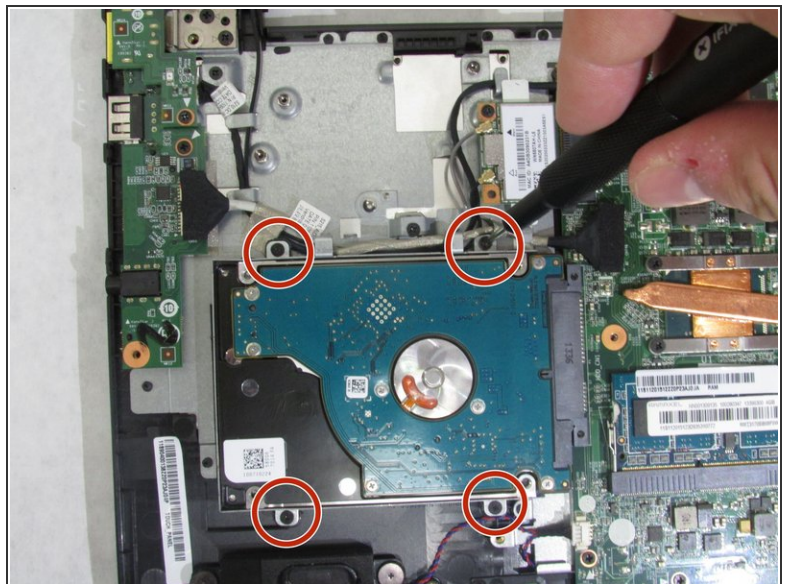
- Using the #00 Phillips screwdriver, remove one 3mm screw from the network card.

Step 8



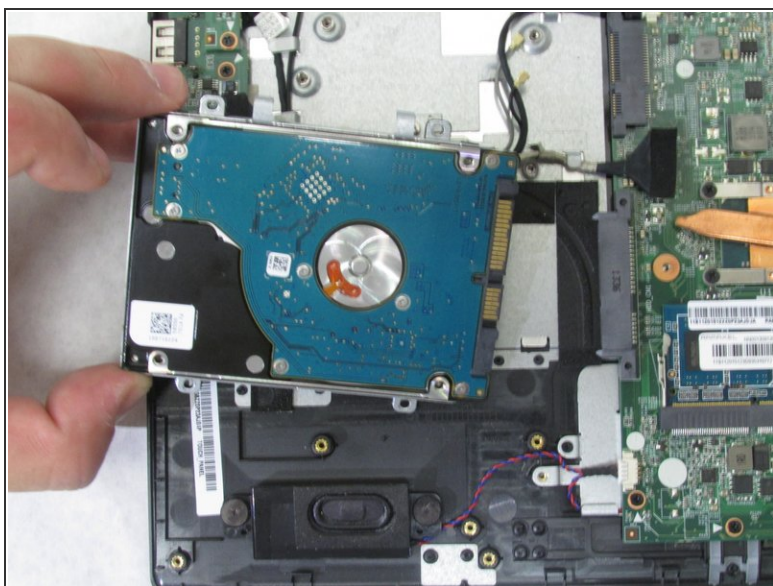
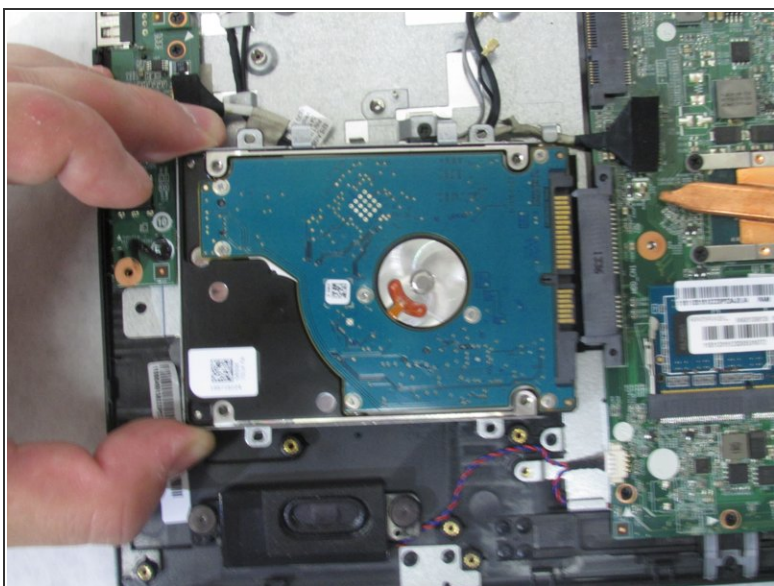
- Slide Wi-Fi network card away from motherboard and remove gently.

Step 9 — Hard Drive



- Using a #0 Phillips screwdriver, remove the four 4mm screws that secure the hard drive bracket to the motherboard.

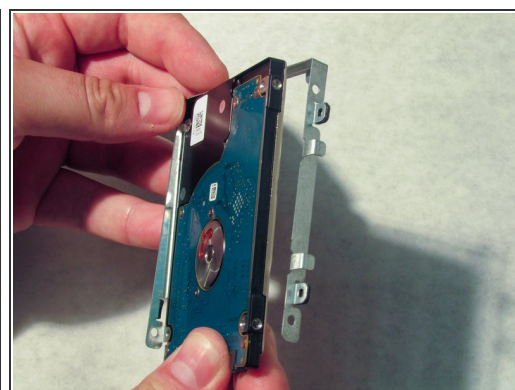
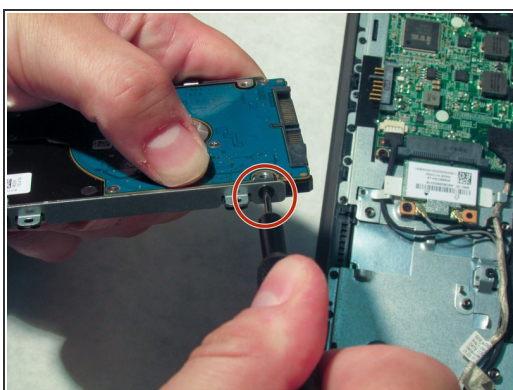
Step 10



- Slide your hard drive away from your motherboard until fully removed.

⚠ Be careful not to snag any wires routed along the battery side of the hard drive.

Step 11

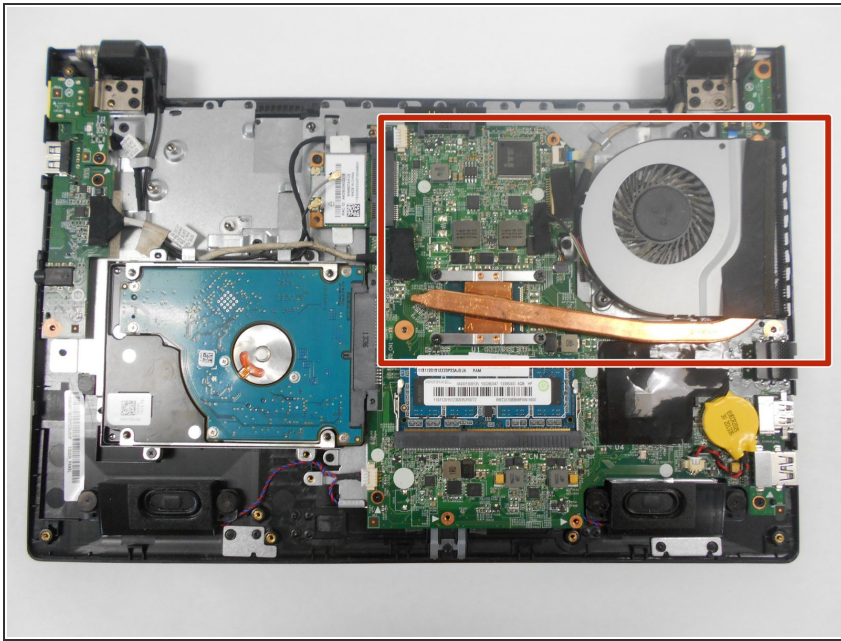


i This step is only necessary if you are swapping your old hard drive for a new one.

- Using a Phillips #0 screwdriver, remove four 2.5mm screws, two per side, to release the hard drive from its mounting bracket. These screws are directly next to each mounting screw you removed previously.

★ Install the mounting brackets onto the new hard drive during reassembly.

Step 12 — Cooling Fan



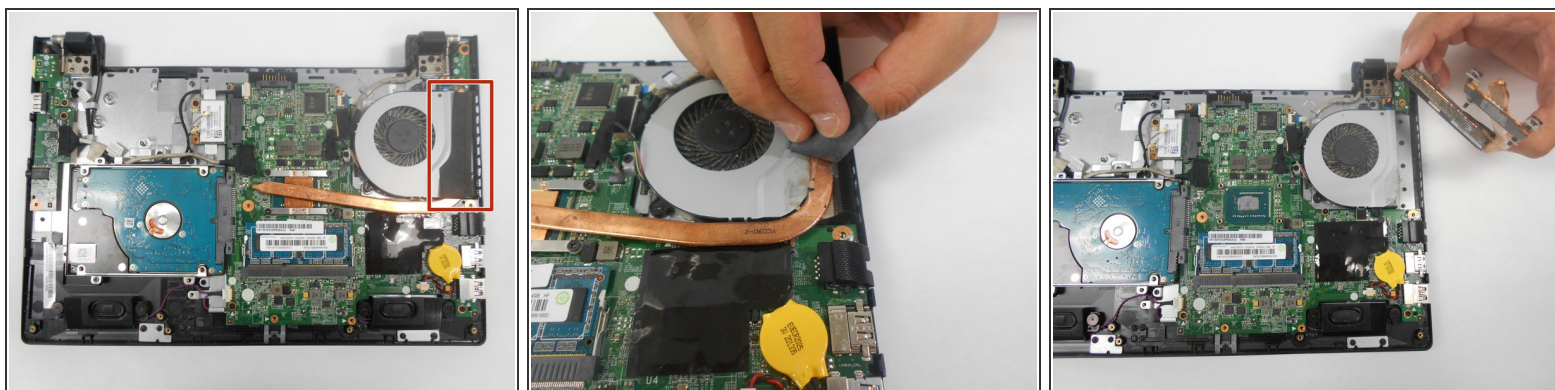
- i Many of the wire connections to the motherboard are secured by tape for vibration protection. Your device may or may not have this tape.
- If any tape is present, remove all tape from the area within the red area.

Step 13



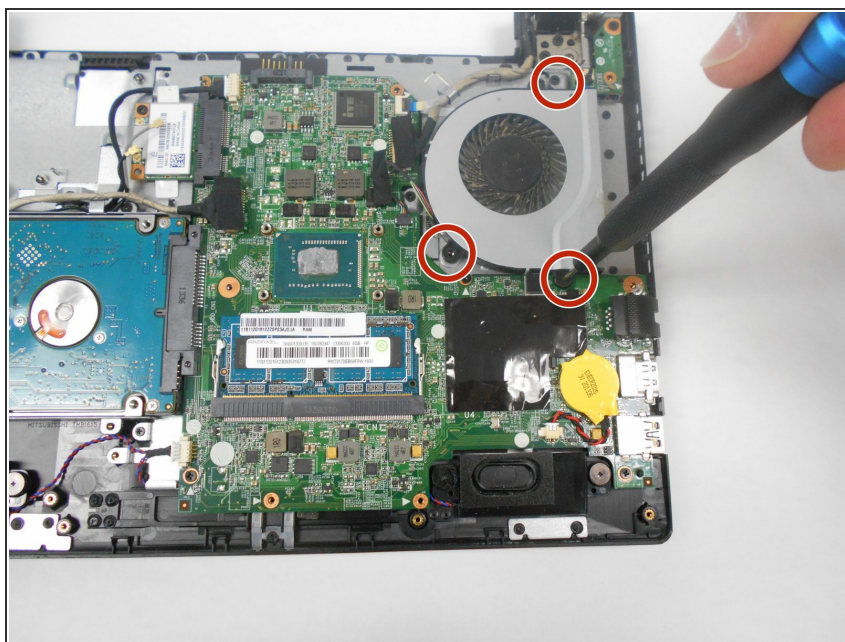
- Using a #0 Phillips screwdriver, unscrew the four 3mm captive screws securing the copper tube onto the motherboard.
- i These captive screws are secured by plastic washer to the copper tube and will remain in the heat sink assembly during removal.

Step 14



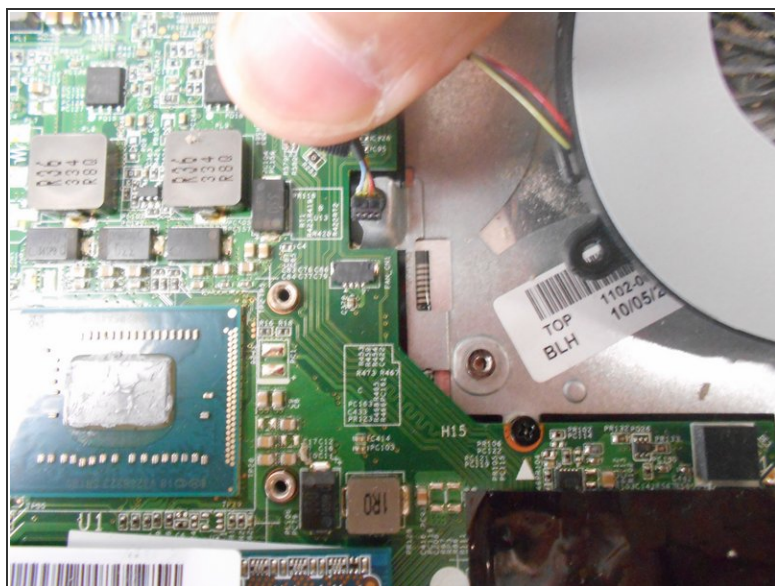
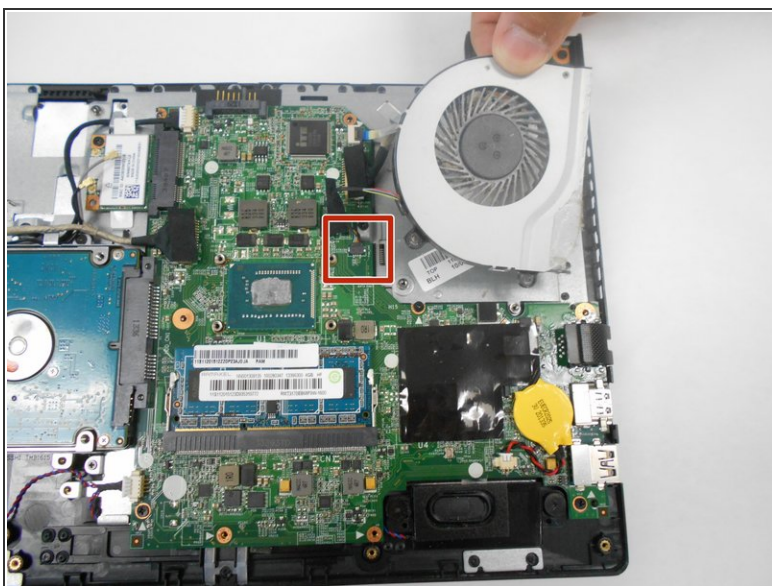
- Remove the tape connecting the copper tubing to the cooling fan.
- Lift and remove the heat sink assembly.

Step 15



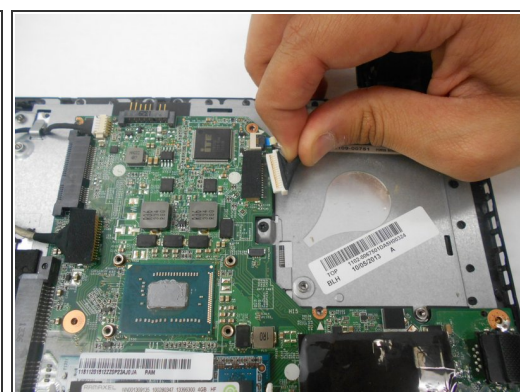
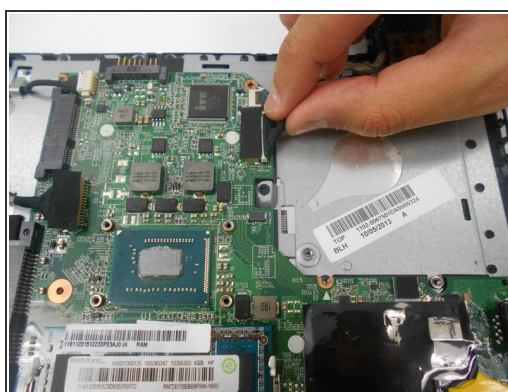
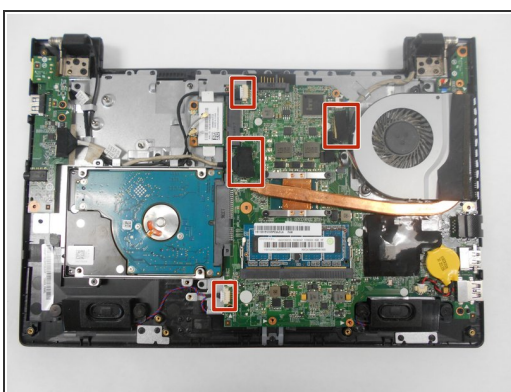
- Using a #0 Phillips screwdriver, remove the three 3mm screws around the perimeter of the fan.

Step 16



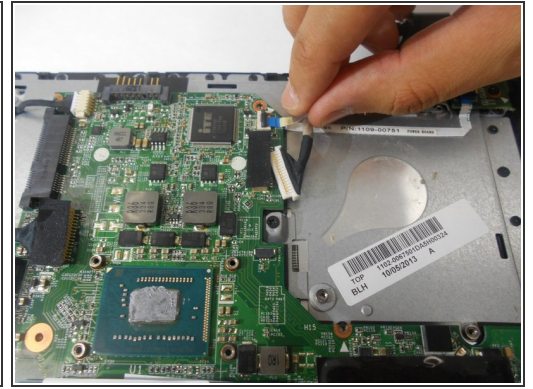
- Remove the wiring from the motherboard by gently pulling the wire connector at the base of the wires.
- Once the wires are removed, the cooling fan assembly is disconnected. You may now remove the cooling fan.

Step 17 — Motherboard



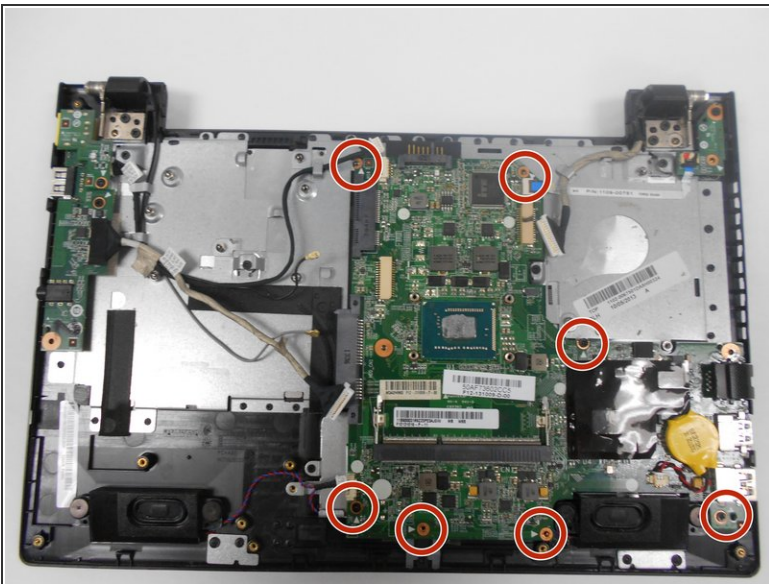
- ⓘ Your device may or may not have tape securing wired connections. If it is present, it must be removed before disconnecting cabling.
- Remove four cables connected to motherboard by pulling gently on connector at base of cables.

Step 18



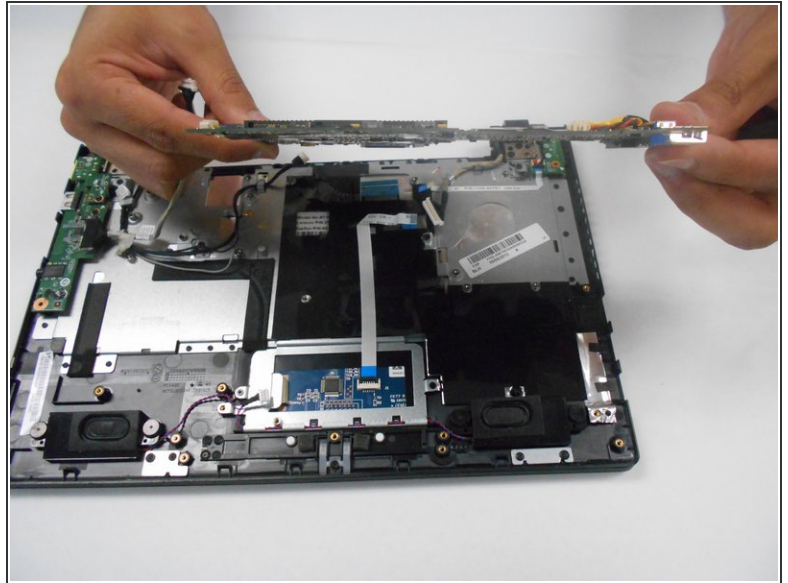
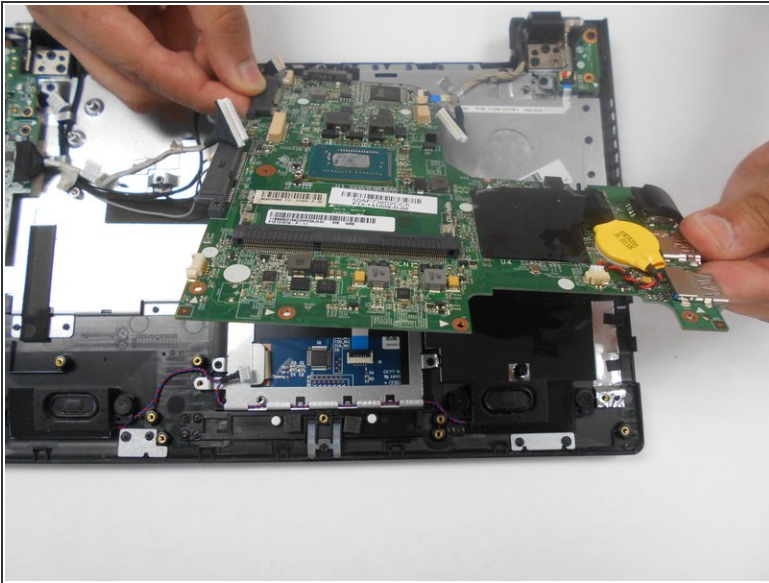
- Use a spudger to lift the connector lock to the small ribbon cable attached near where the cooling fan was located.
- After unlocking the connector, gently pull the removal tab on the ribbon cable to remove completely.

Step 19



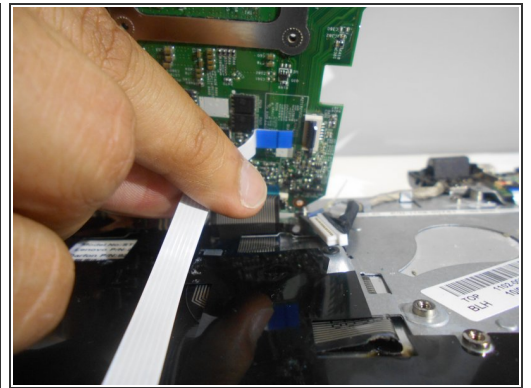
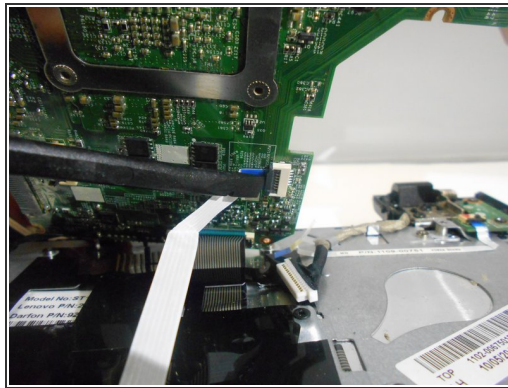
- Using a #0 Phillips screwdriver, remove the seven 3mm screws securing the motherboard to the chassis.

Step 20



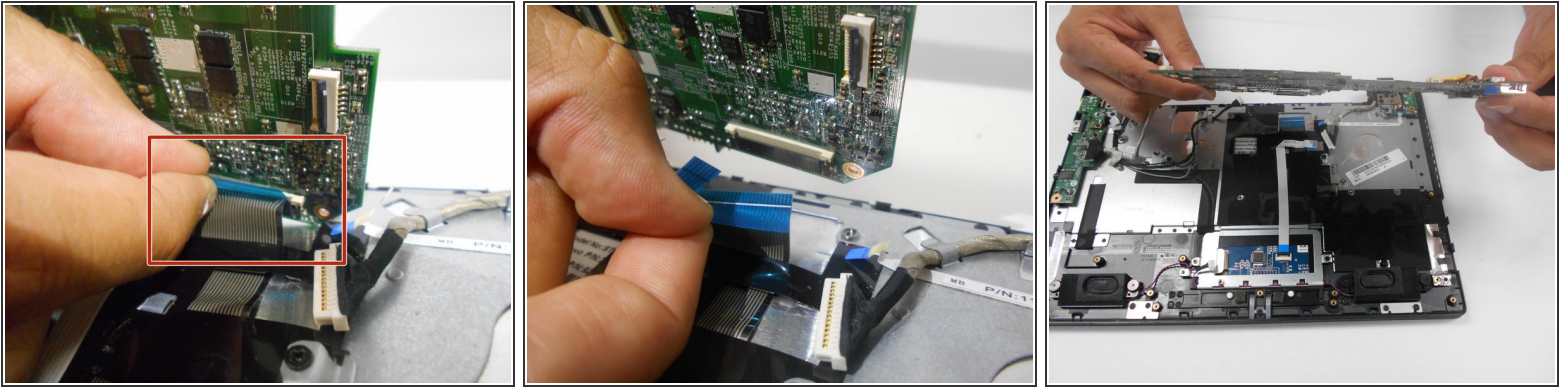
- Slowly tilt the motherboard forward so you can access the bottom.

Step 21



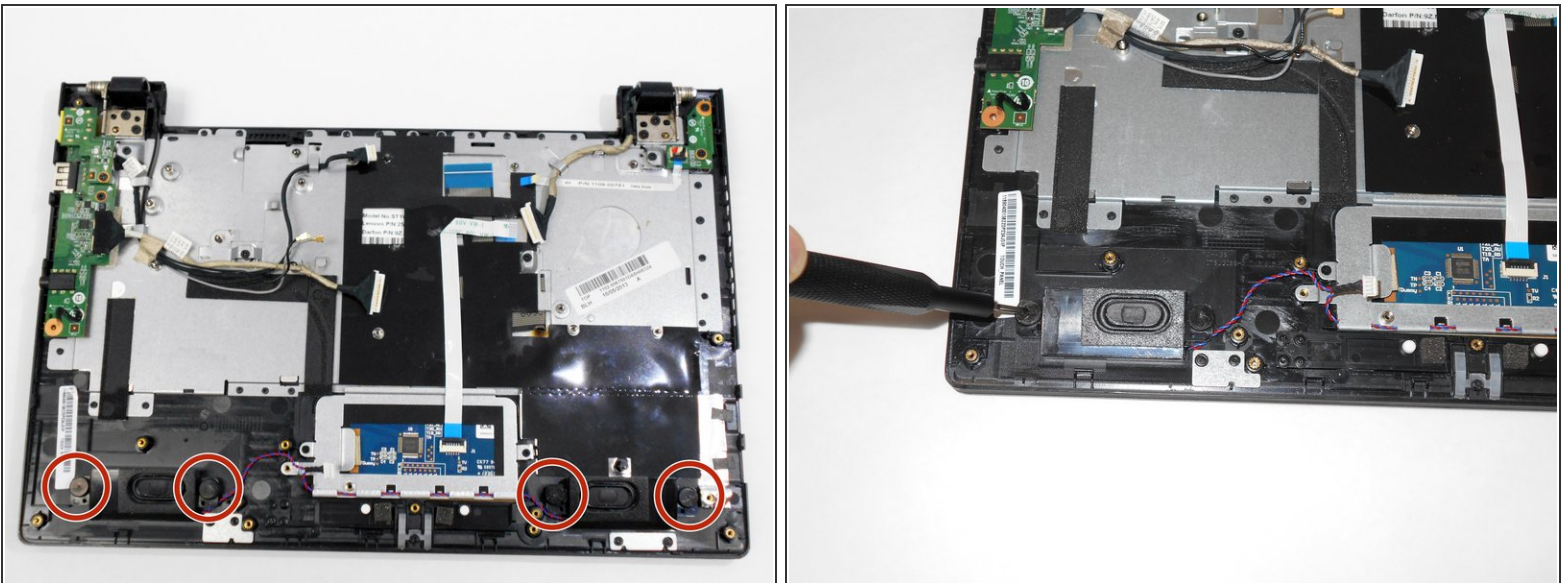
- Using a spudger, remove the smaller of the two ribbon cables by lifting on the black connector.
- Once connector is lifted, gently pull on the ribbon cable to remove it.

Step 22



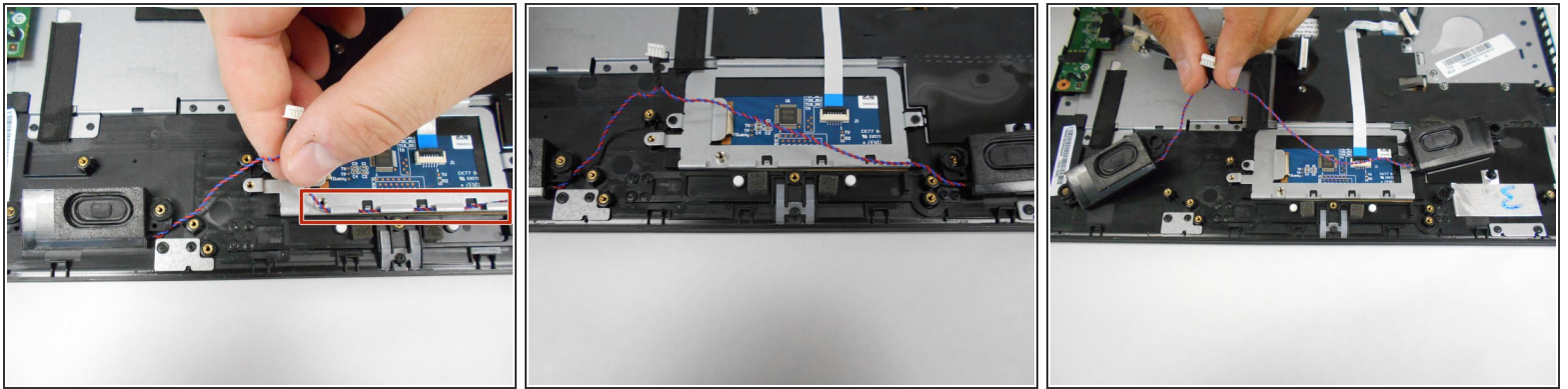
- Remove the second (and last) ribbon cable from the motherboard by gently pulling on the blue pull tab.
- Lift and remove motherboard from laptop chassis.

Step 23 — Speaker



- Using a #00 Phillips screwdriver, remove four 1mm screws from the two speakers.

Step 24



- Separate the wires from the chassis and lift to remove the speakers.

To reassemble your device, follow these instructions in reverse order.