



# Lenovo IdeaPad S210 Touch Wi-Fi Network Card Replacement

This guide will show you how to replace your Wi-Fi Network Card.

Written By: Zack Colman



## INTRODUCTION

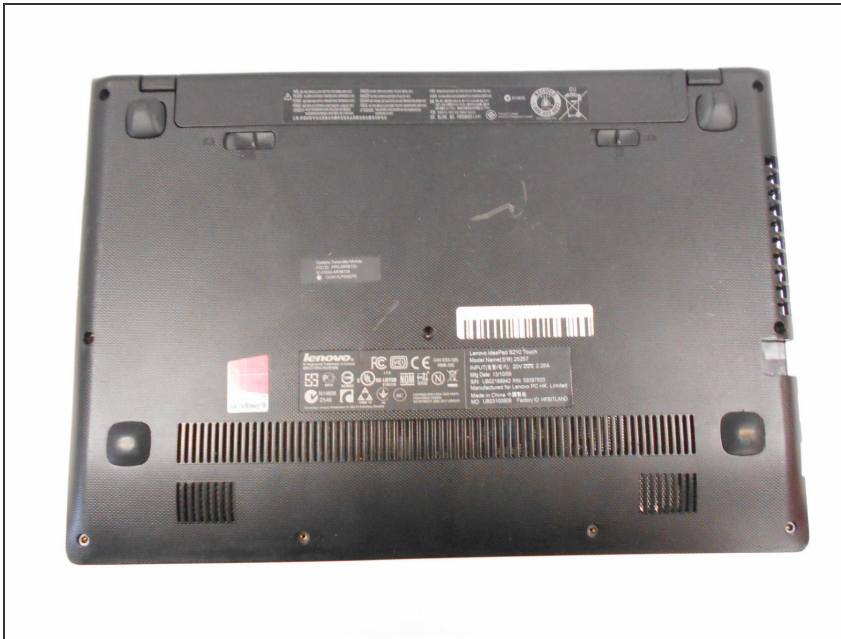
Replacing the Wi-Fi card may fix dropping Wi-Fi connections. Replacement may be necessary to regain complete Wi-Fi functionality.

---

### TOOLS:

- [iFixit Opening Tools](#) (1)
  - [Phillips #0 Screwdriver](#) (1)
  - [Phillips #00 Screwdriver](#) (1)
-

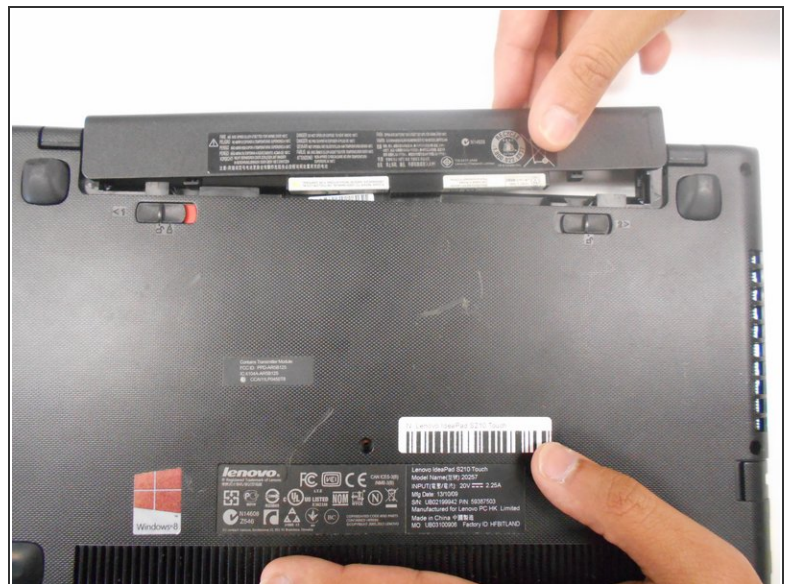
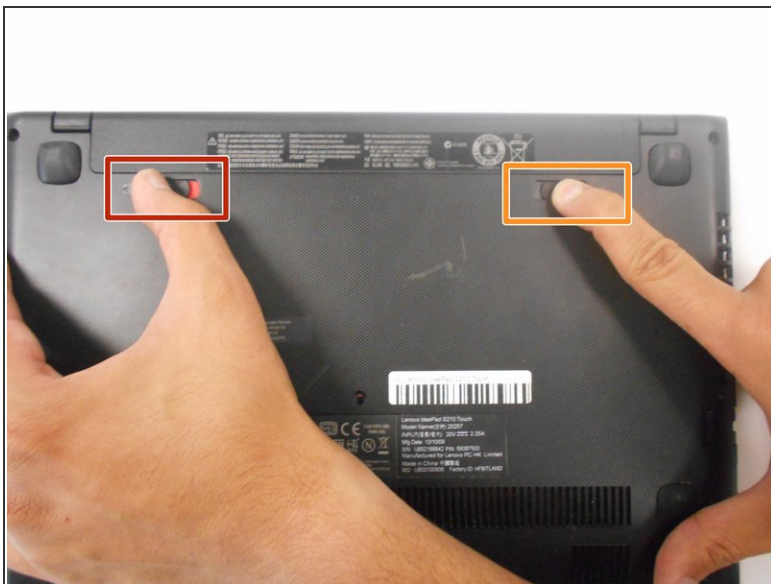
## Step 1 — Battery



⚠ Ensure your device is **unplugged** and **shut down**.

- Place the laptop down with the cooling vents facing upwards.

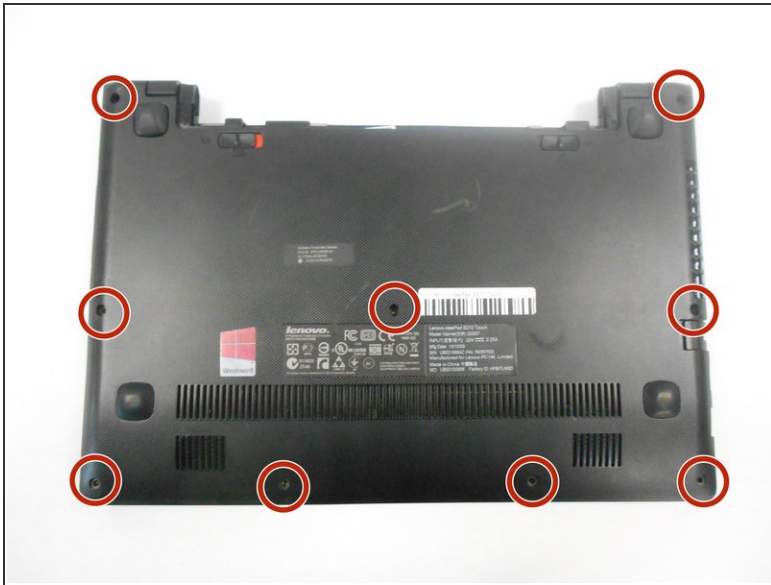
## Step 2



- Use your finger to slide the latch towards the unlocked position (away from the other latch). If done correctly you will see red.
- Slide the second latch to the unlocked position while gently pulling the battery away from the laptop.



## Step 3 — Back Panel



- Using the #0 Phillips screwdriver, remove the nine 4mm screws on the back panel.

## Step 4



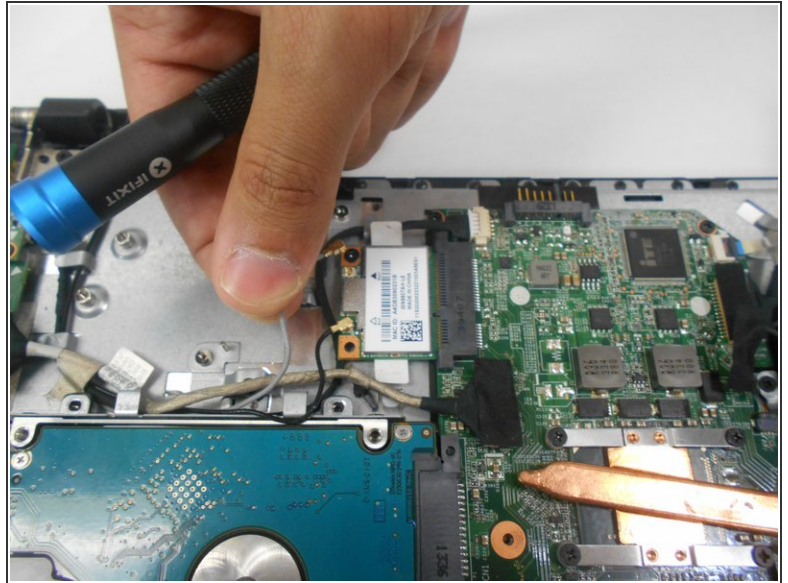
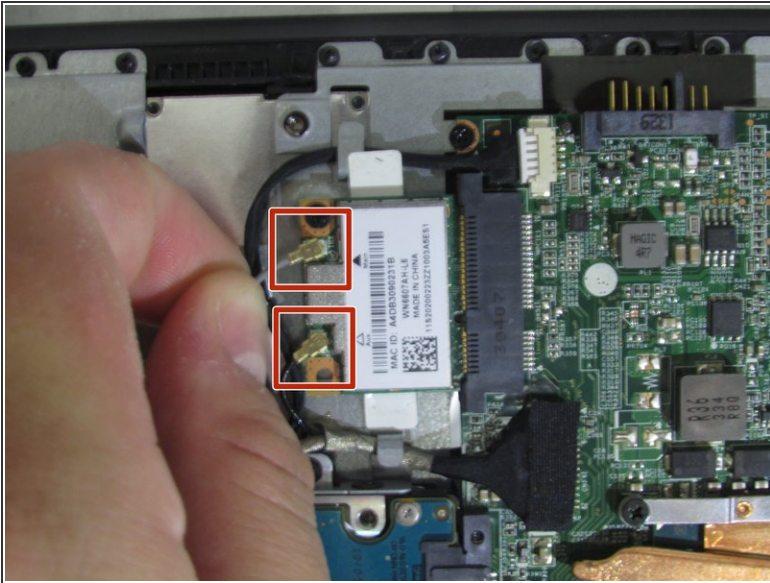
- Gently pull the two rubber feet closest to battery away from the device. Using a #0 Phillips screwdriver, remove the 5mm screw under each rubber foot.

## Step 5



- Slowly begin working your plastic opening tool along the panel to undo the latches around the laptop.

## Step 6 — Wi-Fi Network Card



- Remove both antenna wires by pulling upwards gently.

## Step 7



- Using the #00 Phillips screwdriver, remove one 3mm screw from the network card.



## Step 8



- Slide Wi-Fi network card away from motherboard and remove gently.

To reassemble your device, follow these instructions in reverse order.