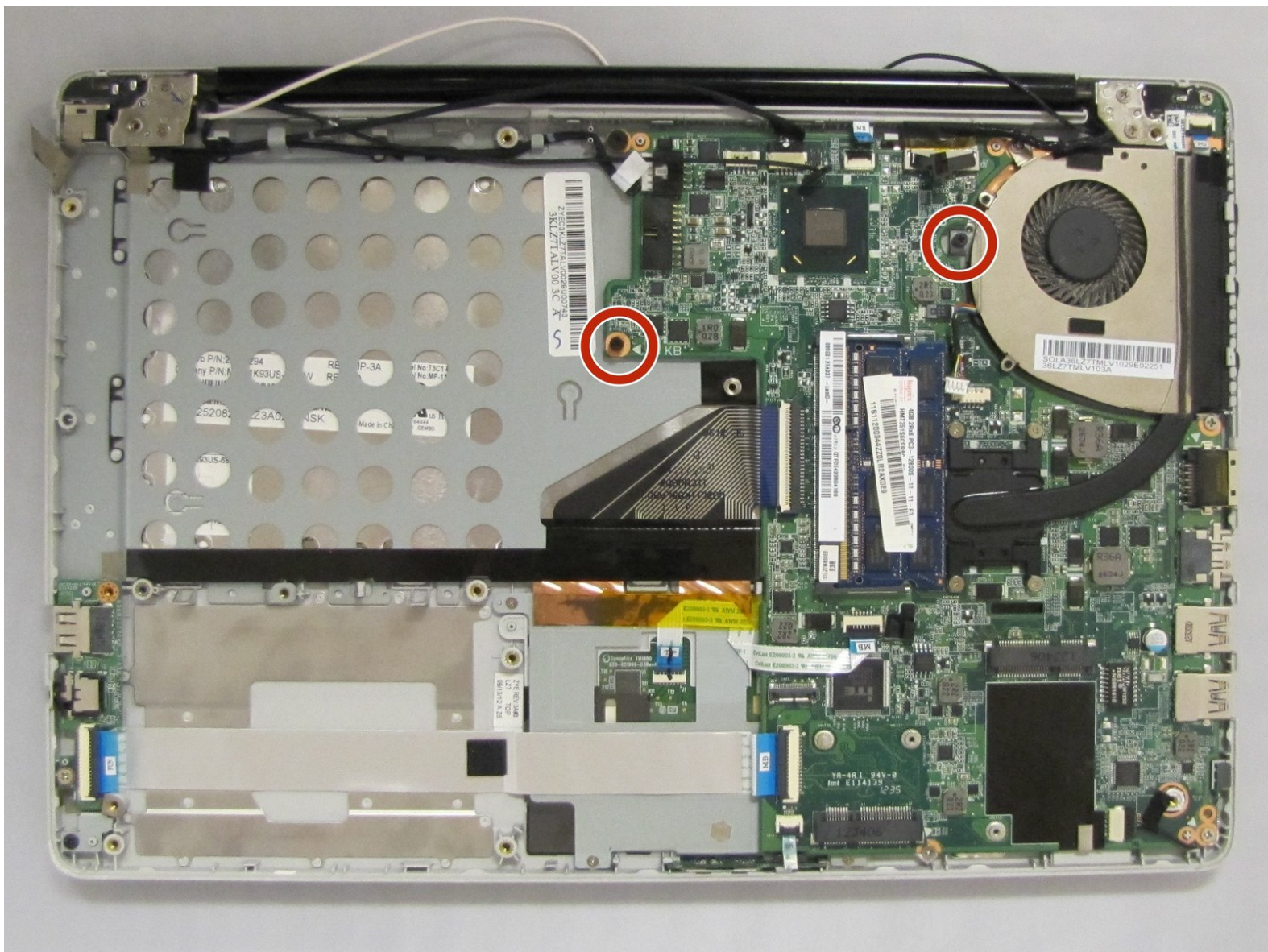




Lenovo IdeaPad U310 Keyboard Replacement

Step by step instructions on how to replace your keyboard.

Written By: Andrew Capra



INTRODUCTION

Replacing the keyboard on your Lenovo IdeaPad U310 could seem tricky at first. Be sure not to apply too much pressure to the keyboard for this might damage the plastic casing, and use the proper opening tools.



TOOLS:

- [iFixit Opening Tools](#) (1)
 - [Phillips #1 Screwdriver](#) (1)
 - [iFixit Opening Picks set of 6](#) (1)
-

Step 1 — Battery



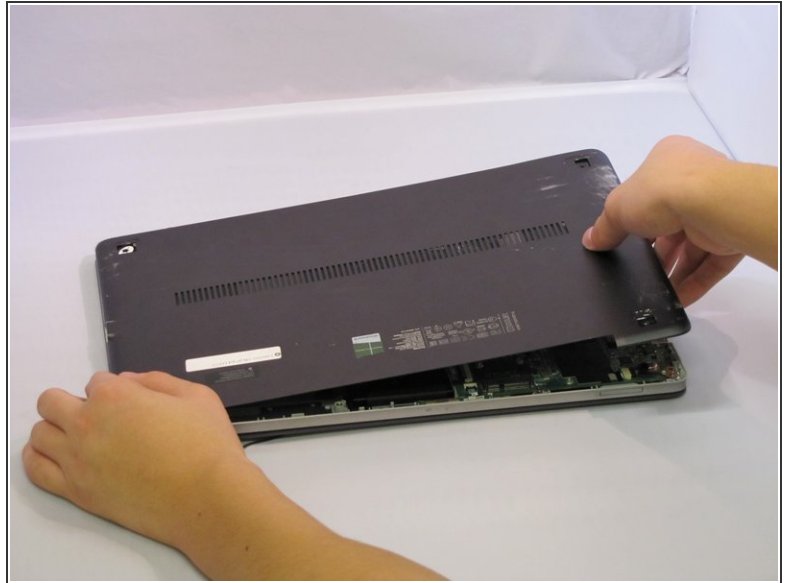
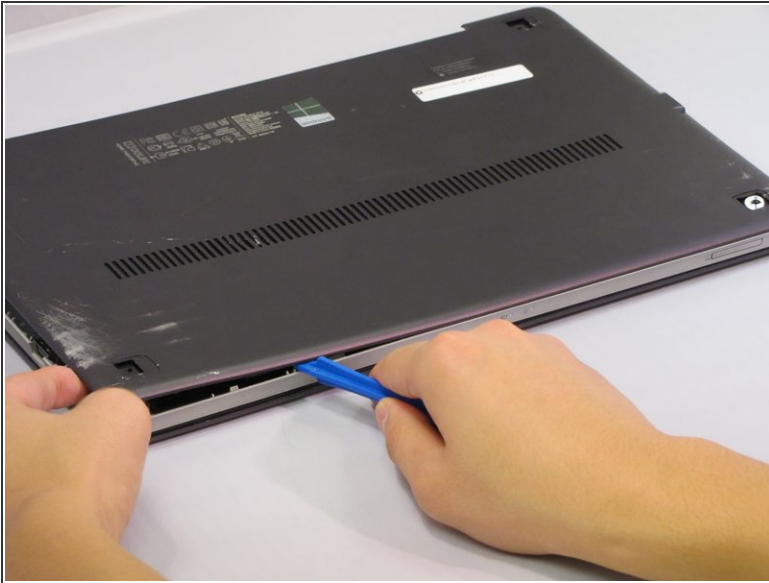
- Flip the device over so the bottom panel is facing up.
- Remove the rubber feet by pinching and pulling in an upward motion.
- ⓘ The rubber feet are missing from this photo, but will be located within the red markups.

Step 2



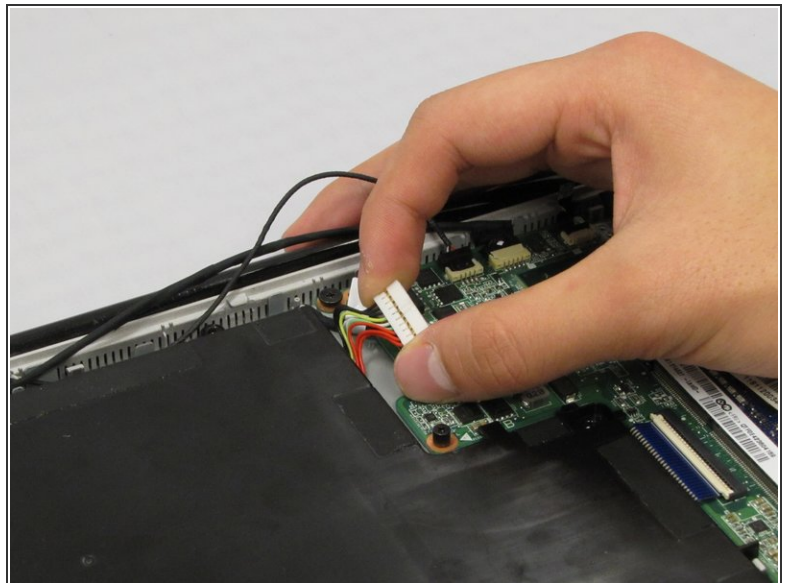
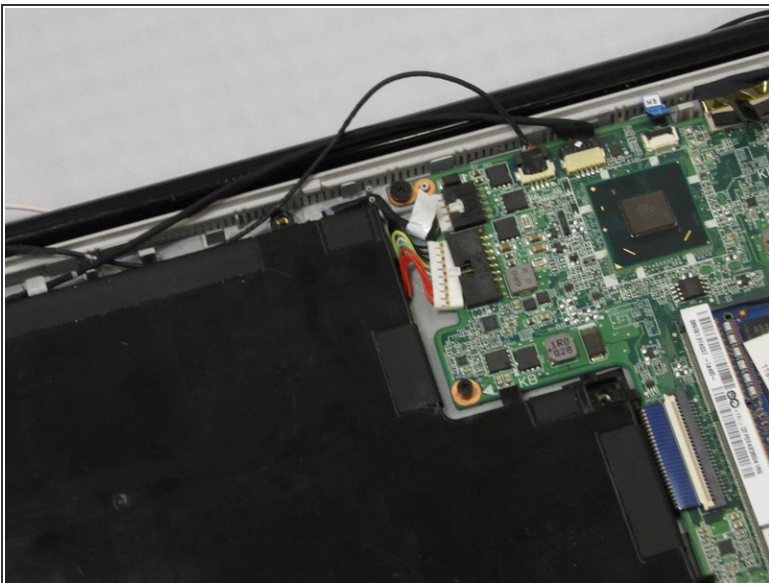
- Remove the 4 screws securing the bottom panel to the device.
- ⓘ The screws are missing from this device and are not pictured. They will be located under the rubber feet within the red markups.

Step 3



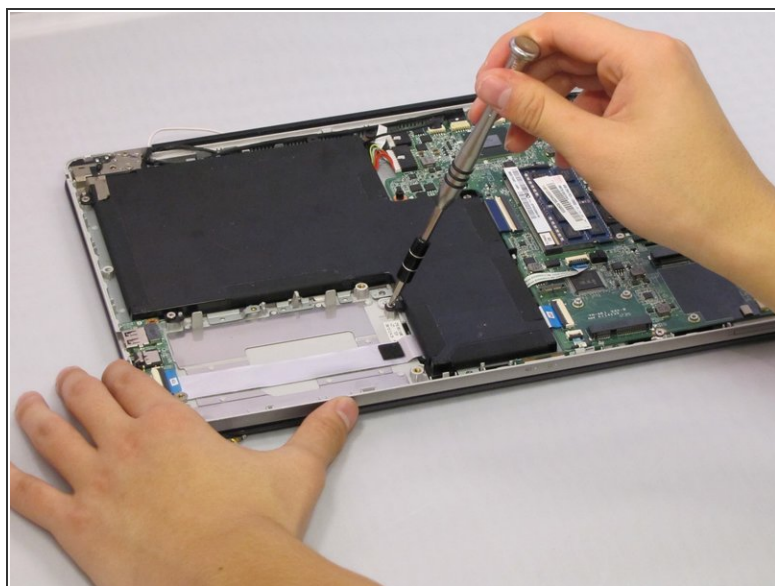
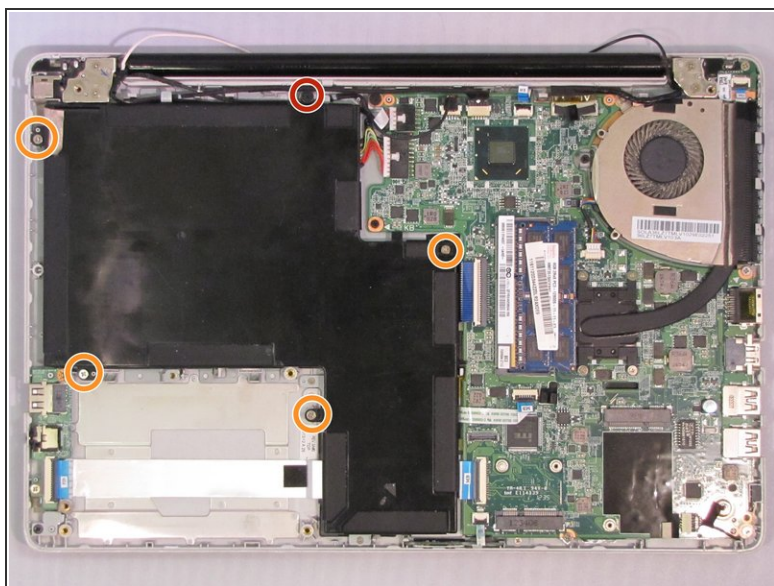
- Place the plastic opening tool between the bottom panel and device.
- Pry around the device's outer edge until the bottom panel is no longer attached.
- Lift the bottom panel up and away from device.

Step 4



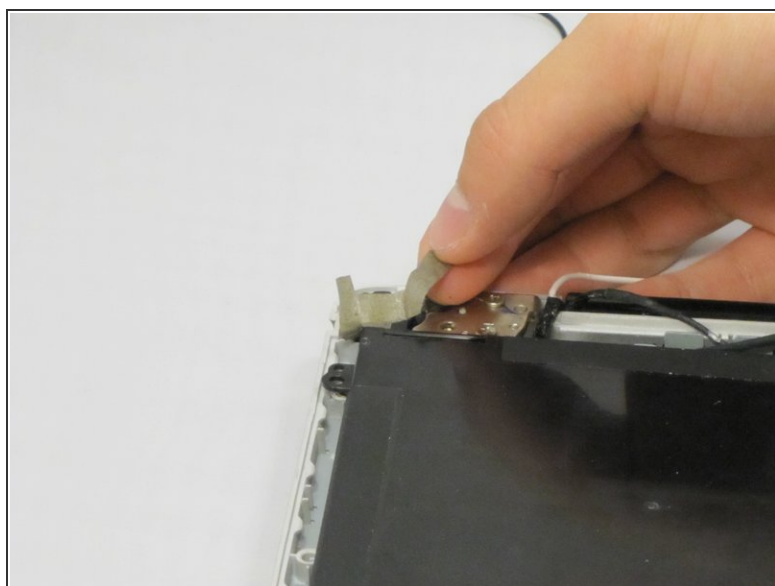
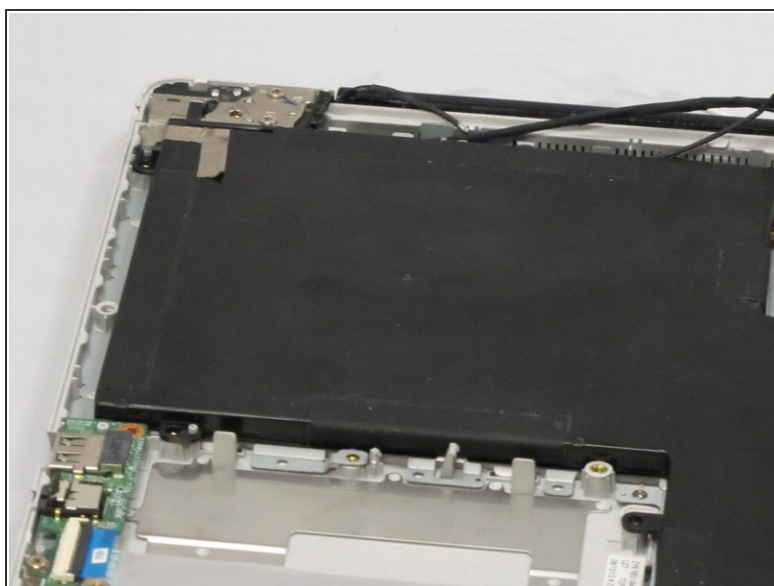
- Unplug the Battery from the circuit board by carefully prying the connector from its housing.

Step 5



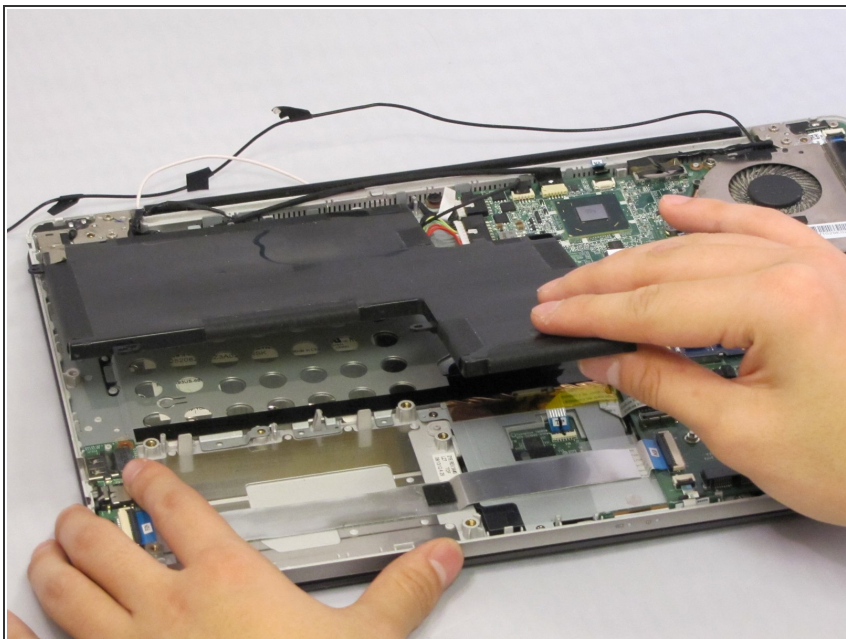
- Remove the 5.6 mm Screw with the PH1 screwdriver.
- Remove the 4.6 mm screws with the PH1 screwdriver.

Step 6



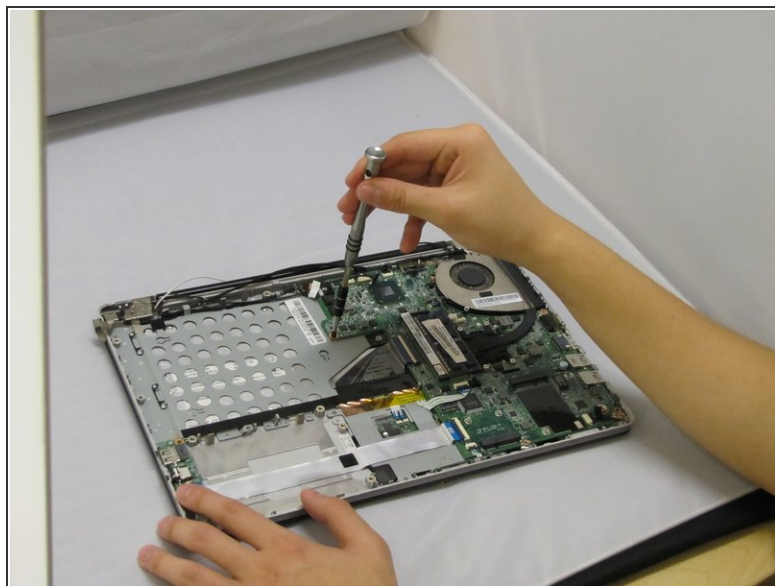
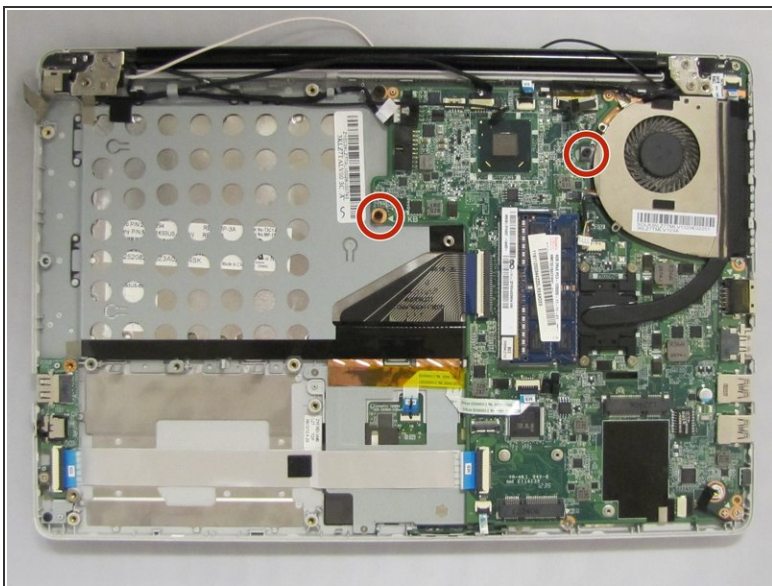
- Lift the strip tape away from the battery, being careful not to completely remove it.

Step 7



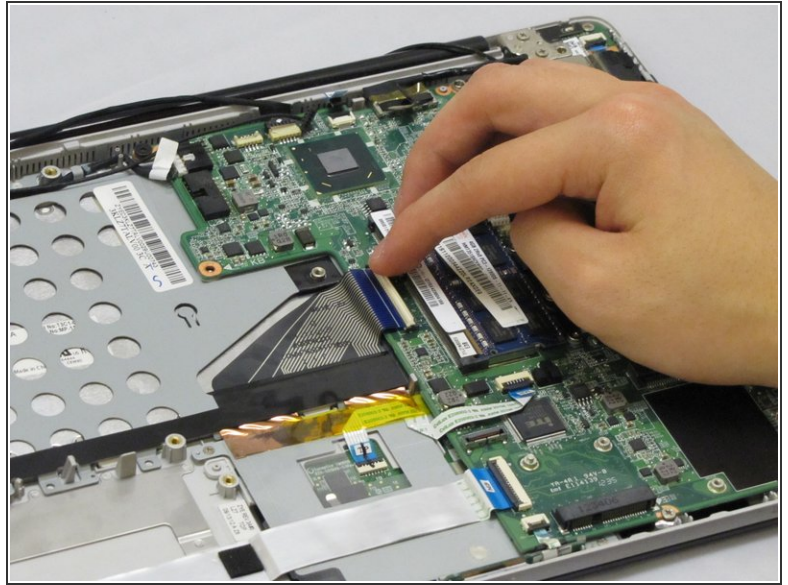
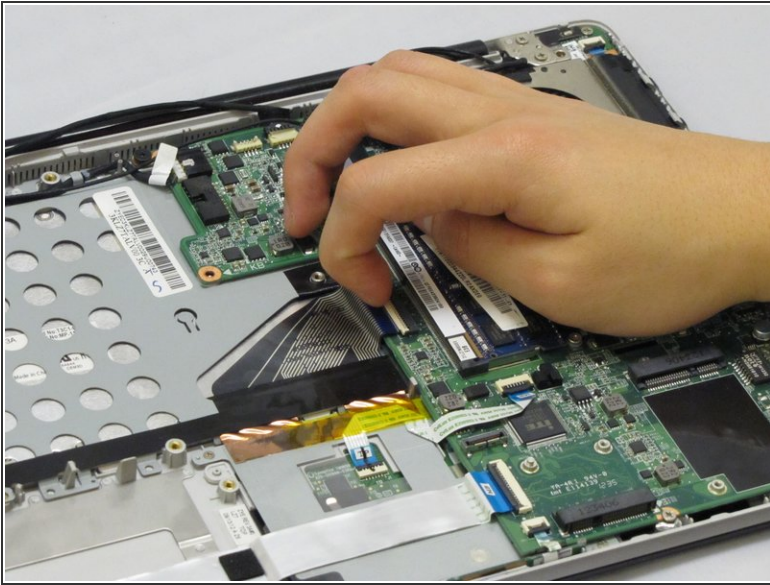
- Remove the battery by lifting up and away from device.

Step 8 — Keyboard



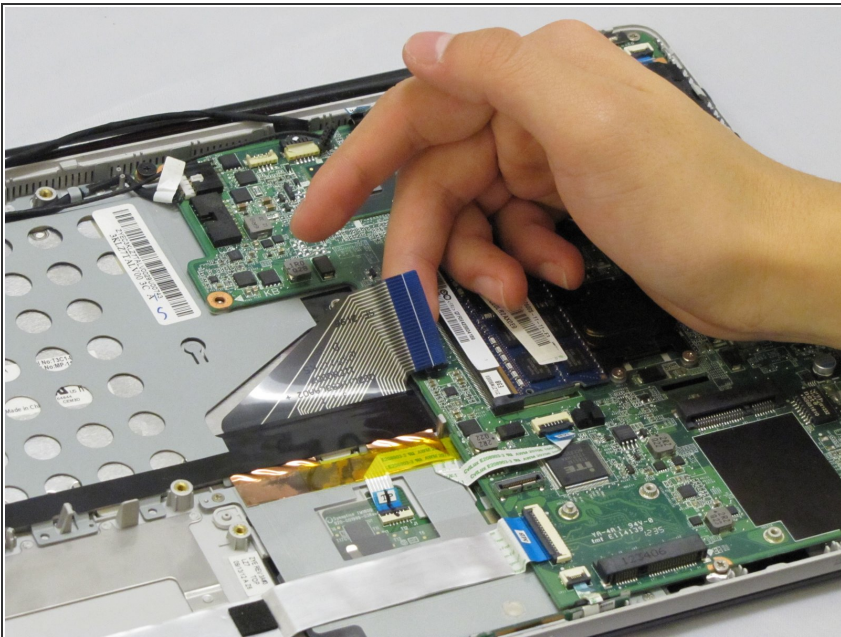
- Remove the two 4.6 mm screws using PH1.
- One is located next to the fan, the other at the corner of the battery.

Step 9



- Pry up the hinge that houses the keyboard's ribbon cable.

Step 10



- Remove the ribbon from its housing.

Step 11



- Turn laptop upside down so the keyboard is facing up.
 - Place prying tool between the keyboard and the housing.
 - Move the prying tool around the keyboard's edge, releasing the tabs securing the keyboard.
- i** There are larger tabs that cannot be pried at the bottom of the keyboard.

Step 12



- Lift the keyboard up and away from the device.

To reassemble your device, follow these instructions in reverse order.