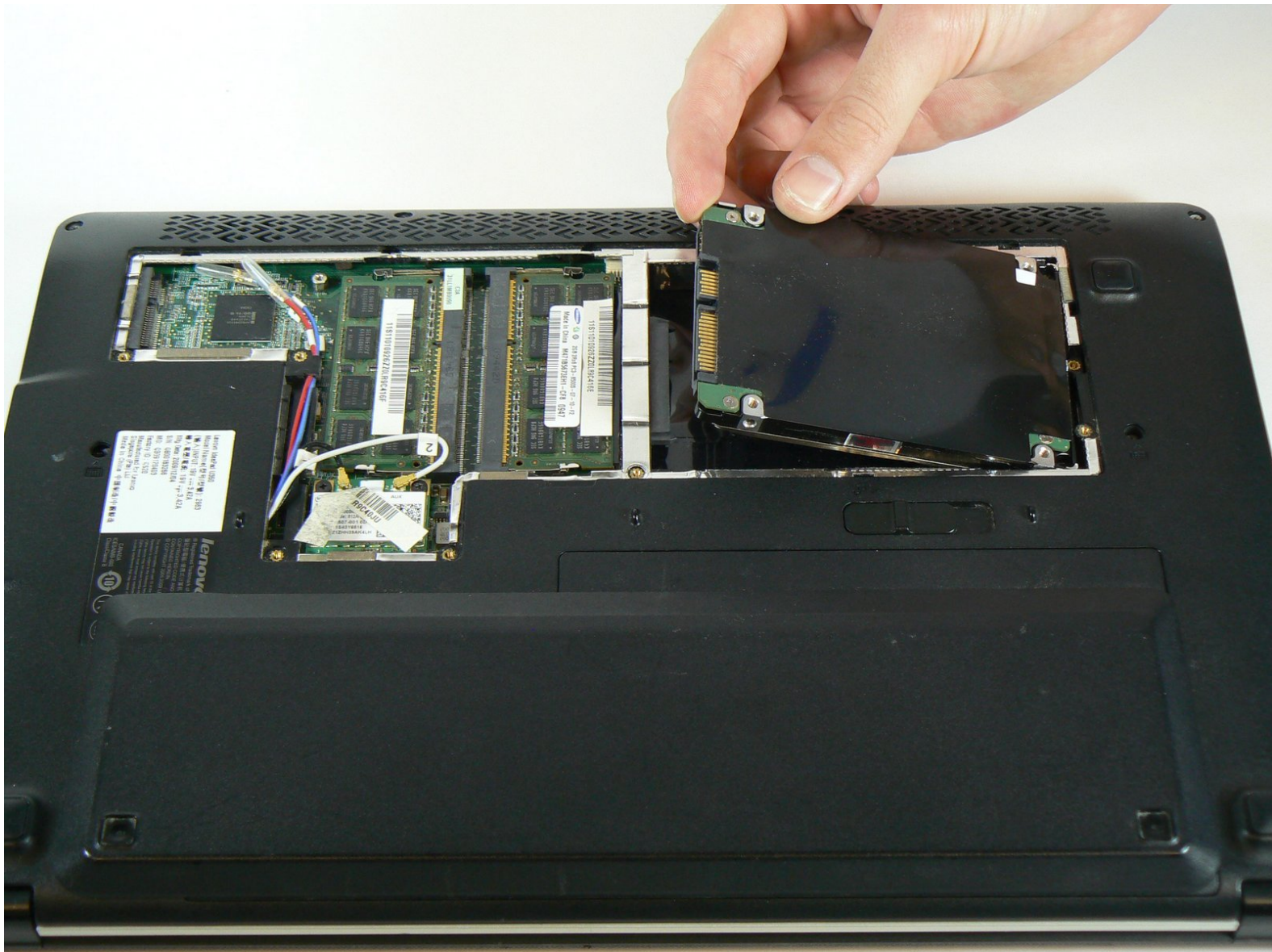




# Lenovo IdeaPad U350 Hard Drive Replacement

A quick and easy guide to replacing your hard drive.

Written By: James Morizzo



## INTRODUCTION

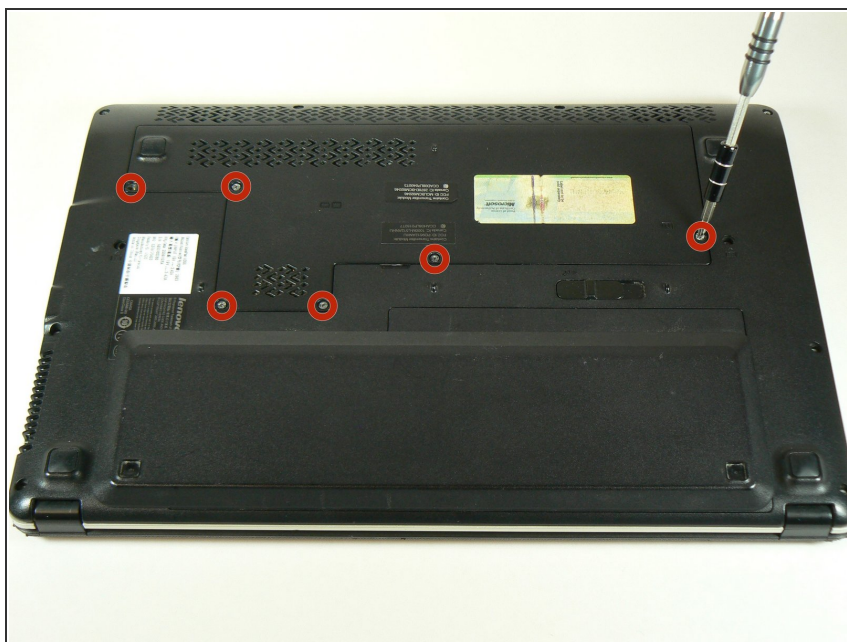
The hard disk drive is the data storage device for your computer. If it breaks, you may choose to replace it with either another 2.5" SATA hard drive or an SSD. An SSD does not have any moving parts, is more resistant to shock, has faster read and write speeds, and runs quieter than a hard disk drive. However, SSDs are also more expensive.



### TOOLS:

- [Phillips #1 Screwdriver](#) (1)
-

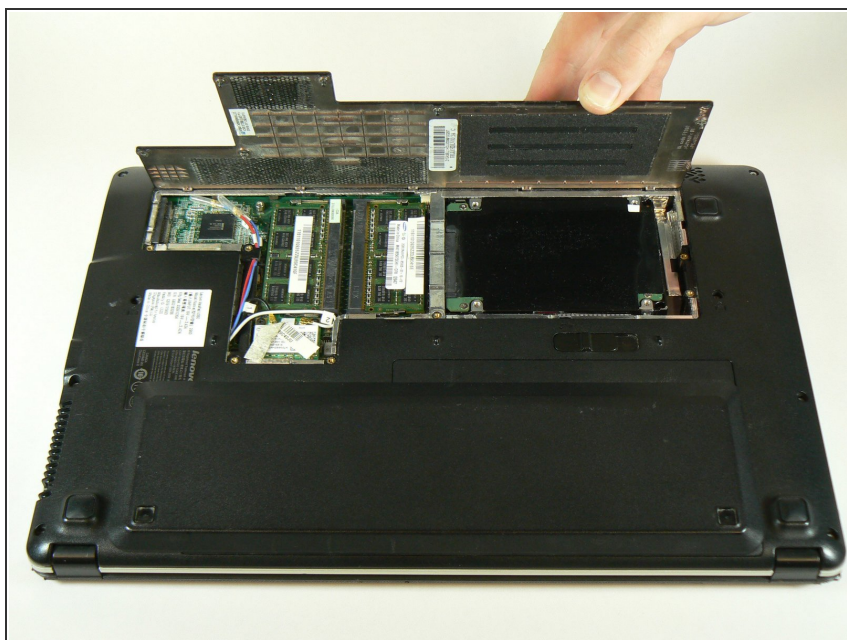
## Step 1 — Hard Drive



- Unscrew the six screws on the back panel of the laptop using a PH1 Phillips bit.

⚠ These screws are attached to the panel. When unscrewing, be sure to stop when you hear a click.

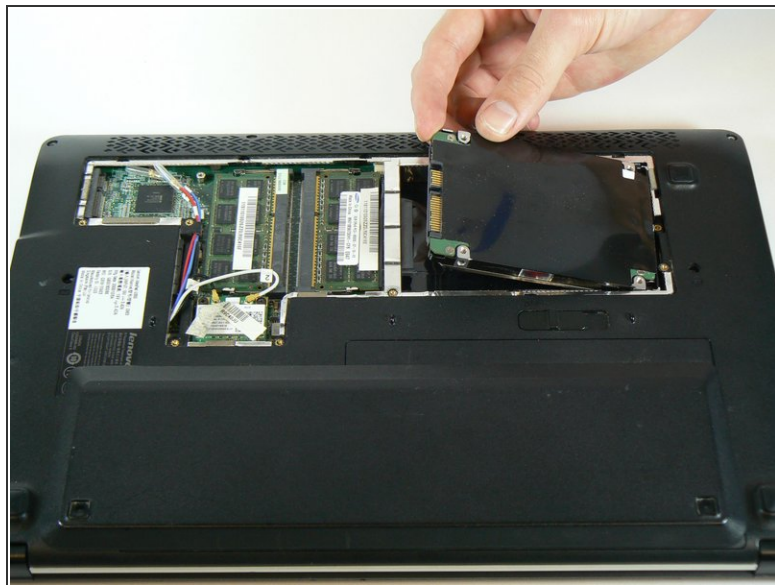
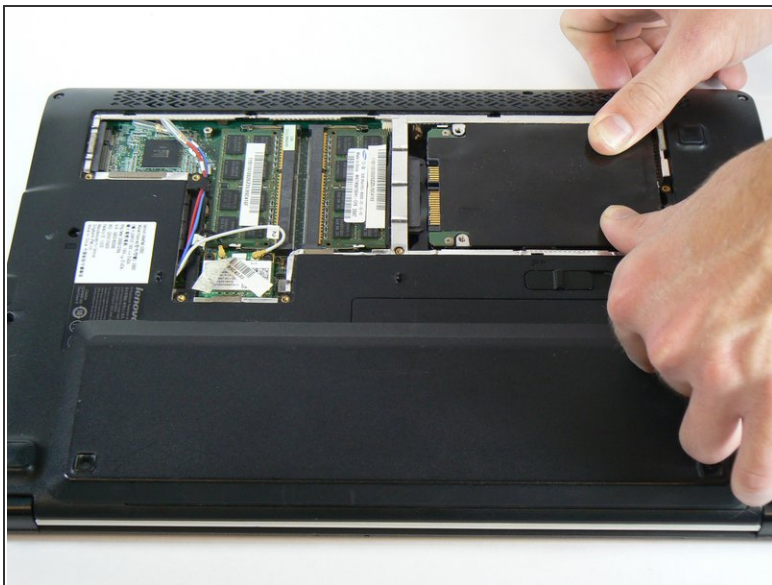
## Step 2



- Lift the back panel from the side closest to the battery and remove the panel.



## Step 3



- Slide the hard drive to the right, away from the RAM modules.
- Lift the hard drive from the side closest to the RAM modules.
- ☑ When re-inserting the hard drive, ensure that the copper contacts on the drive's connector are facing upwards.

To reassemble your device, follow these instructions in reverse order.