



Lenovo IdeaPad U530 Touch Network Adapter Replacement

The network adapter connects your device to the internet through LAN or WiFi connections.

Written By: Rebekah Harmon



INTRODUCTION

The network adapter is attached to the motherboard on this device. The back panel of the device must be removed to reach the adapter.



TOOLS:

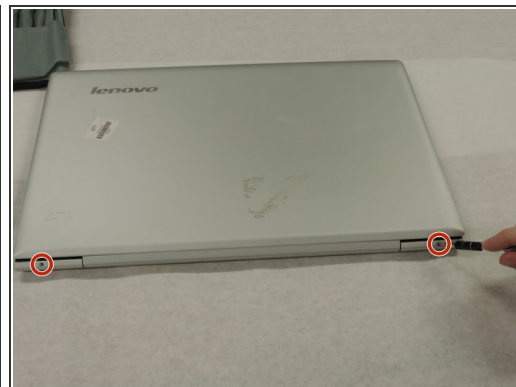
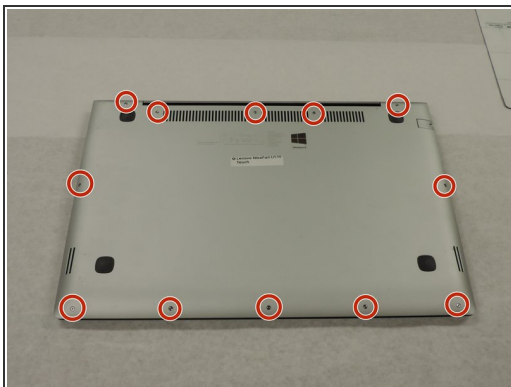
- [iFixit Opening Tools](#) (1)
- [Phillips #000 Screwdriver](#) (1)
- [Tweezers](#) (1)



PARTS:

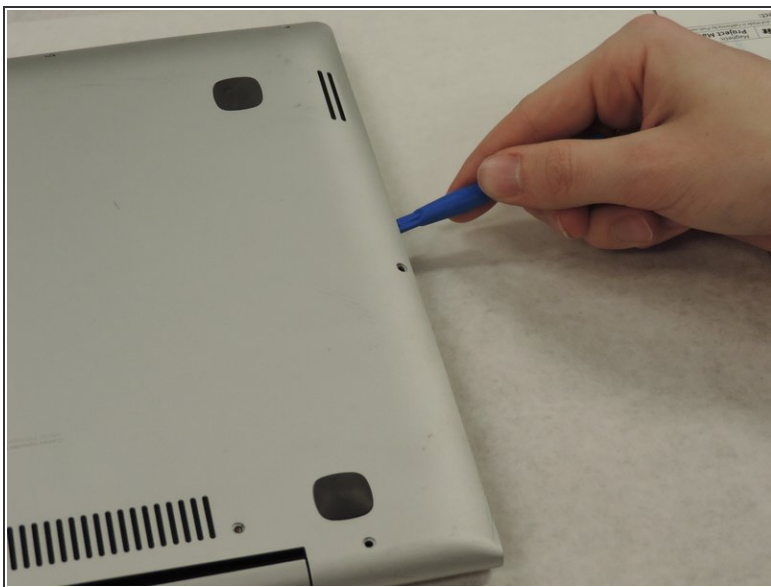
- [Wireless Network Card](#) (1)

Step 1 — Network Adapter



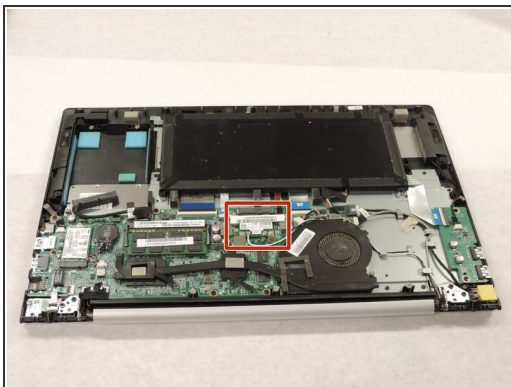
- Remove all of the screws on the back panel with a Phillips #000 screwdriver.
- Turn over the device and remove the two screws on the outside of the hinges.

Step 2



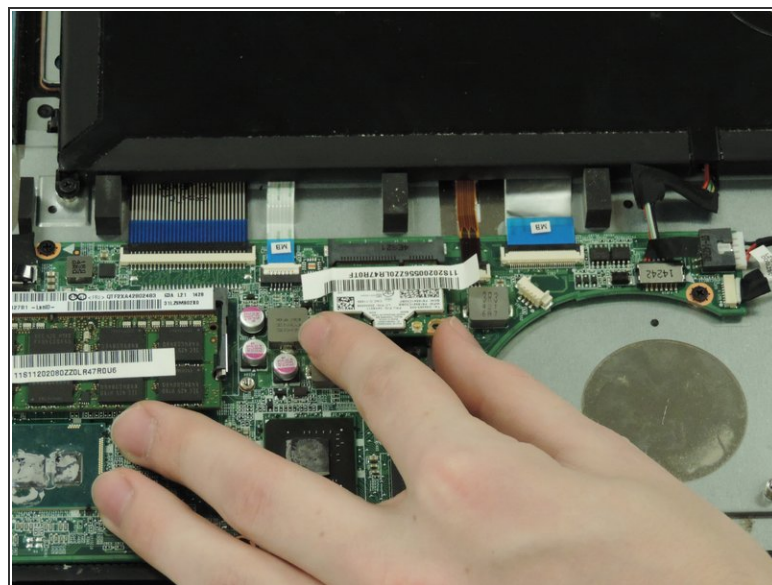
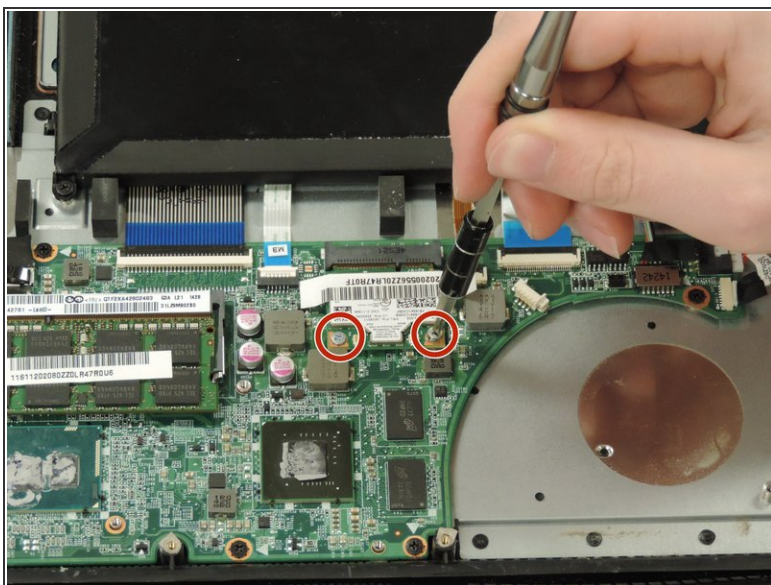
- Use a pry tool or iFixIt Opening tool to separate the back panel from the device.
- Lift the back panel straight up to remove.

Step 3



- Remove the black and white wires that attach the fan to the network adapter.

Step 4



- Remove the two screws attaching the network adapter to the motherboard.
- Remove the network adapter by sliding it down out of its connector.

To reassemble your device, follow these instructions in reverse order.