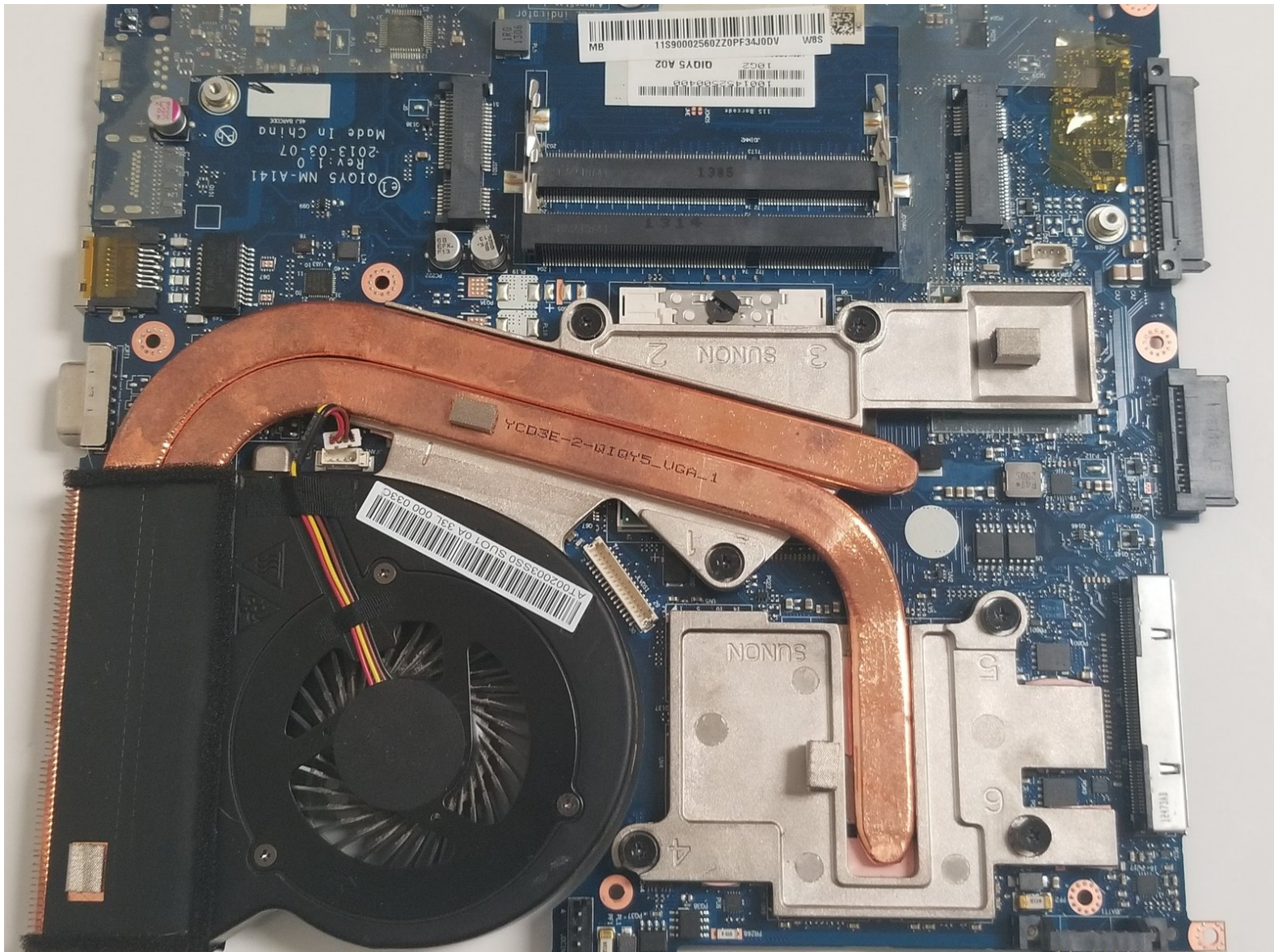




Lenovo IdeaPad Y400 Motherboard Replacement

This guide will show you how to remove the motherboard in your Lenovo IdeaPad Y400.

Written By: Rachel Simmons



INTRODUCTION

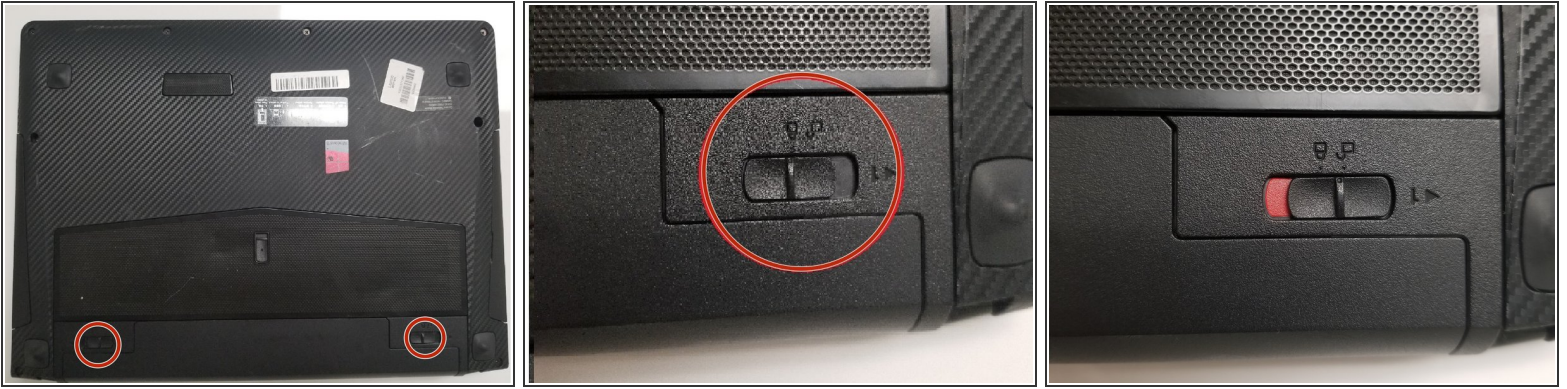
Use this guide to replace the motherboard of your laptop.



TOOLS:

- [Phillips #0 Screwdriver](#) (1)
 - [iFixit Opening Tools](#) (1)
-

Step 1 — Battery



- ✦ Make sure the laptop is upside down, then turn the laptop so that the battery is facing you. Now that the battery is facing you, there will be two locks, one on the left and one on the right.
 - Slide the lock to the right until you can hear a "click". Once you hear this click, you should be able to see the color red.

Step 2



- ✦ Unlike the first lock, the left lock does not stay in place. You will need to hold it in place as you take the battery out.
 - Slide the second (left) lock to the left and hold it there.

Step 3



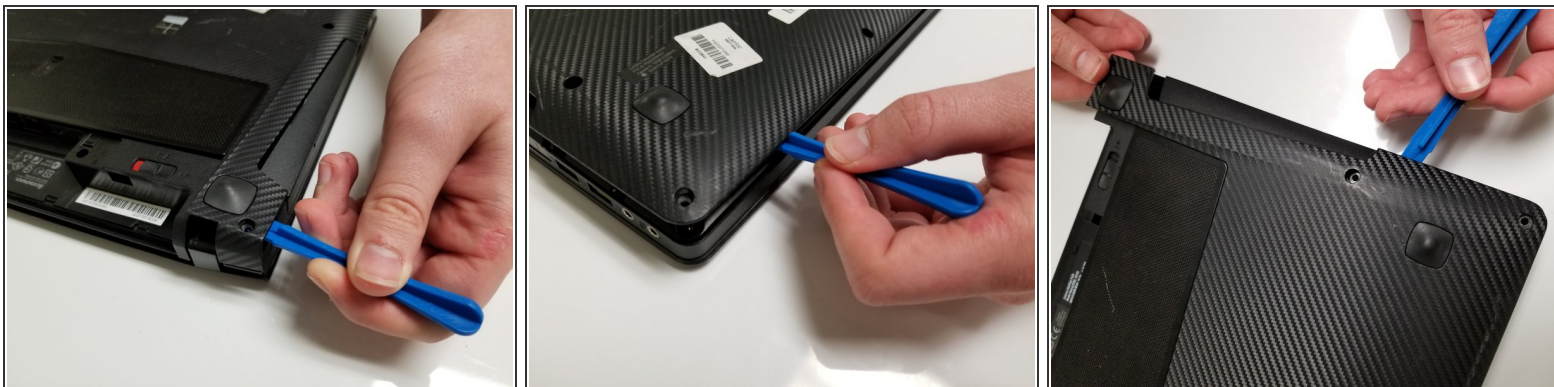
- Gently pull the battery out.

Step 4 — Back Panel



- Remove the eight 9mm screws with a Phillips #0 screwdriver.

Step 5



- Use the plastic opening tool to remove the back panel from the device.

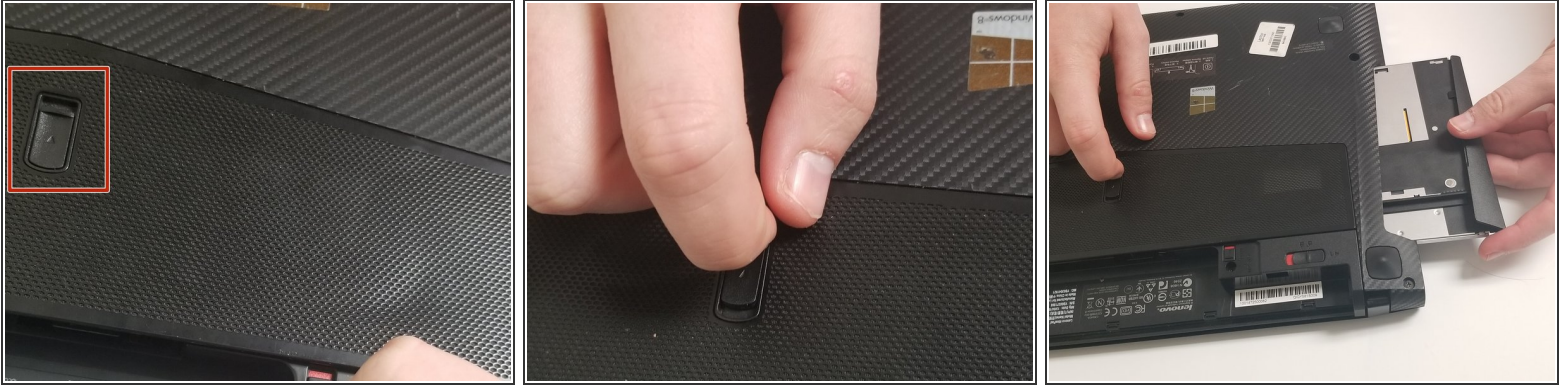
⚠ Be careful not to force the back off, as you may break the clips keeping it down.

Step 6 — Optical Drive



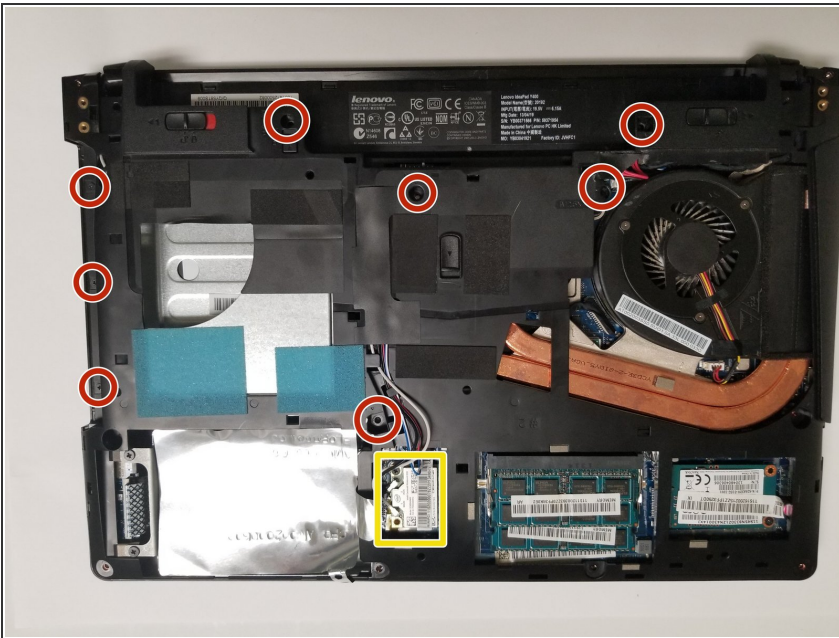
- Move the lock down until you see red and hear a slight click.

Step 7



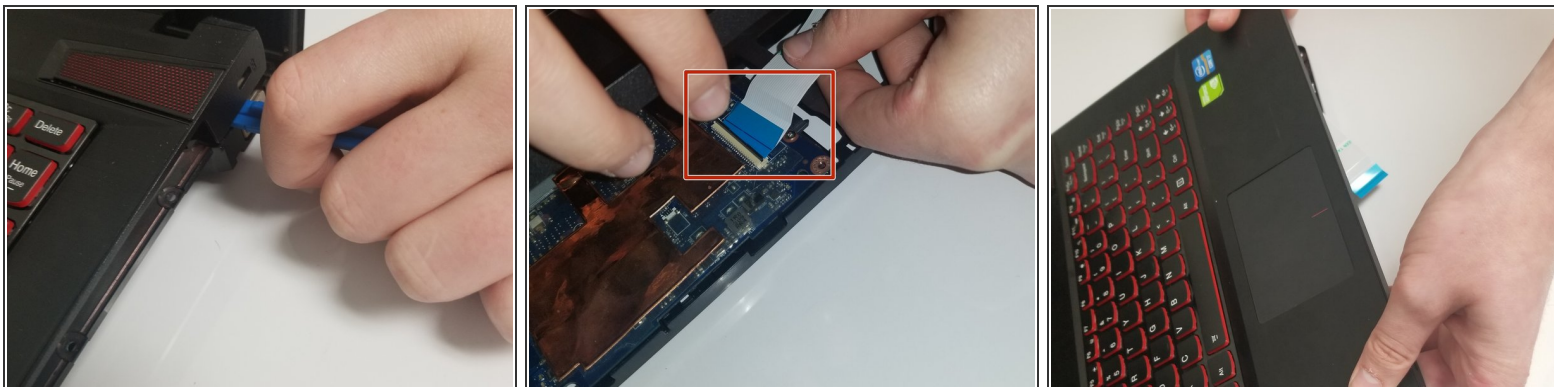
- Hold this lock down while removing the optical drive.

Step 8 — Motherboard



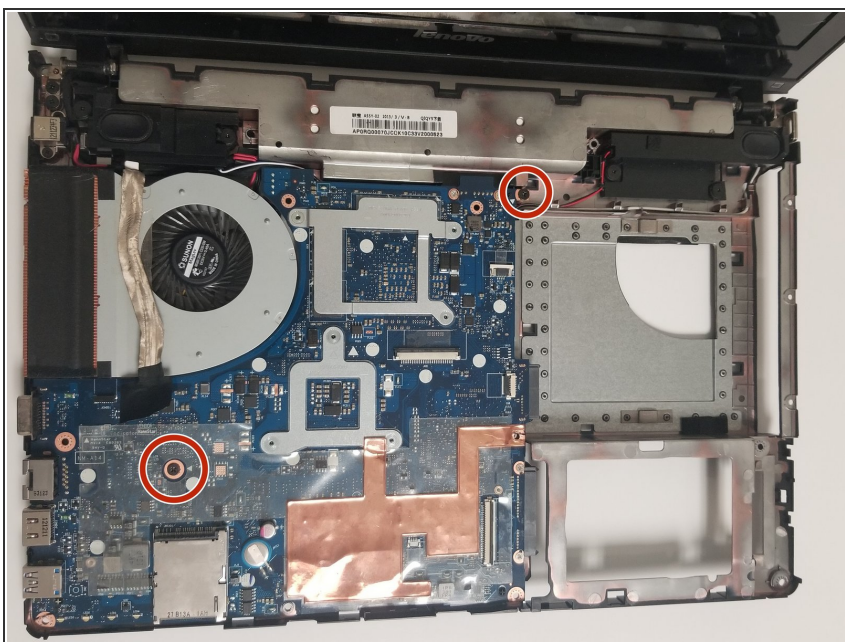
- Unscrew the screws using a Phillips #0 screwdriver.
- Unplug the wireless adapter to fully remove the motherboard.
- ⚠ If you don't want to break any of the parts you might want to take out the RAM, SSD, and the Hard Drive.
- ⓘ Screw sizes will be 4mm and 9mm

Step 9



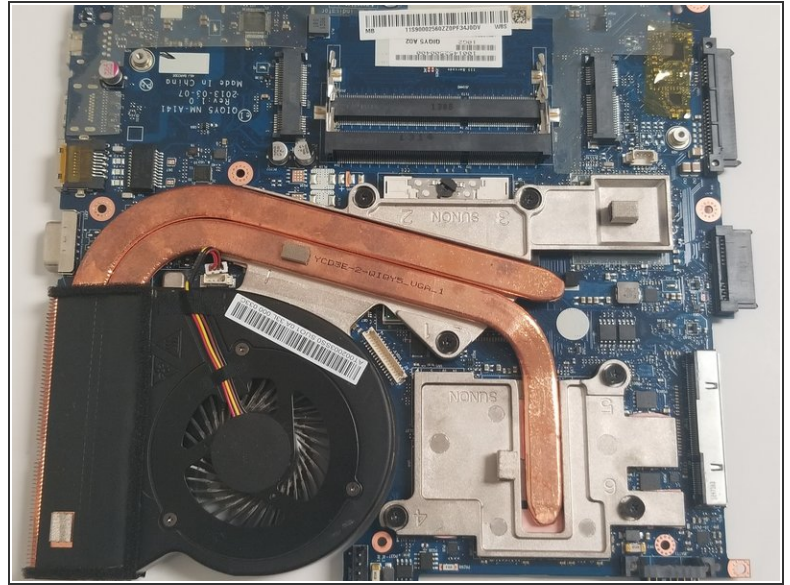
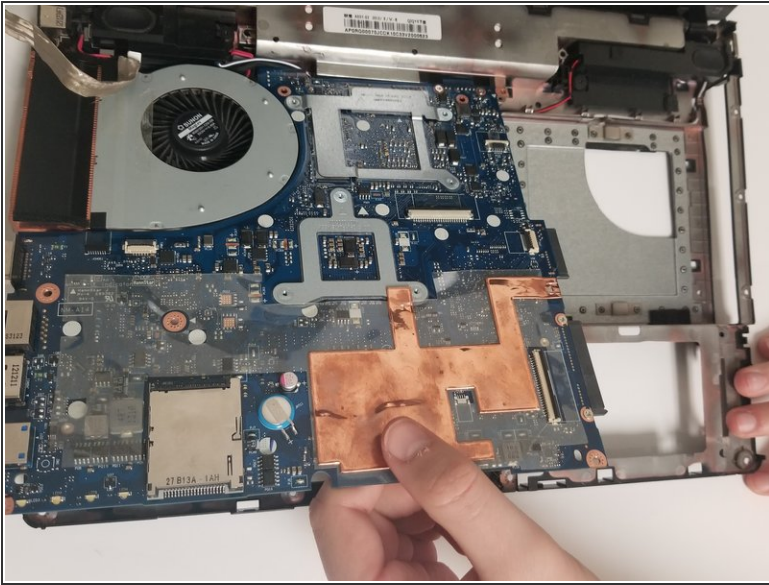
- Use the plastic opening tool to take off the front panel.
- Unplug the blue wire to remove the front panel.

Step 10



- Fully remove the front panel.
- Unscrew the 9mm and 4mm screws (there is one of each screw).

Step 11



- After unscrewing the screws, remove the motherboard.

To reassemble your device, follow these instructions in reverse order.