



Lenovo IdeaPad Yoga 11S Top Assembly Replacement

Use this guide to expose all elements of the laptop such as the trackpad, RAM, Battery, and Display. In order to remove any of these parts, the top enclosure must first be removed.

Written By: Landon Epps



INTRODUCTION

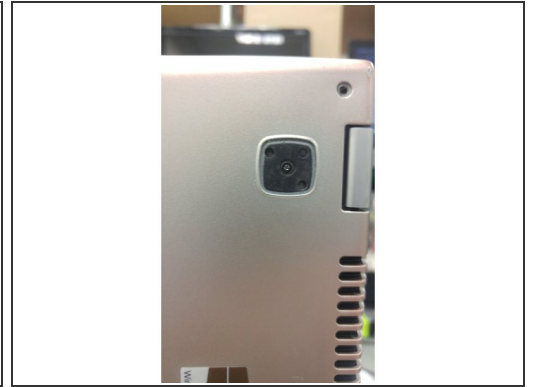
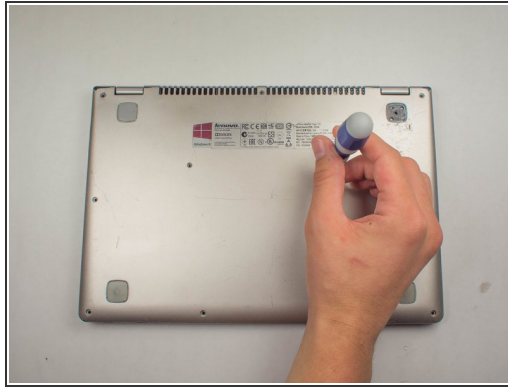
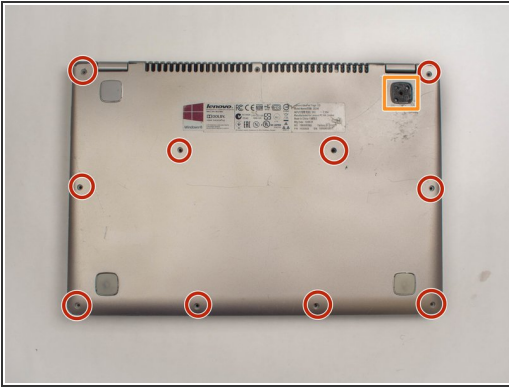
The top assembly contains the keyboard and trackpad. Removing it allows access to the logic board, battery, and RAM.




TOOLS:

- [Phillips #0 Screwdriver](#) (1)
-

Step 1 — Top Assembly



 Remember to power off the device before removing any parts.

- Position the laptop so that the bottom enclosure is facing upward.
- Locate the ten 1.9mm screws holding the bottom enclosure in place.
- Use a Phillips #0 Screwdriver to remove all of the screws.
- Under the rubber pads, there can be screws as well.

Step 2 — Remove Keyboard



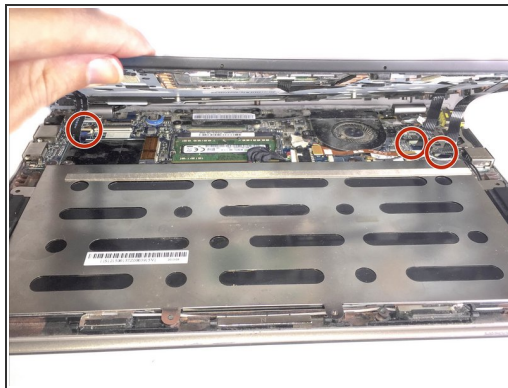
- Remove the keyboard starting at the top
- Remove the ribbon cable and then fully remove the keyboard

Step 3



- Remove the 2 screws holding down the top

Step 4



- Position the device where it sits on the bottom encasing with the display open.
- Grab the front edge of the top assembly and lift it up carefully.
- ⚠ There are three ribbon cables that attach the top assembly to the motherboard. Lift carefully to avoid damaging them.
- Gently slide the three ribbon cables out of their slots.
- Remove the top assembly completely by pulling it off of the device.

To reassemble your device, follow these instructions in reverse order.