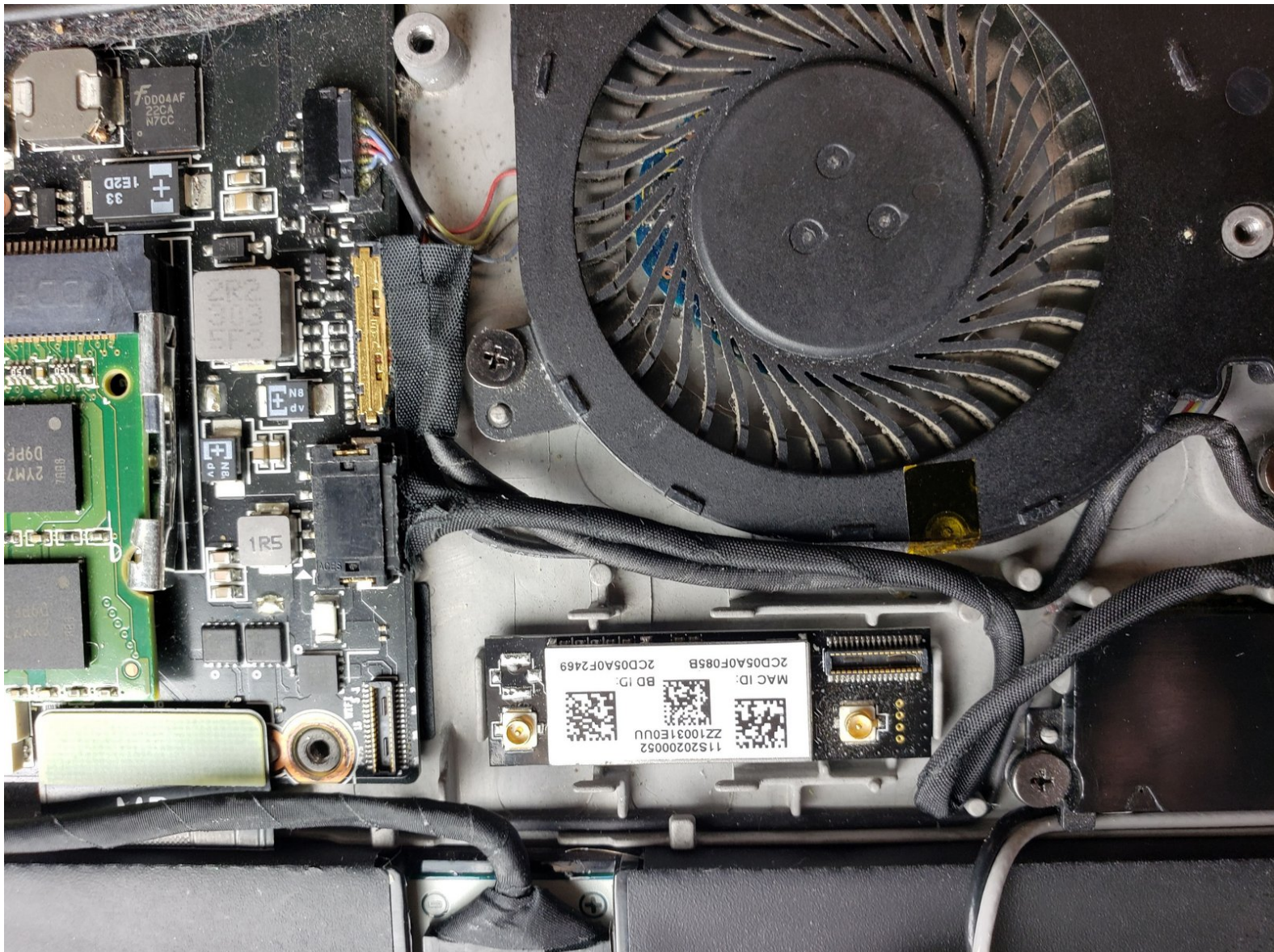




Lenovo IdeaPad Yoga 13 Wi-Fi Card Replacement

This guide will teach you how to remove the Wi-Fi card in your Lenovo IdeaPad Yoga 13.

Written By: Hashim Adel Jaber



INTRODUCTION

Replacing the Wi-Fi card is a semi-invasive repair and should only be attempted if your computer is not recognizing a wireless antenna. This symbol in the hot-bar on the bottom right that normally indicates a wireless connection will appear to be a small box with a wire coming out.

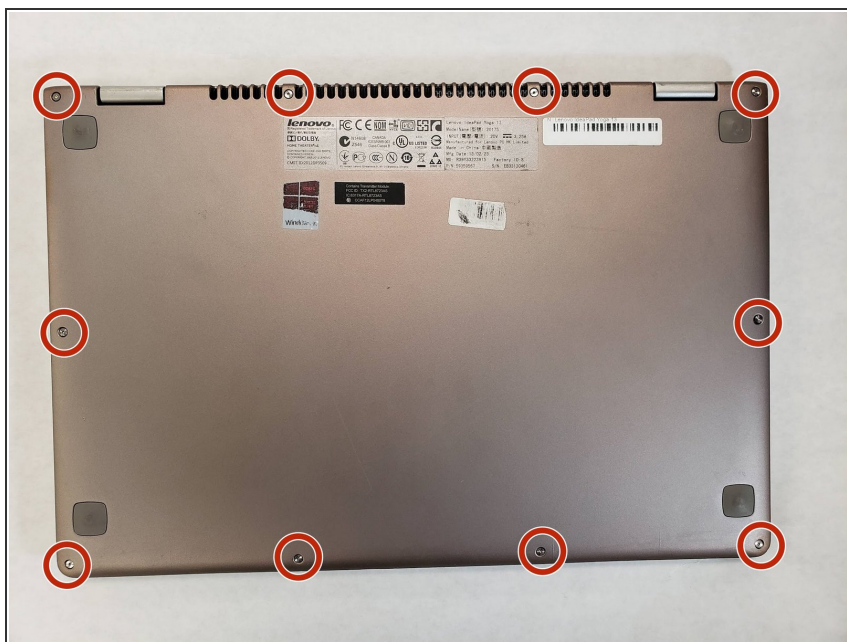
NOTE: It is VERY important to make sure to check that Wi-Fi is NOT DISABLED on your device before attempting this repair, as this may be the problem and a repair attempt will only increase the chances of causing damage.



TOOLS:

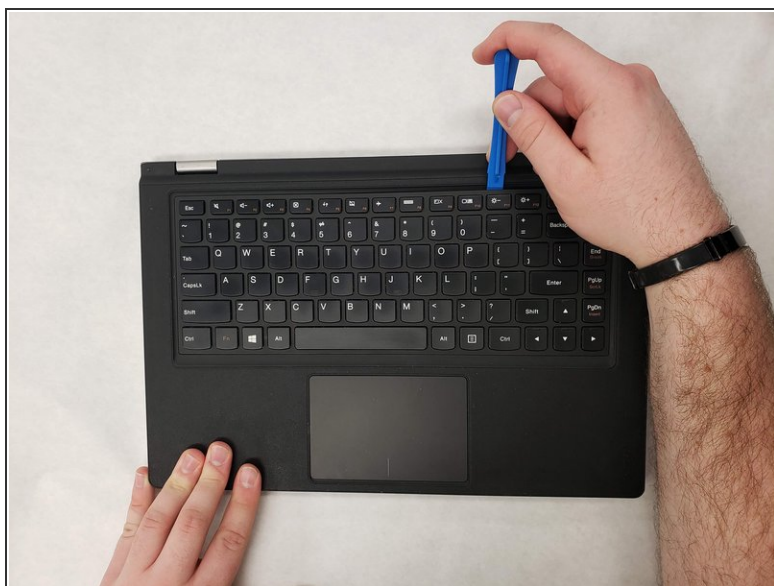
- [iFixit Opening Tools](#) (1)
 - [Metal Spudger](#) (1)
 - [Tweezers](#) (1)
 - [T4 Torx Screwdriver](#) (1)
 - [Phillips #0 Screwdriver](#) (1)
-

Step 1 — Wi-Fi Card



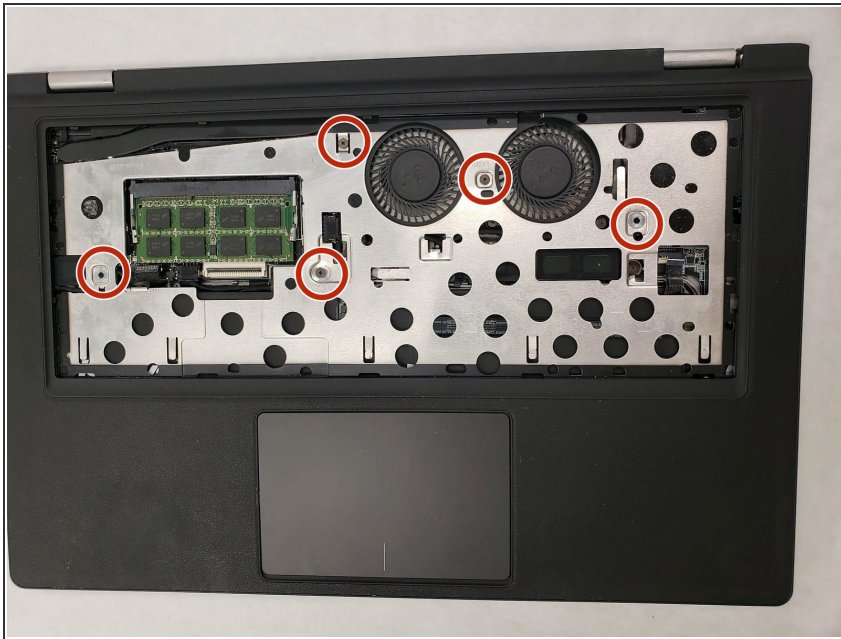
- Remove the ten screws on the back panel of the laptop using the T4 Torx screwdriver.
- Remove the back panel from the device.

Step 2



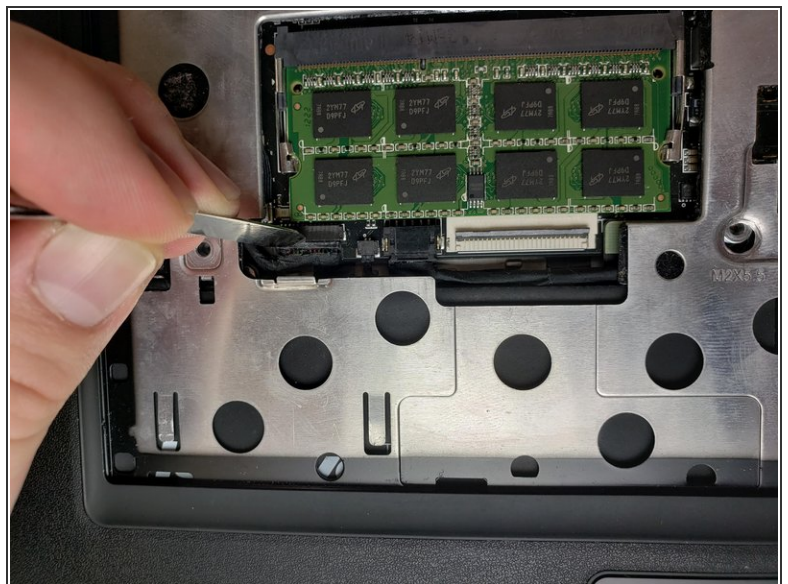
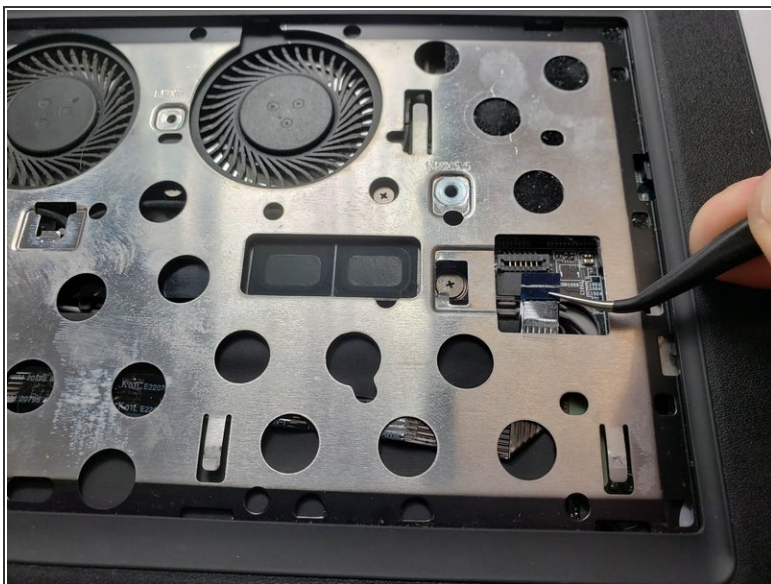
- Use blue the opening tool to gently further separate the keyboard bezel.
- Carefully apply pressure to the keyboard. It should easily pop out.

Step 3



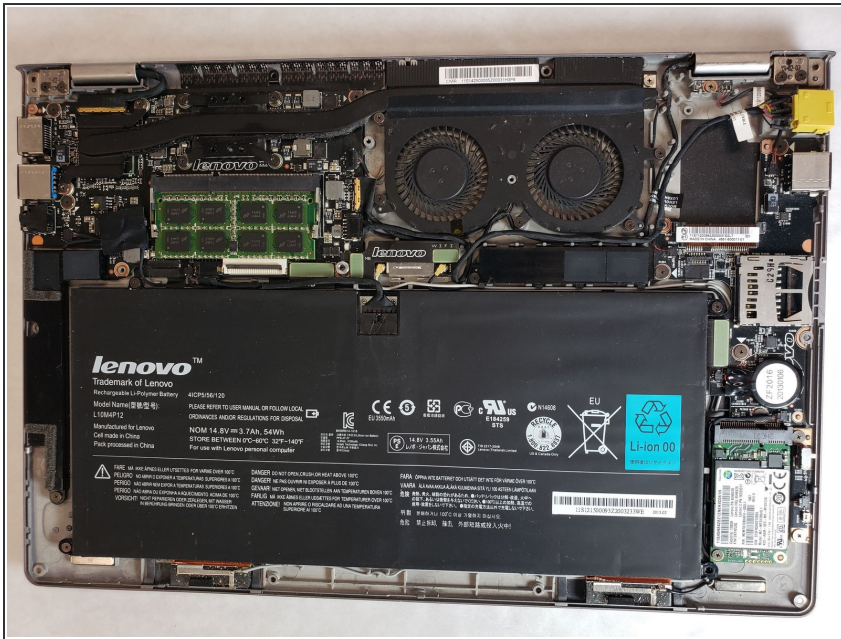
- To remove the keyboard bezel (black cover containing the mouse pad) remove the five screws using the Phillips #0 screwdriver.

Step 4



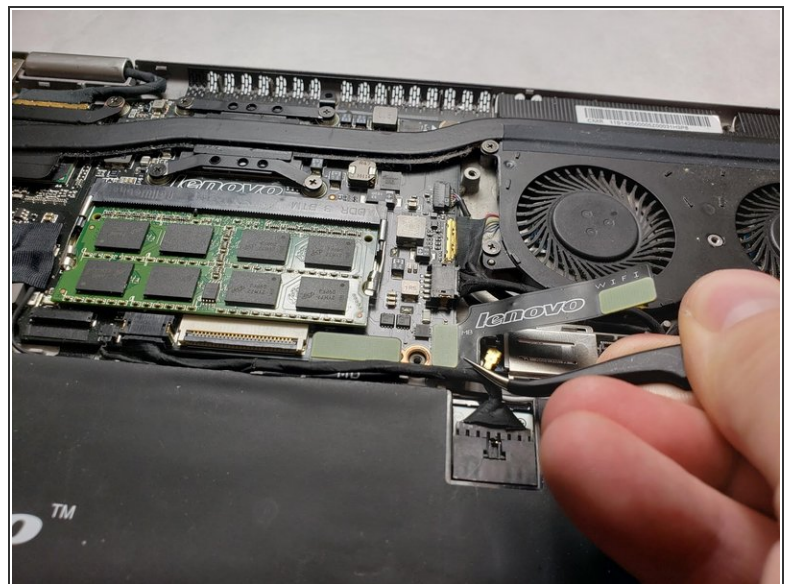
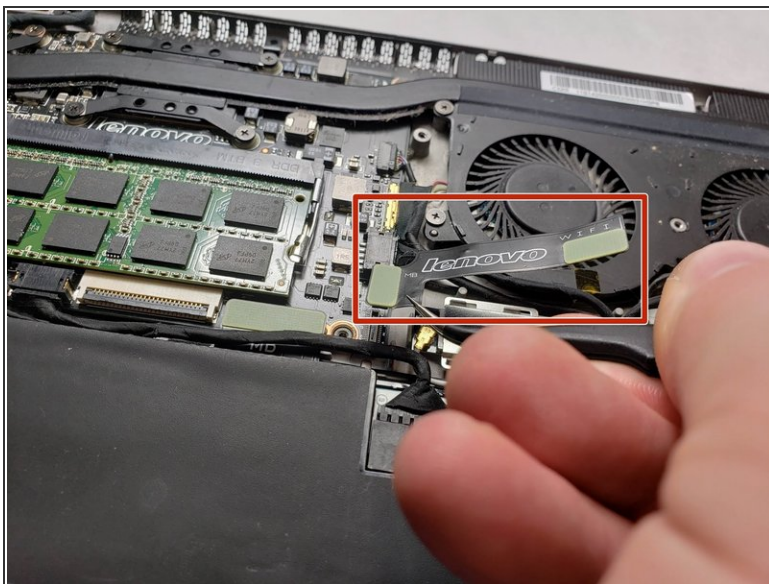
- Unplug the connections from motherboard, including the mouse and keyboard connections.

Step 5



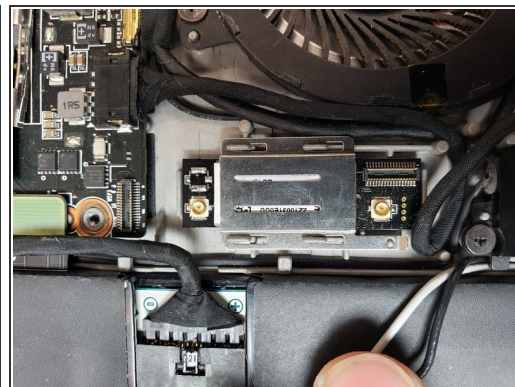
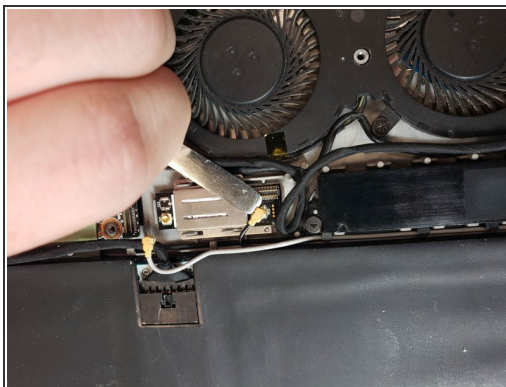
- Remove the outer bezel to reveal the entire internal layout of the computer.

Step 6



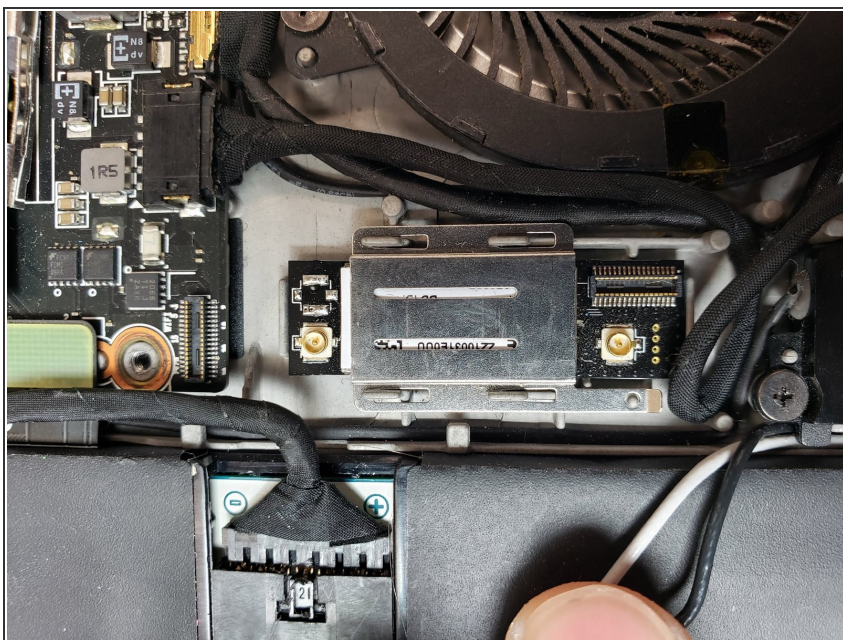
- Remove the ribbon cable covering the card by disconnecting the two connection points on either side.

Step 7



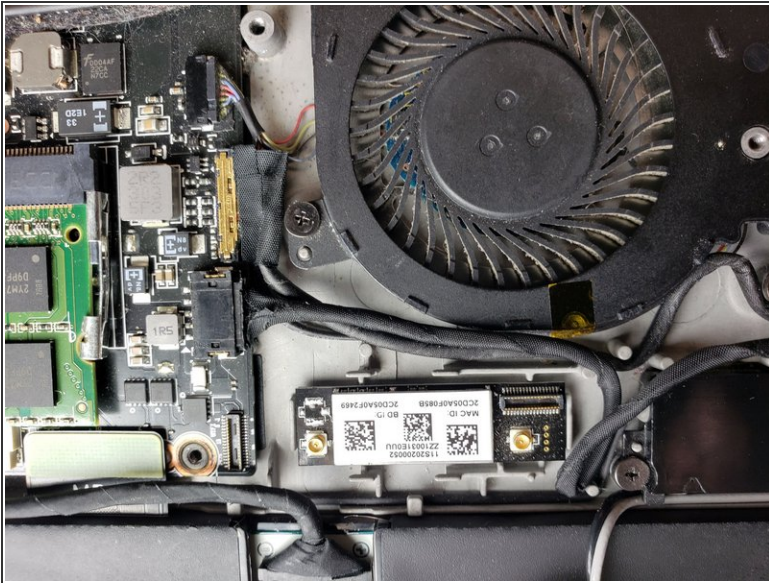
- Disconnect the white and black antenna cables.

Step 8



- Lift up the bottom right lever on the WiFi card metal bracket.
- Slide the bracket to the left to disconnect it from the 4 plastic legs holding it down.

Step 9



- Lift and remove the card.

To reassemble your device, follow these instructions in reverse order.