



# Lenovo IdeaPad y510p Network Card Replacement

This guide shows how to open a Lenovo IdeaPad y510p laptop and replace the network (WiFi) card.

Written By: Alex David



---

## INTRODUCTION

This replacement requires small Phillips head screwdrivers. It is also recommended to research if the replacement card will work with the laptop, as only certain cards are compatible. And, as when taking apart any sensitive electronics, be sure to touch something metal to remove any static charge you may have accumulated.



### TOOLS:

- [Phillips #0 Screwdriver](#) (1)
-

## Step 1 — Network Card



- Slide the left battery lock to the left
- While holding the right battery lock to the right, pull the battery out.

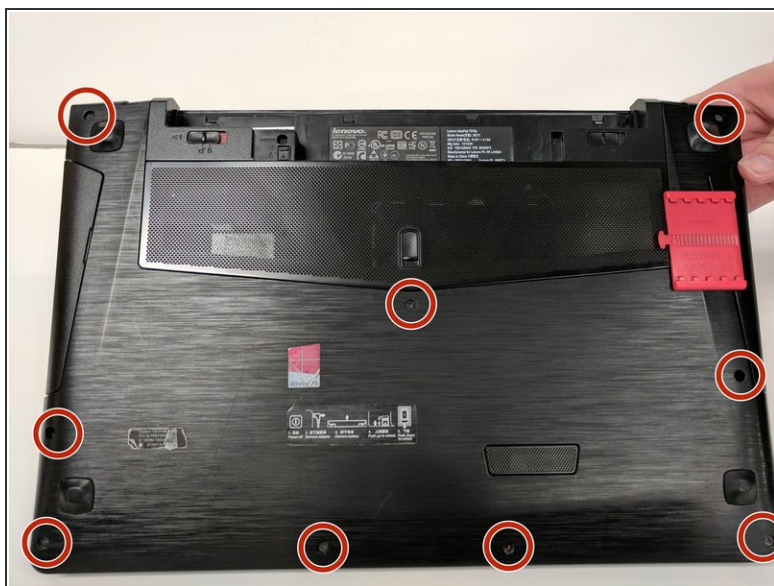
## Step 2



- Slide the disk drive lock up.
- While holding the lock in the middle of the laptop up, remove the disk drive



## Step 3



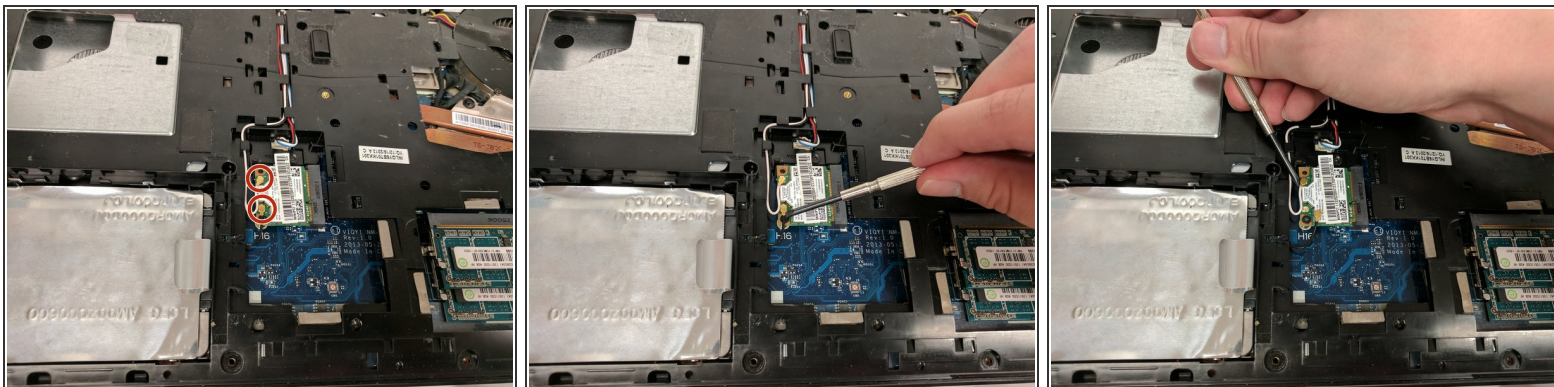
- Unscrew all nine of the backplate screws with a #0 Phillips screwdriver.

## Step 4



- Carefully pry the backplate off of the laptop.

## Step 5



- Pry the wireless antenna connectors off of the network card.

⚠ Be careful not to damage the connectors on the wireless card.

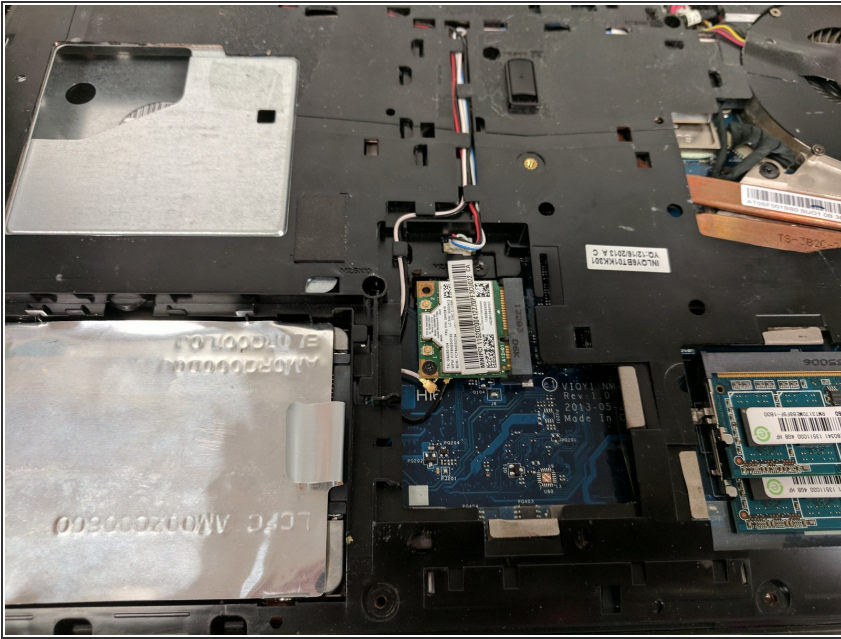
## Step 6



- Unscrew the screw holding the network card in place with a #0 Phillips screwdriver



## Step 7



- Slide the network card out of the connector.

To reassemble your device, follow these instructions in reverse order.