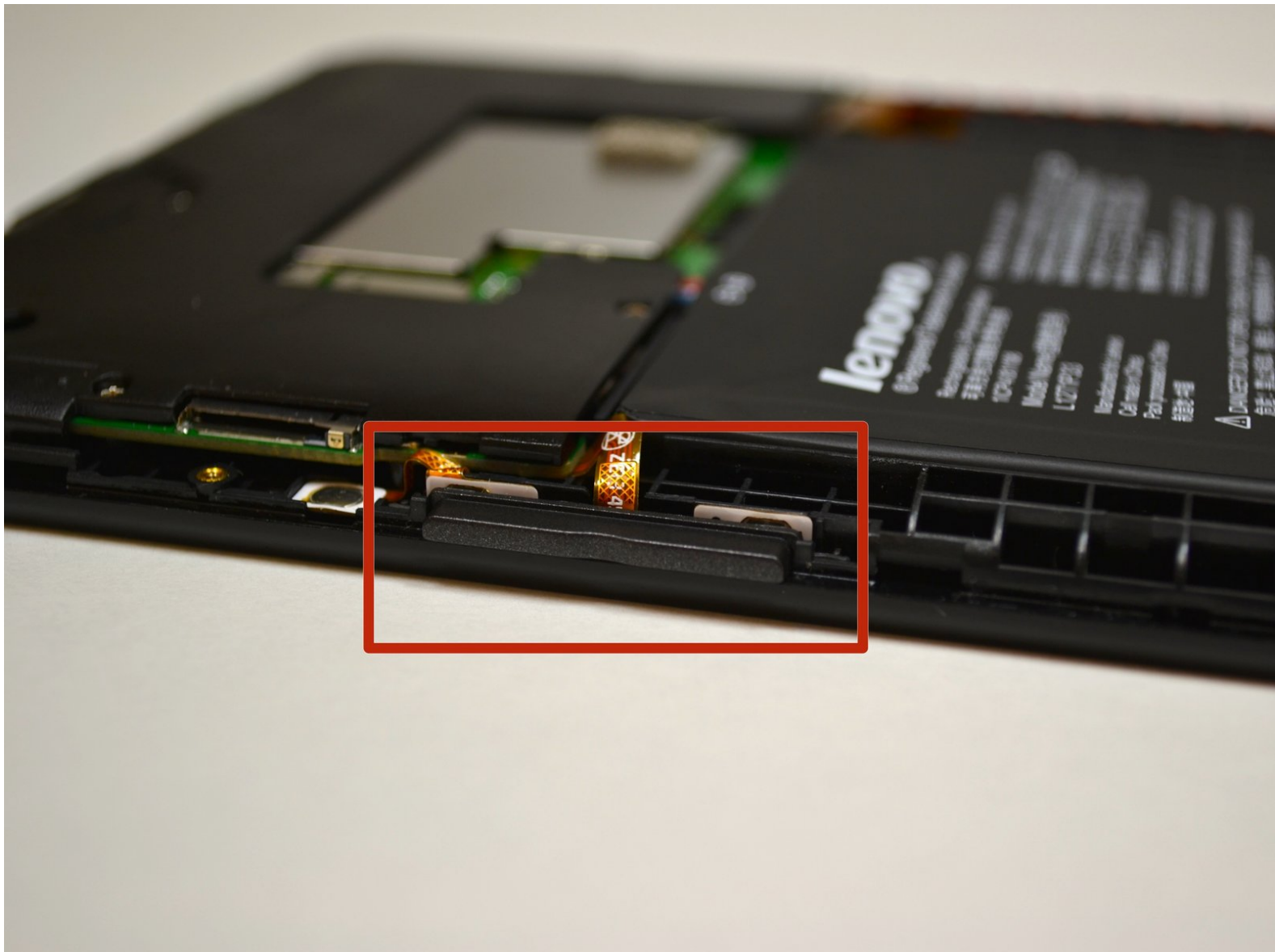




Lenovo IdeaTab A1000L System Board Replacement

You will learn the steps on how to remove and replace the system board.

Written By: Peter Newell



INTRODUCTION

Before getting started you should find a static free environment and a table for adequate workspace. Also, make sure you have all the required tools before trying to replace the components in the device to avoid breaking anything.




TOOLS:

- [Phillips #000 Screwdriver](#) (1)
 - [iFixit Opening Tools](#) (1)
 - [Tweezers](#) (1)
-

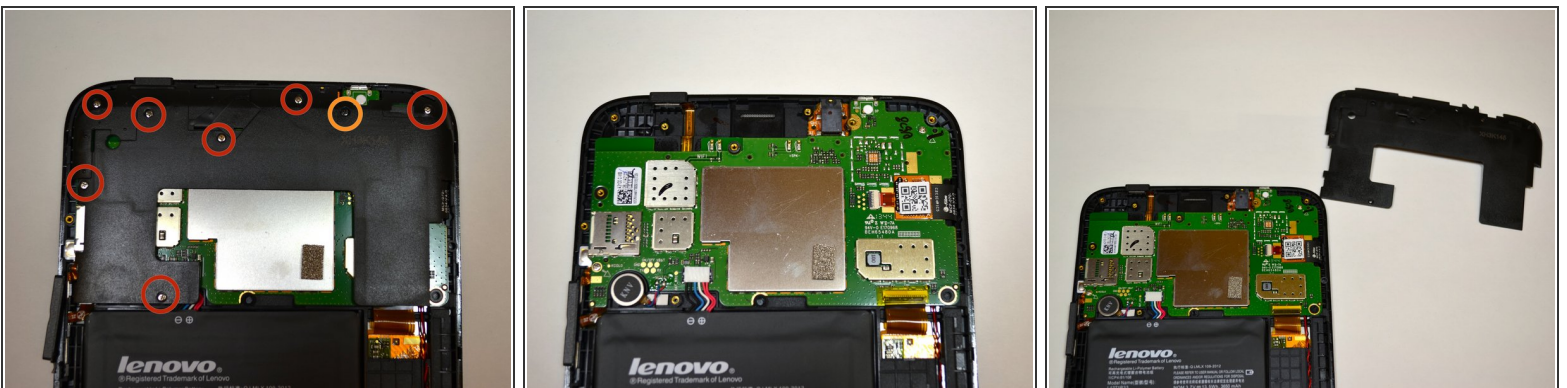
Step 1 — Battery



 Be sure to power off your device before taking it apart.

- Locate the small tab, marked with the lock symbol on the upper right hand of your IdeaTab above the volume control buttons. Use your fingernail to gently loosen this tab.
- Use your Phillips #000 screwdriver and remove the 3.5mm screw and put it aside.
- Using your blue, plastic opening tool, begin to gently pry the back panel away from the front panel starting by where the screw was.

Step 2



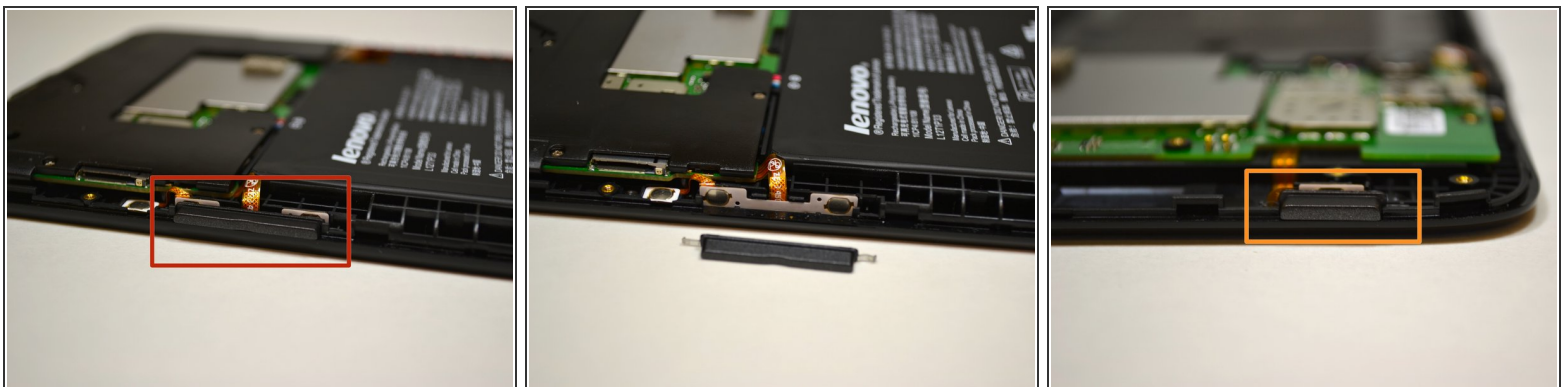
- Locate the black back plate, above the battery.
- Using a Phillips #000 screwdriver remove the 7 silver 3.5mm screws from the back plate.
- Next, with the same screwdriver, remove the black 4.1mm screw.
- Gently remove the back plate from the device.

Step 3



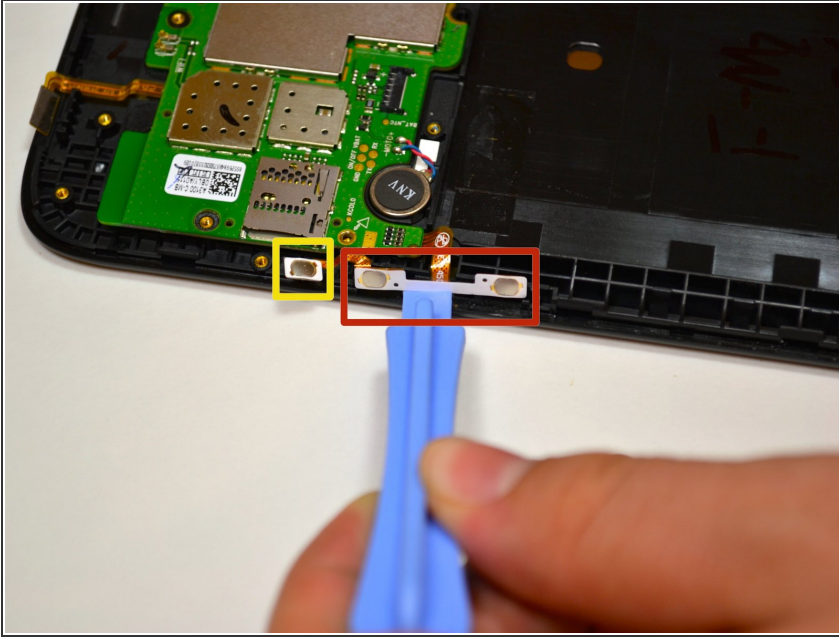
- Use the plastic opening tool to disconnect the battery wires from the system board. Slide your opening tool under the white plastic piece and pry it up.
- Again, use the plastic opening tool to loosen the battery from the device by lifting up on the battery on all sides. This will detach the battery from the adhesive.
- Gently place the battery aside.

Step 4 — System Board



- Locate the volume button on the right hand side of the tablet.
- Slide the volume button upwards to remove it.
- On the top-left of the device there is a power button similar to the volume button. Remove it by sliding the button upwards.

Step 5



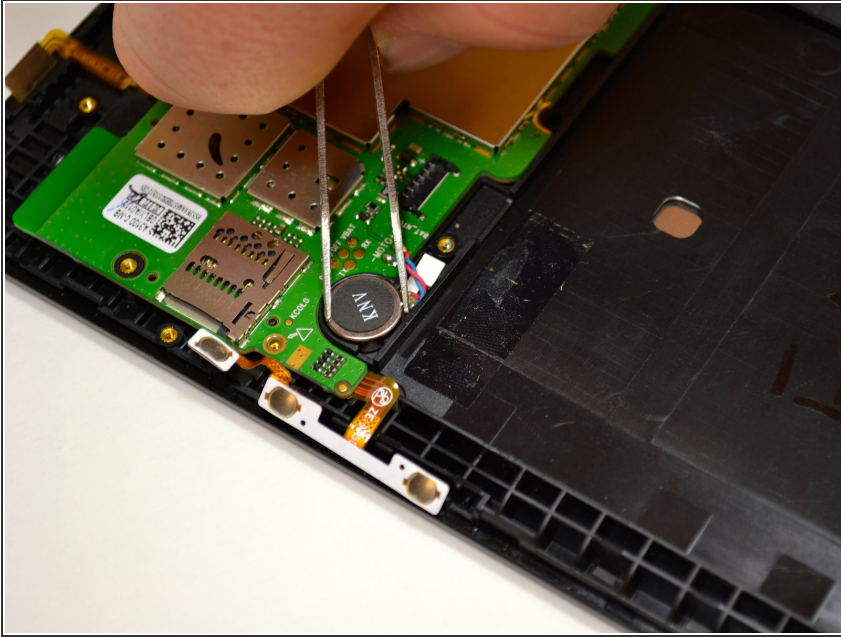
- Locate the volume button mechanism, or FPC.
- The FPC is adhered to the device frame. Remove it by prying it off using a tweezer or plastic opening tool.
- Remove the FPC that is on the left of the volume button FPC.

Step 6



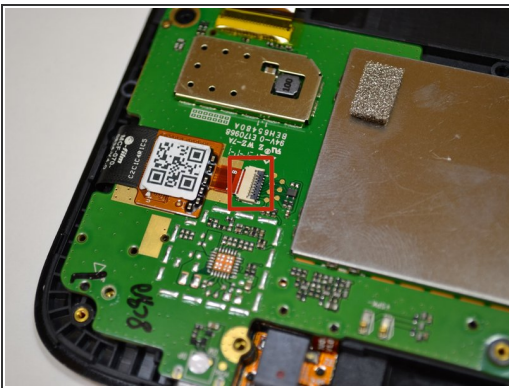
- Locate the power button FPC.
- Remove the power button FPC by prying it off using a tweezer or plastic opening tool.

Step 7



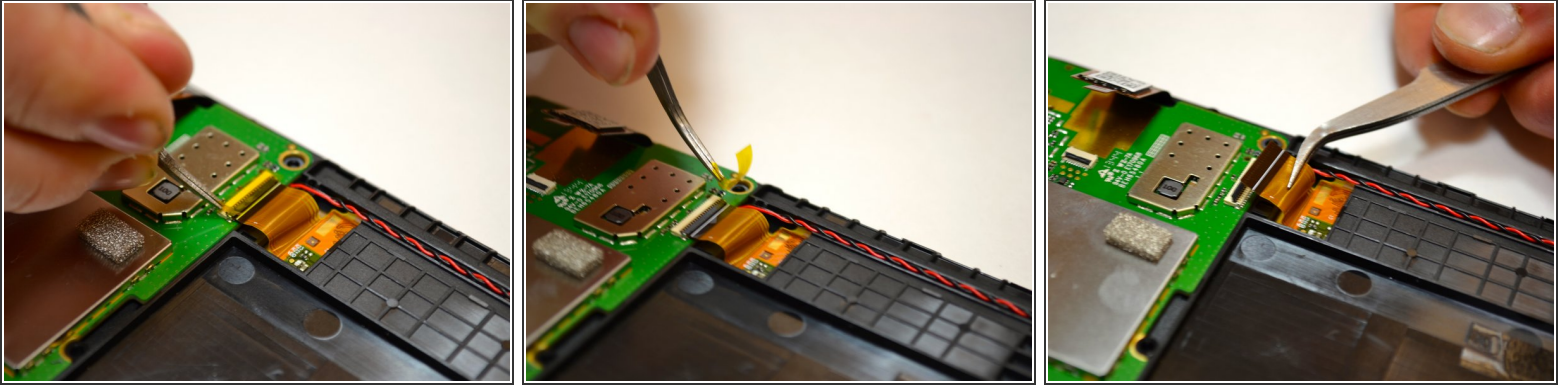
- Remove the circular motor unit by gently pulling up on it and prying it up using tweezers.

Step 8



- Locate the component with a QR code printed on it.
- To disconnect this component you must first detach it from the white connector.
- To detach it from the connector, use a tweezer to gently flip the black piece up to a 90 degree angle.
- ❗ The white connector may have a yellow mylar sticker over it. Peel off the sticker and continue.
- Once the black piece is pointing up, the orange wires can be removed from the connectors. Using a tweezer pull the orange wires horizontally outwards from the white connector.

Step 9



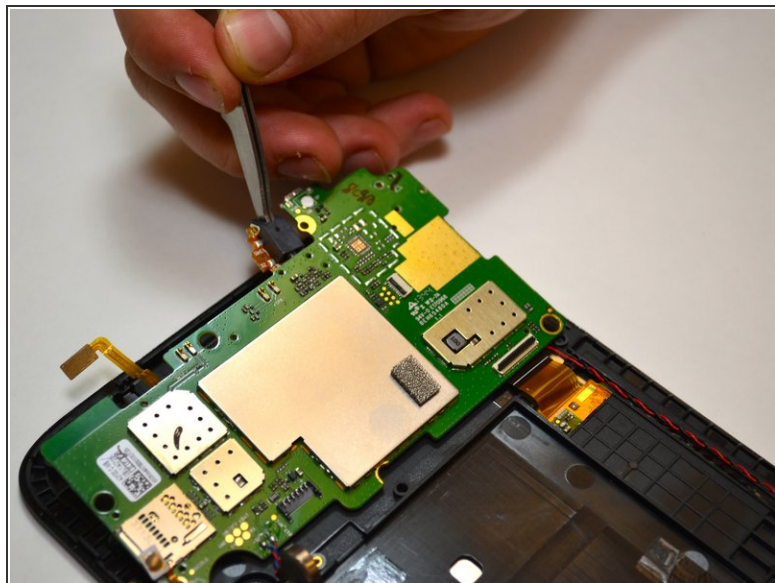
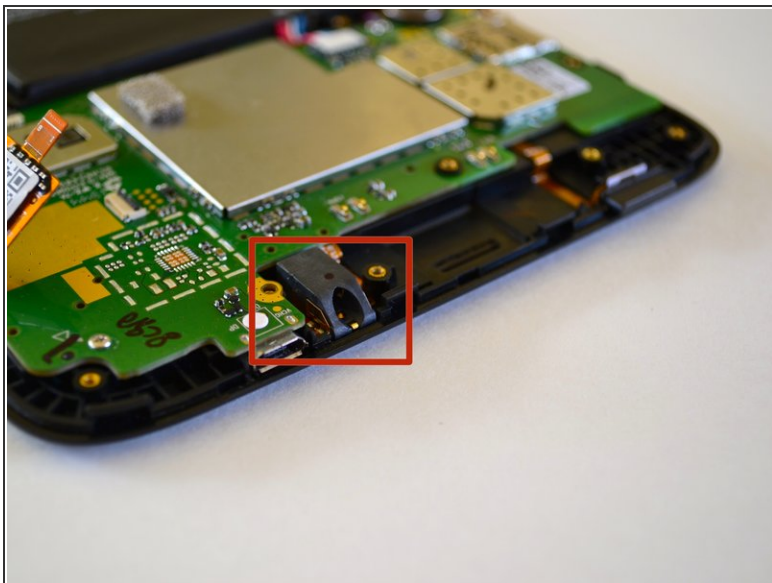
- Locate the orange cable to the right of the battery tray.
- To detach it from the connector, use a tweezer to gently rotate the black piece on the connector 90 degrees so it is pointing up.
- ❗ There may be a yellow mylar sticker on top of the white connector. Peel off the sticker and continue.
- Once the black piece is pointing up the orange wires can be removed from the connectors. Using a tweezer pull the orange wire horizontally outwards from the white connector.

Step 10



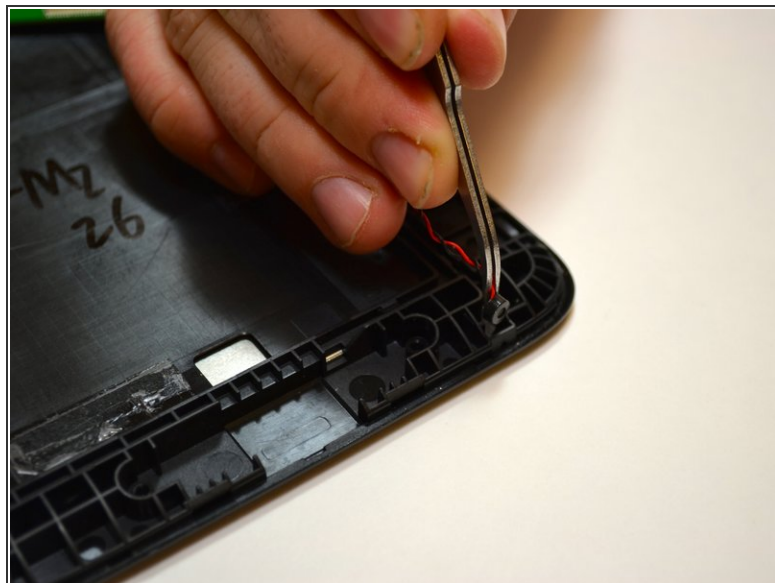
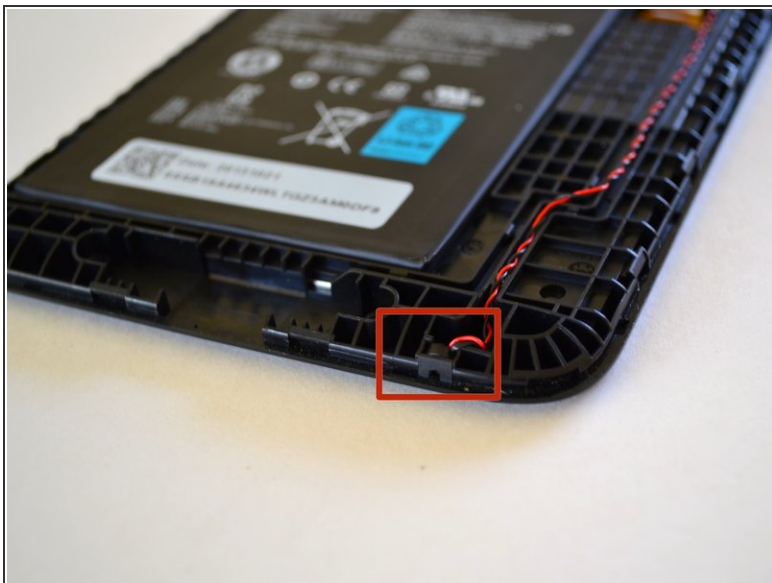
- Using a #000 Phillips screwdriver, remove the two M1.4 3.5mm screws from the system board and set them aside.

Step 11



- Locate the audio assembly near the top-right of the device.
- Remove the audio assembly by inserting the tweezers in the circular hole in the black plastic box and pulling upwards.

Step 12



- Locate the microphone at the bottom of the device.
- Remove the microphone from its cavity by using a tweezer to pull up the black and red cords and microphone with them.

Step 13



- The system board is now completely free from the device. Carefully lift the system board up off of the device and place on a padded surface.

To reassemble your device, follow these instructions in reverse order.