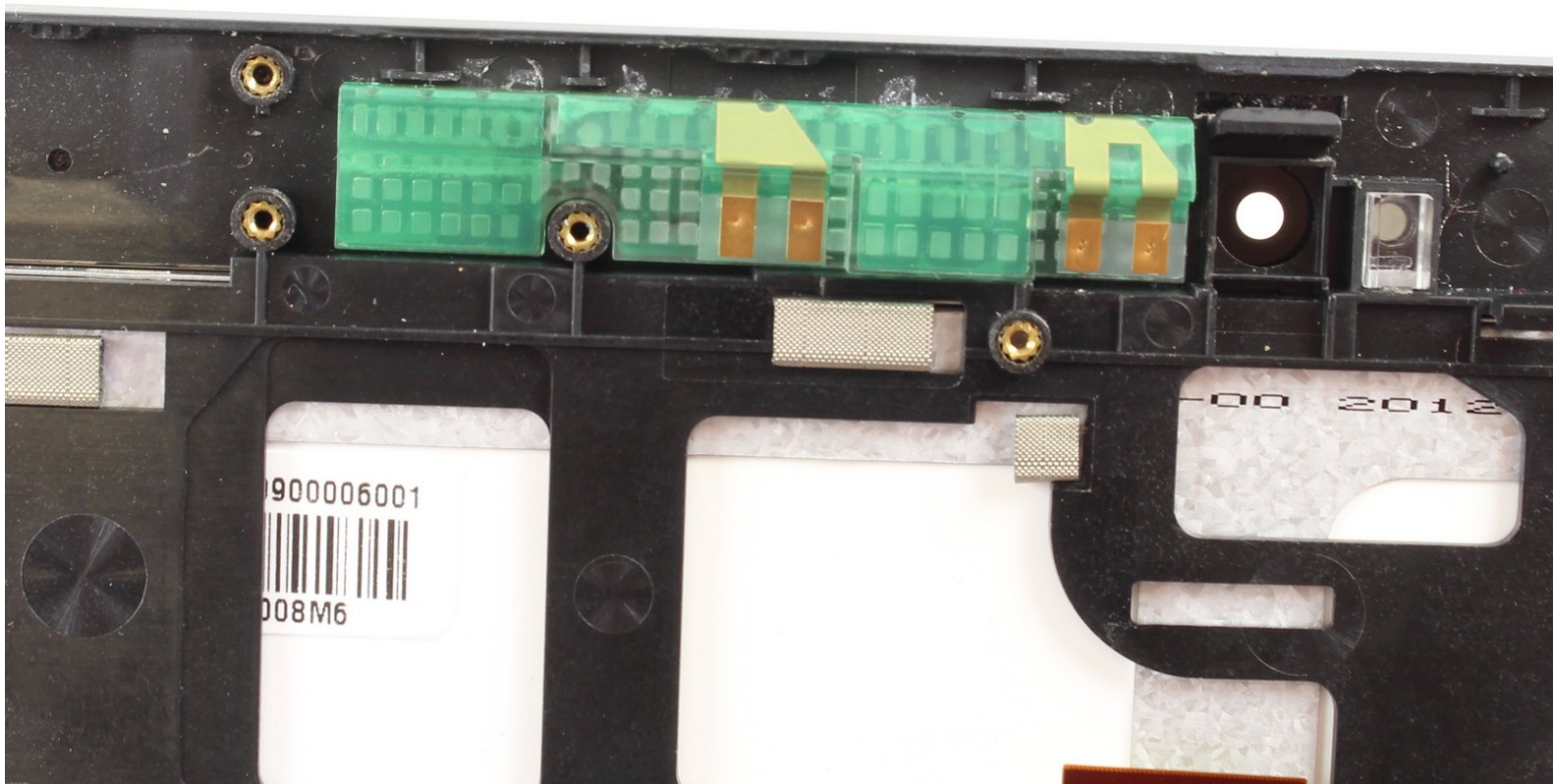




Lenovo IdeaTab A2109 WIFI/GPS Antenna Replacement

Replace the WIFI/GPS antenna in your Lenovo IdeaTab A2109.

Written By: Bcohen



INTRODUCTION

Use this guide to replace the WIFI/GPS antenna

TOOLS:

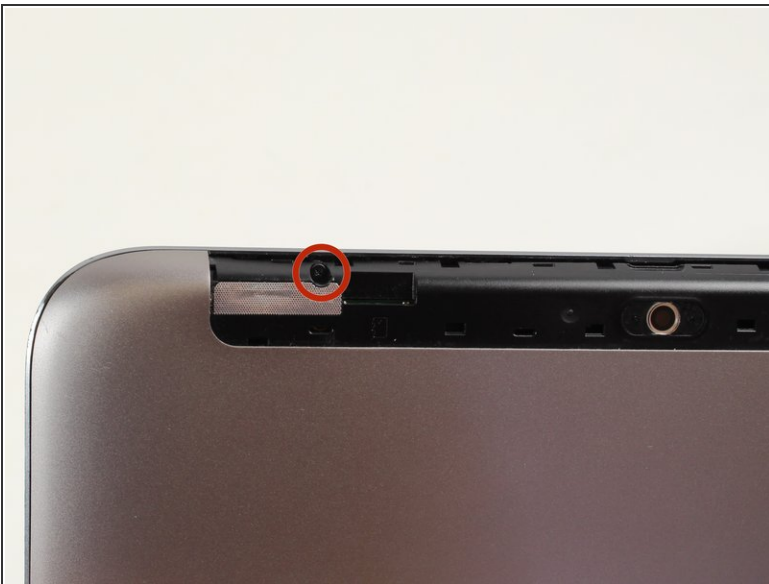
- [iFixit Opening Tools](#) (1)
 - [Phillips #00 Screwdriver](#) (1)
 - [Tweezers](#) (1)
-

Step 1 — Battery



- Look at the back of the tablet and locate the speakers on top of the rear cover.
- There is a smaller indentation in the plastic cover that runs across the top of the device.
- Wedge the plastic opening tool, under the middle of the cover as shown, then push up and the cover will pop off.

Step 2



Remove SD card if present.

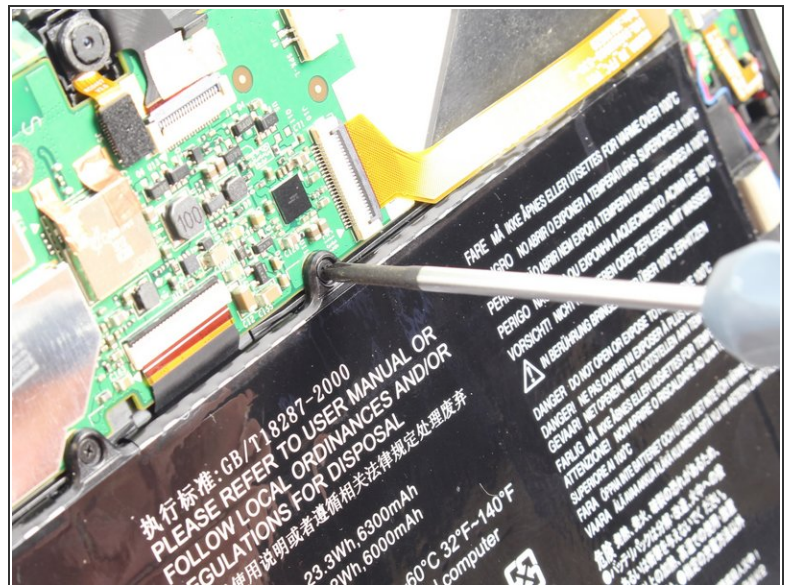
- Remove two black 3mm Phillips #00 screws.

Step 3



- Disconnect battery power connector by pinching the connector with tweezers, and sliding it out of the housing.

Step 4



- Remove seven black 3mm Phillips #00 screws.
- ⓘ The top right corner screw is underneath a yellow ribbon. Lift the ribbon up without disconnecting it and unscrew the screw.

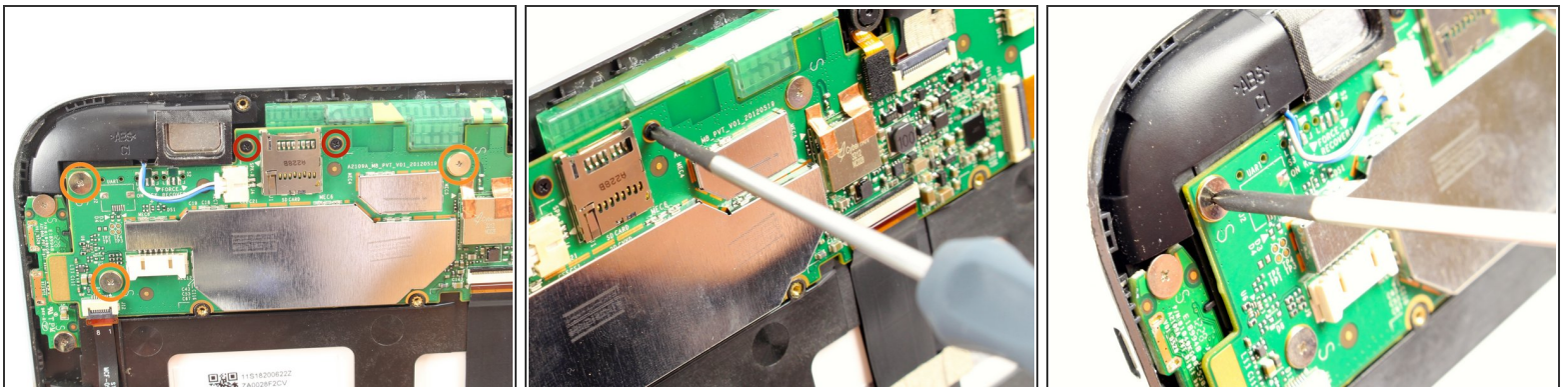
This document was generated on 2020-03-29 06:19:25 PM (MST).

Step 5



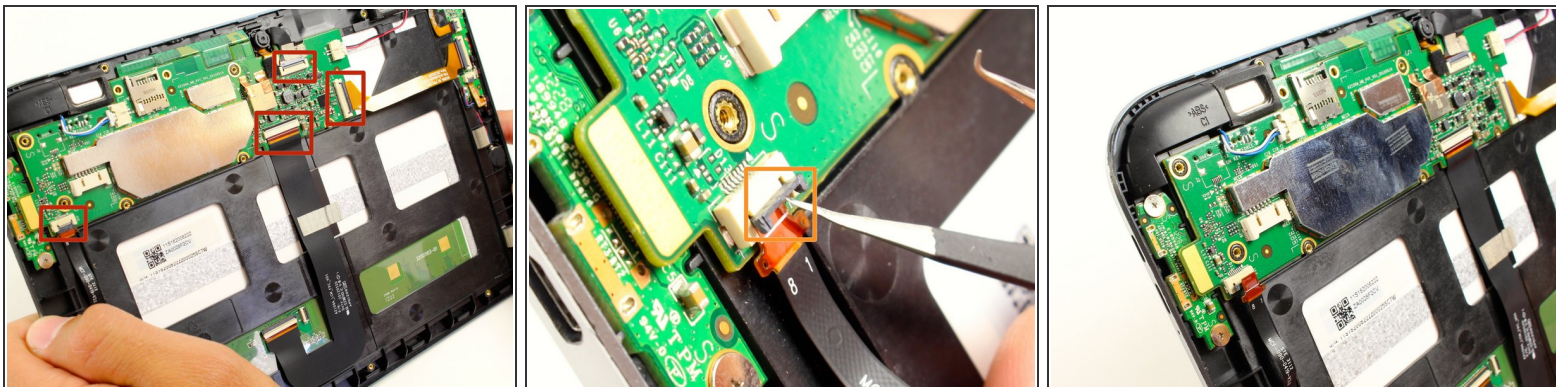
- Now you can take the battery out in order to either replace it or continue disassembling the device.

Step 6 — System Board



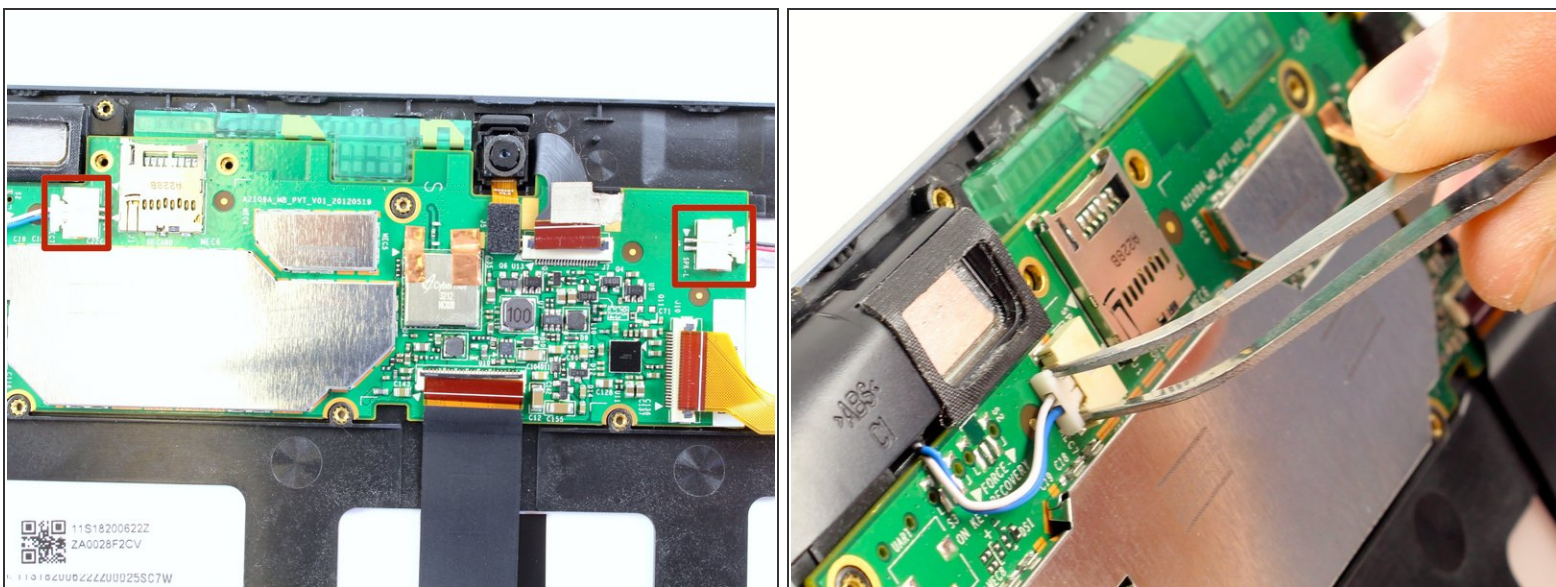
- Remove two black 3mm Phillips #00 screws.
- Remove three silver 1.8 mm Phillips #00 screws.

Step 7



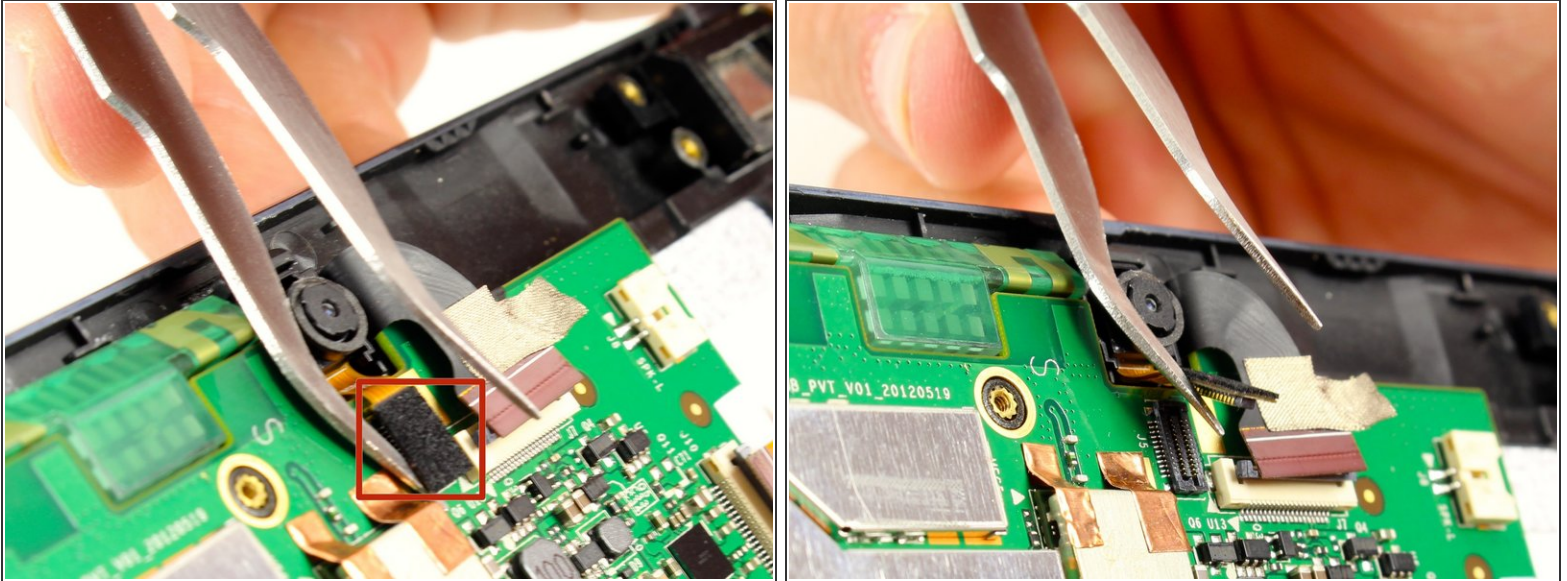
- Use tweezers to flip up the small black plastic locks on all four connections.
- Carefully remove each of the exposed ribbons.

Step 8



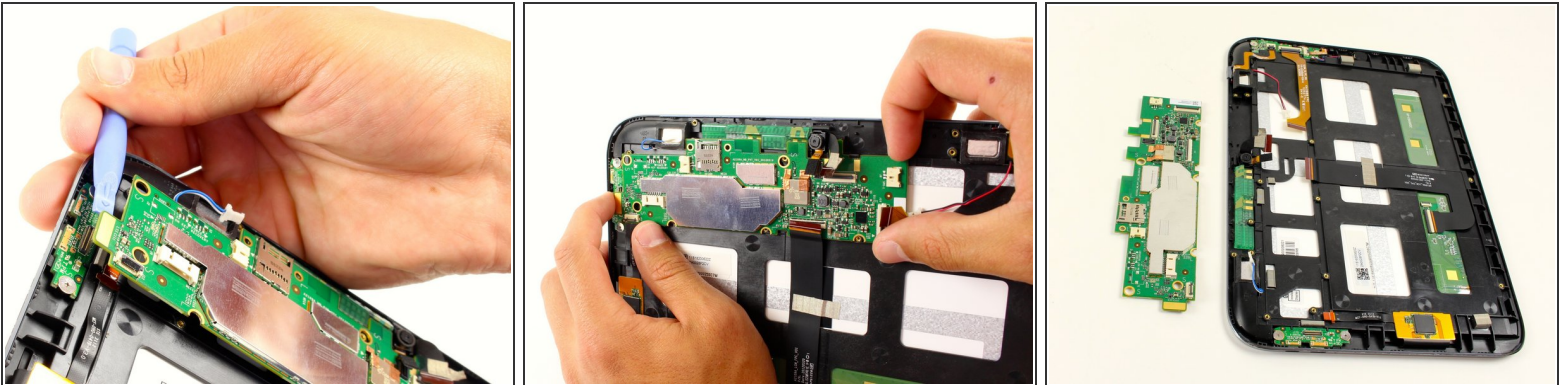
- Disconnect the two speaker connectors by pinching them with tweezers and sliding them out from the system board housing.

Step 9



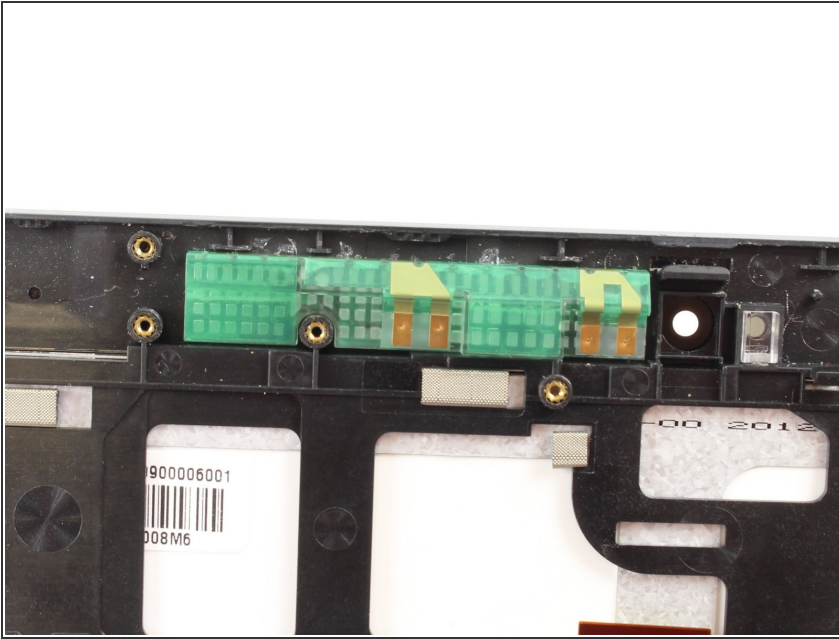
- Use tweezers or your finger nail to disconnect the camera attachment by flipping up the black rectangular connector.

Step 10



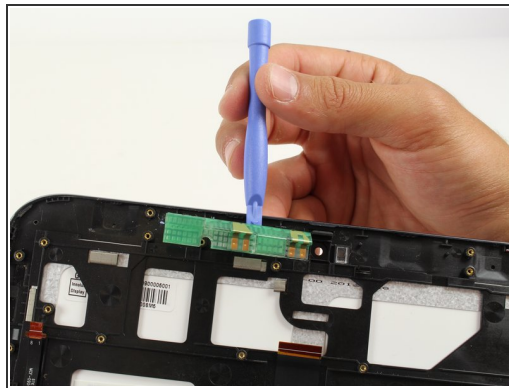
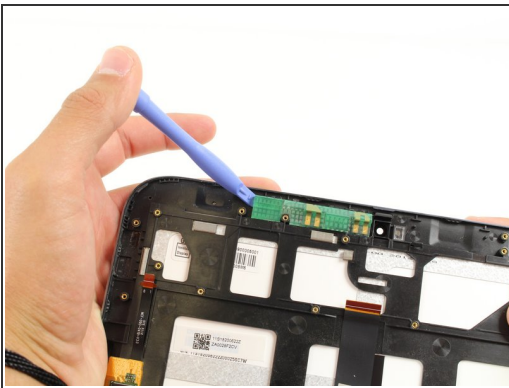
- Disconnect the HDMI connection with the system board
- Use a plastic opening tool to pry up the system board, and you will hear a pop as it comes free.
- Slide out the system board from its housing tab on the upper right corner.
- Pull the board slowly away from the tab, and it will pop out.

Step 11 — WIFI/GPS Antenna



- Once the system board has been removed, you can access the WIFI/GPS antenna.

Step 12



- Insert the blue prying tool at the corner of the antenna. Pry up slowly, and move it across the antenna.
- ⓘ There is an adhesive holding the antenna in place, so it may take a little bit of force and movement to take off the antenna.
- The antenna falls out easily once fully pried out.

To reassemble your device, follow these instructions in reverse order.

This document was generated on 2020-03-29 06:19:25 PM (MST).

