



# Lenovo IdeaTab S2109A-F Battery Replacement

This will guide you through the process of removing and replacing the Lenovo IdeaTab S2109A-F Battery.

Written By: Caelen



---

## INTRODUCTION

If your Lenovo IdeaTab is not holding a charge it may be time for your battery to be replaced. This repair guide is the first step for all repairs on your IdeaTab S2109A-F.

In this guide, you will be removing the following:

1. Backcover
2. Battery

Prepare your required tools, a new battery for your tablet, and set aside about 10 to 15 minutes to complete the task.



### TOOLS:

- [iFixit Opening Tools](#) (1)
-

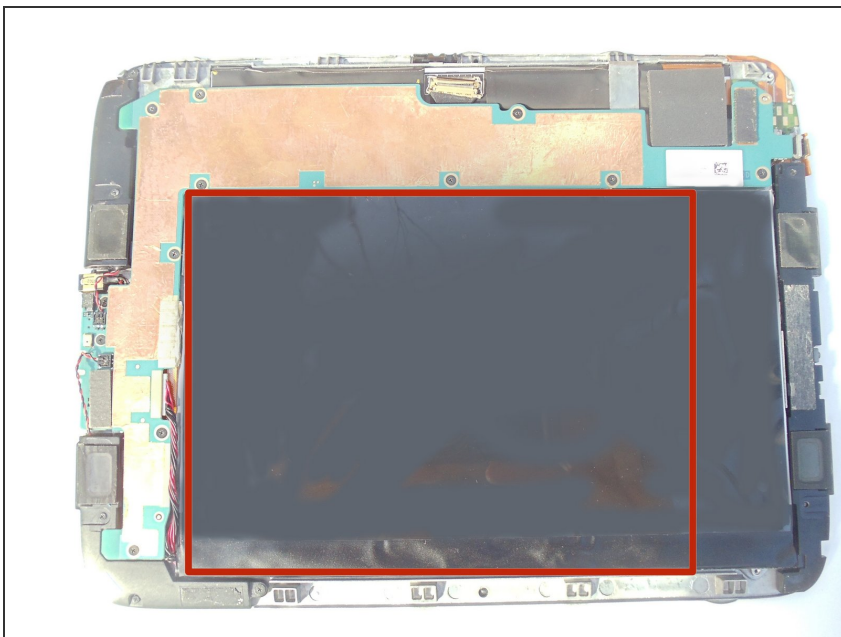
## Step 1 — Removing the Cover



**!** Make sure that the tablet is powered off before beginning this procedure. It is dangerous to touch the internal components of electronics while they are still powered on.

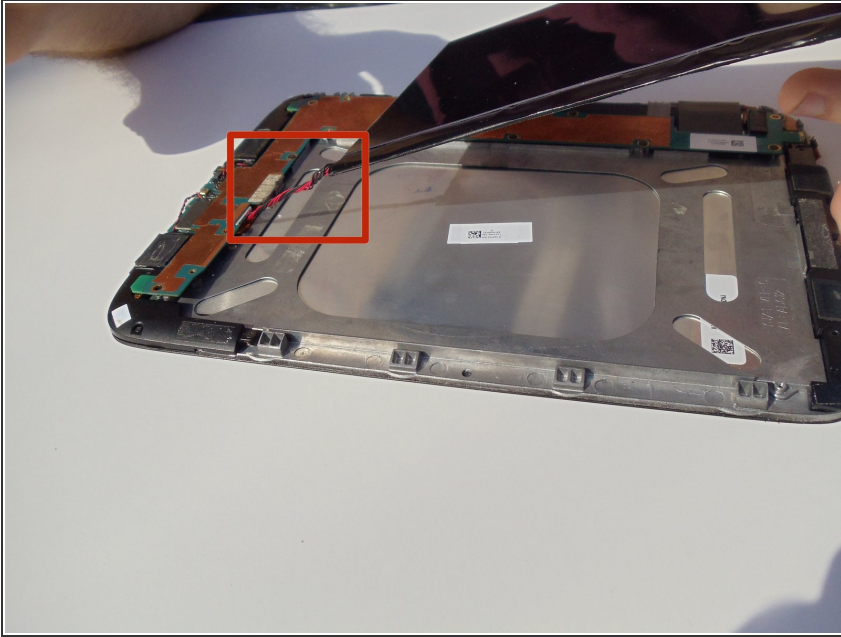
- Place the tablet on its screen and use the large plastic opening tool to remove the back cover.
- Place slight pressure on the tablet while using the tool to pry the back panel off.

## Step 2 — Finding the battery



- After the back panel is removed, all internal components should be visible.
- The battery that must be replaced is located on top of the other components.

### Step 3 — Lifting the battery



- Grab the battery and lift gently upwards. This will reveal a red and black coiled wire.
- Pull the battery gently until this cord no longer has any slack.

## Step 4 — Disconnecting the battery



- Carefully hold the battery in one hand, and use your other hand's index finger and thumb to grab the two wires nearest to their connection point.
- Use your fingers to give a firm tug to the black and red wires, but do not yank them hard enough to cause the tablet to sustain damage. Once these cables are removed, the battery is disconnected.

To reassemble your device, follow these instructions in reverse order.