



Lenovo IdeaTab S2109A-F Camera Replacement

This will guide you through the process of removing and replacing the Lenovo IdeaTab S2109A-F Camera.

Written By: Timothy



INTRODUCTION

If your camera image is distorted or cracked this guide will help you replace the camera with a new one.

Please review battery guide before continuing with this guide.

In this guide, you will be removing the following:

1. Camera



TOOLS:

- [iFixit Opening Tools](#) (1)
 - [Phillips #00 Screwdriver](#) (1)
-

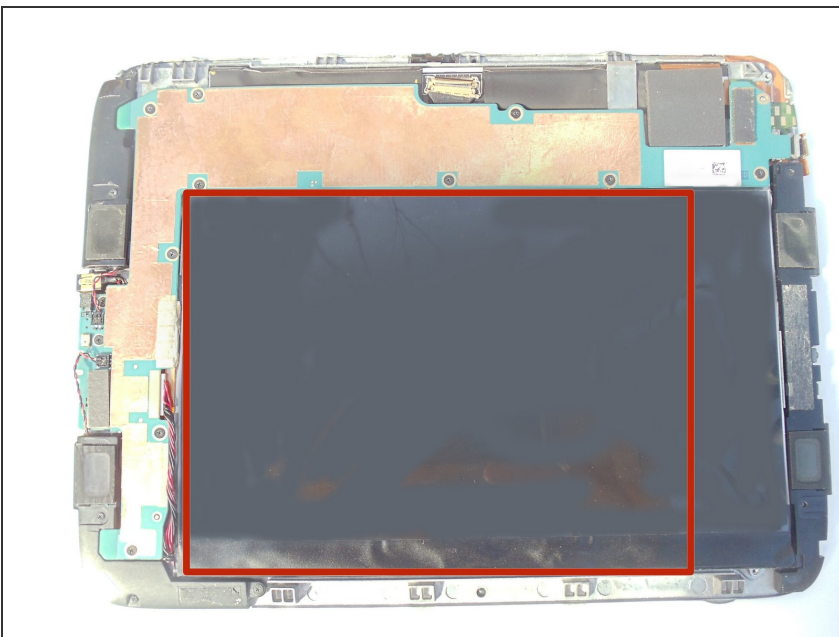
Step 1 — Removing the Cover



! Make sure that the tablet is powered off before beginning this procedure. It is dangerous to touch the internal components of electronics while they are still powered on.

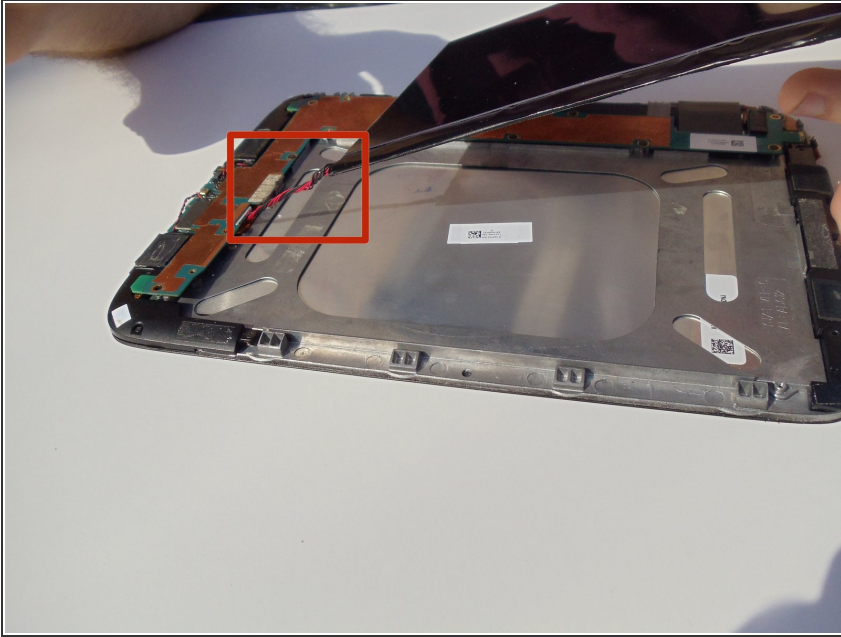
- Place the tablet on its screen and use the large plastic opening tool to remove the back cover.
- Place slight pressure on the tablet while using the tool to pry the back panel off.

Step 2 — Finding the battery



- After the back panel is removed, all internal components should be visible.
- The battery that must be replaced is located on top of the other components.

Step 3 — Lifting the battery



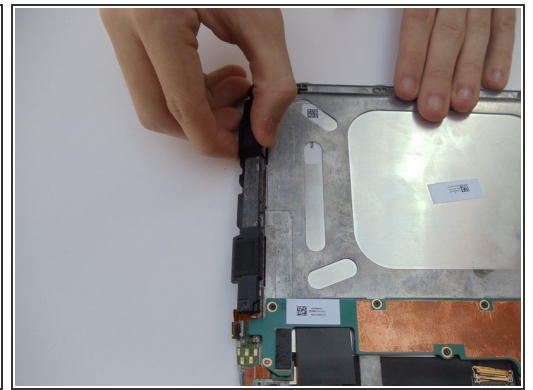
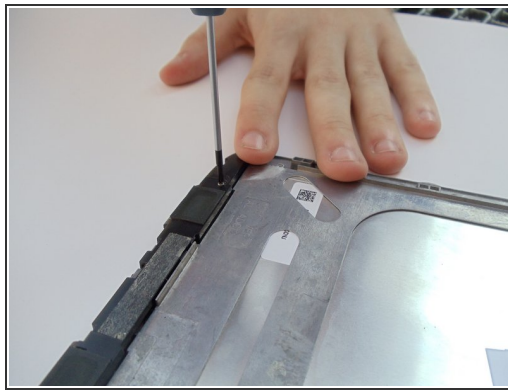
- Grab the battery and lift gently upwards. This will reveal a red and black coiled wire.
- Pull the battery gently until this cord no longer has any slack.

Step 4 — Disconnecting the battery



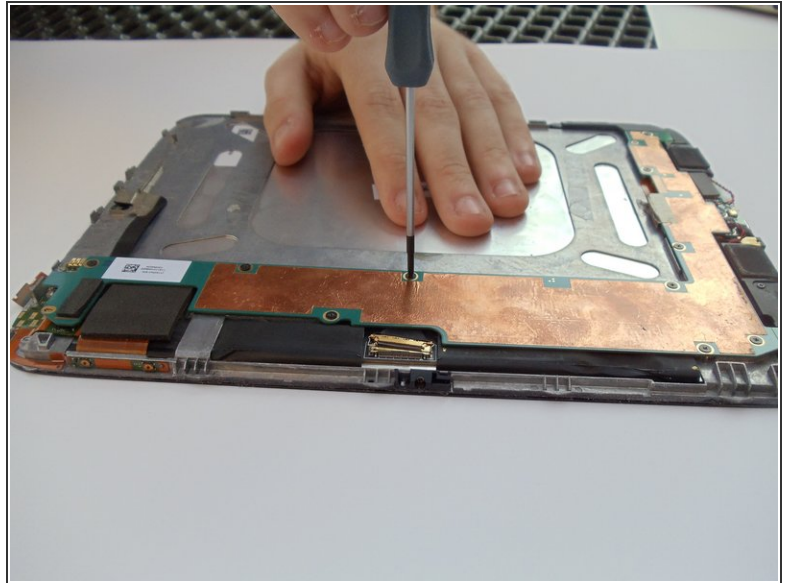
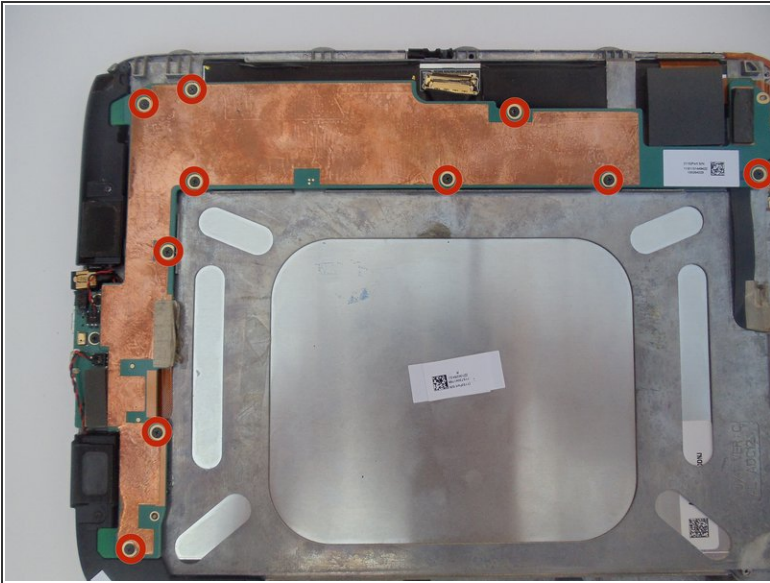
- Carefully hold the battery in one hand, and use your other hand's index finger and thumb to grab the two wires nearest to their connection point.
- Use your fingers to give a firm tug to the black and red wires, but do not yank them hard enough to cause the tablet to sustain damage. Once these cables are removed, the battery is disconnected.

Step 5 — Removing the Camera Housing



- Using a PH00 screwdriver, remove the two 4mm PH00 screws located on the right side of the housing.

Step 6 — Unscrewing the system board



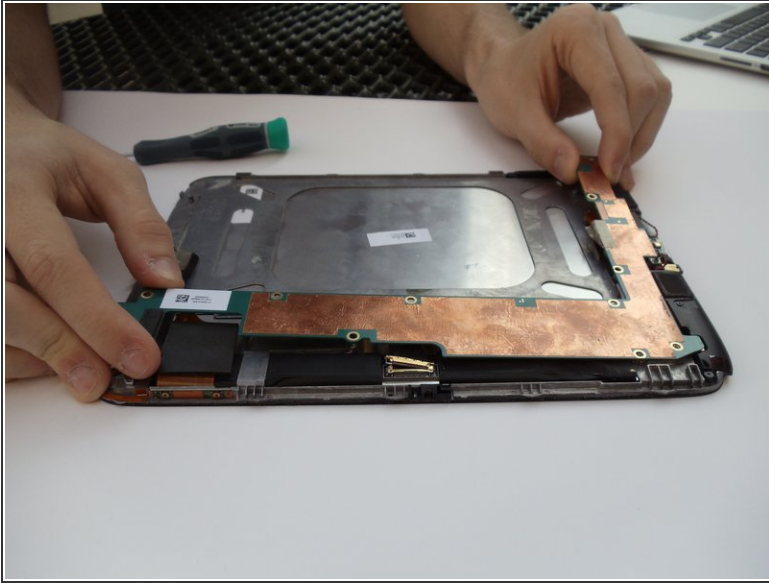
- Locate the long, L-shaped system board; copper foil runs most of its length.
- The system board is secured by 10, 2mm screws. Remove these with a PH00 screwdriver.

Step 7 — Disconnecting the system board



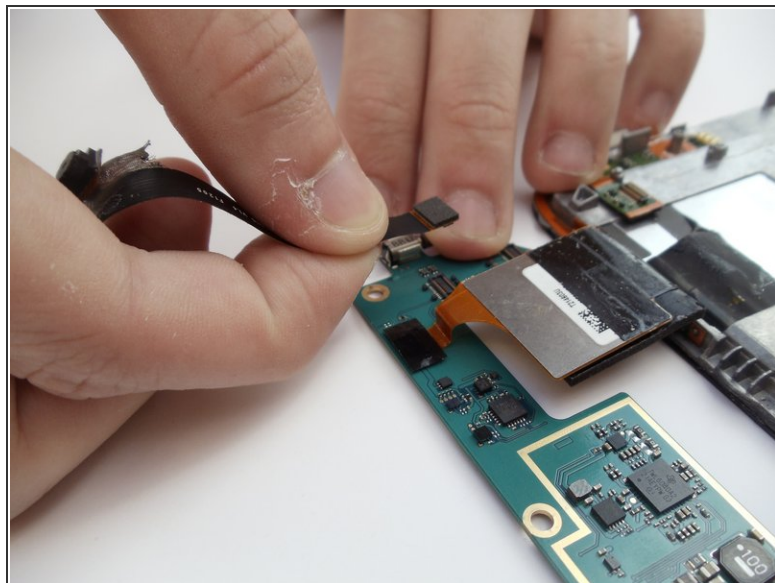
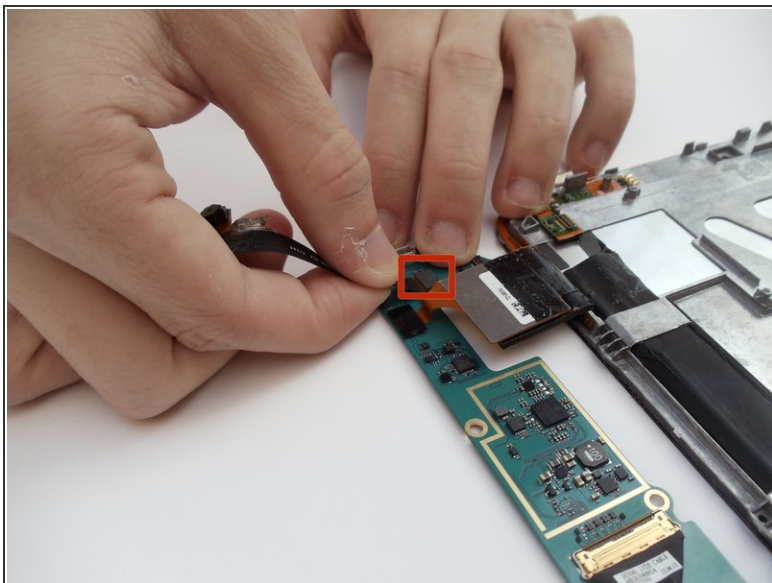
- Flip the central latch with a large opening tool to expose a gold connector.
- Gently pull the gold connector using the latch.

Step 8 — Moving the System board



- Pull up on the L shaped board.
- This will disconnect two connectors at the top and bottom of the board.

Step 9 — Disconnecting the camera



- With the camera still be attached to the moved system board. Grab the camera connection with your index finger and thumb.
- Disconnect the camera by gently pulling on this wire.

To reassemble your device, follow these instructions in reverse order.