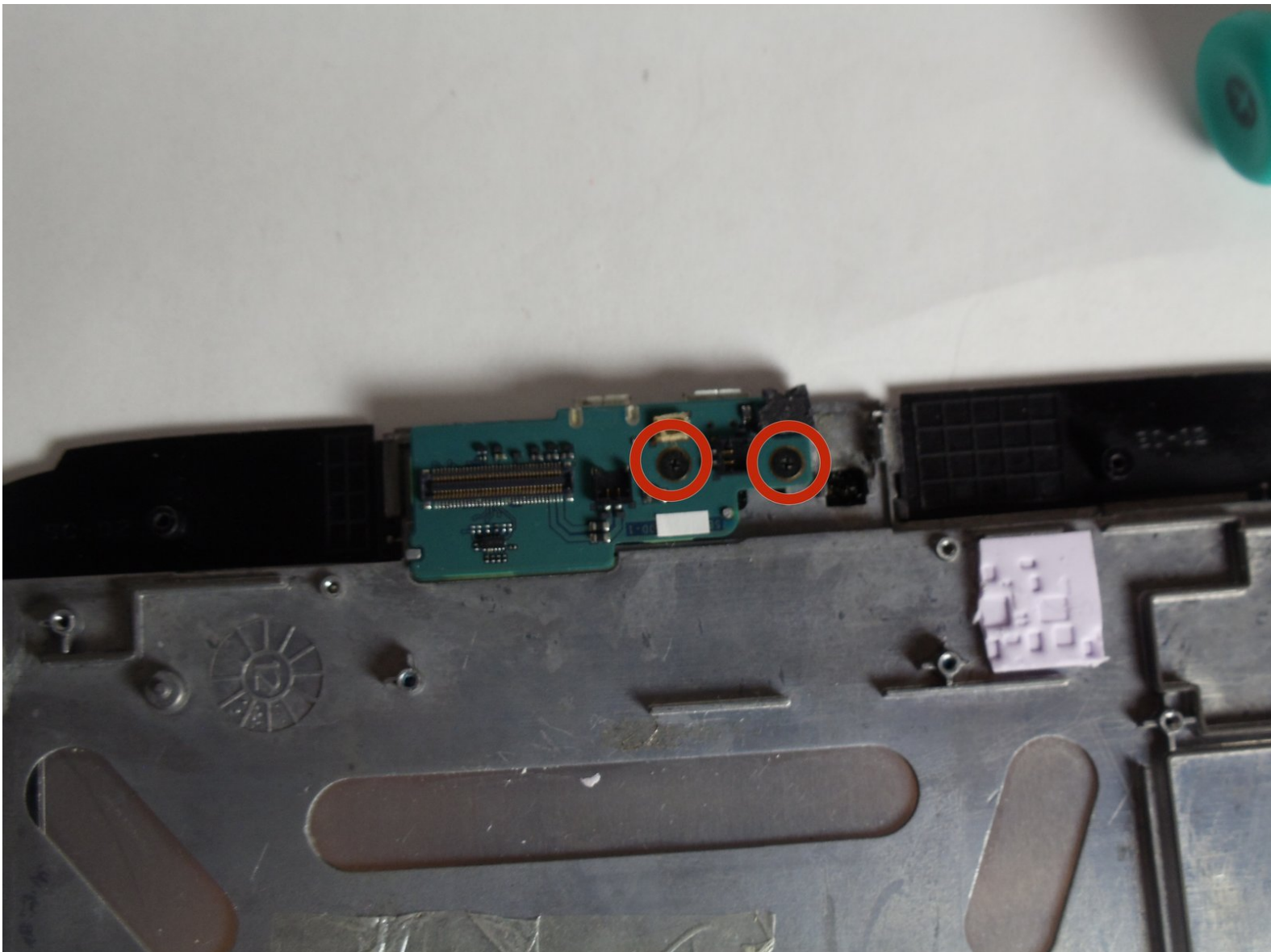




# Lenovo IdeaTab S2109A-F I/O Panel Replacement

In this guide we will go through the process of removing and replacing the I/O panel where the SD card reader and USB ports are located.

Written By: Timothy



---

## INTRODUCTION

If you are inserting a micro SD card and your device does not recognize the SD card is inside, this guide will help you replace you broken reader.

In this guide we will remove:

1. I/O Panel



### TOOLS:

- [Phillips #00 Screwdriver](#) (1)
  - [iFixit Opening Tools](#) (1)
  - [T4 Torx Screwdriver](#) (1)
-

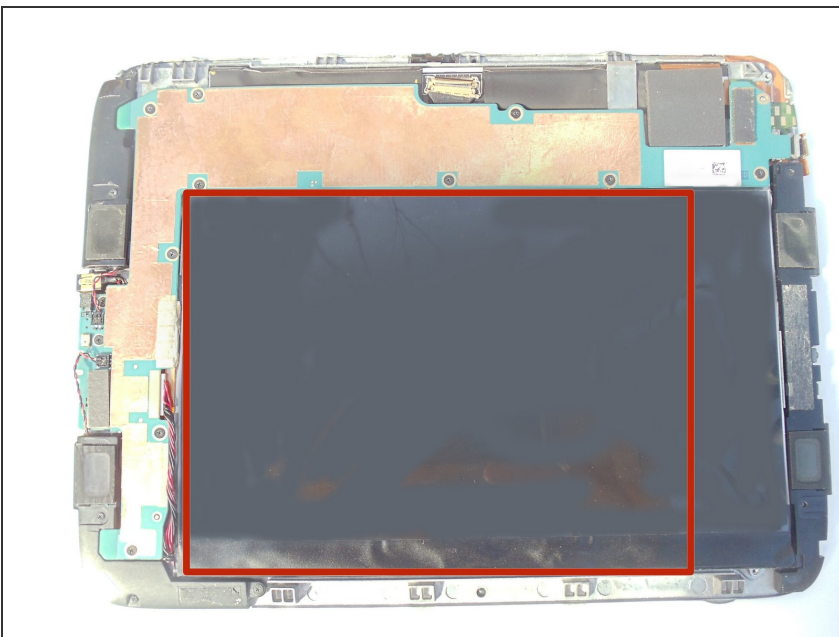
## Step 1 — Removing the Cover



**!** Make sure that the tablet is powered off before beginning this procedure. It is dangerous to touch the internal components of electronics while they are still powered on.

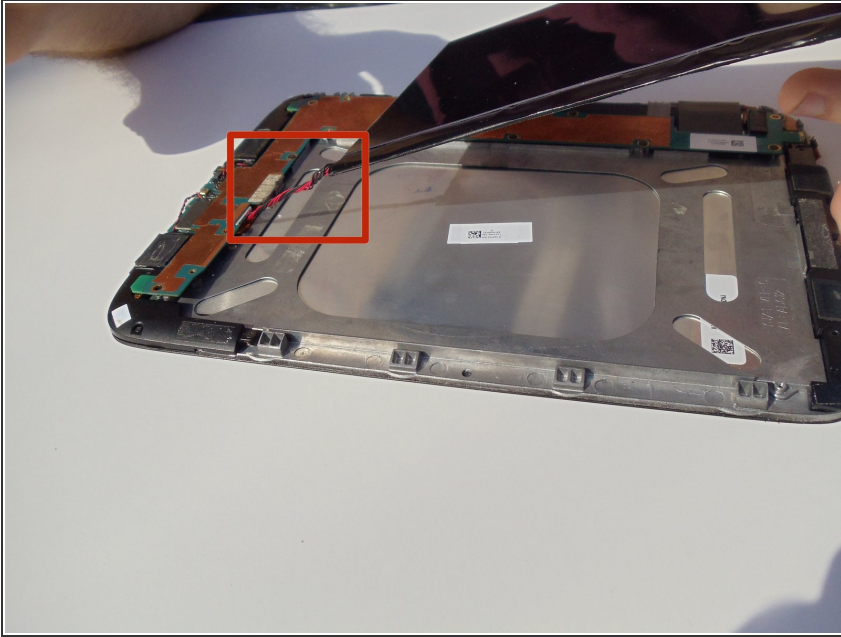
- Place the tablet on its screen and use the large plastic opening tool to remove the back cover.
- Place slight pressure on the tablet while using the tool to pry the back panel off.

## Step 2 — Finding the battery



- After the back panel is removed, all internal components should be visible.
- The battery that must be replaced is located on top of the other components.

### Step 3 — Lifting the battery



- Grab the battery and lift gently upwards. This will reveal a red and black coiled wire.
- Pull the battery gently until this cord no longer has any slack.

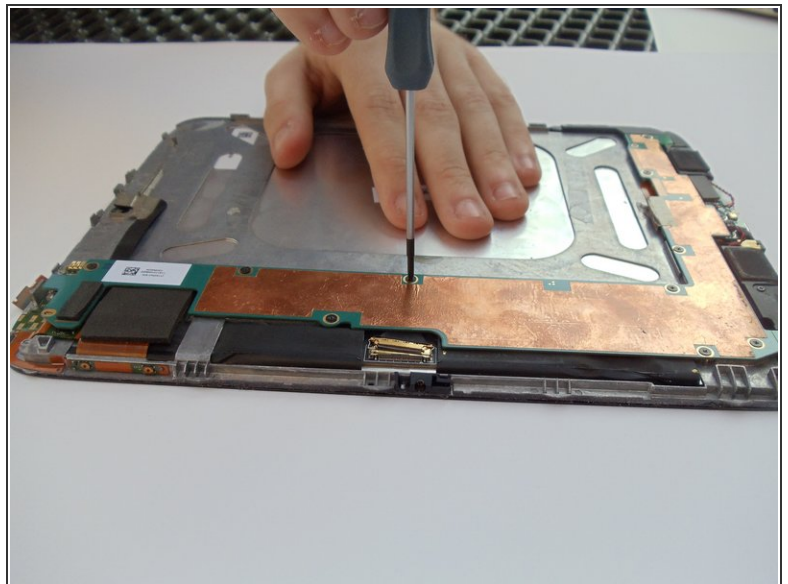
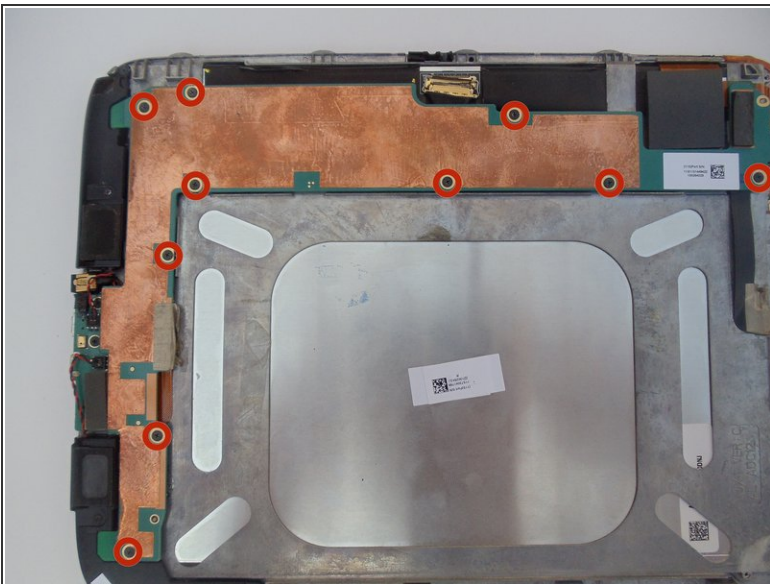


## Step 4 — Disconnecting the battery



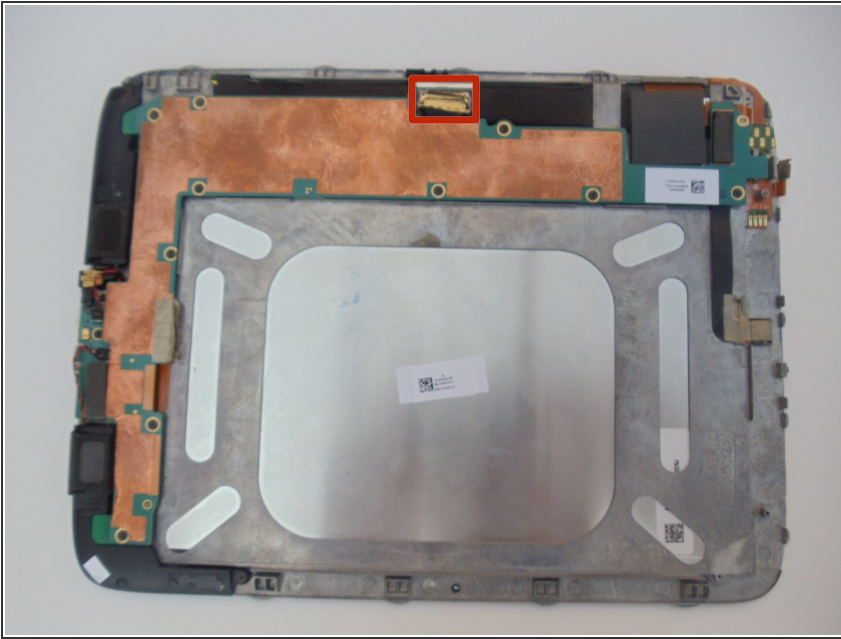
- Carefully hold the battery in one hand, and use your other hand's index finger and thumb to grab the two wires nearest to their connection point.
- Use your fingers to give a firm tug to the black and red wires, but do not yank them hard enough to cause the tablet to sustain damage. Once these cables are removed, the battery is disconnected.

## Step 5 — Unscrew the System Board



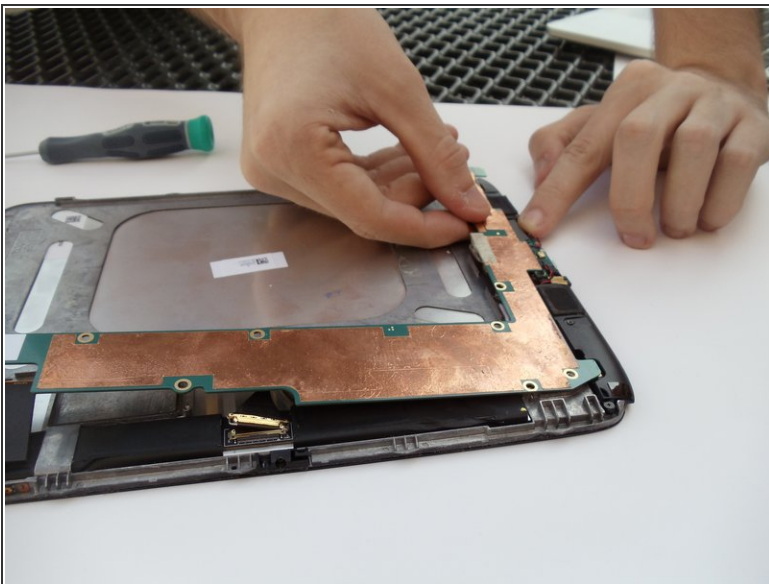
- Locate the long, L-shaped system board copper foil runs most of its length.
- Remove the 10 2mm PH00 black screws located on the edges of the system board with a PH00 screwdriver.

## Step 6 — Disconnecting the system board



- First Disconnect the gold connector by lifting the latch on it up with the plastic opening tool.
- pulling it loose using the latch.

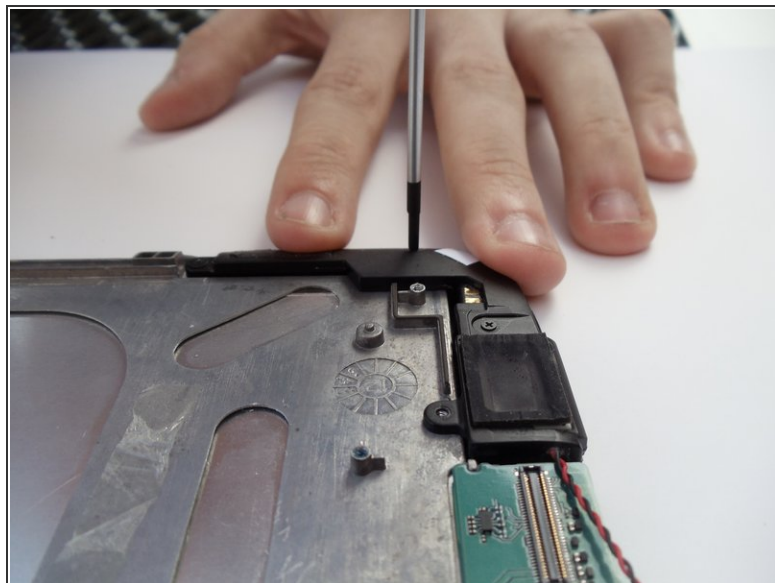
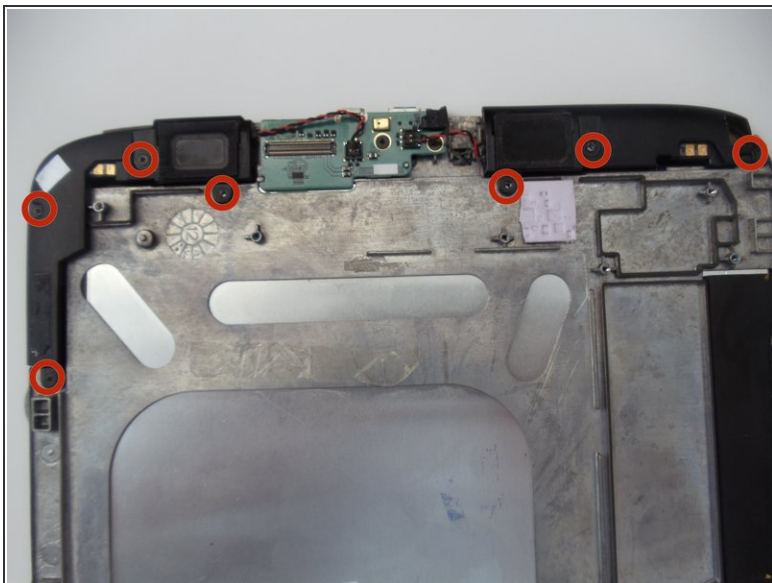
## Step 7 — Moving the system board.



- Pull up on the L shaped board.
- The one bottom and one top connection points should disconnect.

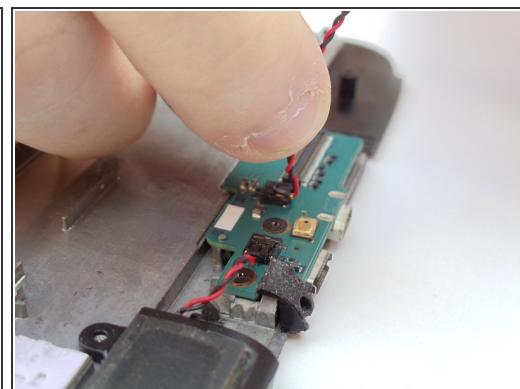
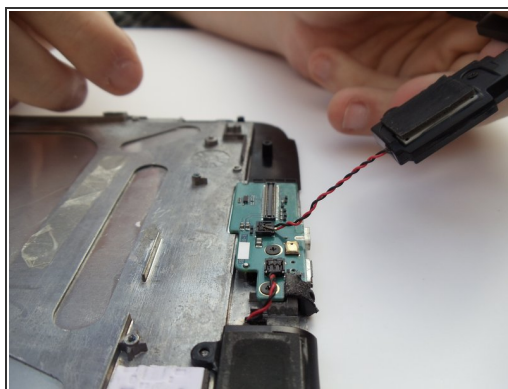
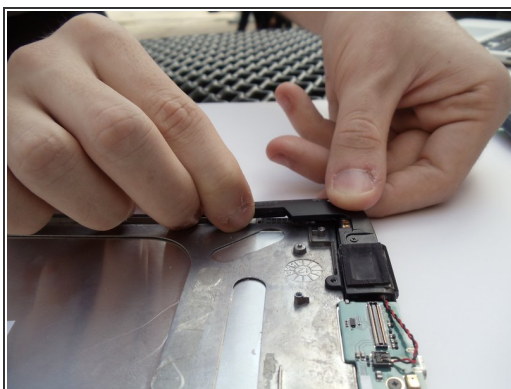


## Step 8 — Unscrewing the speakers



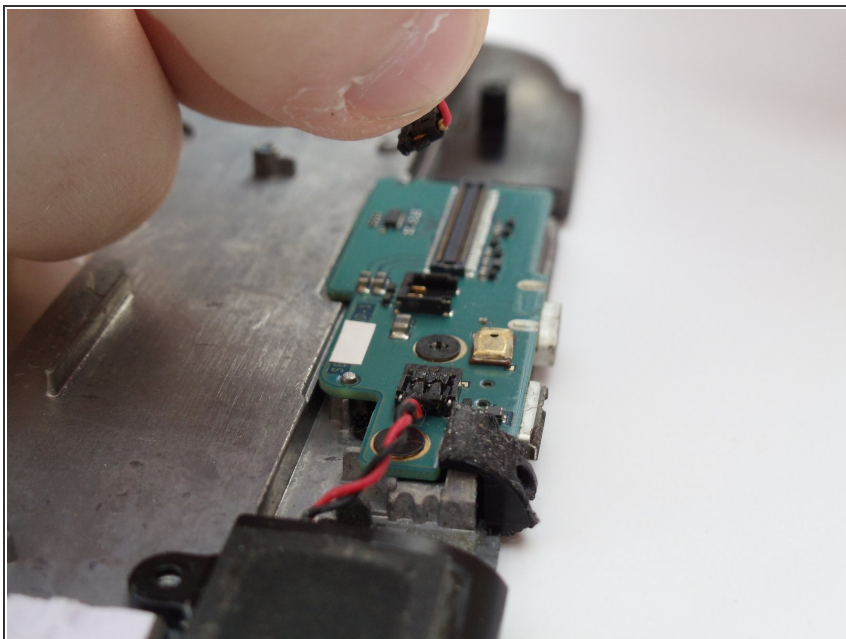
- Unscrew the 7 2mm PH00 black screws connecting the speakers using the PH00 screwdriver.

## Step 9 — Moving the speakers



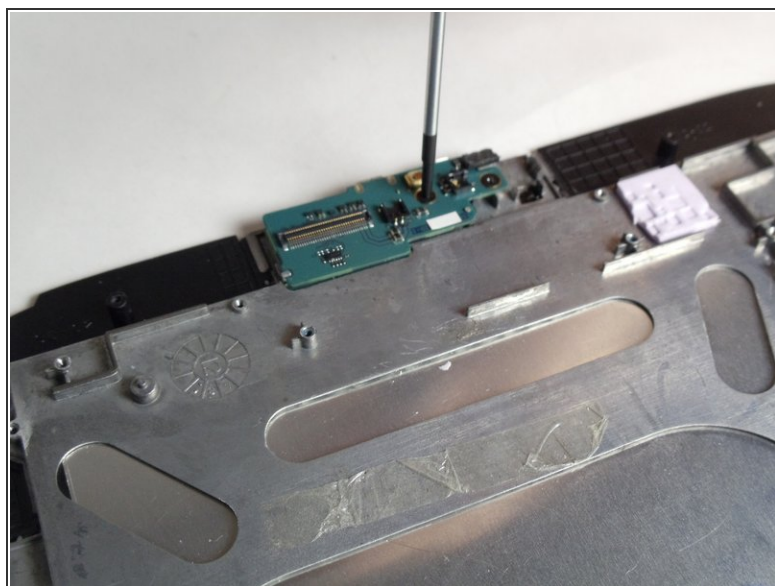
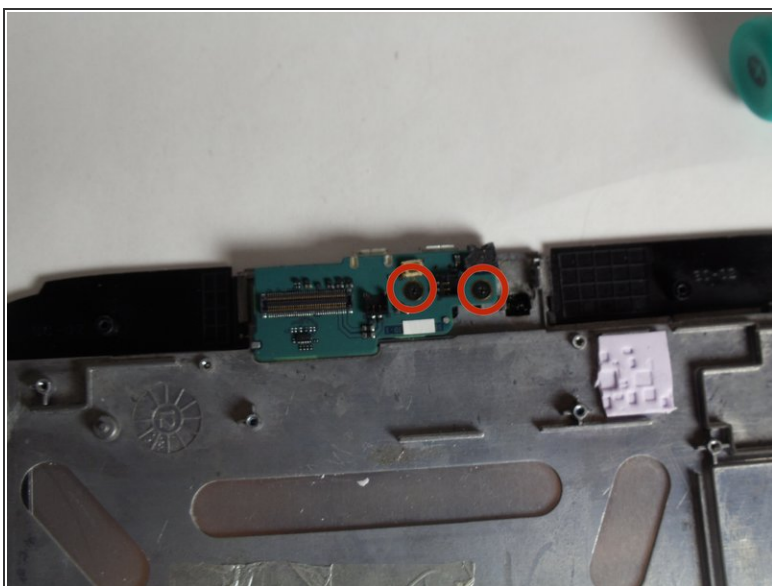
- Lift the disconnected speakers from their resting position.
- Grab the red and black cable with your index finger and thumb.

## Step 10 — Disconnecting the speakers



- Pull up on the connection to disconnect the speakers.

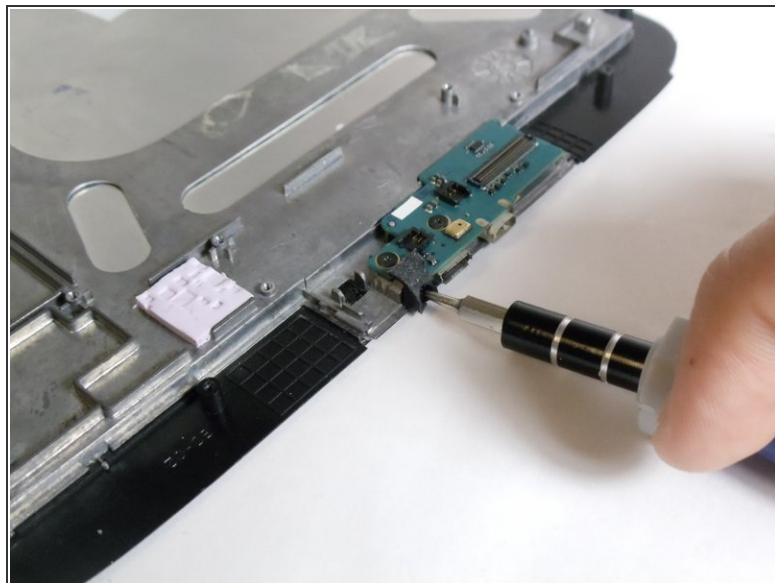
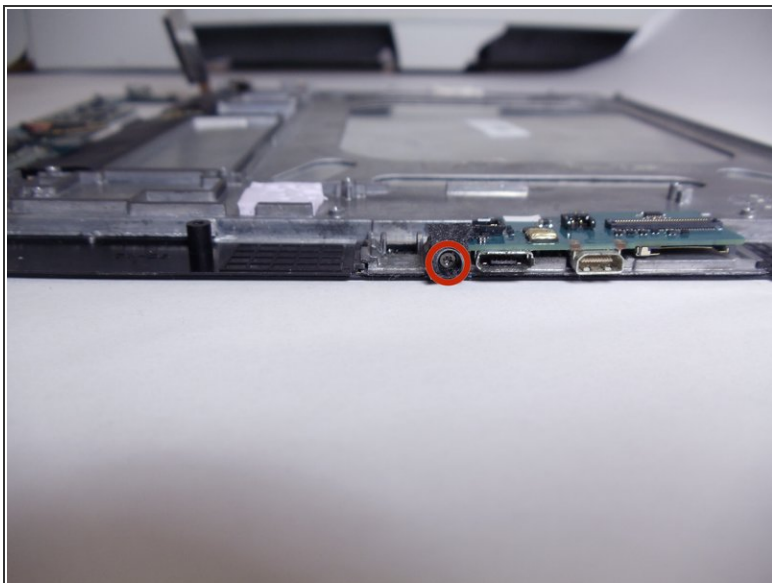
## Step 11 — Removing I/O Panel Screws



- Remove the two top 2mm PH00 screws using the PH00 screwdriver.

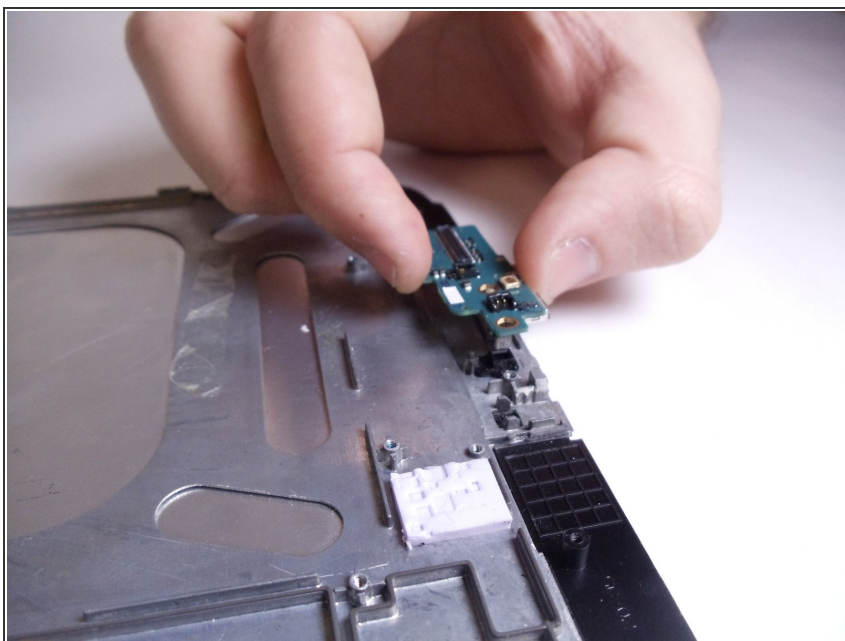


## Step 12 — Removing the torx screw



- Remove the 2mm Torx T-4 screw on the front use a Torx T-4 screwdriver from the iFixit tool kit.

## Step 13 — Removing the I/O Panel



- To remove the I/O Panel just lift up on the panel and it should come out without any effort.

To reassemble your device, follow these instructions in reverse order.