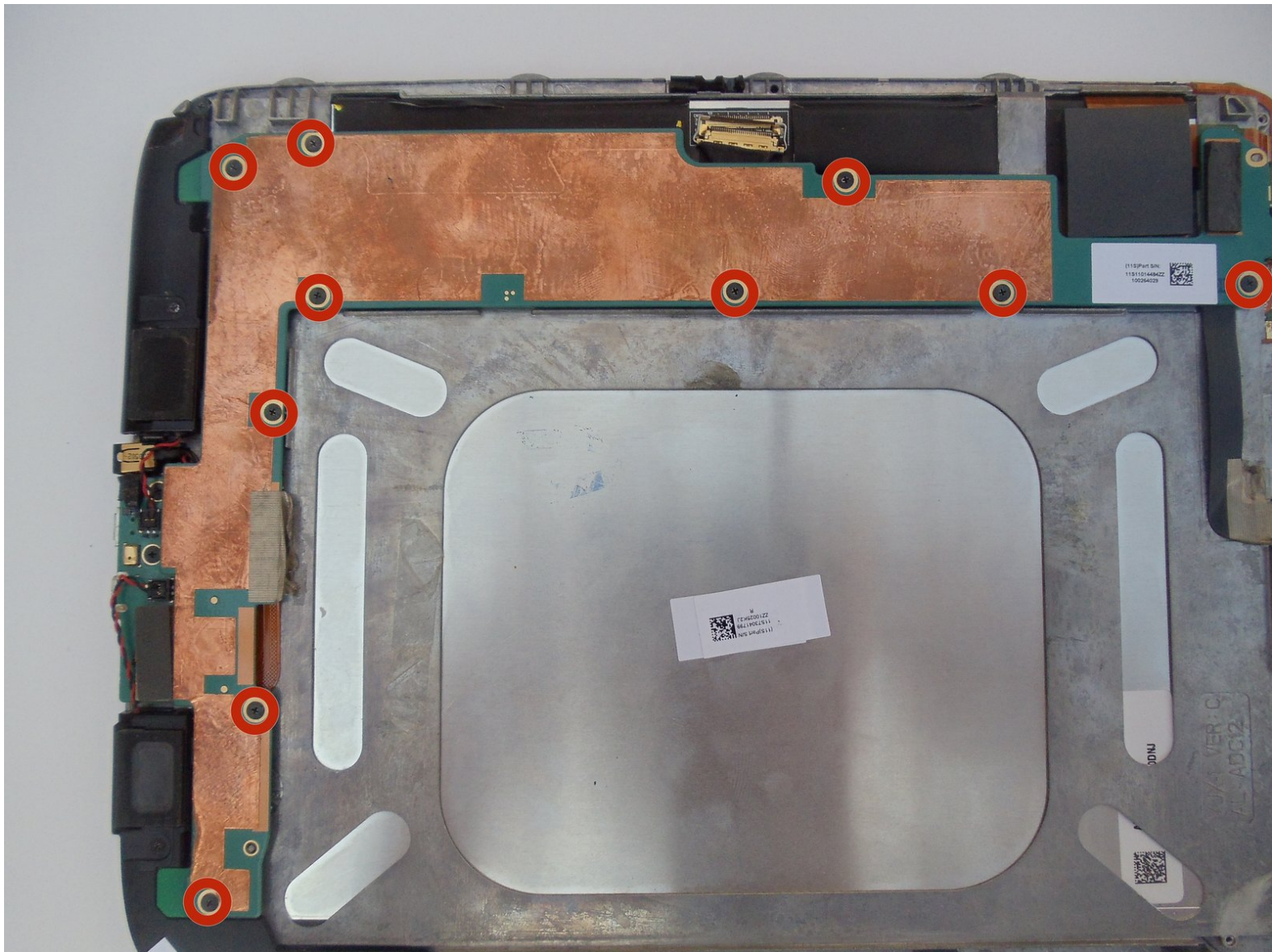




Lenovo IdeaTab S2109A-F Speaker Replacement

This will guide you through the process of removing and replacing the Lenovo IdeaTab S2109A-F Speakers.

Written By: Caelen



This document was generated on 2019-09-24 03:25:14 PM (MST).

INTRODUCTION

If your Lenovo IdeaTab is not holding a charge it may be time for your battery to be replaced. This repair guide is the first step for all repairs on your IdeaTab S2109A-F.

In this guide, you will be removing the following:

#Speakers

Prepare your required tools, a new battery for your tablet, and set aside about 10 to 15 minutes to complete the task.



TOOLS:

- [Phillips #00 Screwdriver](#) (1)
 - [iFixit Opening Tools](#) (1)
-

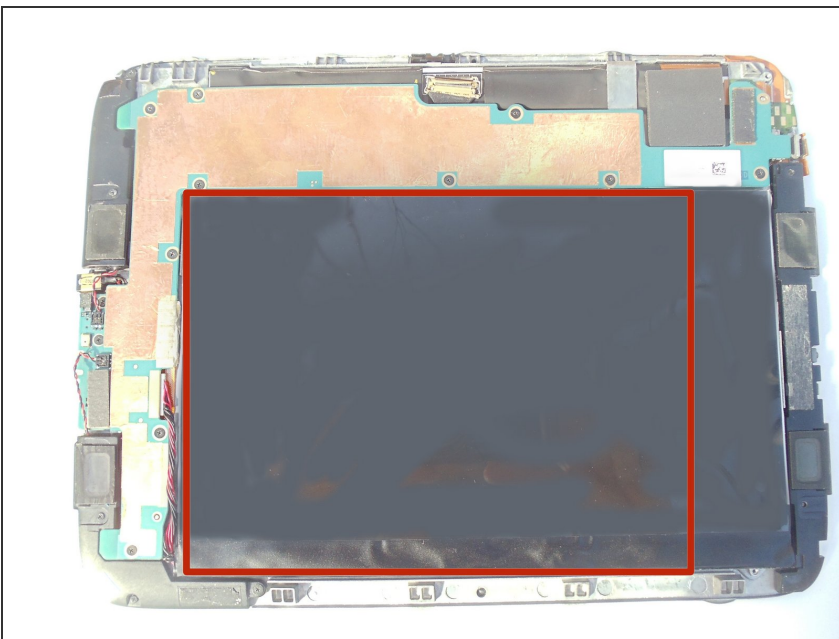
Step 1 — Removing the Cover



! Make sure that the tablet is powered off before beginning this procedure. It is dangerous to touch the internal components of electronics while they are still powered on.

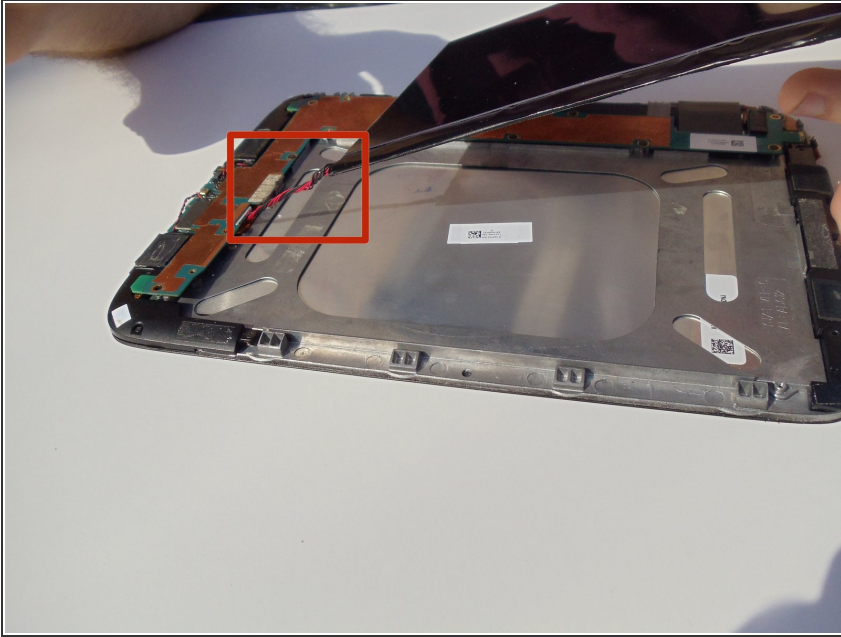
- Place the tablet on its screen and use the large plastic opening tool to remove the back cover.
- Place slight pressure on the tablet while using the tool to pry the back panel off.

Step 2 — Finding the battery



- After the back panel is removed, all internal components should be visible.
- The battery that must be replaced is located on top of the other components.

Step 3 — Lifting the battery



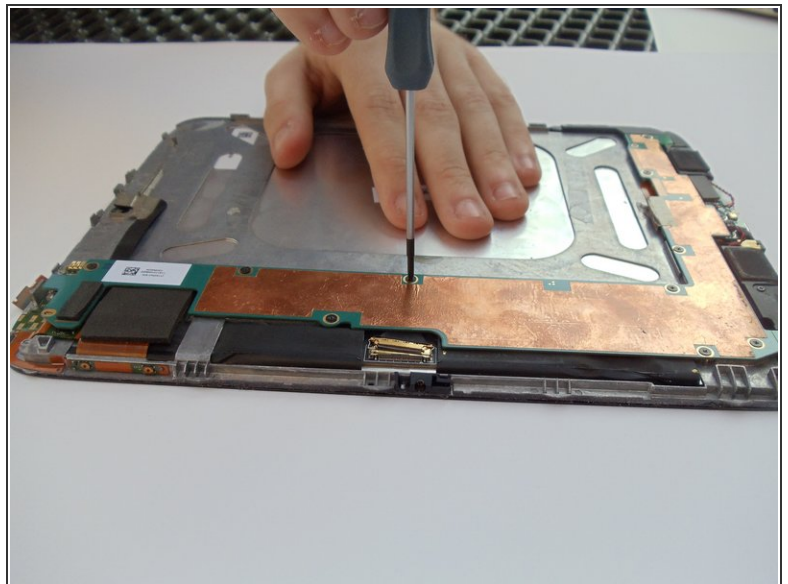
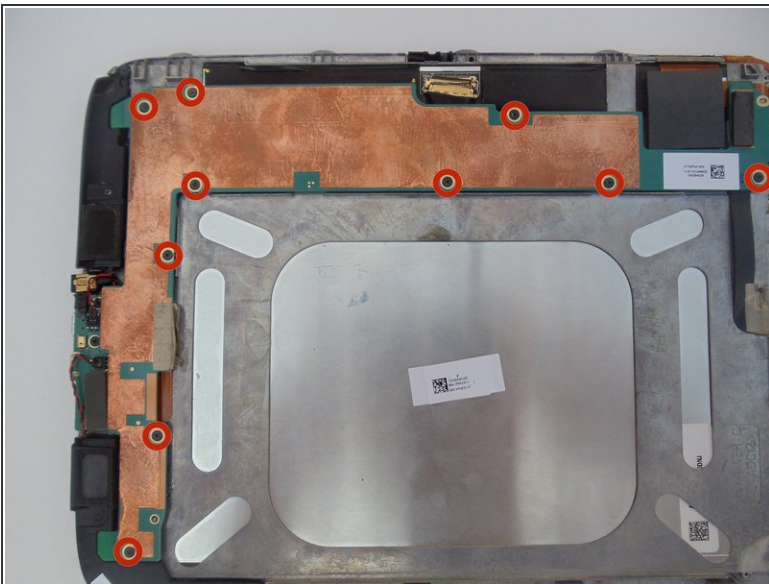
- Grab the battery and lift gently upwards. This will reveal a red and black coiled wire.
- Pull the battery gently until this cord no longer has any slack.

Step 4 — Disconnecting the battery



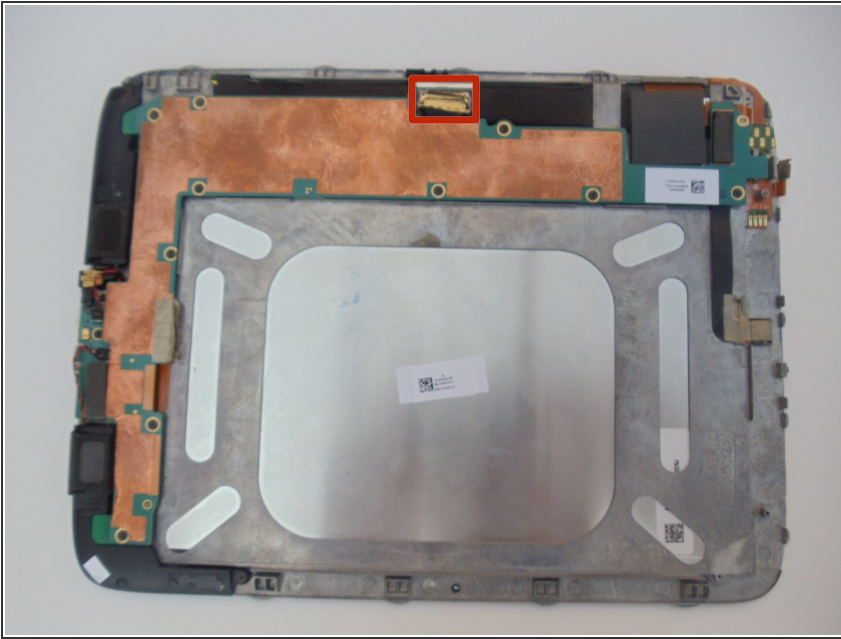
- Carefully hold the battery in one hand, and use your other hand's index finger and thumb to grab the two wires nearest to their connection point.
- Use your fingers to give a firm tug to the black and red wires, but do not yank them hard enough to cause the tablet to sustain damage. Once these cables are removed, the battery is disconnected.

Step 5 — Unscrew the System Board



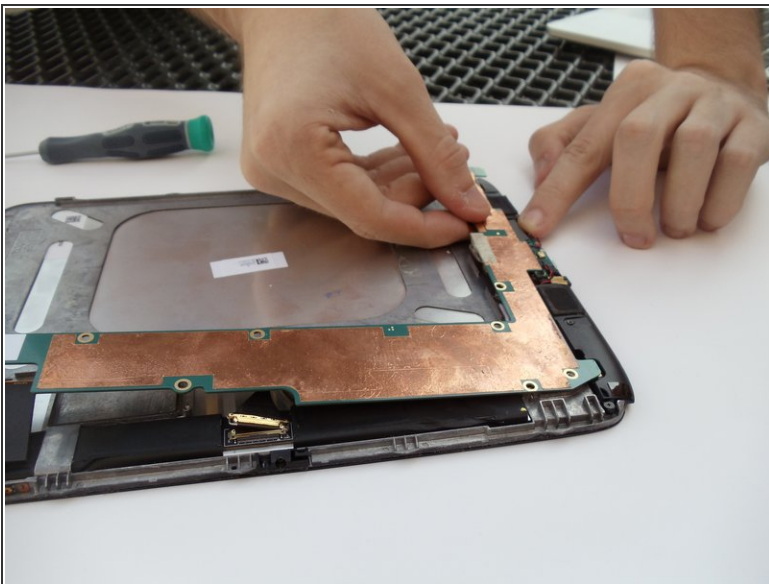
- Locate the long, L-shaped system board copper foil runs most of its length.
- Remove the 10 2mm PH00 black screws located on the edges of the system board with a PH00 screwdriver.

Step 6 — Disconnecting the system board



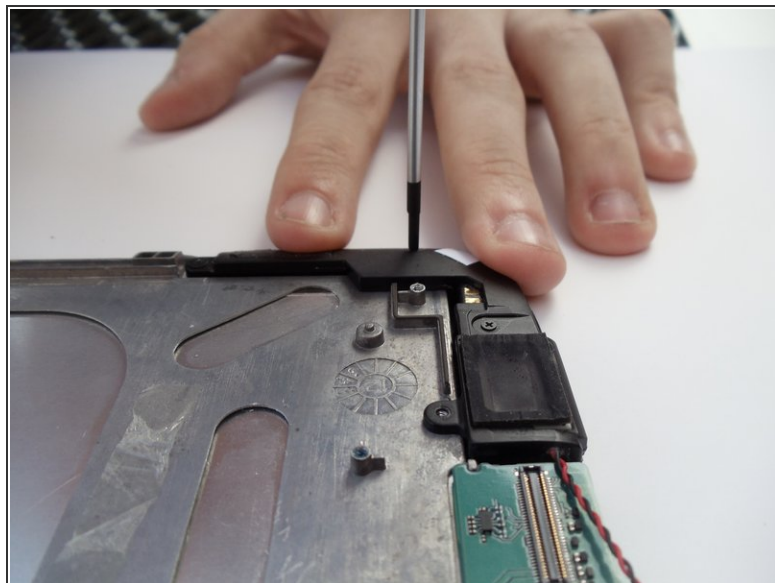
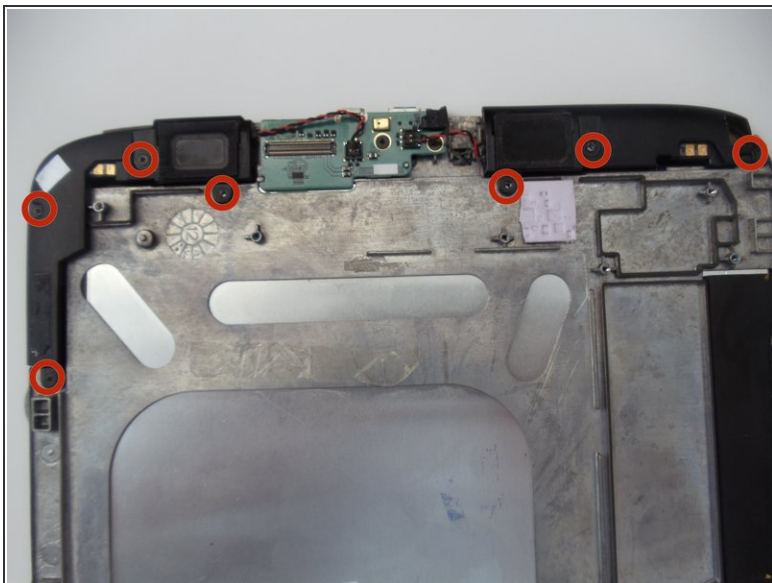
- First Disconnect the gold connector by lifting the latch on it up with the plastic opening tool.
- pulling it loose using the latch.

Step 7 — Moving the system board.



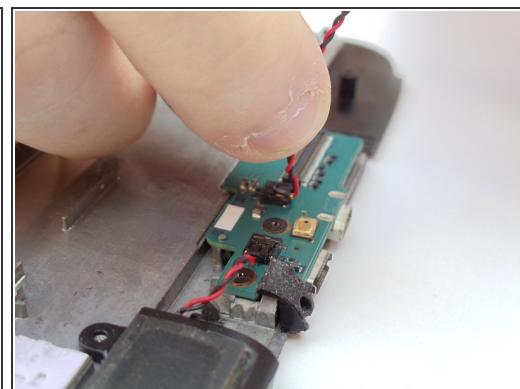
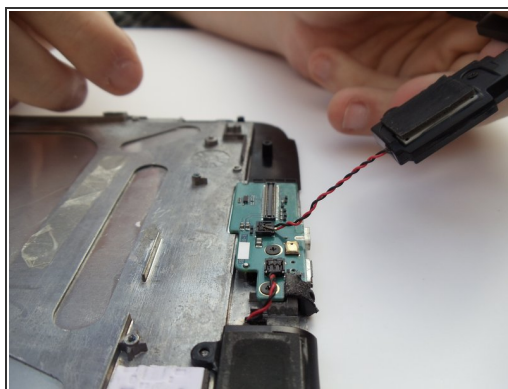
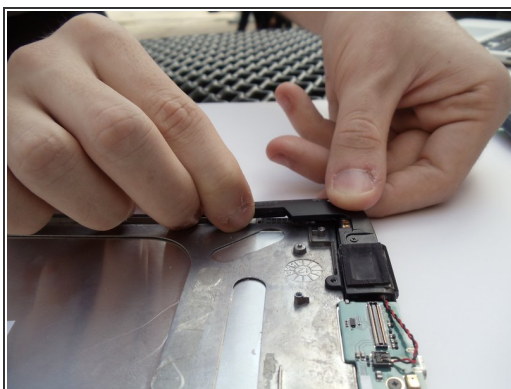
- Pull up on the L shaped board.
- The one bottom and one top connection points should disconnect.

Step 8 — Unscrewing the speakers



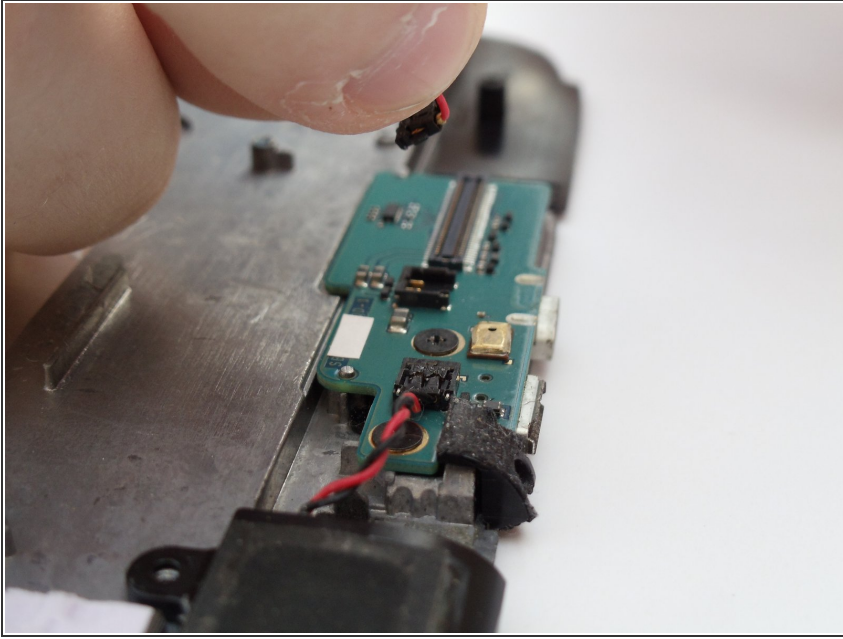
- Unscrew the 7 2mm PH00 black screws connecting the speakers using the PH00 screwdriver.

Step 9 — Moving the speakers



- Lift the disconnected speakers from their resting position.
- Grab the red and black cable with your index finger and thumb.

Step 10 — Disconnecting the speakers



- Pull up on the connection to disconnect the speakers.

To reassemble your device, follow these instructions in reverse order.