



Lenovo IdeaTab S2109A-F System Board Replacement

In this guide we will go through the process of removing and replacing the system board.

Written By: Timothy



INTRODUCTION

A faulty system board can lead to a myriad of performance issues.

In this guide we will remove:

1. System Board



TOOLS:

- [iFixit Opening Tools](#) (1)
 - [Phillips #00 Screwdriver](#) (1)
-

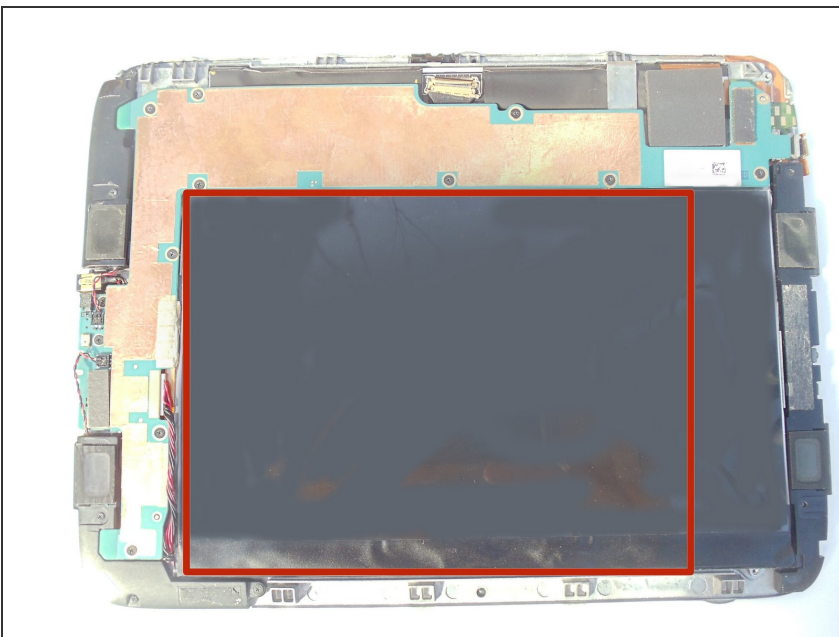
Step 1 — Removing the Cover



! Make sure that the tablet is powered off before beginning this procedure. It is dangerous to touch the internal components of electronics while they are still powered on.

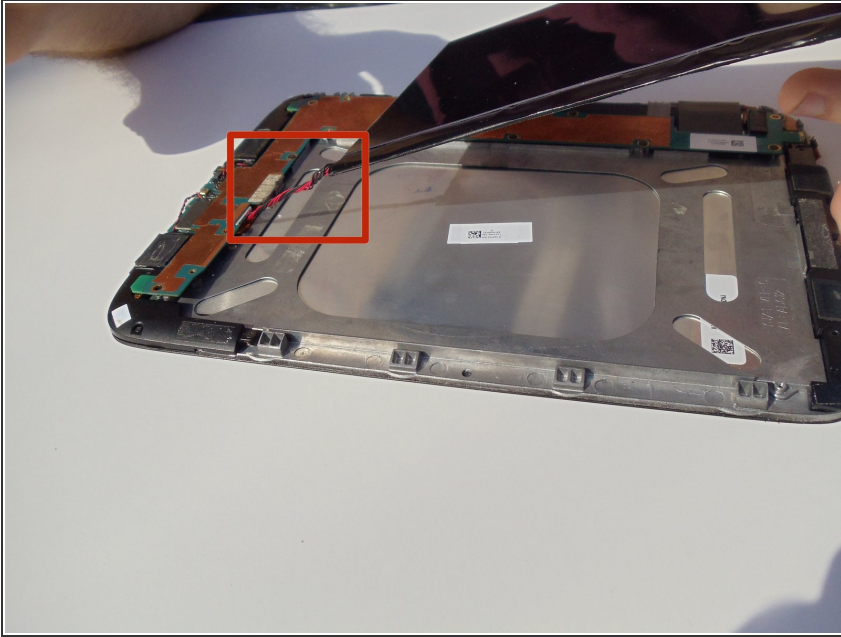
- Place the tablet on its screen and use the large plastic opening tool to remove the back cover.
- Place slight pressure on the tablet while using the tool to pry the back panel off.

Step 2 — Finding the battery



- After the back panel is removed, all internal components should be visible.
- The battery that must be replaced is located on top of the other components.

Step 3 — Lifting the battery



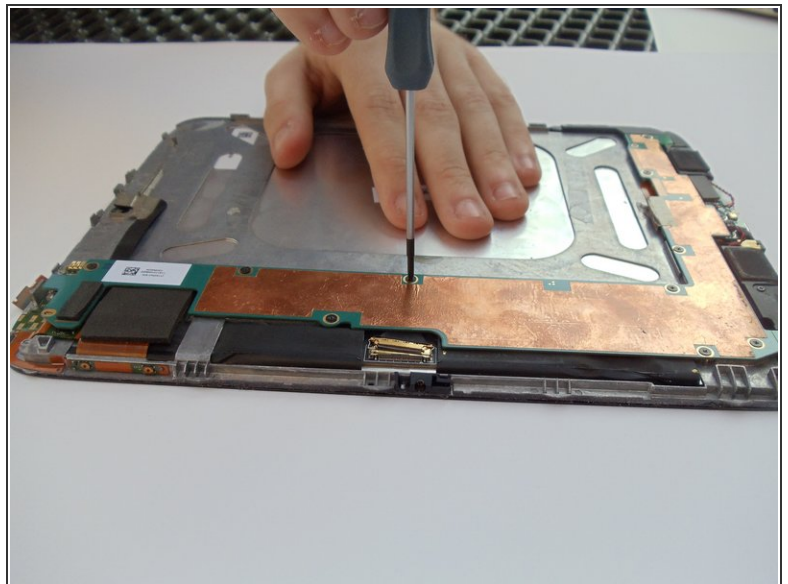
- Grab the battery and lift gently upwards. This will reveal a red and black coiled wire.
- Pull the battery gently until this cord no longer has any slack.

Step 4 — Disconnecting the battery



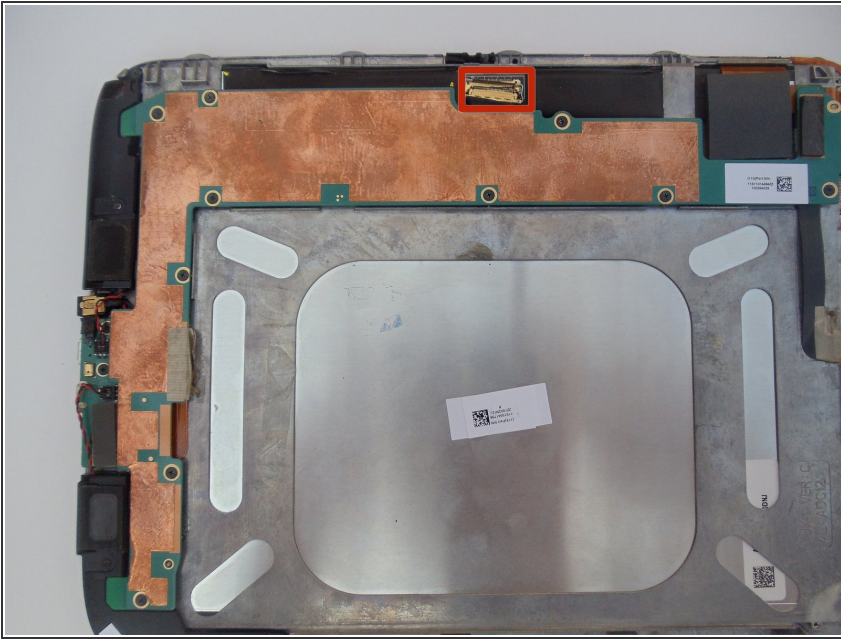
- Carefully hold the battery in one hand, and use your other hand's index finger and thumb to grab the two wires nearest to their connection point.
- Use your fingers to give a firm tug to the black and red wires, but do not yank them hard enough to cause the tablet to sustain damage. Once these cables are removed, the battery is disconnected.

Step 5 — Unscrewing the System Board



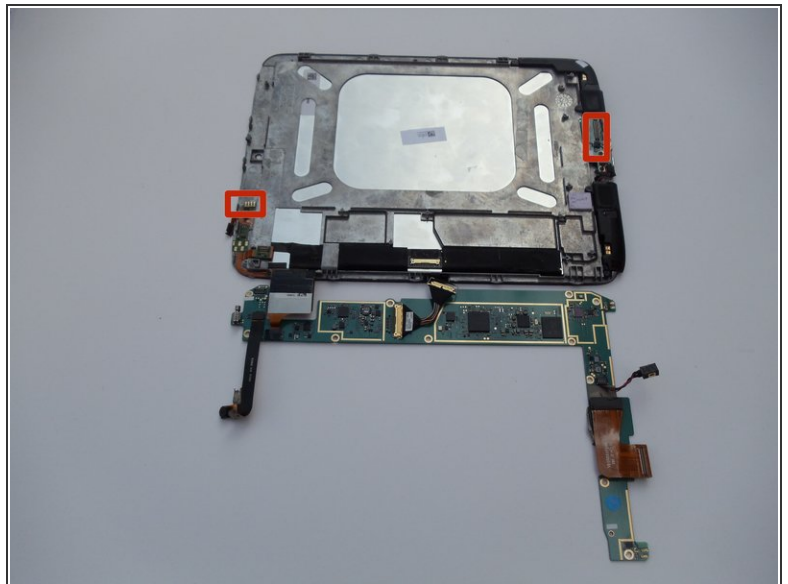
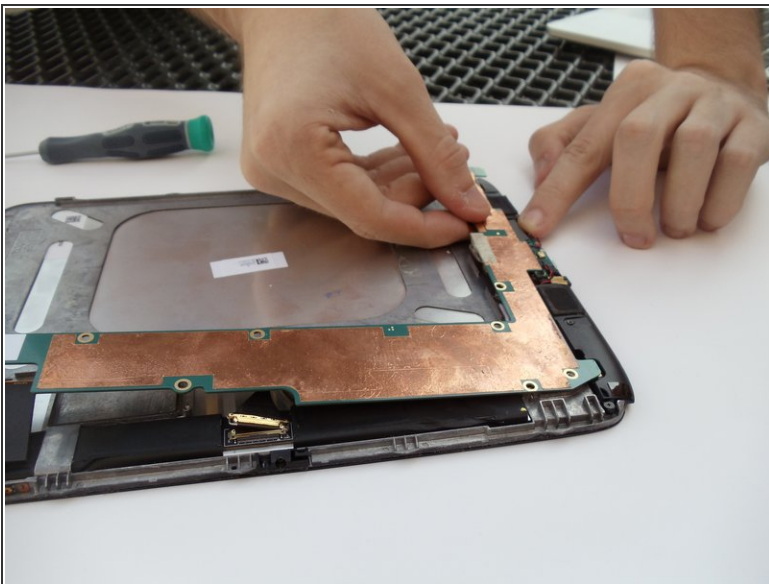
- Locate the long, L-shaped system board; copper foil runs most of its length.
- Remove the 10 2mm PH00 black screws located on the edges of the system board using a PH00 Screwdriver.

Step 6 — Disconnecting the First Connection to the System Board



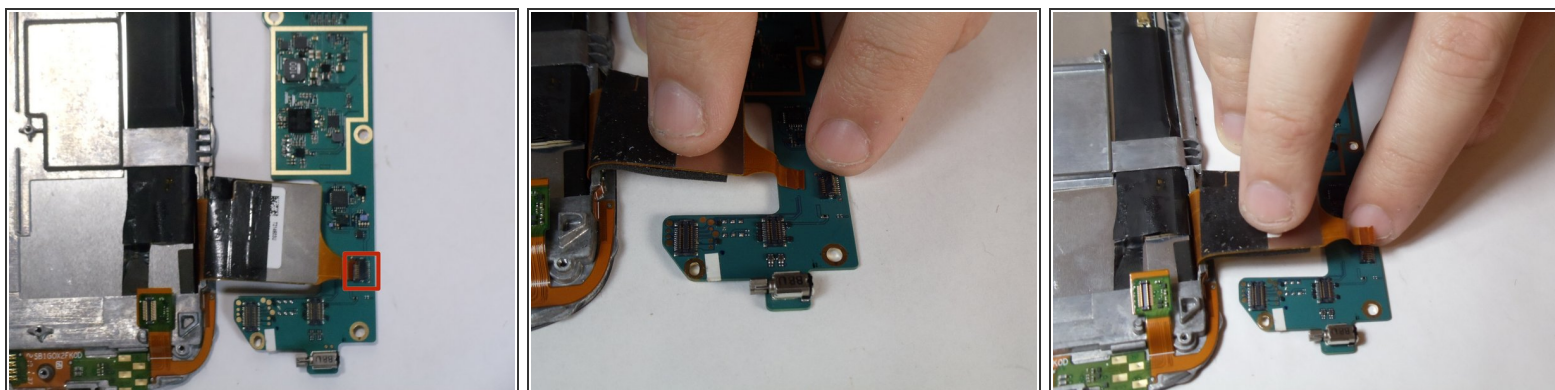
- First Disconnect the gold connector by lifting the latch on it up and pulling it loose using the latch to pull.

Step 7 — Disconnecting the next three connections of the System Board



- As you lift the board up you will notice two more connections, one near the power switch and one on the I/O Panel.
- Remove each one with a minimal amount of upward pulling force as you flip the board over.

Step 8 — Disconnecting the final connector of the System Board.



- To disconnect the system board there is one last connection.
- Lift up the back latch on this connection and the orange ribbon should slide right out without any effort thus disconnecting the board.

To reassemble your device, follow these instructions in reverse order.