



# Lenovo Ideapad 110S-11IBR Wi-Fi Card Replacement

step by step instructions on how to replace your Lenovo Ideapad's Wi-Fi card.

Written By: Alex Daughters



---

## INTRODUCTION

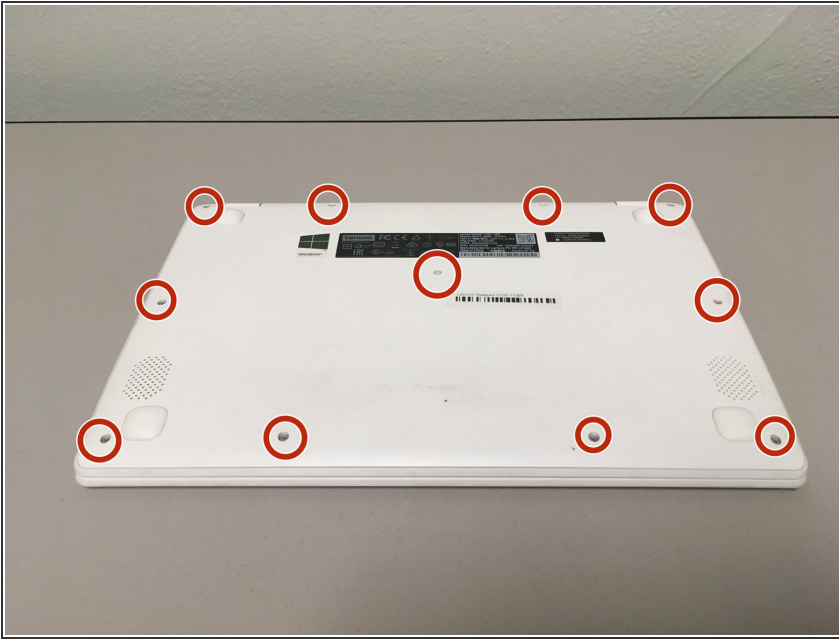
Step by step guide to replacing the Wi-Fi card in your Lenovo 110-11IBR.

---

### TOOLS:

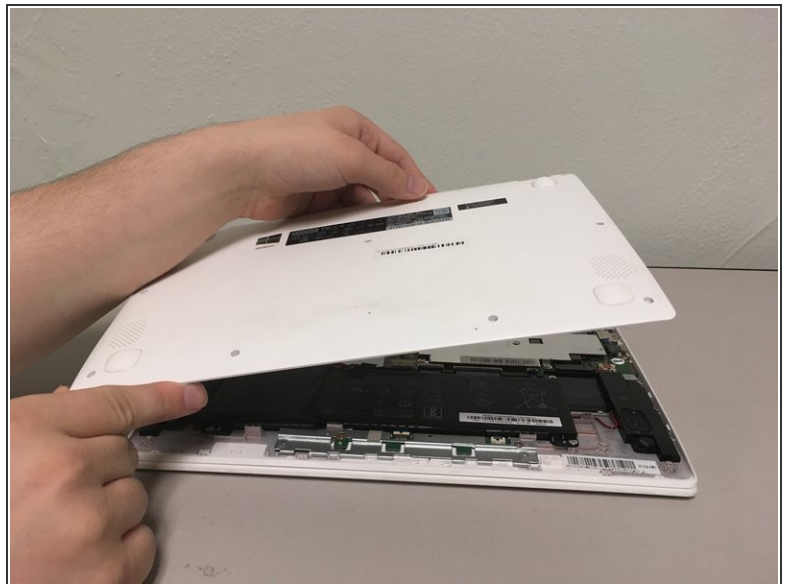
- [Phillips #00 Screwdriver](#) (1)
  - [iFixit Opening Tools](#) (1)
  - [Phillips #0 Screwdriver](#) (1)
  - [Phillips #000 Screwdriver](#) (1)
-

## Step 1 — Battery



- ⚠ Ensure that your device is completely OFF before performing this procedure.
- Unscrew the eleven 4 mm Phillips #0 screws on the bottom of the device.

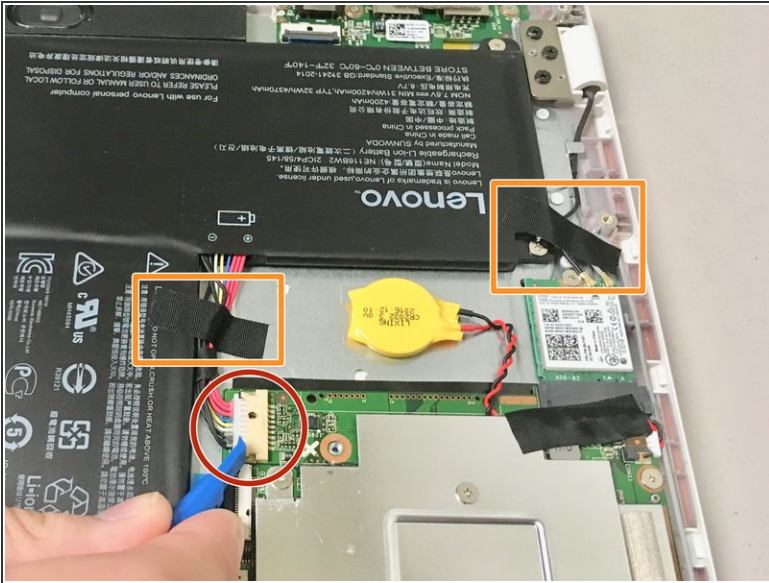
## Step 2



- Separate the back lid from the laptop using a plastic opening tool.
- Lift the back lid off of the device.

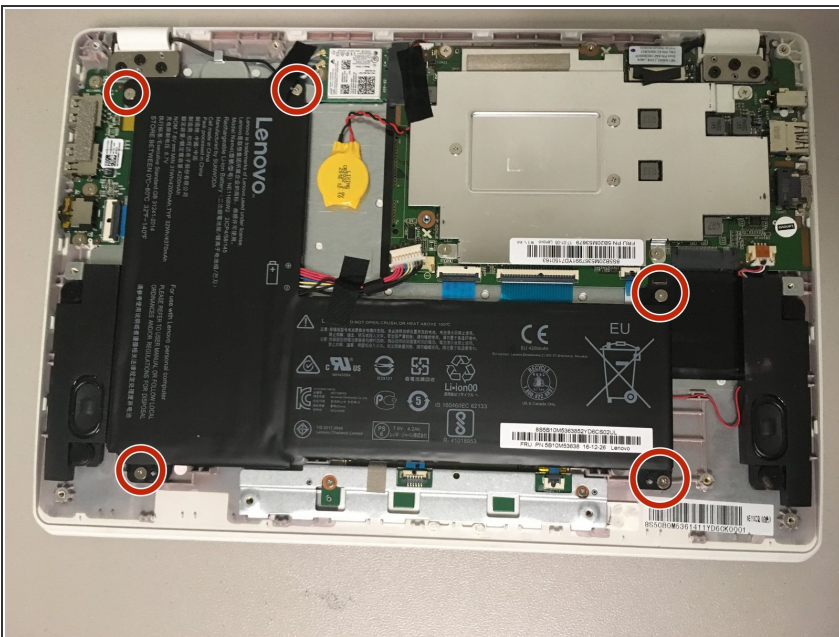


## Step 3



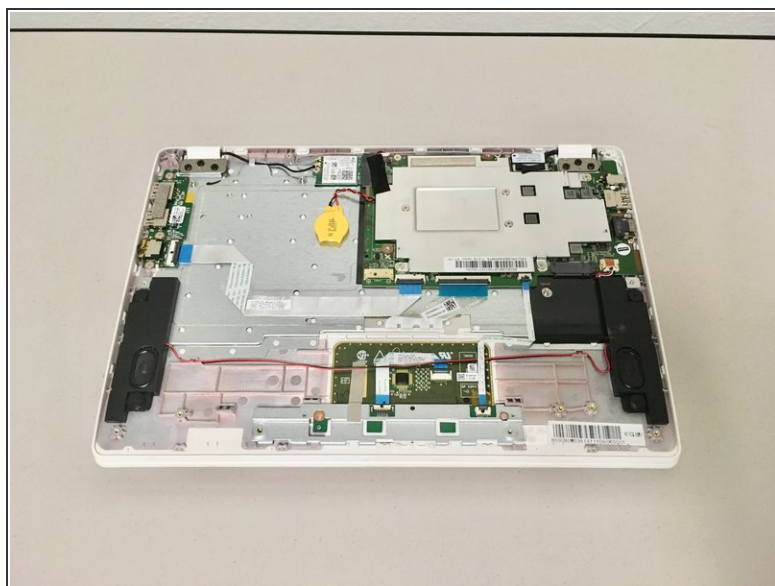
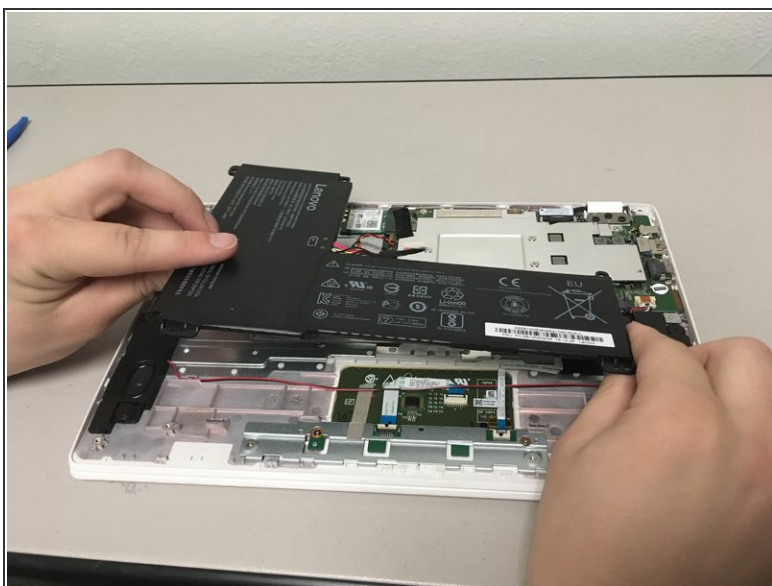
- Remove the battery connector from its socket by pulling the cable away from the hinge using your fingers or a plastic opening tool.
- ⚠ Do not pull on the socket itself or you risk damaging the motherboard.
- Remove the two pieces of tape that are holding the battery down.

## Step 4



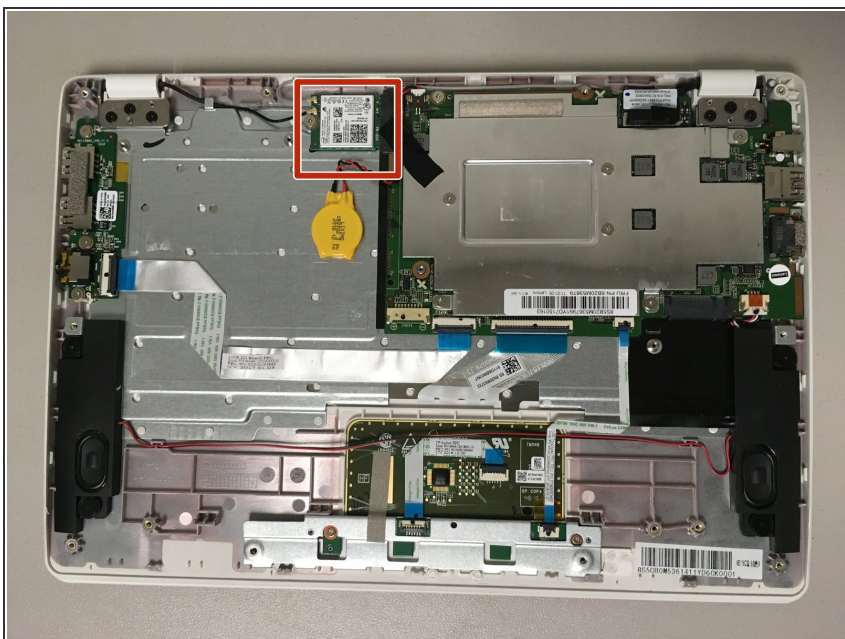
- Remove the five 4 mm Phillips screws securing the battery.

## Step 5



- Lift the battery up and out of the device.

## Step 6 — Wi-Fi Card



- Locate the Wi-Fi card.

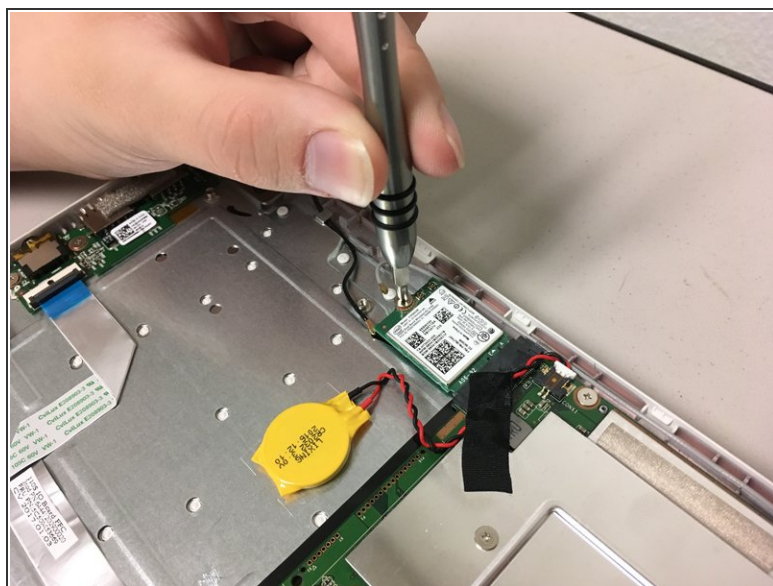


## Step 7



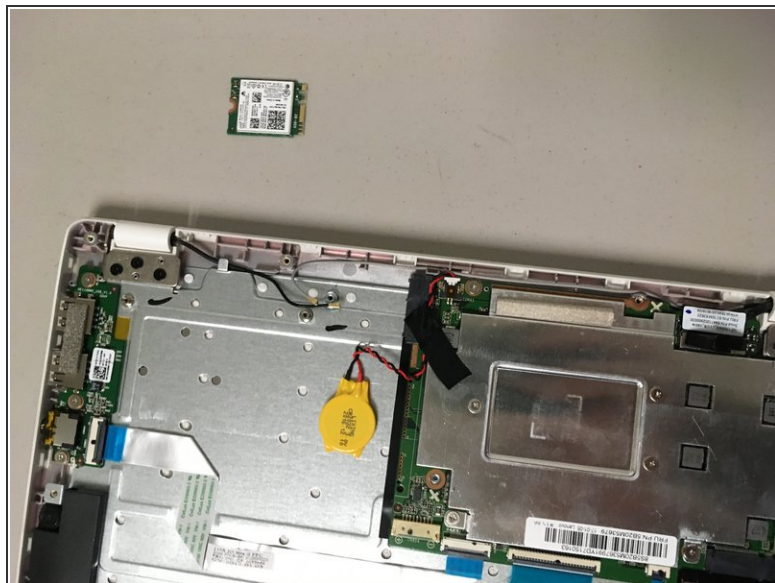
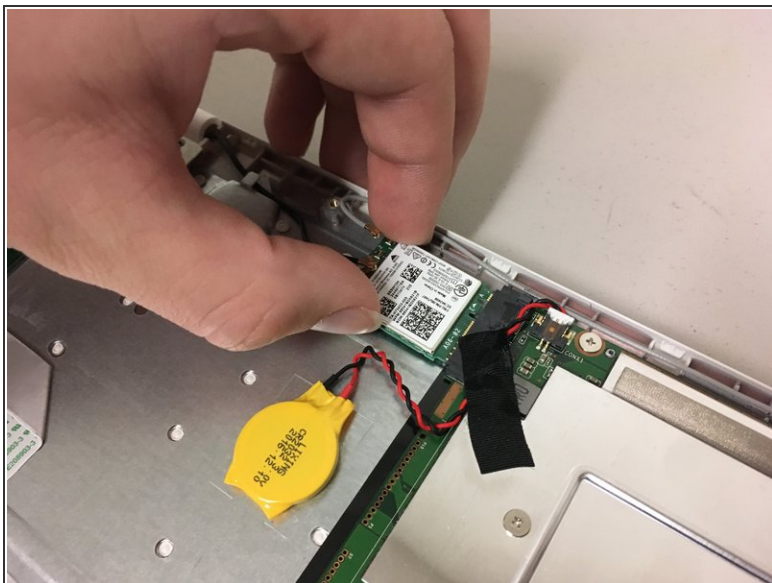
- Disconnect the two wires that are connected to the Wi-Fi card by gently pulling them up.

## Step 8



- Unscrew the one 4mm screw keeping the card in place.

## Step 9



- Gently pull the Wi-Fi card out of place.

To reassemble your device, follow these instructions in reverse order.