



Lenovo Ideapad 320-15ABR Fan Replacement

This guide will provide assistant and a step by step process in how to replace the fan in your Lenovo laptop.

Written By: Katie Marie Schoeling



INTRODUCTION



If you are experiencing troubles with your fan and it needs to be replaced you can locate it inside the laptop.

TOOLS:

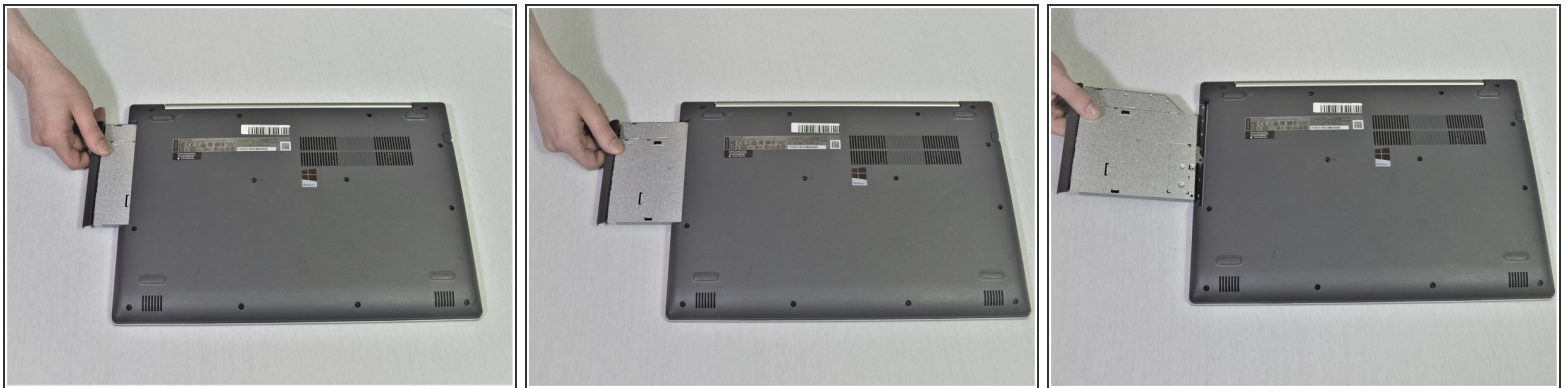
- [Magnetic Project Mat](#) (1)
 - [Phillips #1 Screwdriver](#) (1)
 - [iFixit Opening Tools](#) (1)
-

Step 1 — Back Panel



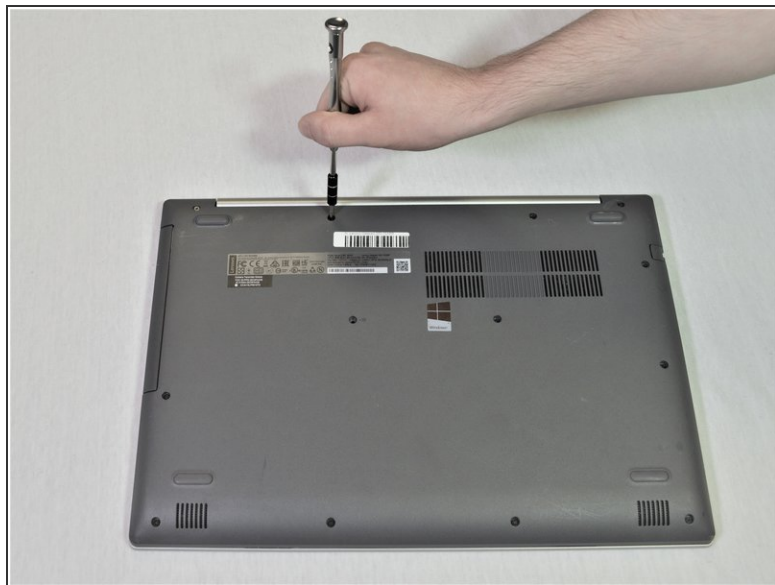
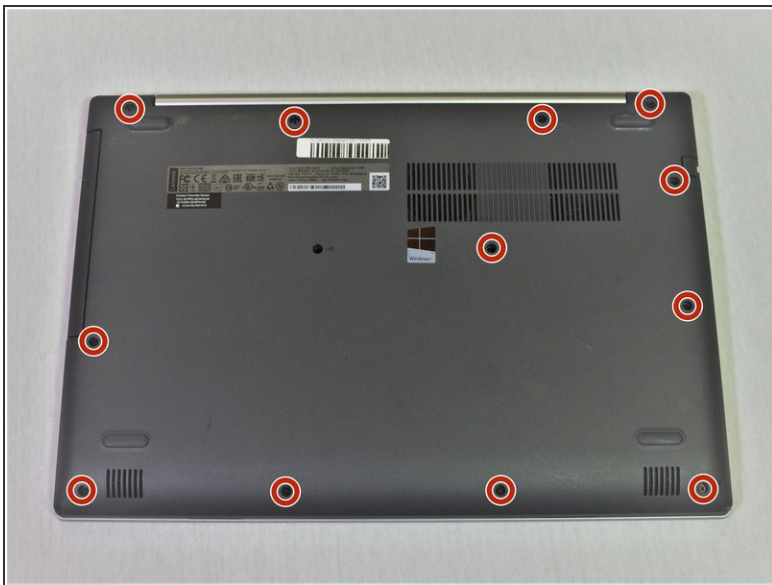
-  Before you proceed, make sure your computer is turned off and is not connected to any power source.
- Remove the single 7 mm Phillips #1 screw securing the optical drive.
-  Be sure to store the screws carefully as they are easy to lose. A magnetic project mat is recommended

Step 2



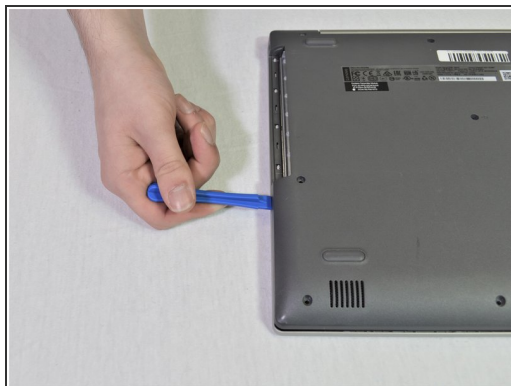
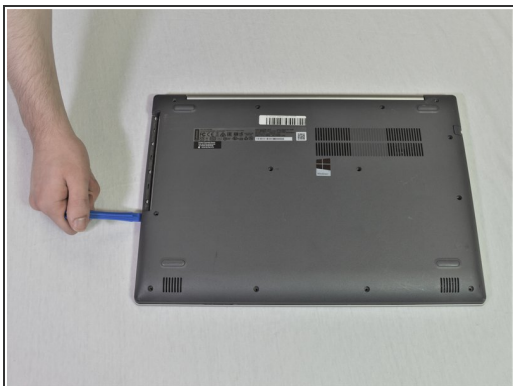
- Carefully remove the optical drive bracket by pulling the bezel away from the laptop.

Step 3



- Using the Phillips #1 screwdriver, remove the twelve screws around the back panel from the laptop.

Step 4



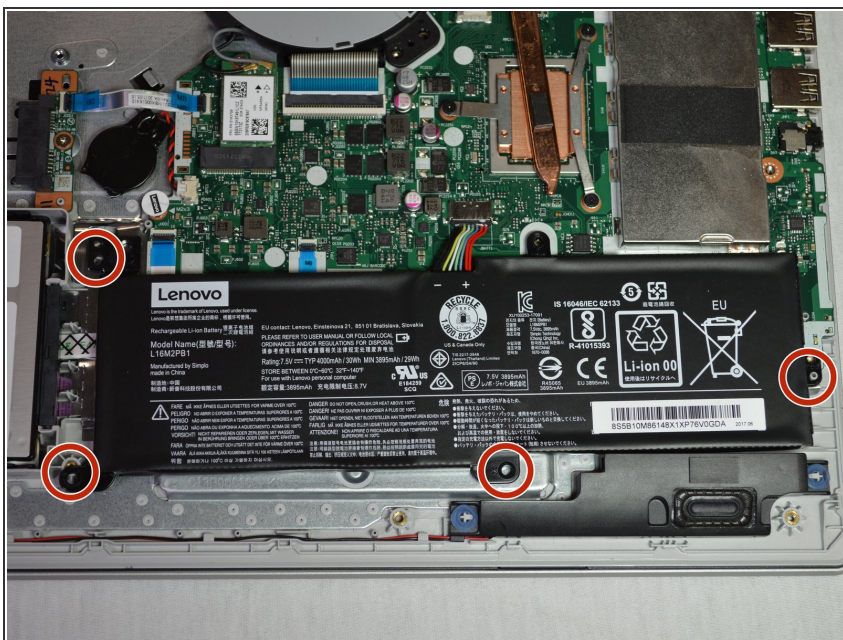
- Use an opening tool to pry out the back cover.

Step 5



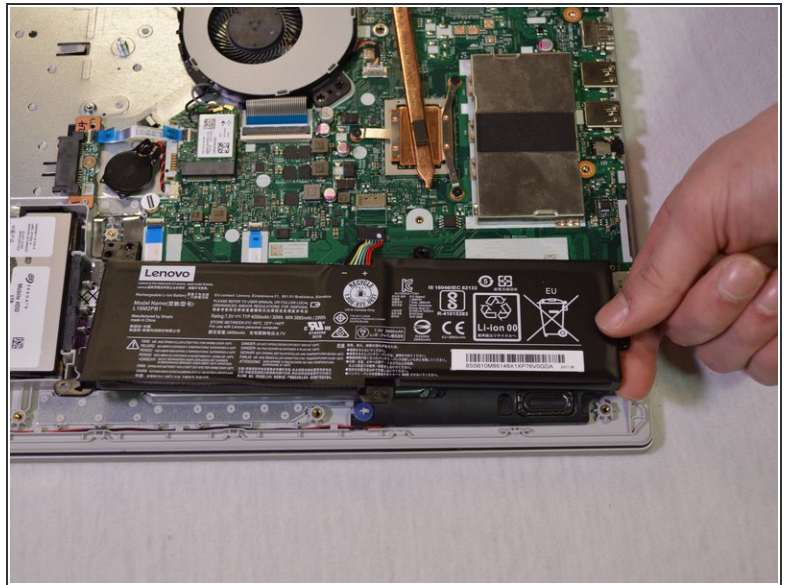
- Remove the back panel by pulling it up and away from the laptop.

Step 6 — Battery



- Remove the four 6mm screws using the Phillips #1 screwdriver.

Step 7



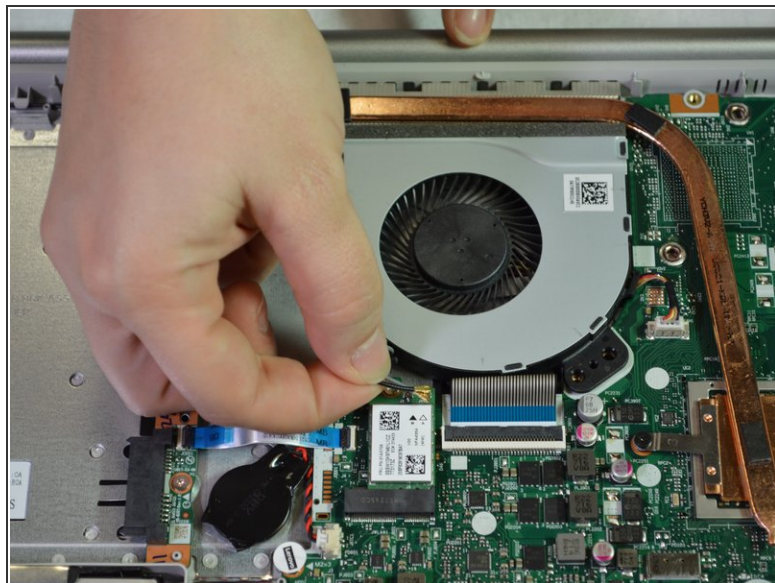
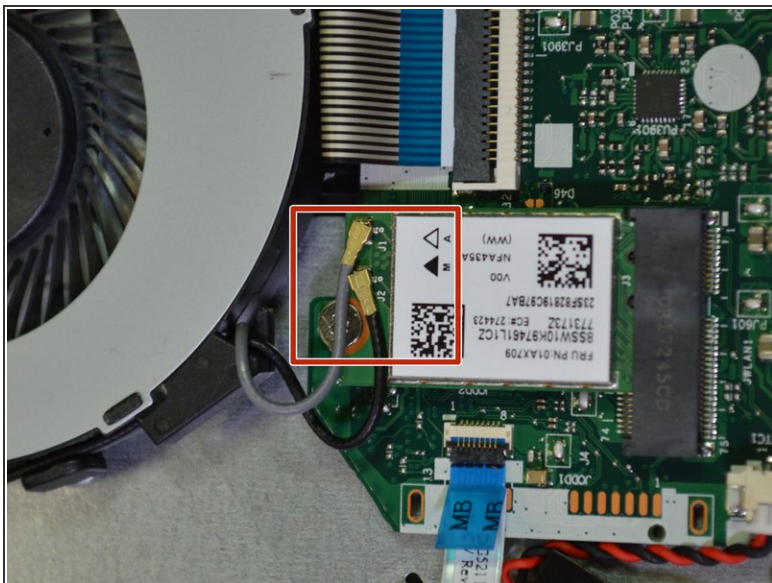
- Disconnect the battery connector by pulling toward the battery parallel to the motherboard.

Step 8



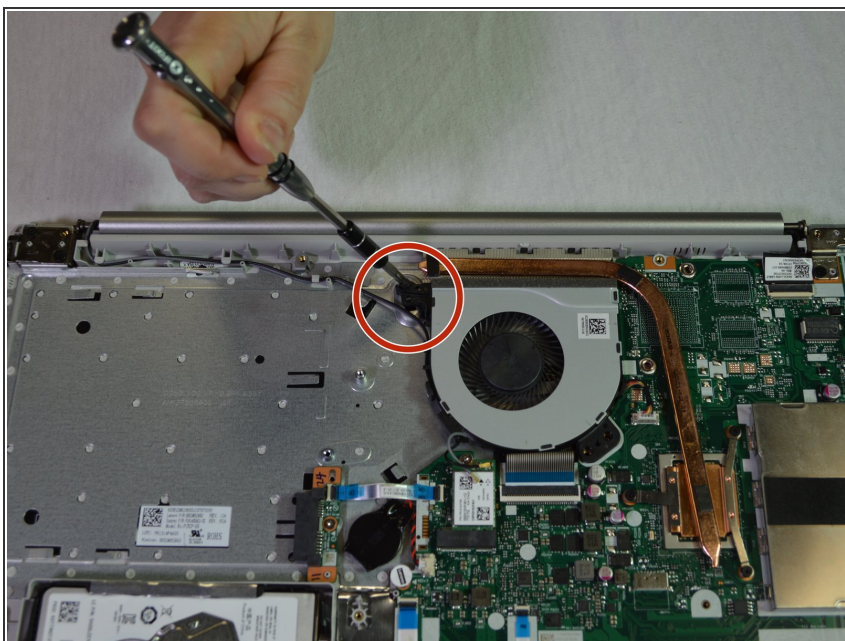
- Remove the battery.

Step 9 — Fan



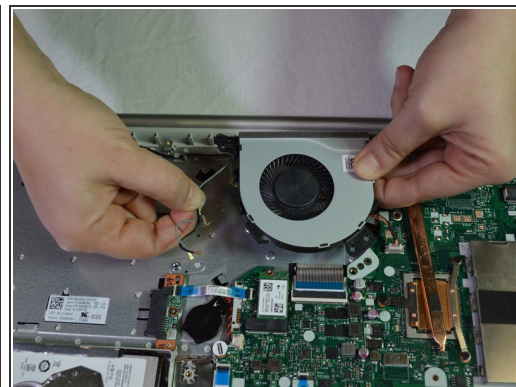
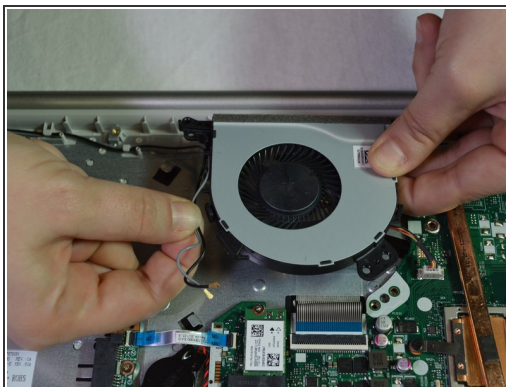
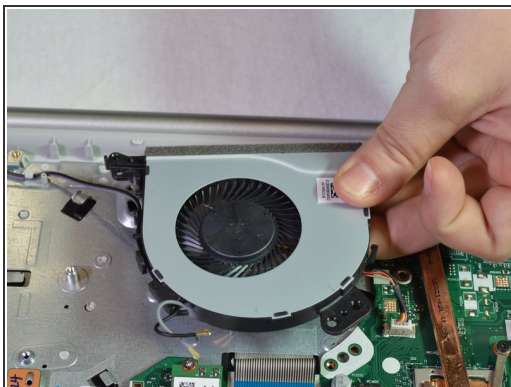
- Disconnect black and grey wires by simply giving them a light tug.

Step 10



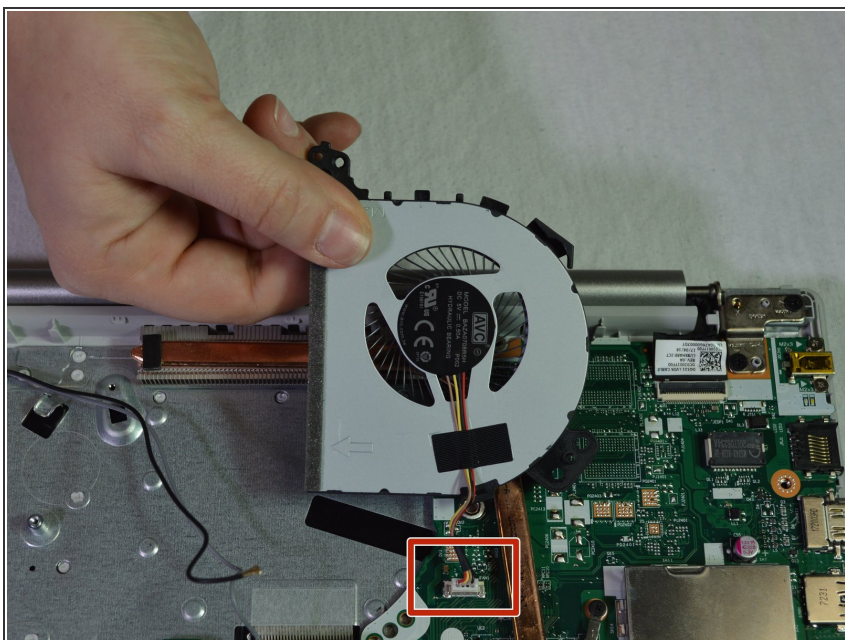
- Remove the 6mm Phillips #1 screw connecting the fan to the laptop.

Step 11



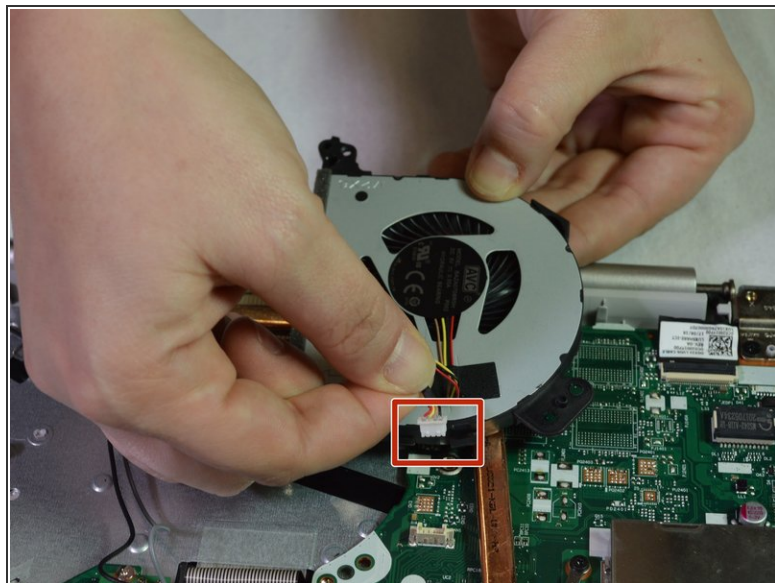
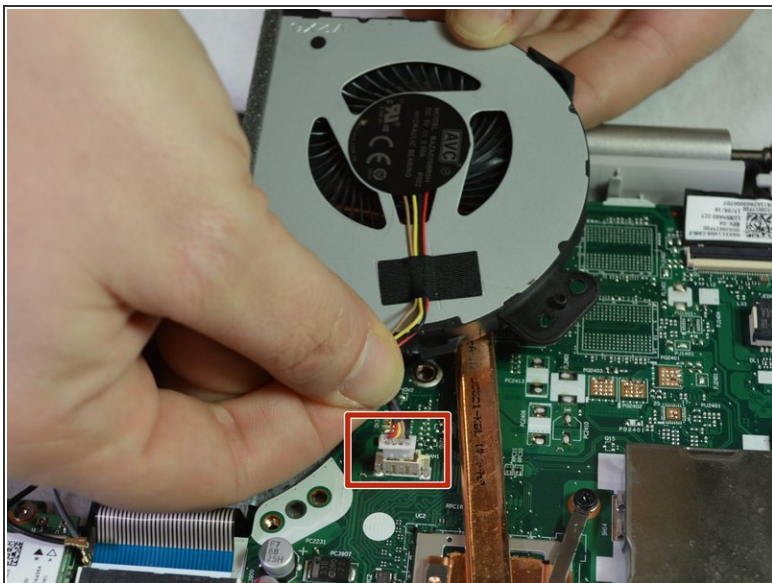
- Lift the fan slightly and straight upward and unwind the black and grey wires from the fan.

Step 12



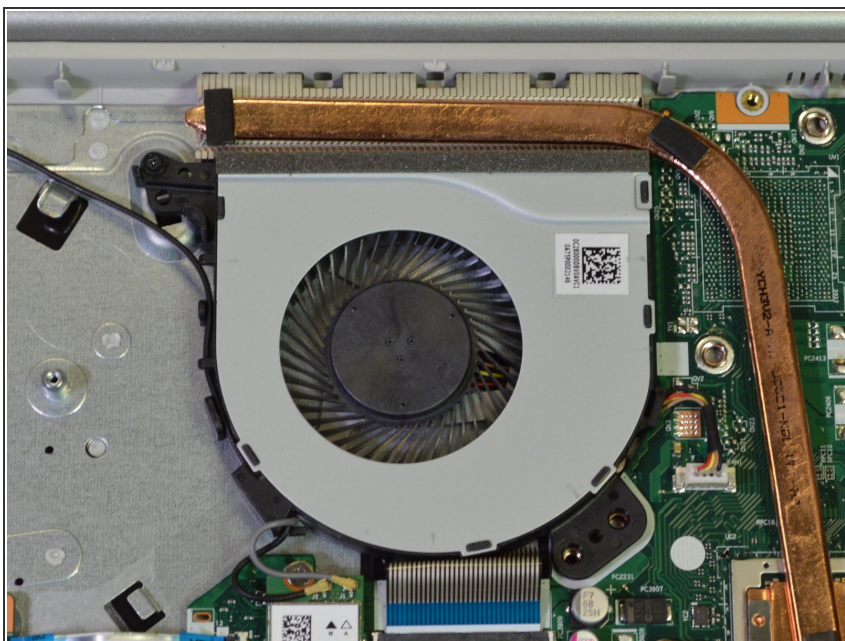
- Identify the red, black, yellow, and brown wire coming from the back of the fan connecting to the motherboard with a white connector piece.

Step 13



- Slowly pull and wiggle the white connector piece until it comes loose from the laptop.

Step 14



- Replace the new fan.

To reassemble your device, follow these instructions in reverse order.