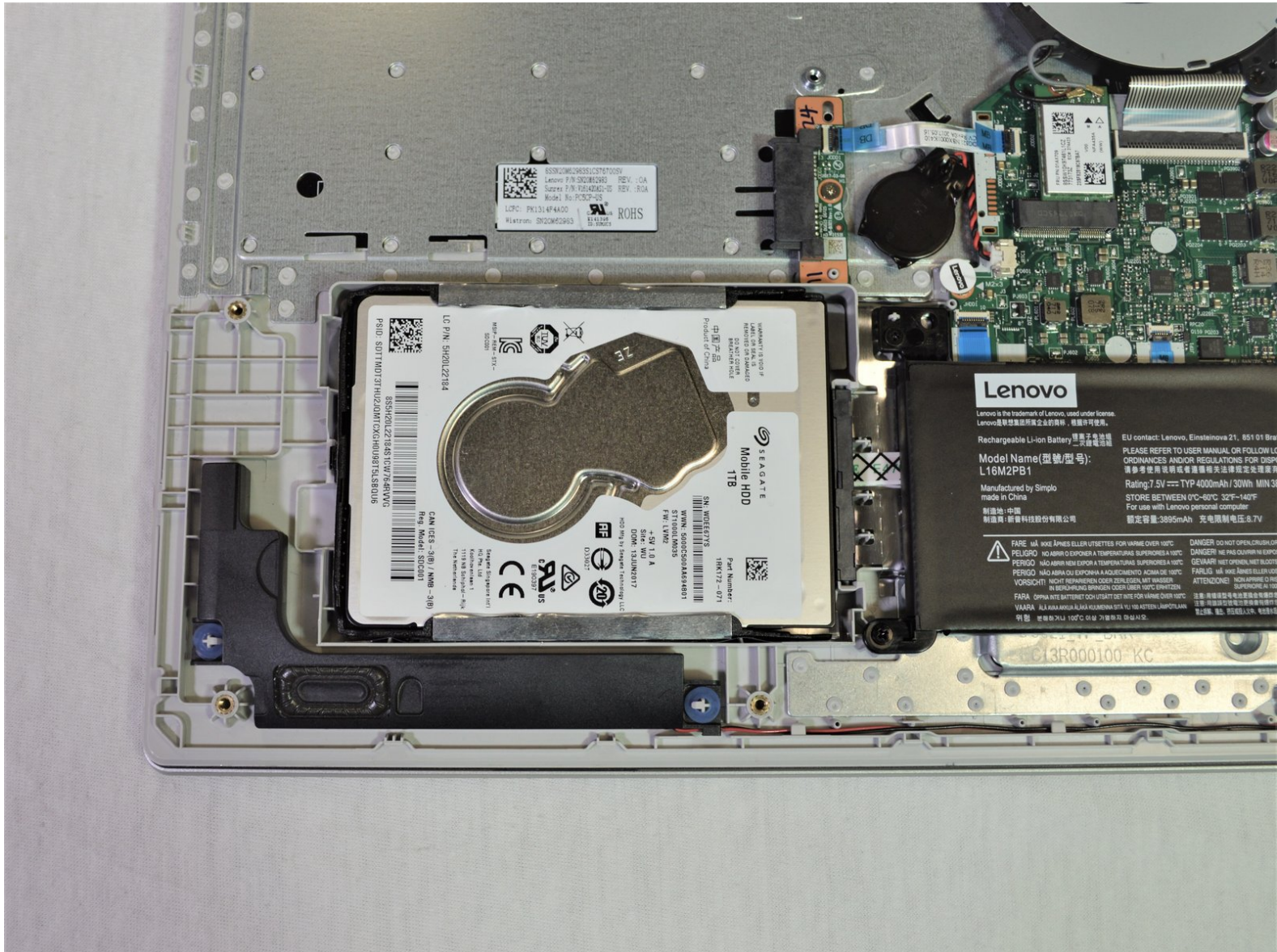




# Lenovo Ideapad 320-15ABR Hard Drive Replacement

This guide will walk you through the process of replacing your hard drive in a step-by-step manner.

Written By: Anurag Deb



## INTRODUCTION

This guide will show you how to remove and replace the hard drive for the device.

Before you start replacing the hard drive, make sure to turn the device off, remove the battery and disconnect the laptop from any power source.



### TOOLS:

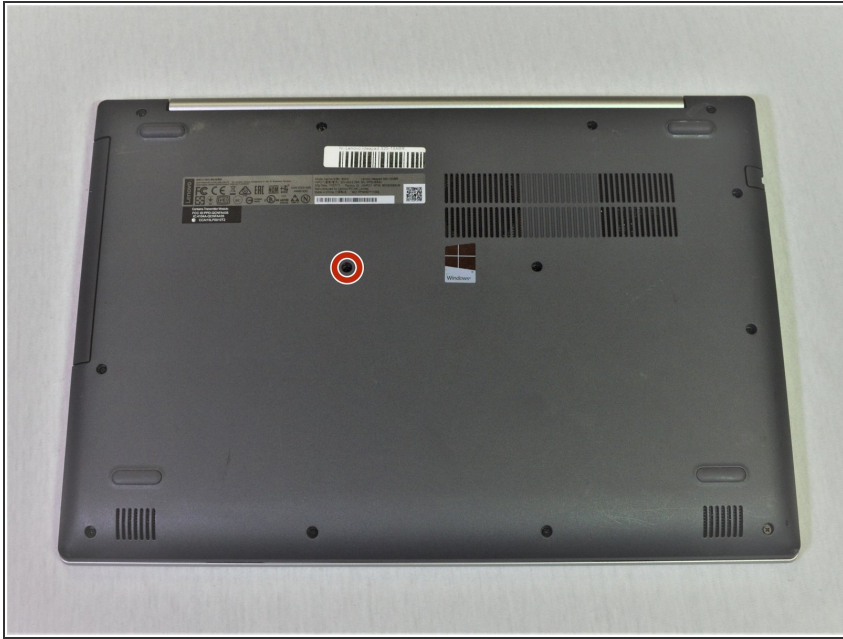
- [Phillips #1 Screwdriver](#) (1)
- [Magnetic Project Mat](#) (1)
- [iFixit Opening Tools](#) (1)




### PARTS:


- [1 TB SSD / Upgrade Bundle](#) (1)
- [250 GB SSD / Upgrade Bundle](#) (1)
- [500 GB SSD / Upgrade Bundle](#) (1)
- [2 TB SSD / Upgrade Bundle](#) (1)

## Step 1 — Back Panel

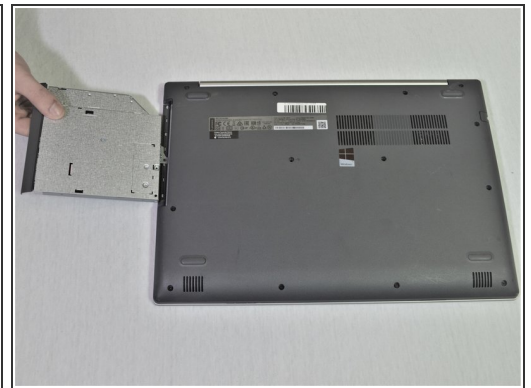
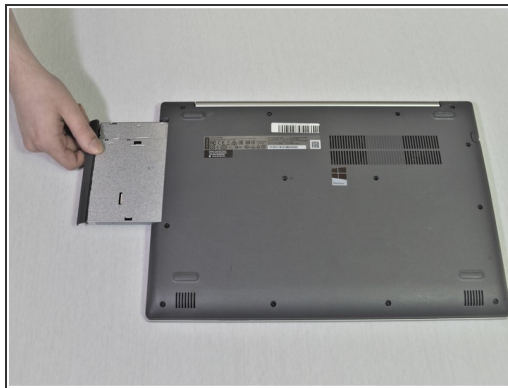
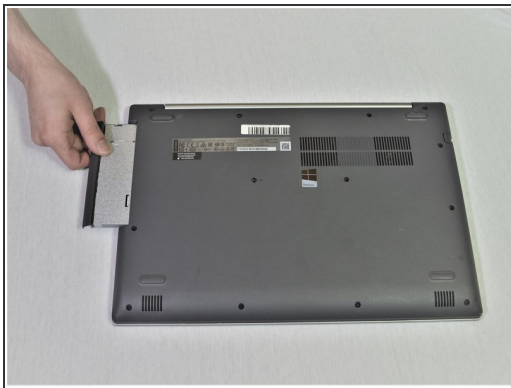


 Before you proceed, make sure your computer is turned off and is not connected to any power source.

● Remove the single 7 mm Phillips #1 screw securing the optical drive.

 Be sure to store the screws carefully as they are easy to lose. A magnetic project mat is recommended

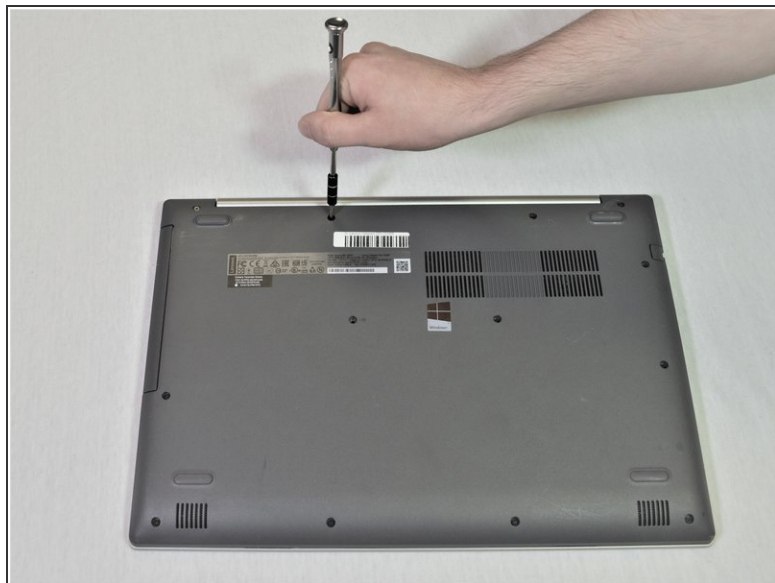
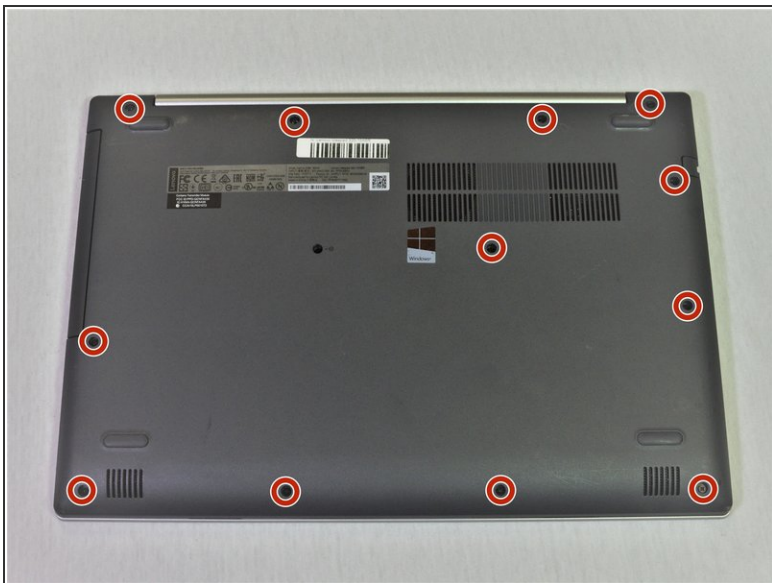
## Step 2



● Carefully remove the optical drive bracket by pulling the bezel away from the laptop.

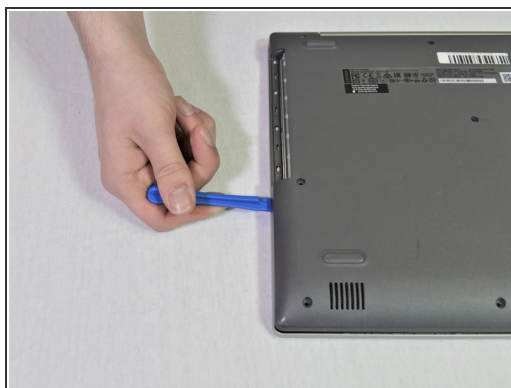
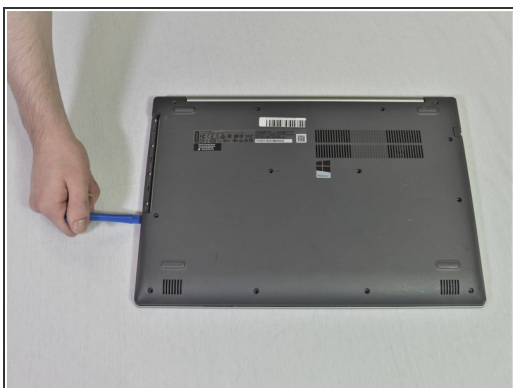


## Step 3



- Using the Phillips #1 screwdriver, remove the twelve screws around the back panel from the laptop.

## Step 4



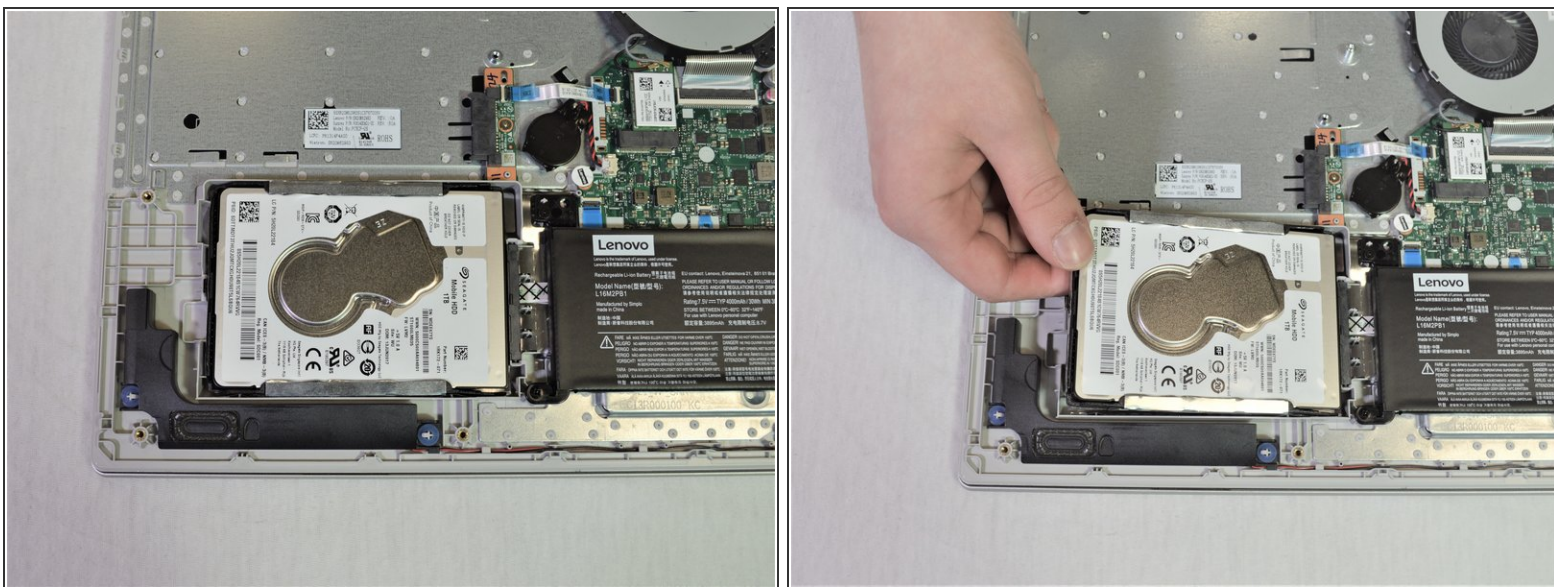
- Use an opening tool to pry out the back cover.

## Step 5



- Remove the back panel by pulling it up and away from the laptop.

## Step 6 — Hard Drive

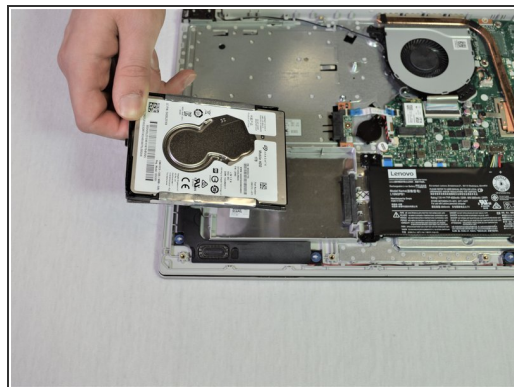



- ⚠ Before removing the drive, make a backup copy of all the information on it if possible. Never remove the drive while the system is operating or in suspend mode.

- Gently lift up the hard disk from the left.



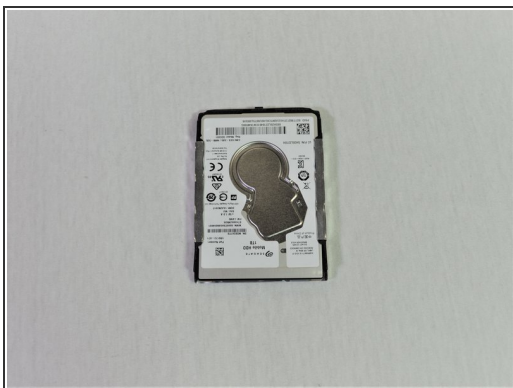
## Step 7



 Do not lift hard drive straight up as it risks breaking the connection port.

- Carefully pull the hard drive away and out of the connection port.

## Step 8



- Detach the bracket from the hard drive by pulling the bracket edges apart.

To reassemble your device, follow these instructions in reverse order.