



Lenovo Ideapad Flex 15 Hard Drive Replacement

Use this guide to replace your Lenovo Ideapad Flex 15's Hard Drive

Written By: Brent



INTRODUCTION

If you are trying to replace your current hard drive, this guide will walk you through the process.



TOOLS:

- [iFixit Opening Tools](#) (1)
 - [Phillips #1 Screwdriver](#) (1)
-

Step 1 — Bottom Panel



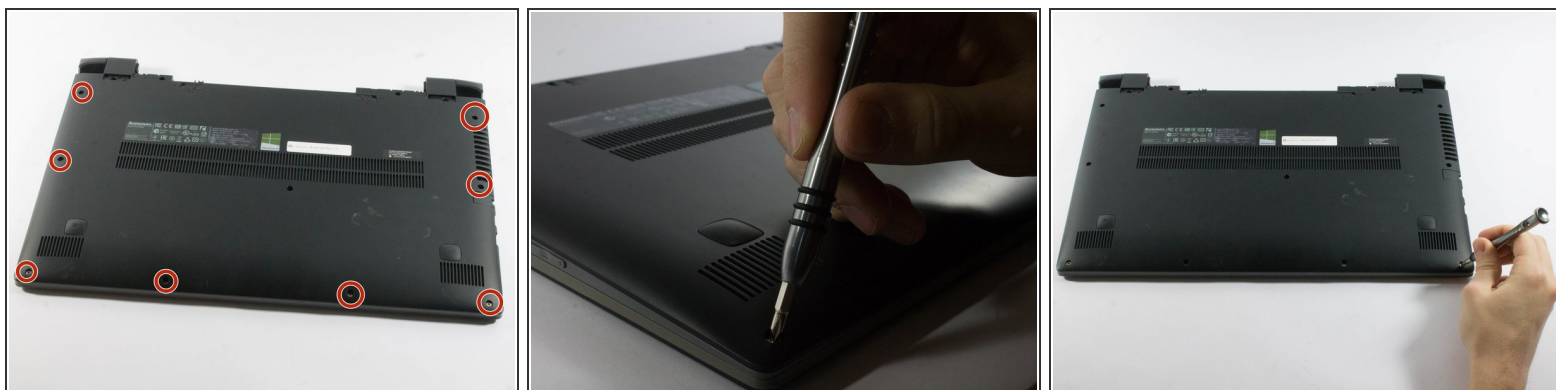
- Start by removing the feet near the LCD hinge of the laptop to reveal two screws.
- Using a Phillips #1 screwdriver, remove the top five (30 mm) screws underneath the battery.

Step 2



- Once both feet are removed, two (40 mm) screws will reveal themselves. Unscrew these.

Step 3



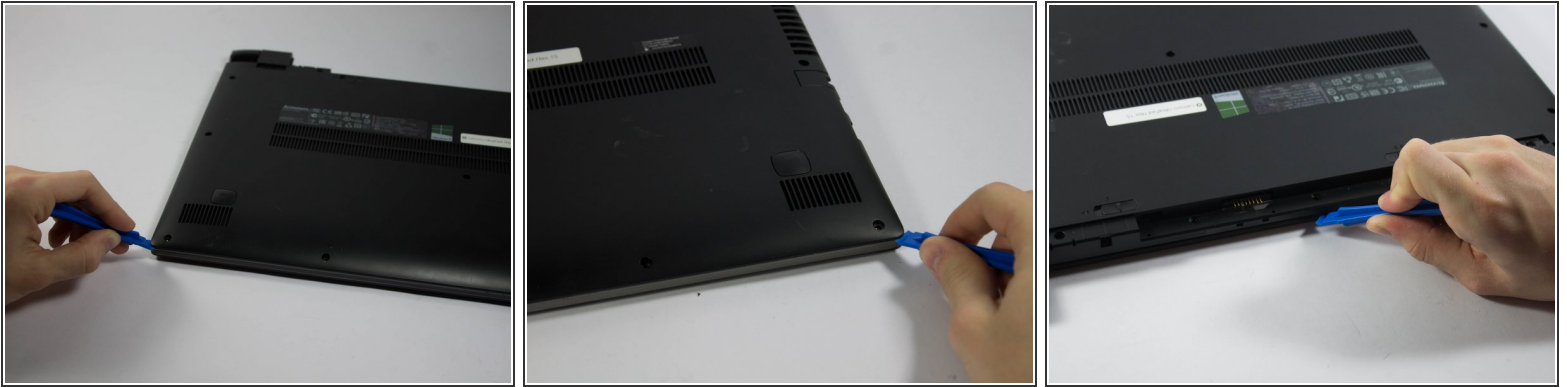
- Working your way around the outer edges of the Flex 15, remove the 8 (30 mm) outer screws.

Step 4



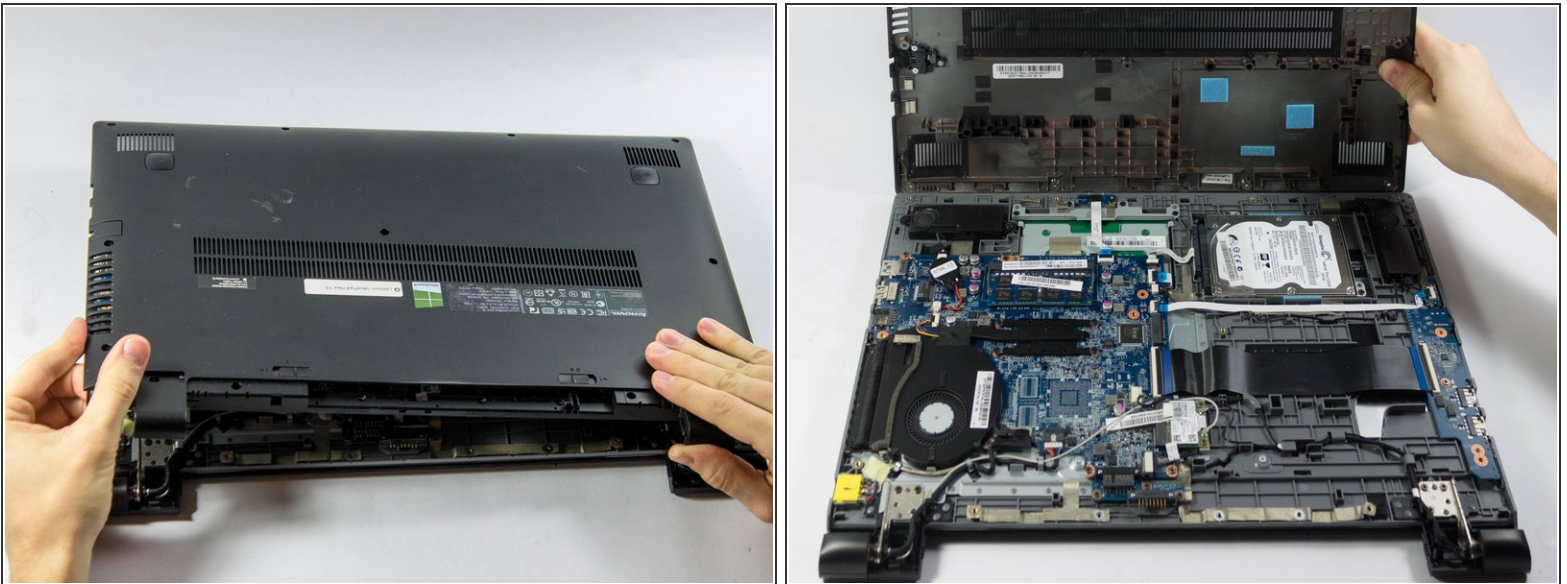
- Remove the one (40 mm) screw in the middle of the Flex 15.

Step 5



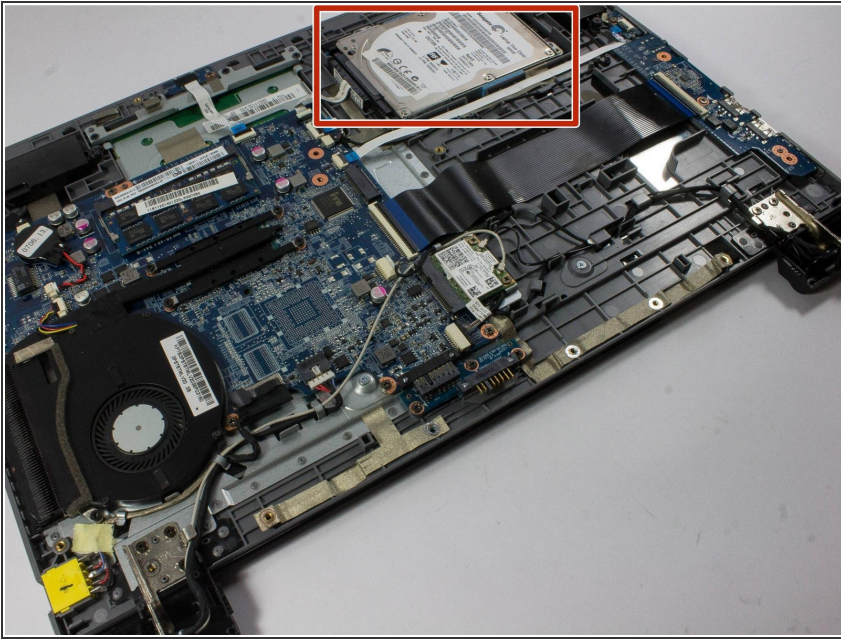
- Using a plastic opening tool, make your way around the edge of the laptop.
- There is a visible line between the bottom shell of the laptop and the laptop body itself.

Step 6



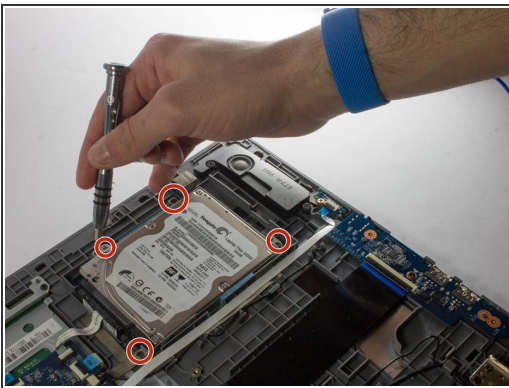
- Make sure to pry evenly around this edge and only remove the bottom of the laptop when it is fully loose.
- ⓘ Using excessive force may break the bottom plastic. There are plastic clips along the edge of the laptop.

Step 7 — Hard Drive



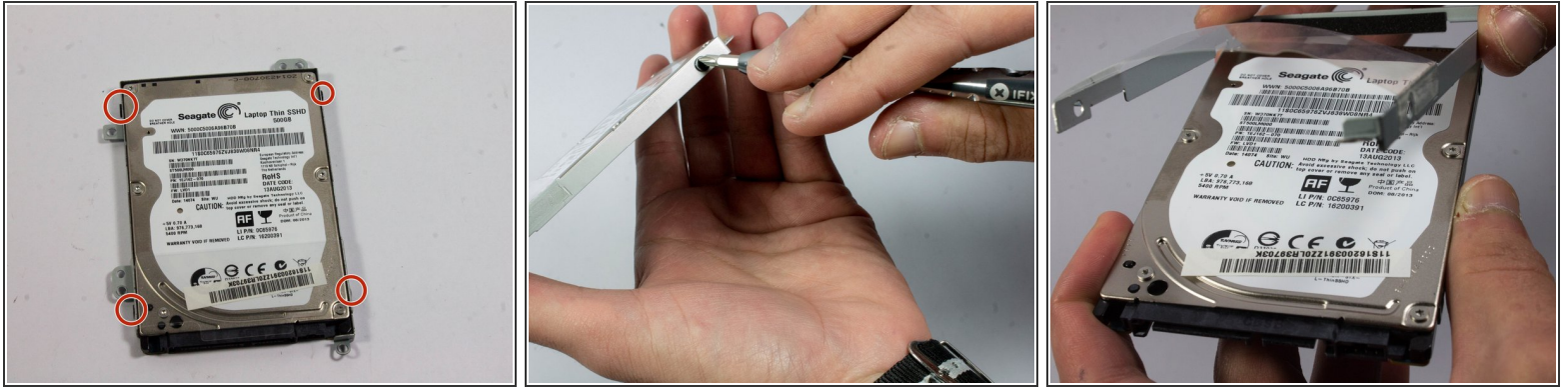
- Locate the hard drive assembly on the top right hand corner of the Flex 15 based on the orientation of the device in the picture.

Step 8



- Begin by unscrewing the four (20 mm) black screws that surround the hard drive's metal cage.
- Once removed, remove the black SATA connector by pulling it from the hard drive unit towards the right hand side of the laptop.

Step 9



- The hard drive should be freed from the base of the laptop.
- There are four (20 mm) black screws surrounding the hard drive from the cage. Two on each side.
- Unscrew these to free the hard drive from the cage

To reassemble your device, follow these instructions in reverse order.