



Lenovo Ideapad Flex 15 USB Header Adaptor Replacement

Use this guide to replace your Lenovo Ideapad Flex 15's USB ports.

Written By: Brent



INTRODUCTION

If you need to replace or reinstall the USB ports on your Lenovo Ideapad Flex 15, this guide will walk you through the process.

TOOLS:

- [Phillips #1 Screwdriver](#) (1)
 - [iFixit Opening Tools](#) (1)
-

Step 1 — Bottom Panel



- Start by removing the feet near the LCD hinge of the laptop to reveal two screws.
- Using a Phillips #1 screwdriver, remove the top five (30 mm) screws underneath the battery.

Step 2



- Once both feet are removed, two (40 mm) screws will reveal themselves. Unscrew these.

Step 3



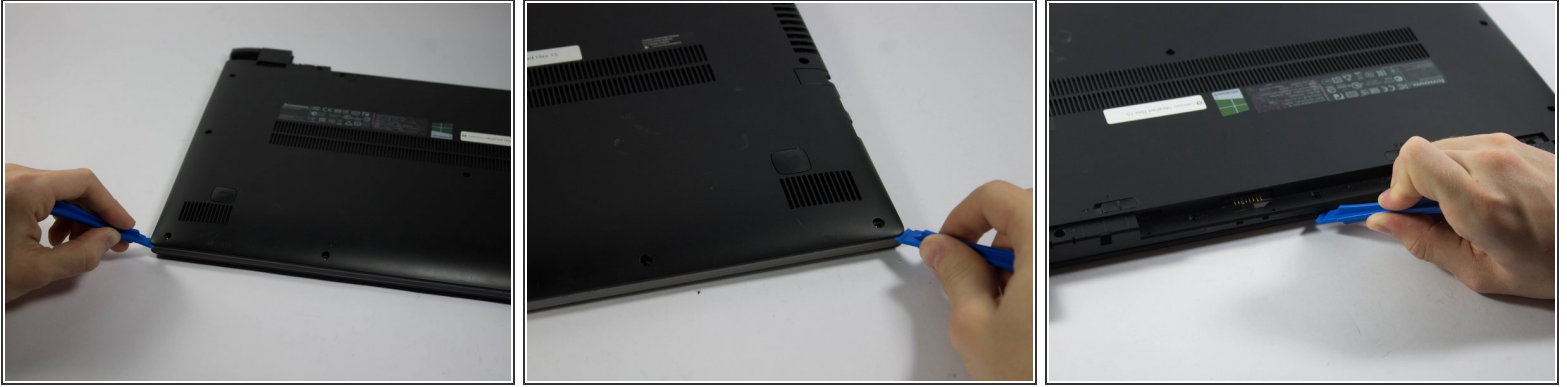
- Working your way around the outer edges of the Flex 15, remove the 8 (30 mm) outer screws.

Step 4



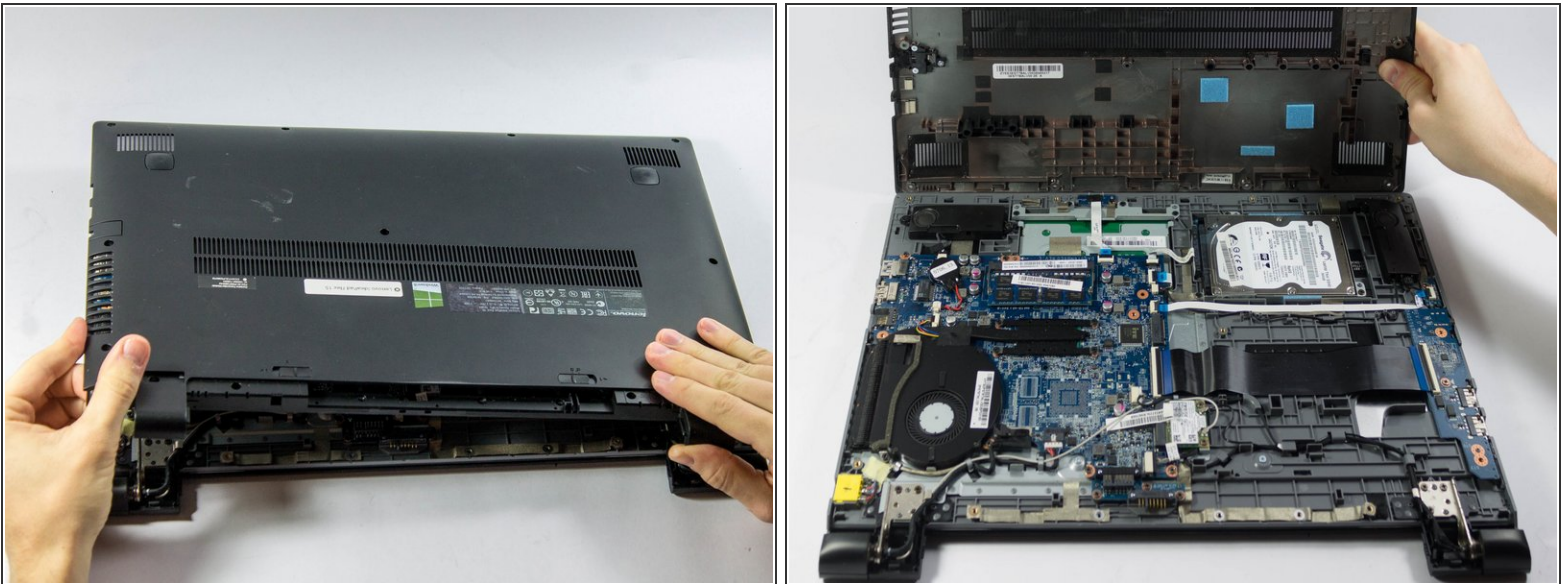
- Remove the one (40 mm) screw in the middle of the Flex 15.

Step 5



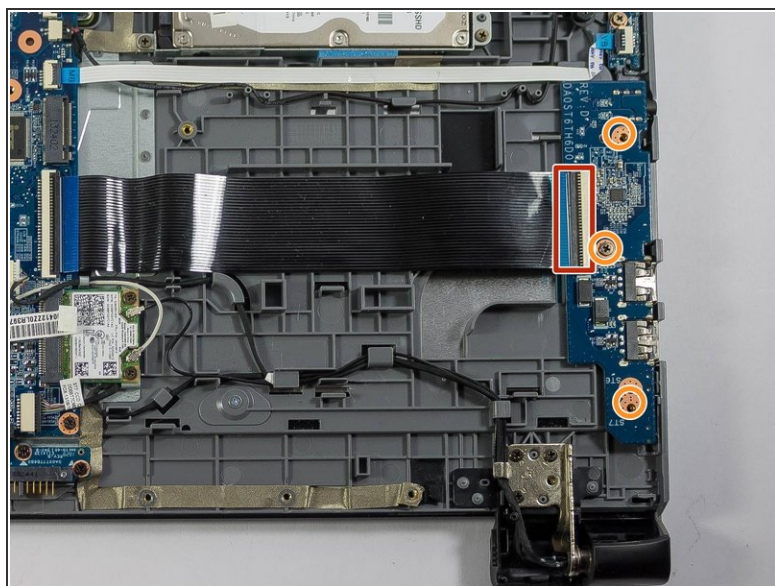
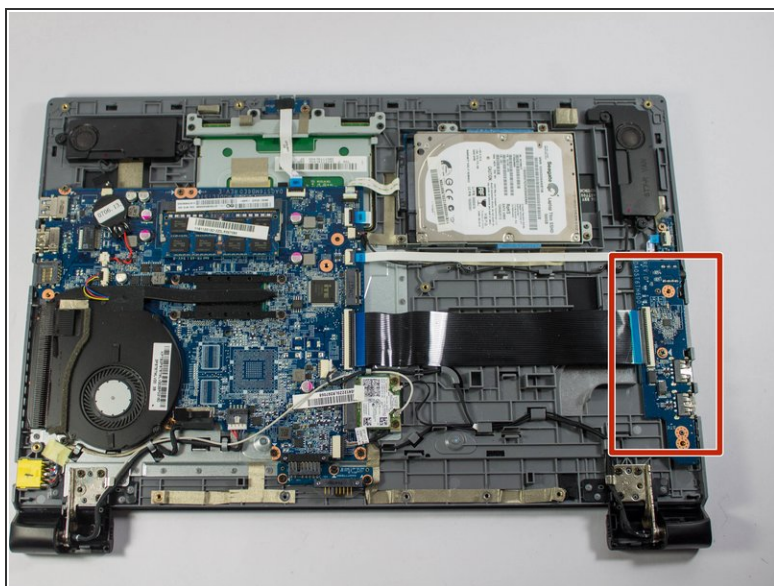
- Using a plastic opening tool, make your way around the edge of the laptop.
- There is a visible line between the bottom shell of the laptop and the laptop body itself.

Step 6



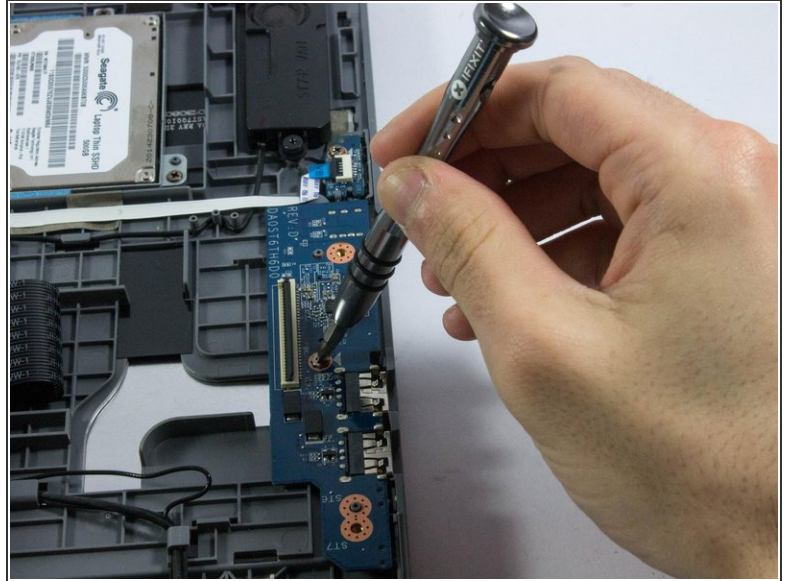
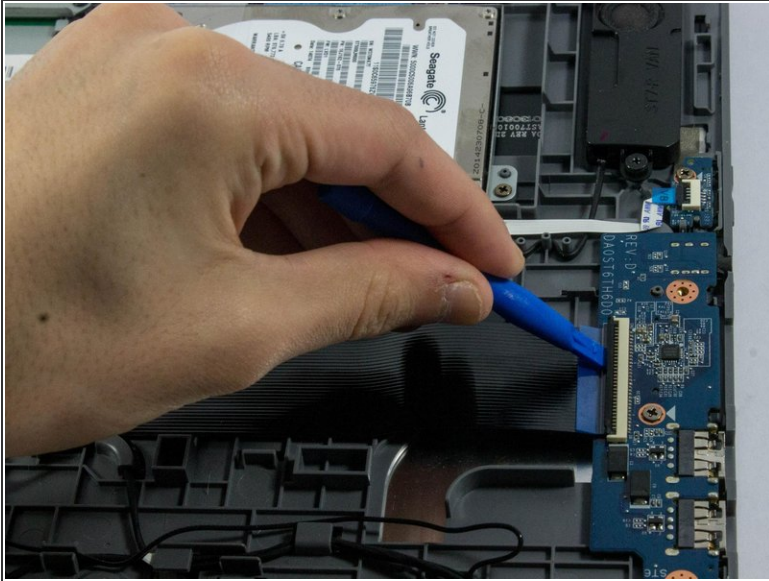
- Make sure to pry evenly around this edge and only remove the bottom of the laptop when it is fully loose.
- ⓘ Using excessive force may break the bottom plastic. There are plastic clips along the edge of the laptop.

Step 7 — USB Header Adaptor



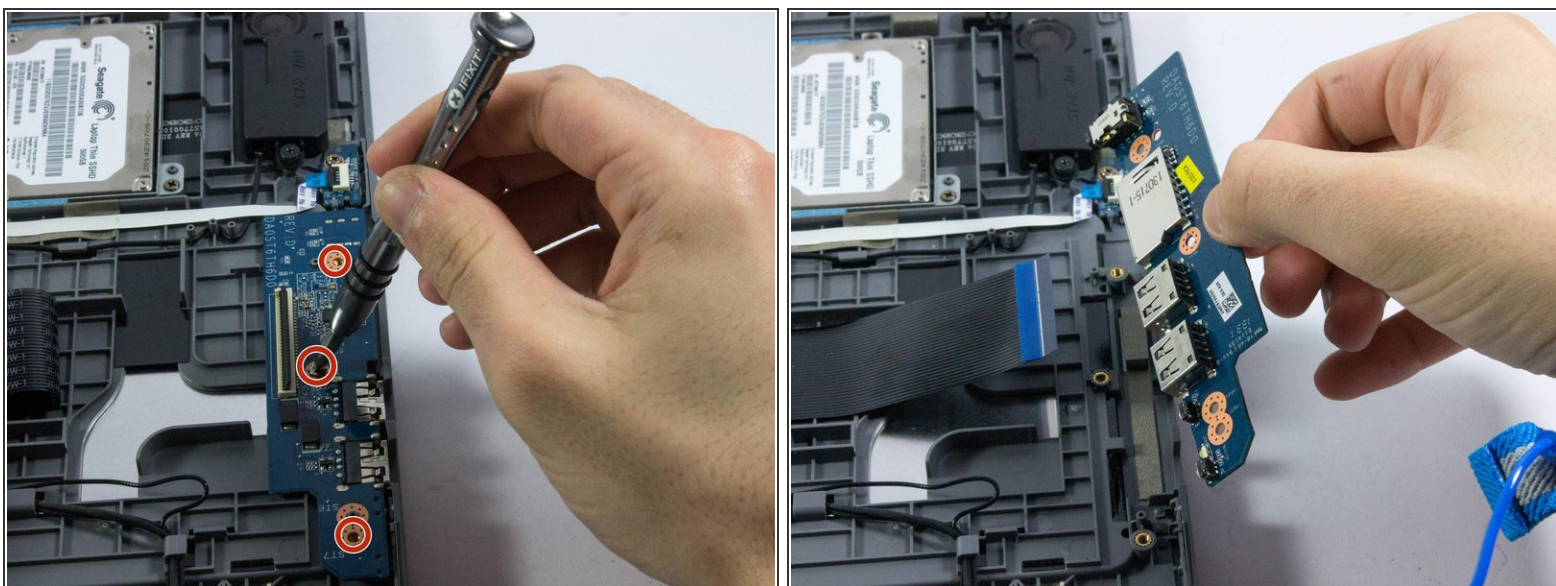
- Locate the large blue circuit board on the leftmost side of the Flex 15.
- This board is connected in two ways, by both a screw and a ribbon cable.

Step 8



- The large black ribbon cable is attached to a header. With a blue opening tool, flip up the ZIF (zero insertion force) connector, then pry the header from a 0 degree angle to a 90 degree angle. Be sure not to snap the header while doing it, it is very delicate.
- Once the ribbon cable is freed, gently pull it out of the header.

Step 9



- Locate the (20 mm) screws with the orange ring and the arrow on the PCB pointing to it. Remove these screws.
- Once freed, pull the assembly upwards, away from the computer.

To reassemble your device, follow these instructions in reverse order.