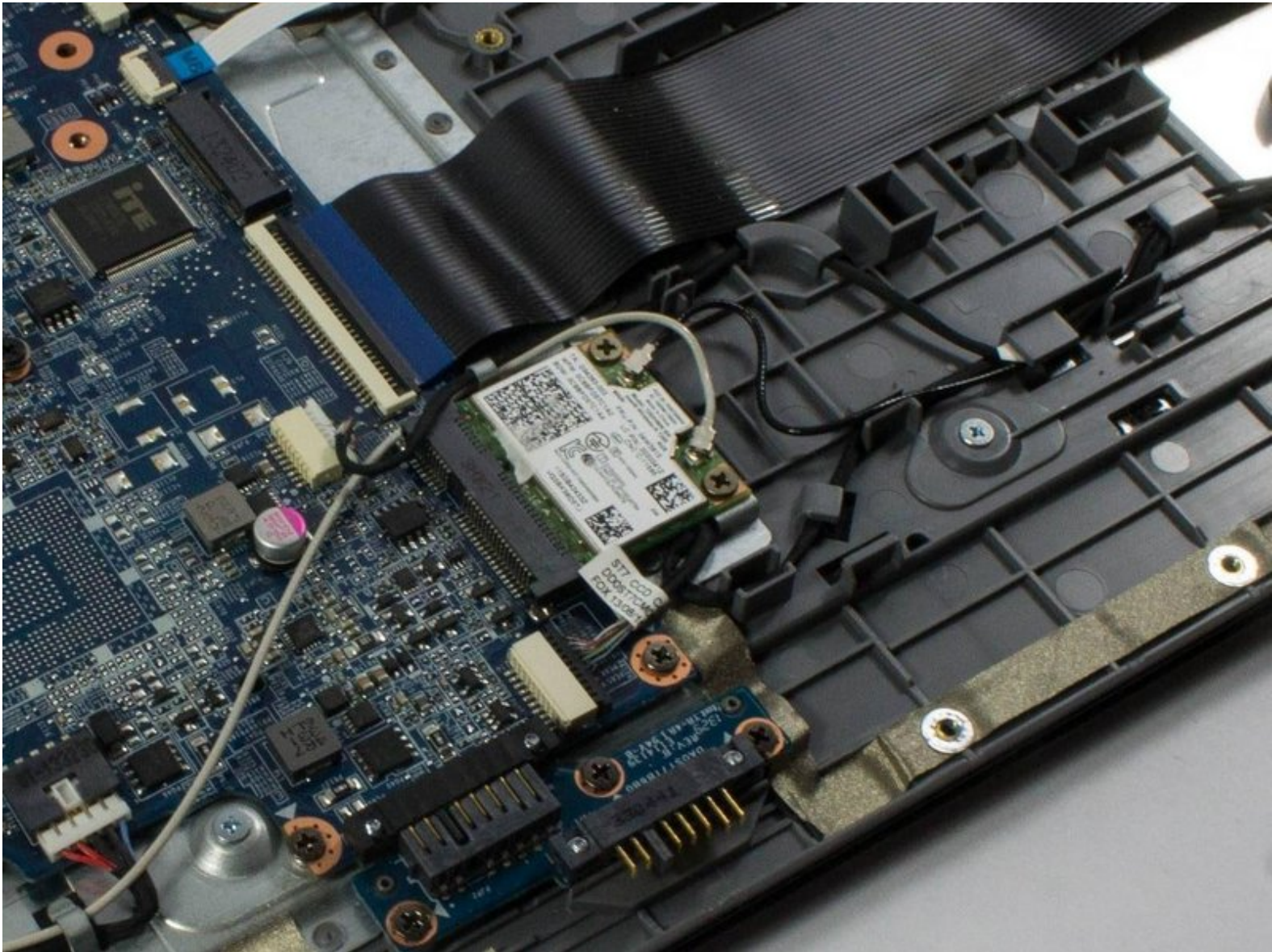




Lenovo Ideapad Flex 15 Wireless Networking Card Replacement

Use this guide to replace your Lenovo Ideapad Flex 15's Wireless Networking Card

Written By: Brent



INTRODUCTION

If your wireless networking card is not working or needs to be replaced / upgraded, follow this guide.



TOOLS:

- [IFIXIT screwdriver with a PH1 bit and a flat plastic spudger](#) (1)
 - [iFixit Opening Tools](#) (1)
-

Step 1 — Bottom Panel



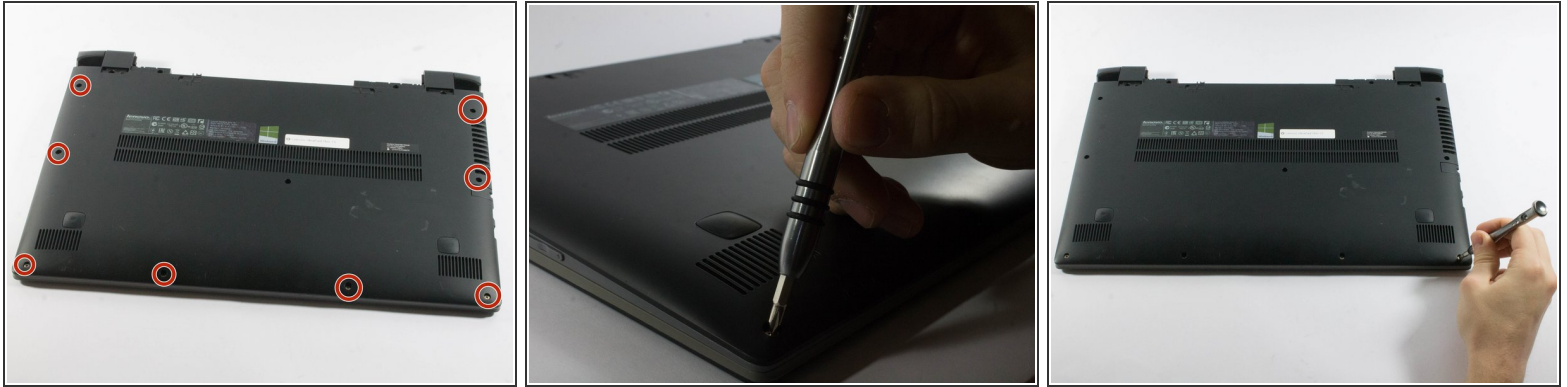
- Start by removing the feet near the LCD hinge of the laptop to reveal two screws.
- Using a Phillips #1 screwdriver, remove the top five (30 mm) screws underneath the battery.

Step 2



- Once both feet are removed, two (40 mm) screws will reveal themselves. Unscrew these.

Step 3



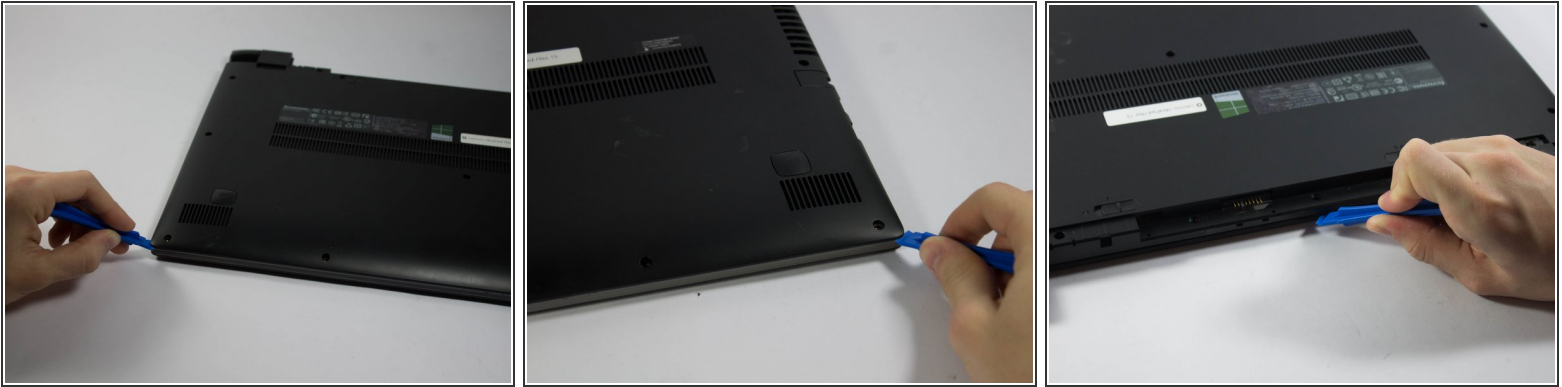
- Working your way around the outer edges of the Flex 15, remove the 8 (30 mm) outer screws.

Step 4



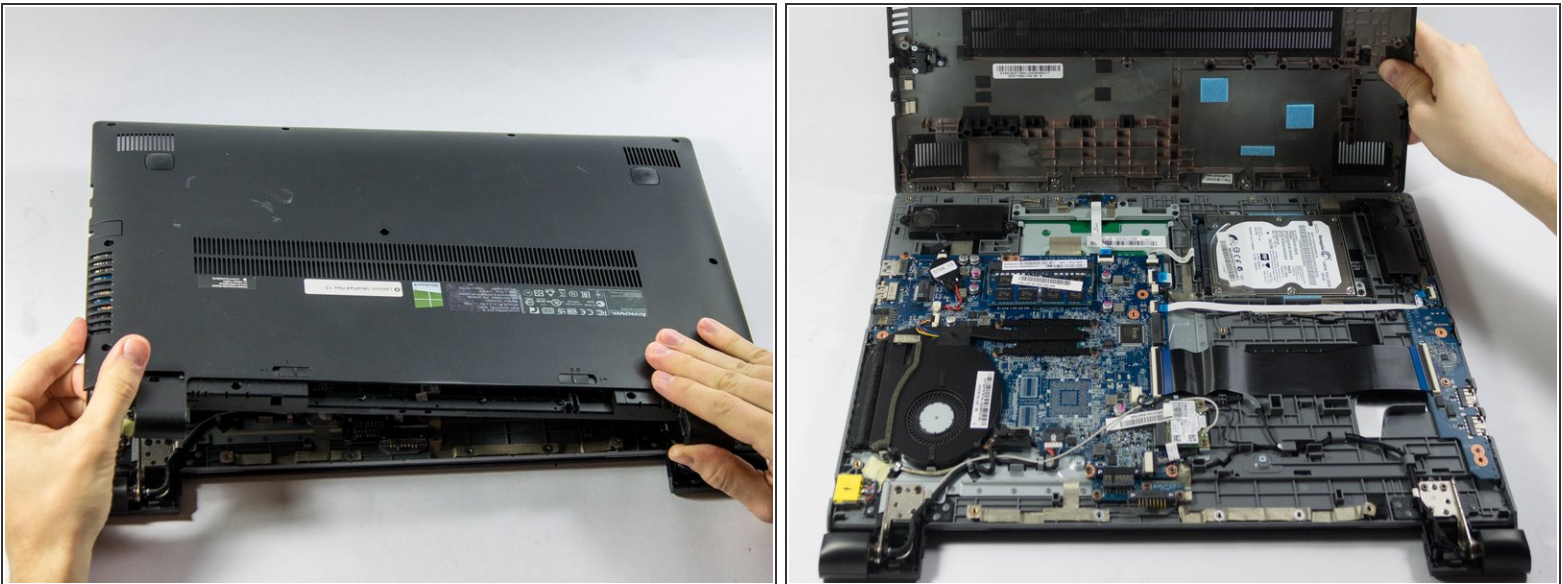
- Remove the one (40 mm) screw in the middle of the Flex 15.

Step 5



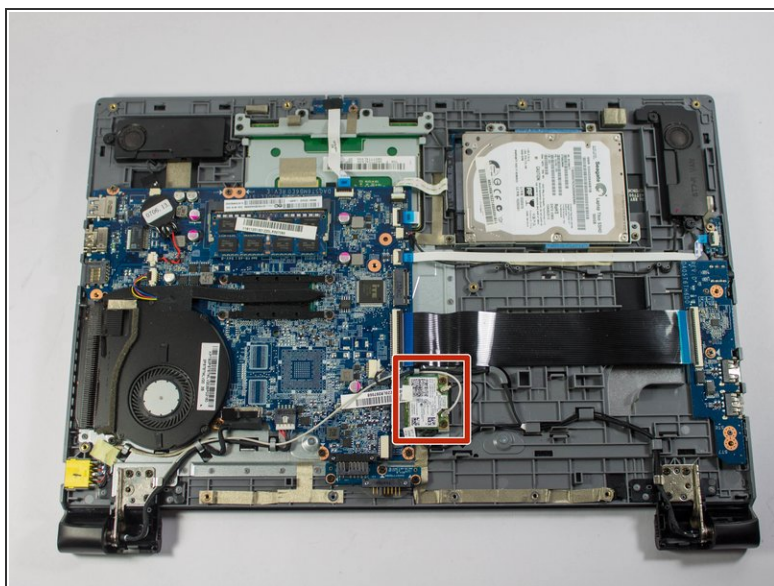
- Using a plastic opening tool, make your way around the edge of the laptop.
- There is a visible line between the bottom shell of the laptop and the laptop body itself.

Step 6



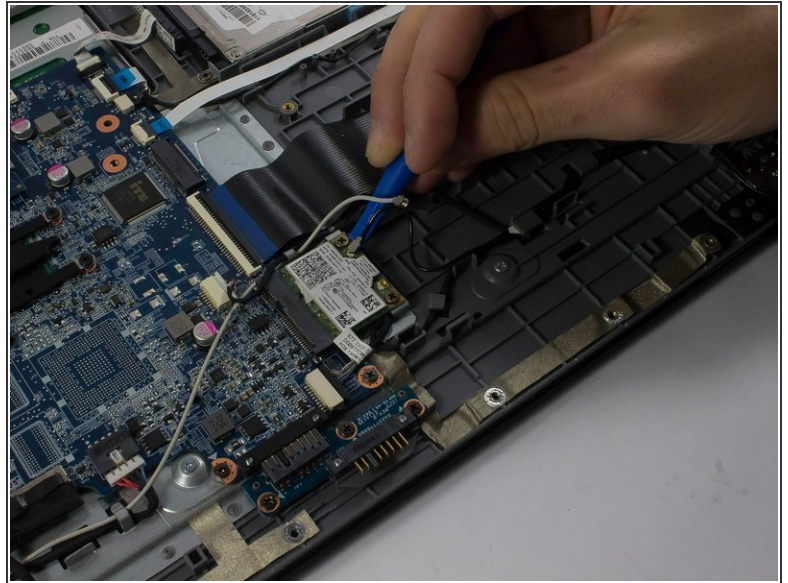
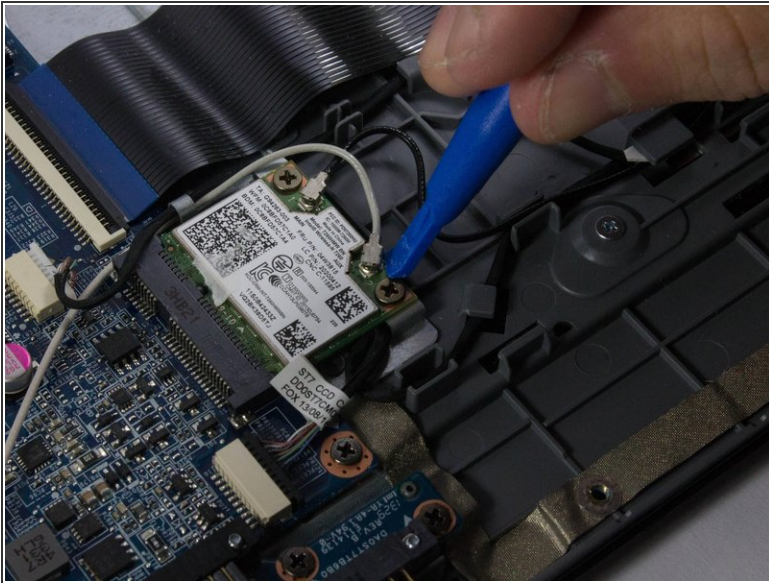
- Make sure to pry evenly around this edge and only remove the bottom of the laptop when it is fully loose.
- ⓘ Using excessive force may break the bottom plastic. There are plastic clips along the edge of the laptop.

Step 7 — Wireless Networking Card



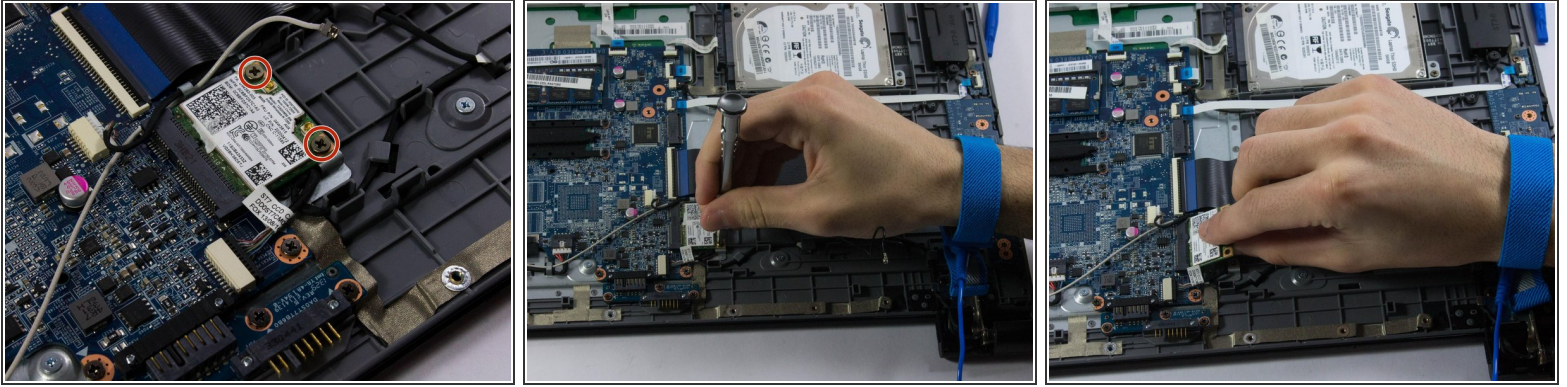
- Locate the wireless card. It is located above the black ribbon cable, underneath the battery terminals.
- The wireless card has two antennas (black and white cables) that are attached to other parts of the laptop.

Step 8



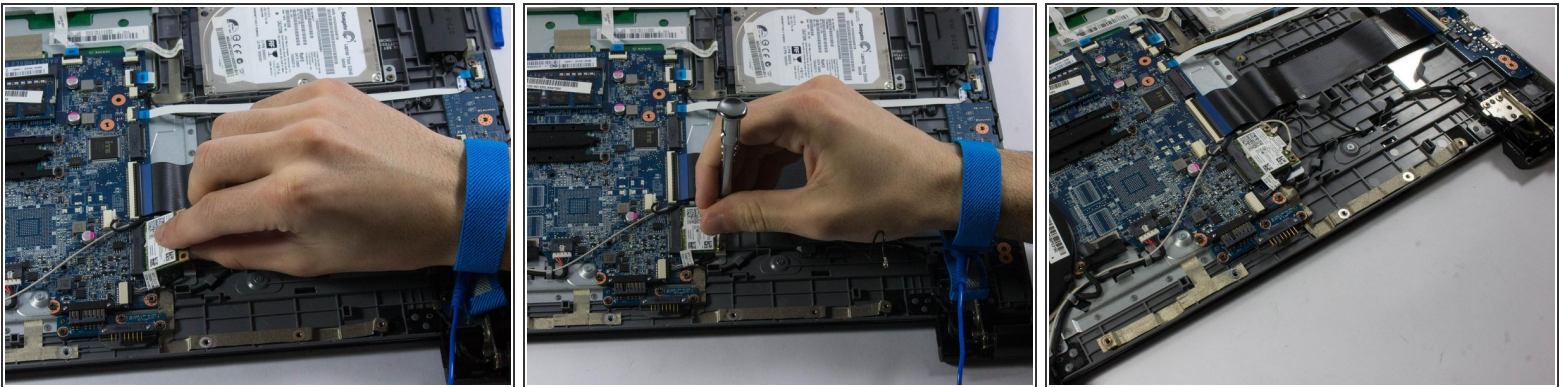
- To remove these cables, take your plastic opening tool and gently pry around the metal base above the PCB until the connectors are freed.
- Repeat this step with both the black and the white antennas

Step 9



- There are two (30 mm) screws attached to the wireless card underneath the antenna. Remove both of these with your screwdriver (bit PH1).
- Once the screws are removed, the wireless card will tilt upwards. Firmly grab the card with one hand and pull it slowly, diagonally, out of the socket.
- To replace this card with a new wireless card, put the contacts back into the socket. The wireless card should be sitting at a 45 degree angle.

Step 10



- To seat the wireless card, put the two screws back into the card. It should be flush against the base of the laptop.
- Line up the white antenna back in the original (left) terminal. Push the antenna gently onto the wireless adapter with one finger. Give it a small tug to ensure it is connected firmly.
- Do the same with the black antenna, snapping it onto the right antenna port.

To reassemble your device, follow these instructions in reverse order.