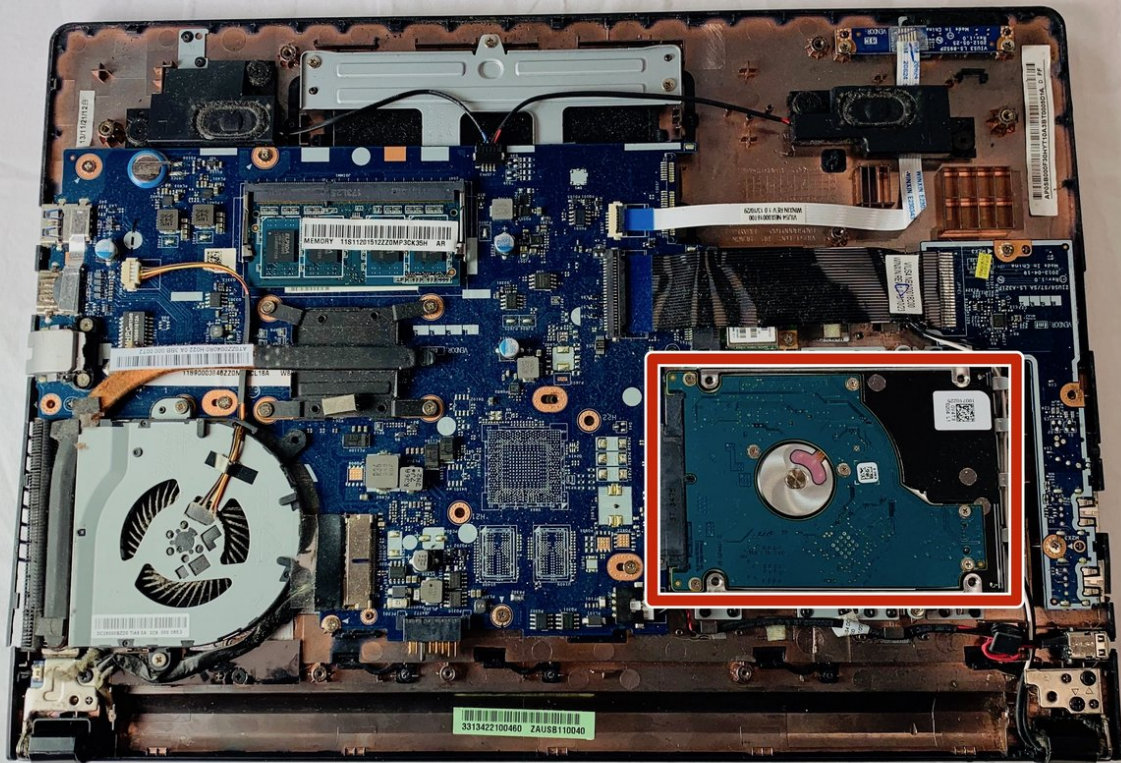




Lenovo Ideapad S415 Touch Hard Drive Replacement

How to replace the hard drive.

Written By: Casey Zhang



INTRODUCTION

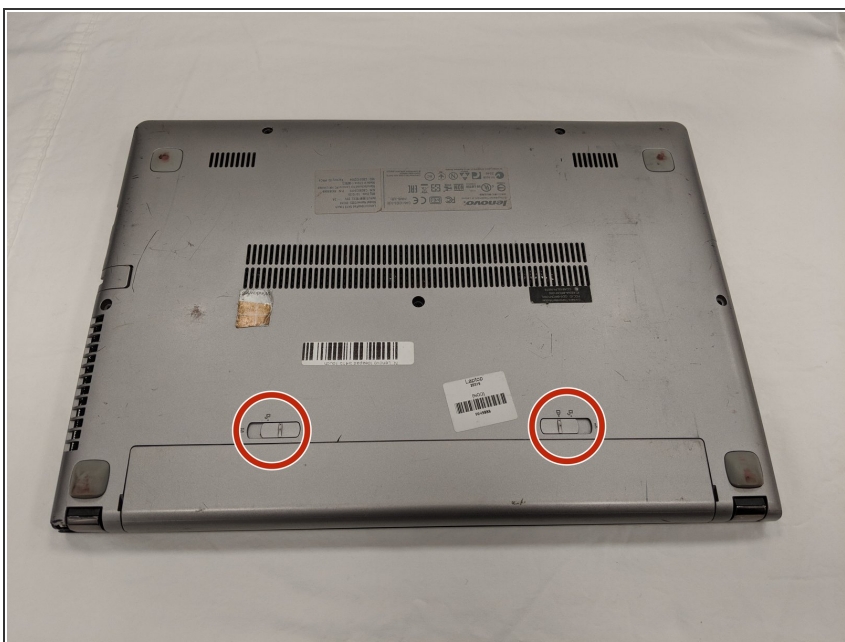
If your computer will not turn on, there may be a problem with the hard drive. This guide will help replace the hard drive in your laptop, and is moderately difficult. Make sure to have a Phillips #0 screwdriver on hand to achieve the steps in this guide.



TOOLS:

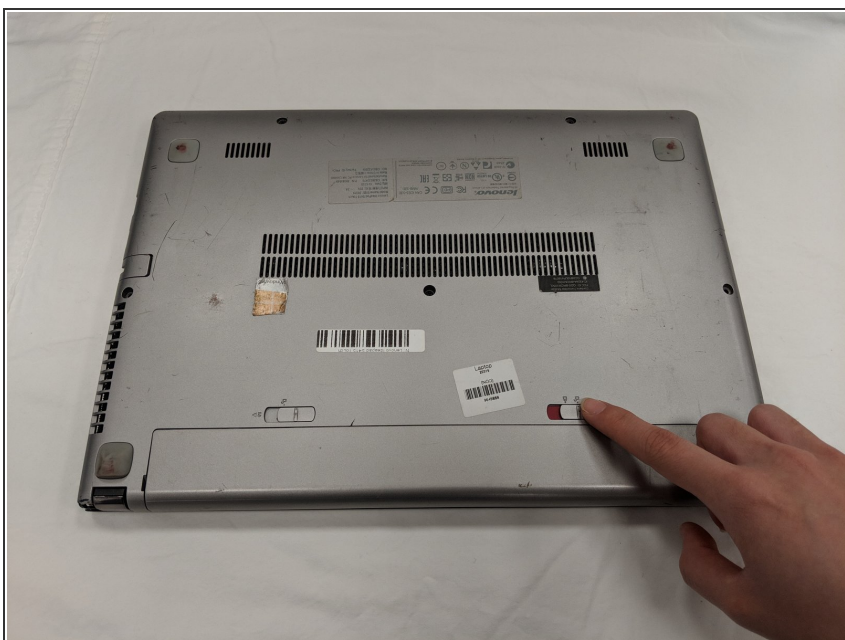
- [Phillips #0 Screwdriver](#) (1)
-

Step 1 — Battery



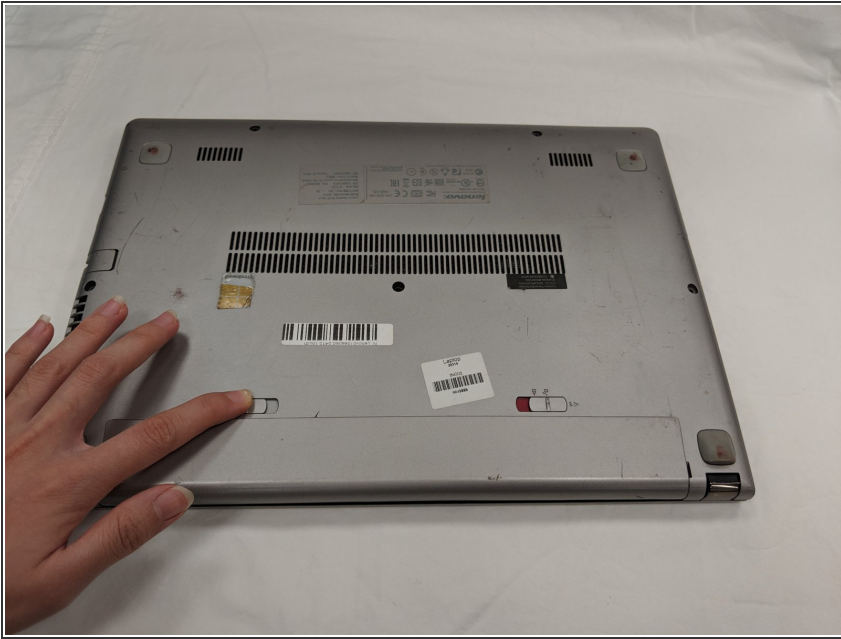
- Flip laptop over bottom side up.
- Locate the two battery release switches.

Step 2



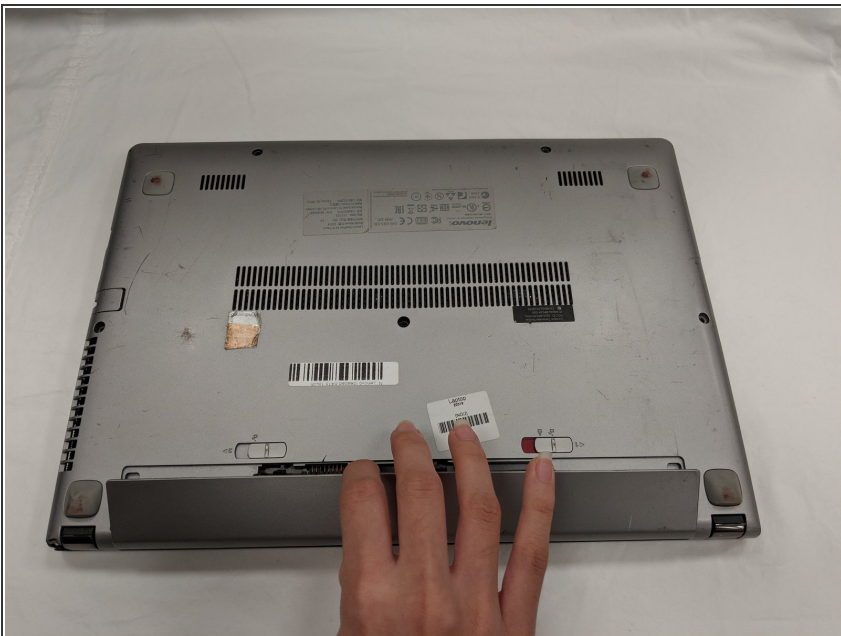
- Use your finger to push the battery release switch labeled "1." The red indicates that the switch is unlocked.

Step 3



- Use your finger to push the battery switch labeled "2."

Step 4



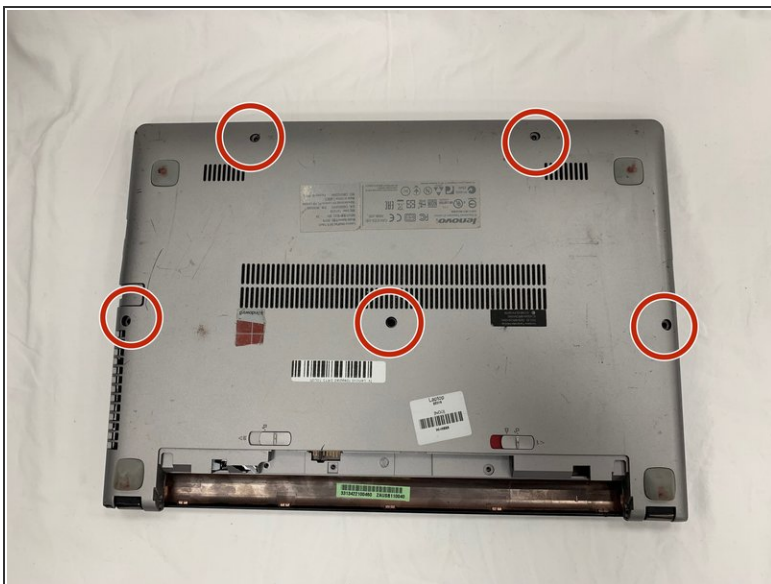
- Once both switches are unlocked, the battery will release.

Step 5



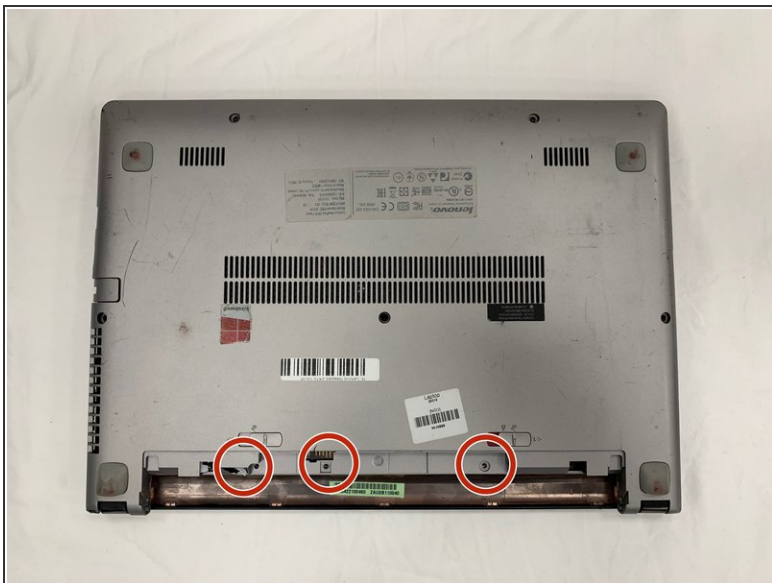
- ✦ When replacing the battery make sure the two protruding holes line up with the slot.
- Carefully remove the battery.

Step 6 — Hard Drive



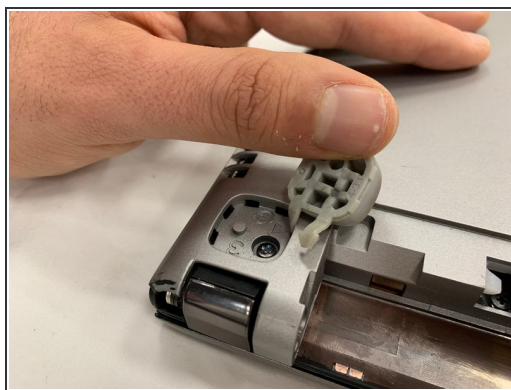
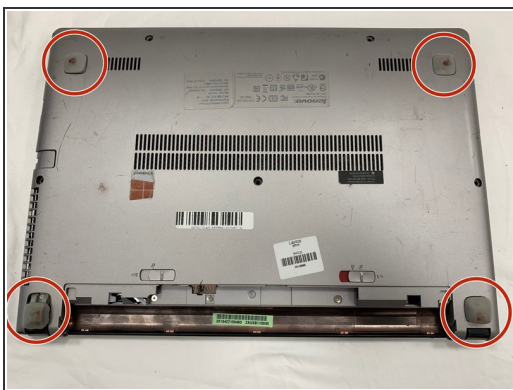
- Locate the five black screws on the back.
- Use a Phillips #0 screwdriver to remove all five black 6 mm screws.

Step 7



- Locate the three silver screws underneath the battery.
- Use the Phillips #0 screwdriver to remove all three 4 mm screws.

Step 8



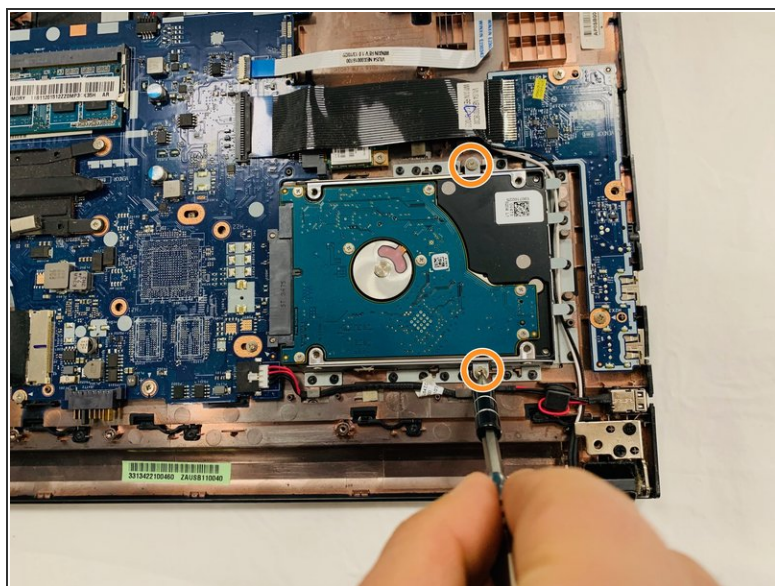
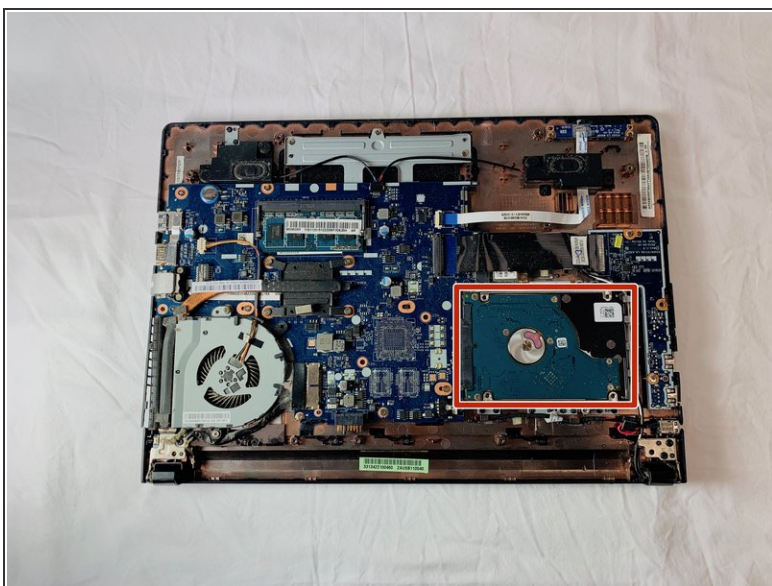
- Locate the four rubber stoppers near each corner of the laptop.
- Open up the stopper with your hands.
- Use the Phillips #0 screwdriver to remove the 6 mm screws underneath all four stoppers.

Step 9



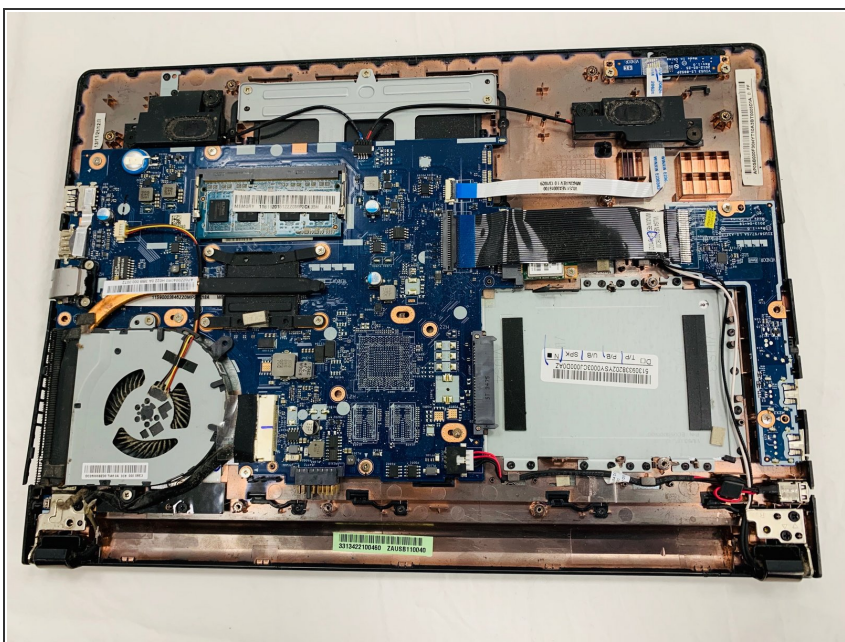
- Open the laptop carefully.

Step 10



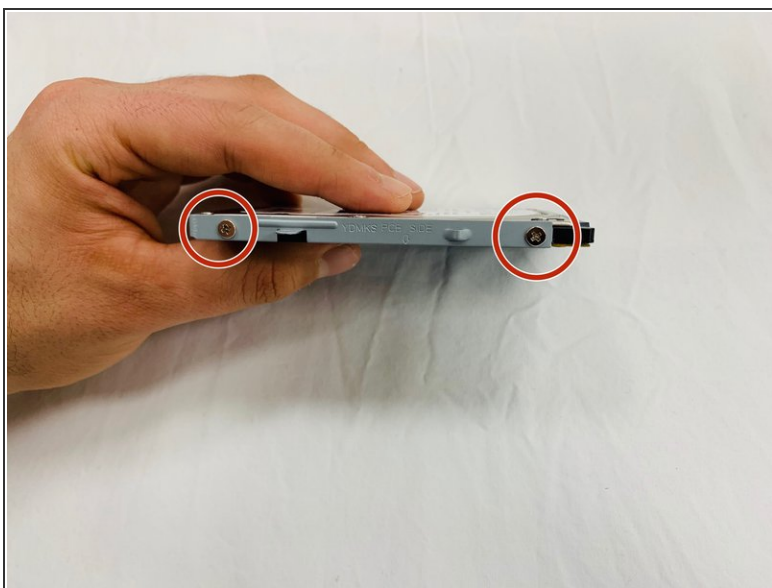
- Locate the hard drive.
- Use the Phillips #0 screwdriver to remove the two 4 mm screws that are holding the hard drive in place.

Step 11



- The hard drive is now removed from the laptop.

Step 12



- Once the hard drive is removed, locate the four screws that hold the metal frame to the hard drive.
- Use the Phillips #0 screwdriver to remove the 4 mm silver screws on all sides.

To reassemble your device, follow these instructions in reverse order.