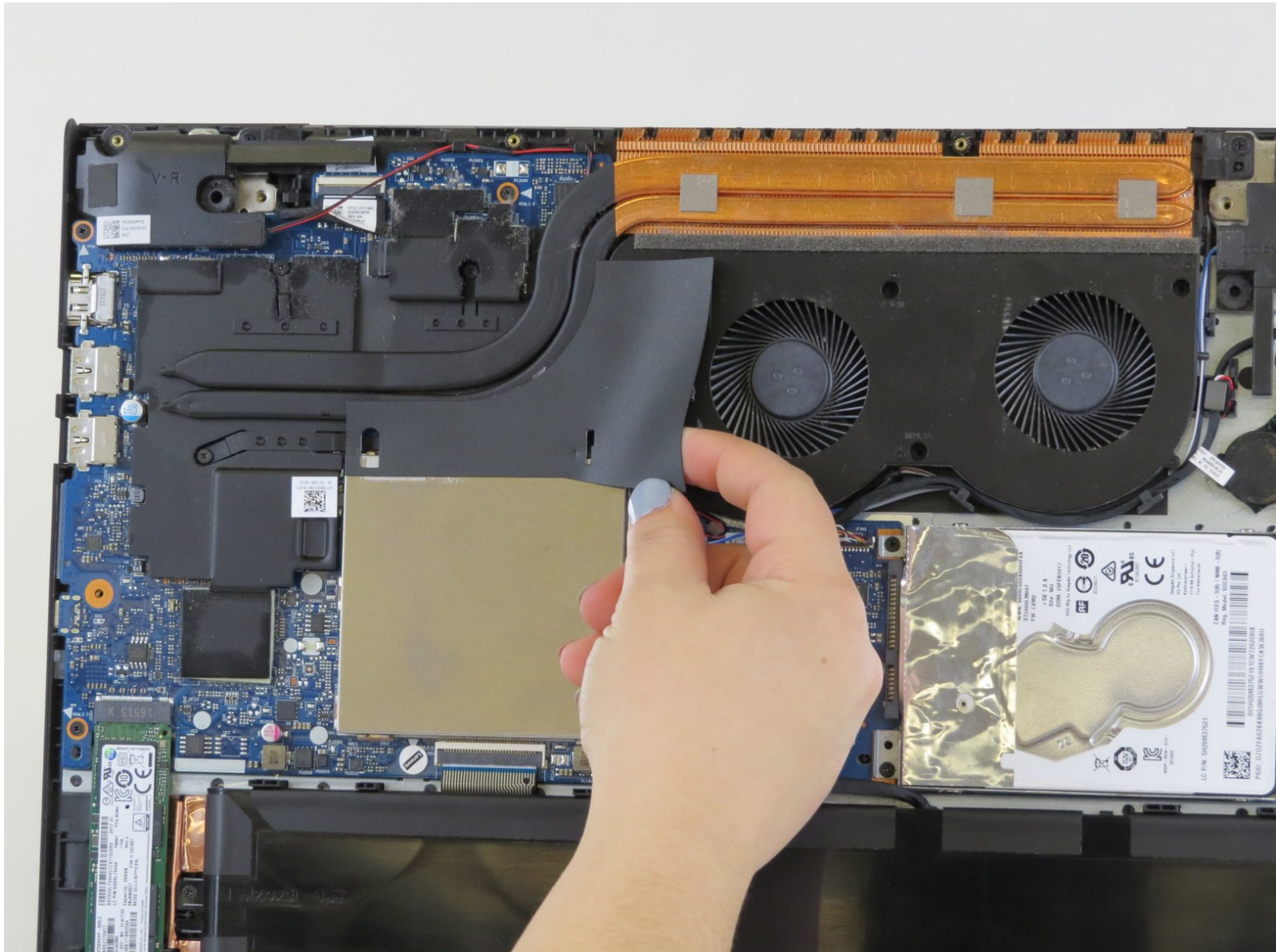




Lenovo Legion Y520-15IKBN RAM Replacement

This guide will teach you how to replace the RAM for Lenovo Legion Y520-15IKBN.

Written By: Noah J Michalek



INTRODUCTION

This guide will show you how to replace the RAM in the Lenovo Legion 520-IKBN. You would replace the RAM if computer is acting slower than it is or if your startup screen is a black screen.

TOOLS:

- [Phillips #00 Screwdriver](#) (1)
 - [Spudger](#) (1)
-

Step 1 — Battery



- ⚠ Ensure your device is completely OFF before performing this procedure.
- Remove the thirteen 6.5 mm screws from the bottom of the laptop using a Phillips #00 screwdriver.

Step 2



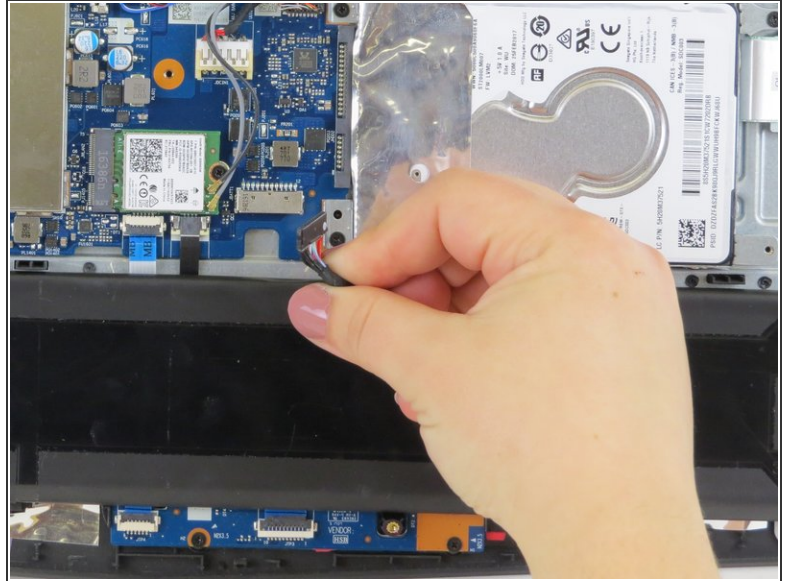
- Flip the laptop on its side and use a spudger or a credit card to pry the bottom cover off. To get a better grip you may want to open the laptop slightly.
- The bottom piece will make popping noises as it is pulled from the laptop.
- Remove the bottom cover from the laptop.
- ★ When reassembling make sure that the bottom piece clicks back into place on all sides of the laptop.

Step 3



- Remove the four 4 mm Phillips #00 screws holding the battery in place.

Step 4



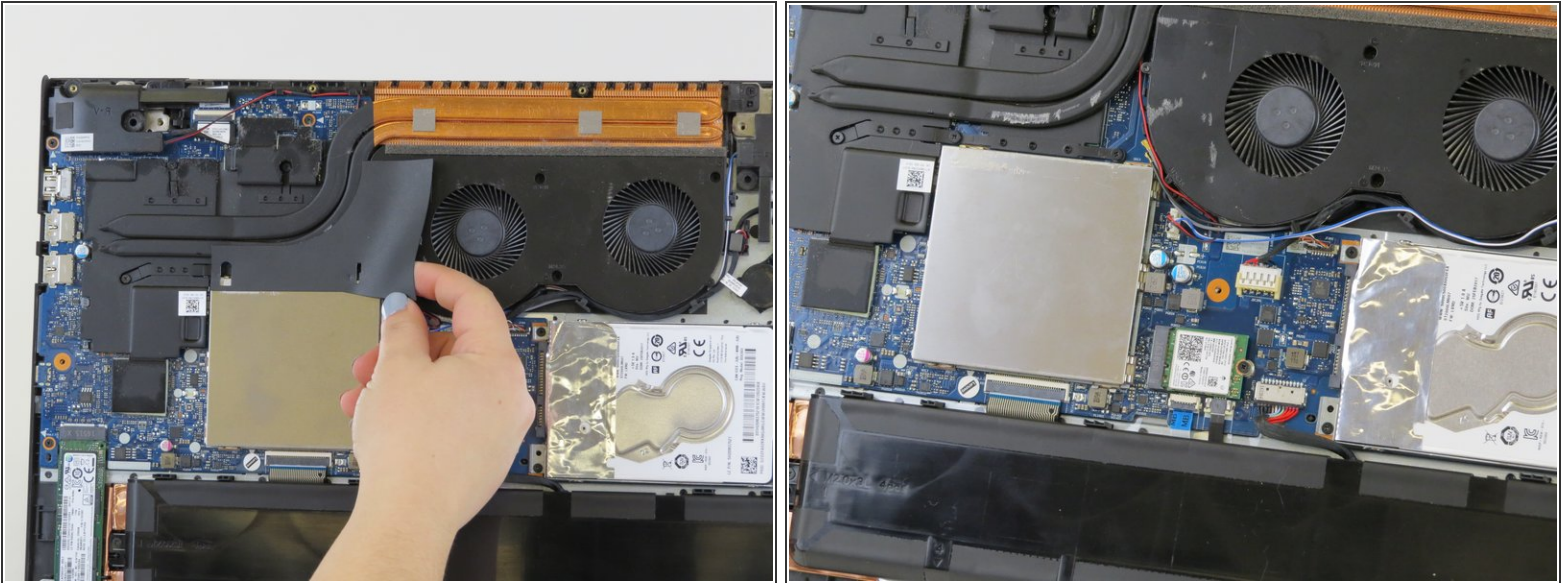
- Disconnect the battery connector by pulling the battery cable downwards towards the battery.
- ⚠ Do not pull on the socket itself or you risk damaging the motherboard.
- ⓘ If this is difficult, apply force and slowly wiggle the connector out of its socket. It should work its way out slowly.

Step 5



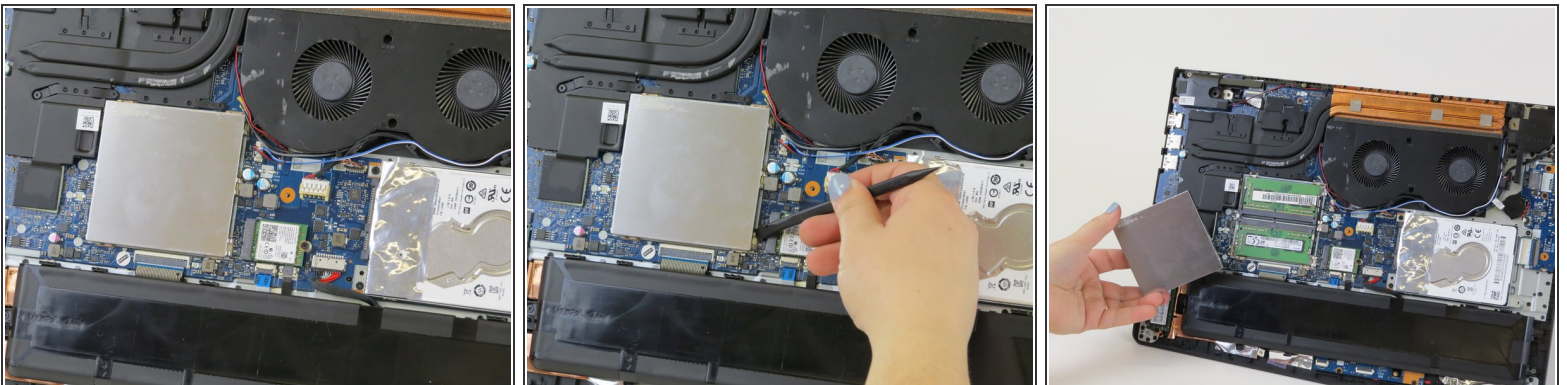
- Lift the battery out of the laptop body.

Step 6 — RAM



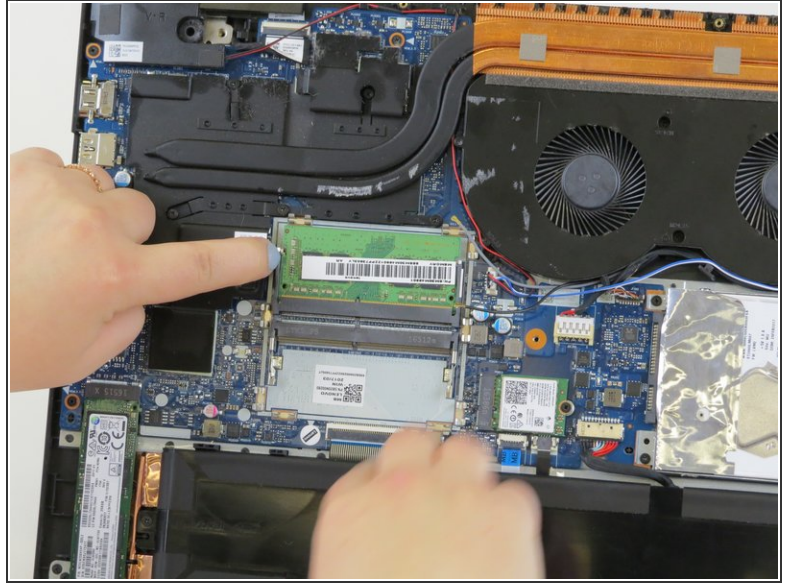
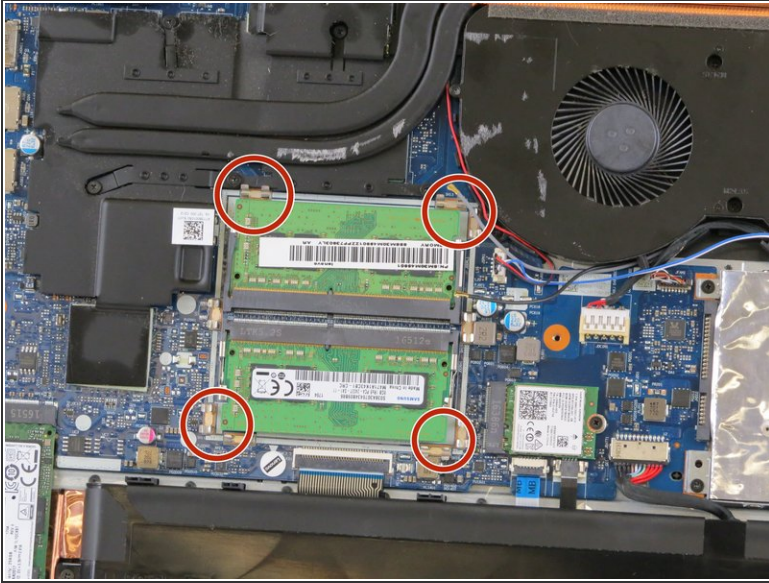
- There is a piece of plastic covering part of the RAM and the fan. You will need to remove this to get to the RAM.
- ⓘ You do not need to remove the battery for the replacement of RAM card.

Step 7



- There will be a silver square box next to the fan. Use a plastic spudger to pry the small tabs on the side that are holding the silver square on.

Step 8



- The RAM will now be exposed. There are two tabs holding each one of two RAM cards in place. They are on the sides of the RAM cards. Pull the tabs to release the cards.
- ☑ When putting the RAM back together, there are lines on the end of the RAM cards that need to line up.

To reassemble your device, follow these instructions in reverse order.