



Lenovo N21 Chromebook Battery Replacement

This guide will demonstrate how to remove and replace the battery in a Lenovo N21 Chromebook.

Written By: Jacob Taylor



INTRODUCTION

Once the keyboard and touch pad have been removed, the battery can be easily replaced by removing three screws and a connection cable.



TOOLS:

- [Phillips #00 Screwdriver](#) (1)
- [iFixit Opening Tools](#) (1)





PARTS:

- [Lenovo Chromebook 11 N21 Battery](#) (1)

Step 1 — Keyboard and Trackpad Panel



-  Power down the Chromebook before starting any repair.
-  Opening up your Chromebook voids the manufacturer warranty.
- Use a screwdriver to remove the six 5.0mm Phillips screws from the bottom housing of the Chromebook.

Step 2



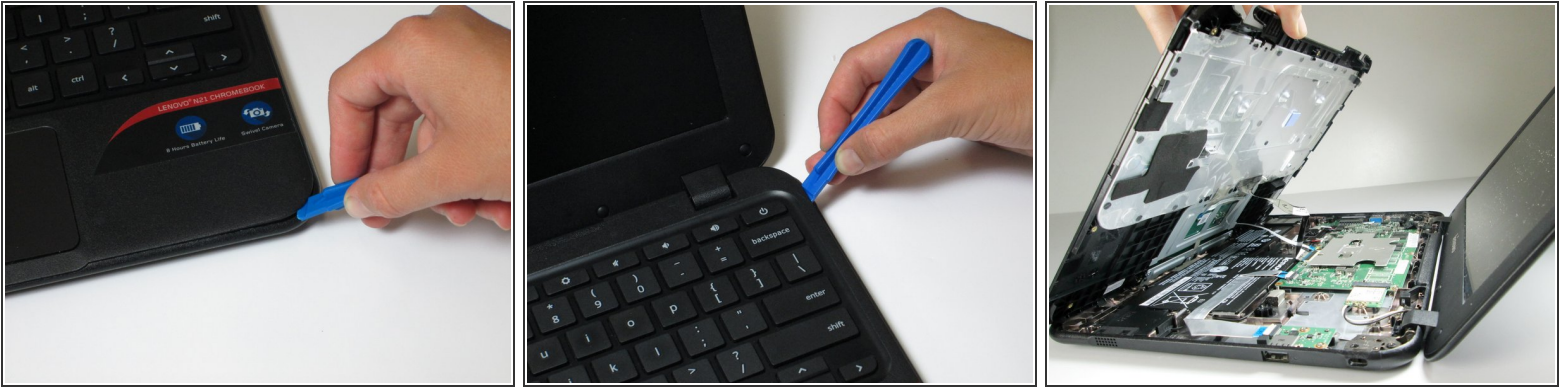
- Use a plastic opening tool to pry off the four rubber pegs from the bottom housing.

Step 3



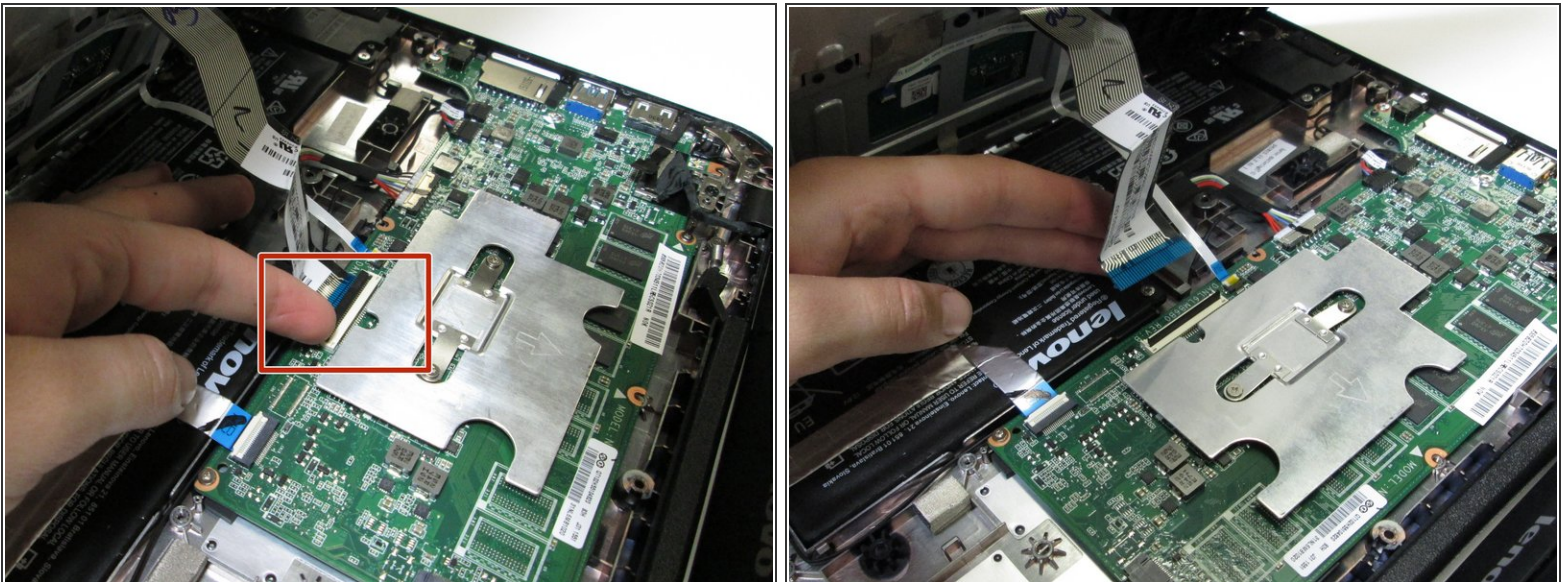
- Use a screwdriver to remove the four 5.0mm Phillips screws located under the rubber soles.

Step 4



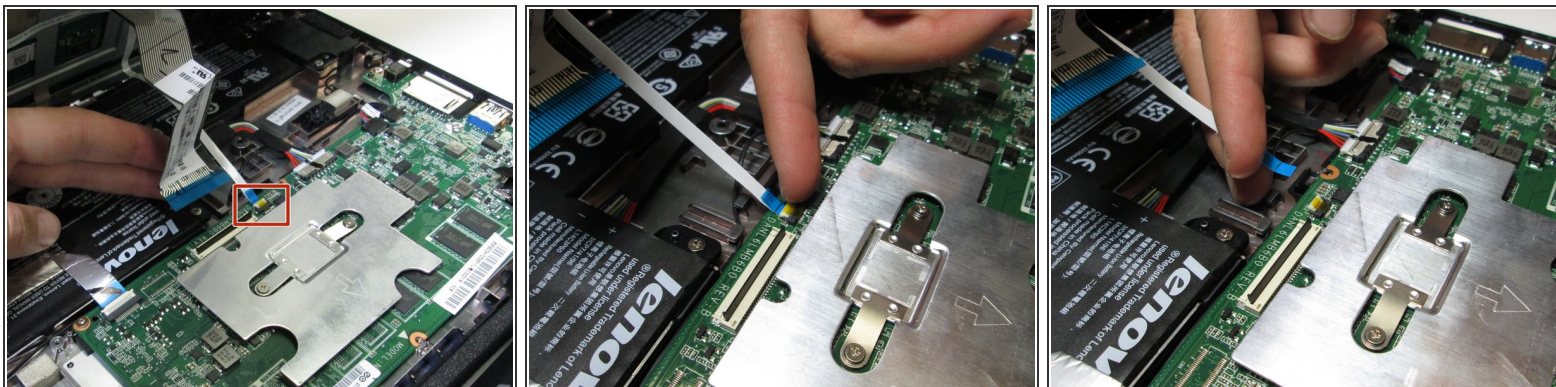
- Flip the laptop over and open the screen.
 - Gently pry the keyboard and trackpad panel away from the bottom housing using a plastic opening tool.
- ⚠ Once completely separated, do not immediately pull the panel completely away from the bottom housing. There are wires that are still connecting the panel to the rest of the internals of the Chromebook.

Step 5



- Disconnect the keyboard ribbon cable by lifting the ZIF connector lock with a plastic opening tool or fingernail and gently pulling the ribbon cable straight out of its socket.

Step 6



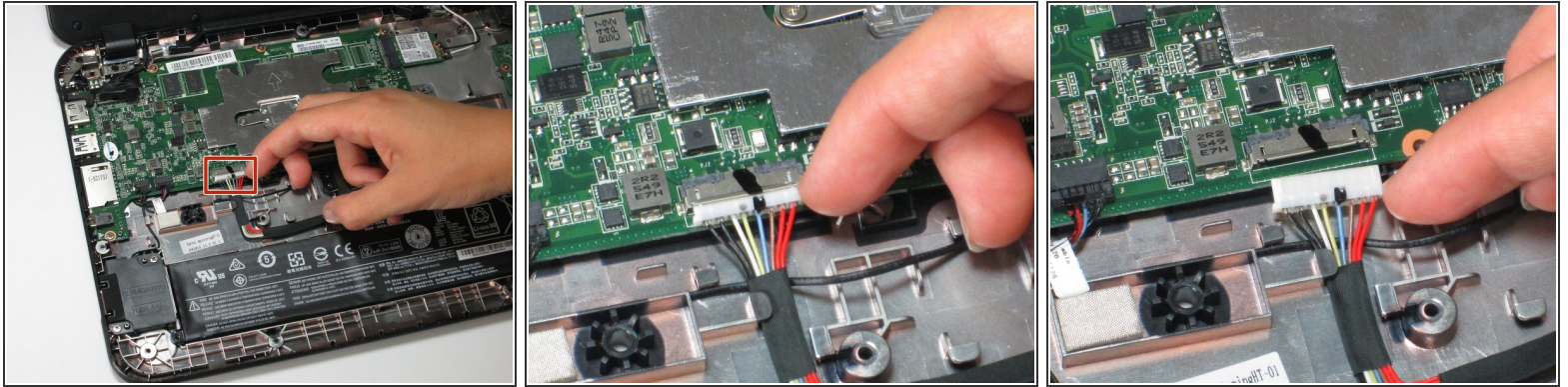
- Disconnect the trackpad ribbon cable by lifting the ZIF connector lock with a small prying tool or fingernail and gently pulling the ribbon cable straight out of its socket.

Step 7



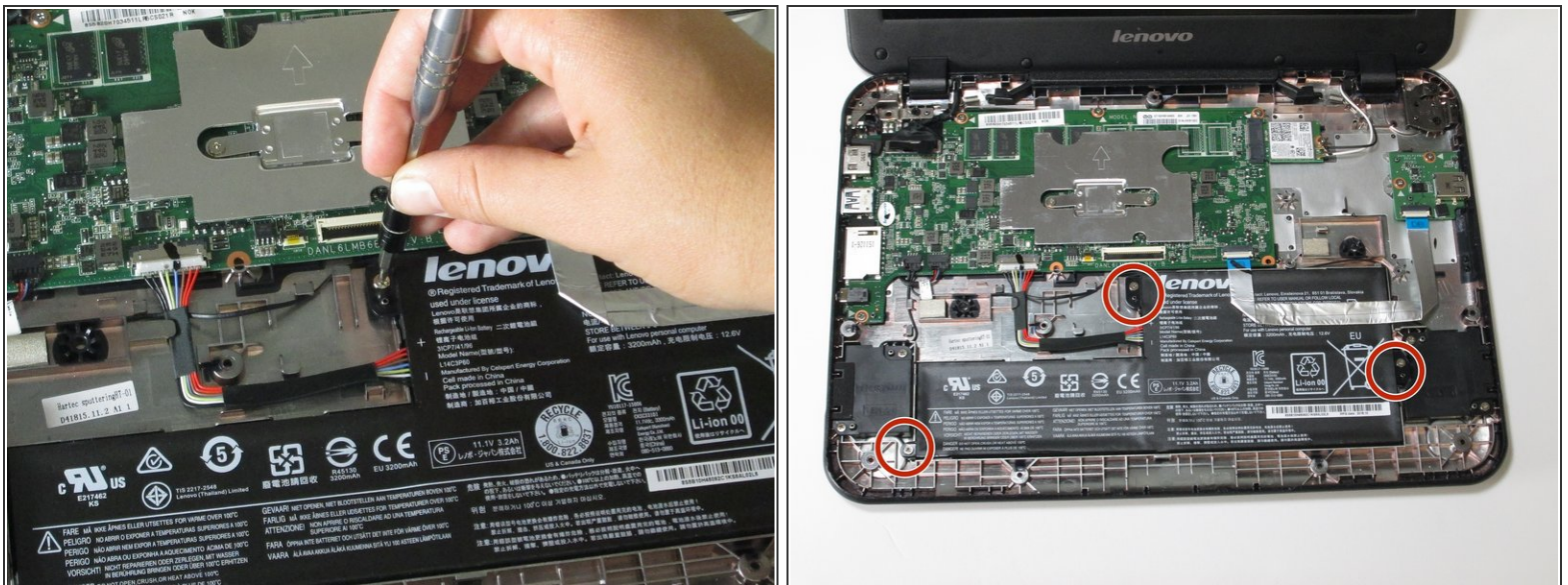
- Remove the keyboard and trackpad panel away from the device.

Step 8 — Battery



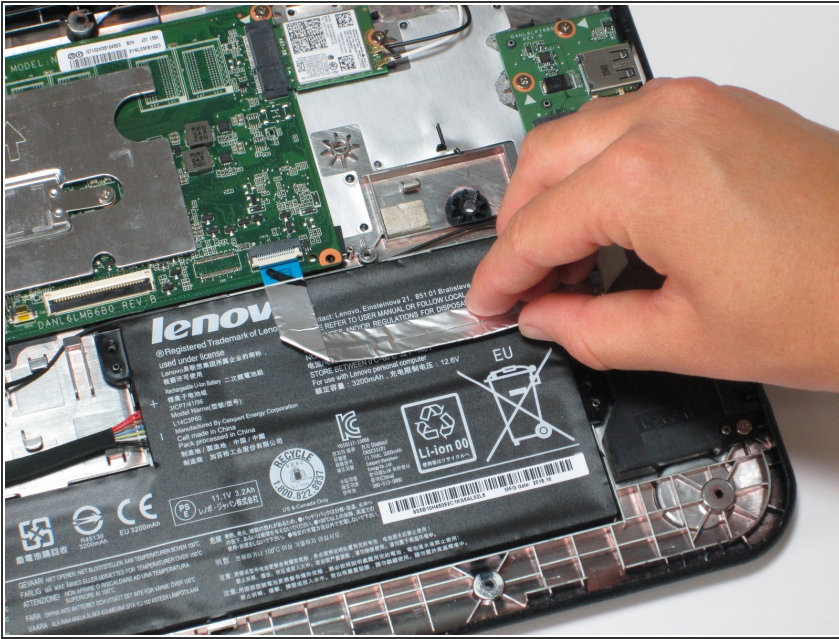
- Disconnect the white charging cable connectors by pulling straight down on the connector.

Step 9



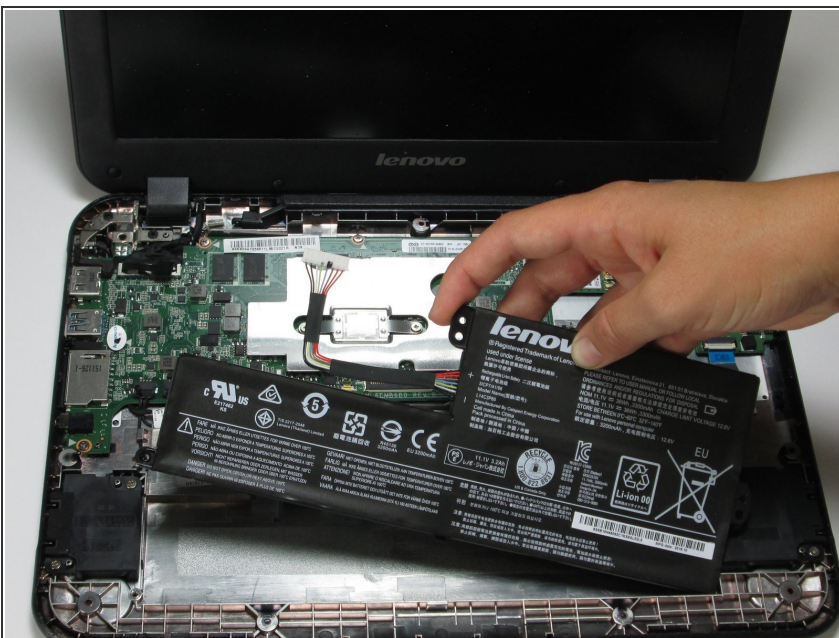
- Use a Phillips screwdriver to remove the three 3mm screws located along the edge of the battery.

Step 10



- Peel up on the silver cable enough to remove the adhesive to the battery.
- ⚠ When moving the adhesive cable, be careful not to disconnect or damage the cable and motherboard.

Step 11



- Remove the battery by pulling back and up.

To reassemble your device, follow these instructions in reverse order.