



Lenovo N21 Chromebook Keyboard and Trackpad Panel Replacement

How to remove the keyboard and trackpad panel of the Lenovo N21 Chromebook for replacement or to access the interior of the device.

Written By: Alex Cass



INTRODUCTION

To replace the trackpad or keyboard of the Lenovo N21 Chromebook, the whole panel including both parts will need to be replaced.

If you are trying to replace other parts within the Lenovo N21 Chromebook, the trackpad and keyboard panel will have to be removed from the bottom housing in order to access these interior parts.



TOOLS:

- [Phillips #00 Screwdriver](#) (1)
- [iFixit Opening Tools](#) (1)



PARTS:

- [Lenovo Chromebook 11 N21 Palmrest Keyboard Touchpad Assembly](#) (1)
- [Lenovo Chromebook 11 N21 Palmrest Keyboard](#) (1)
- [Lenovo Chromebook N21 Touchpad](#) (1)

Step 1 — Keyboard and Trackpad Panel



- ⚠ Power down the Chromebook before starting any repair.
- ⚠ Opening up your Chromebook voids the manufacturer warranty.
- Use a screwdriver to remove the six 5.0mm Phillips screws from the bottom housing of the Chromebook.

Step 2



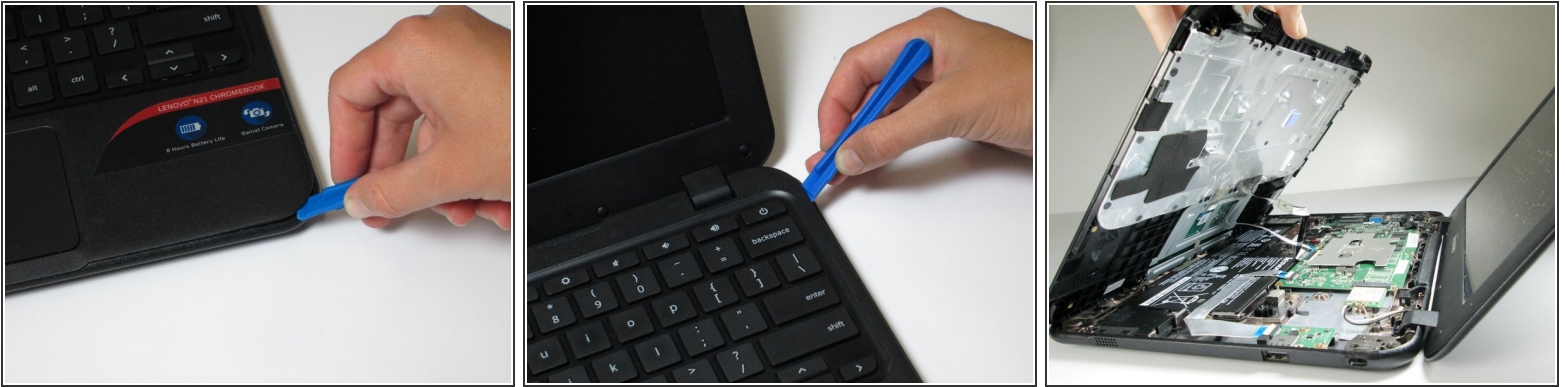
- Use a plastic opening tool to pry off the four rubber pegs from the bottom housing.

Step 3



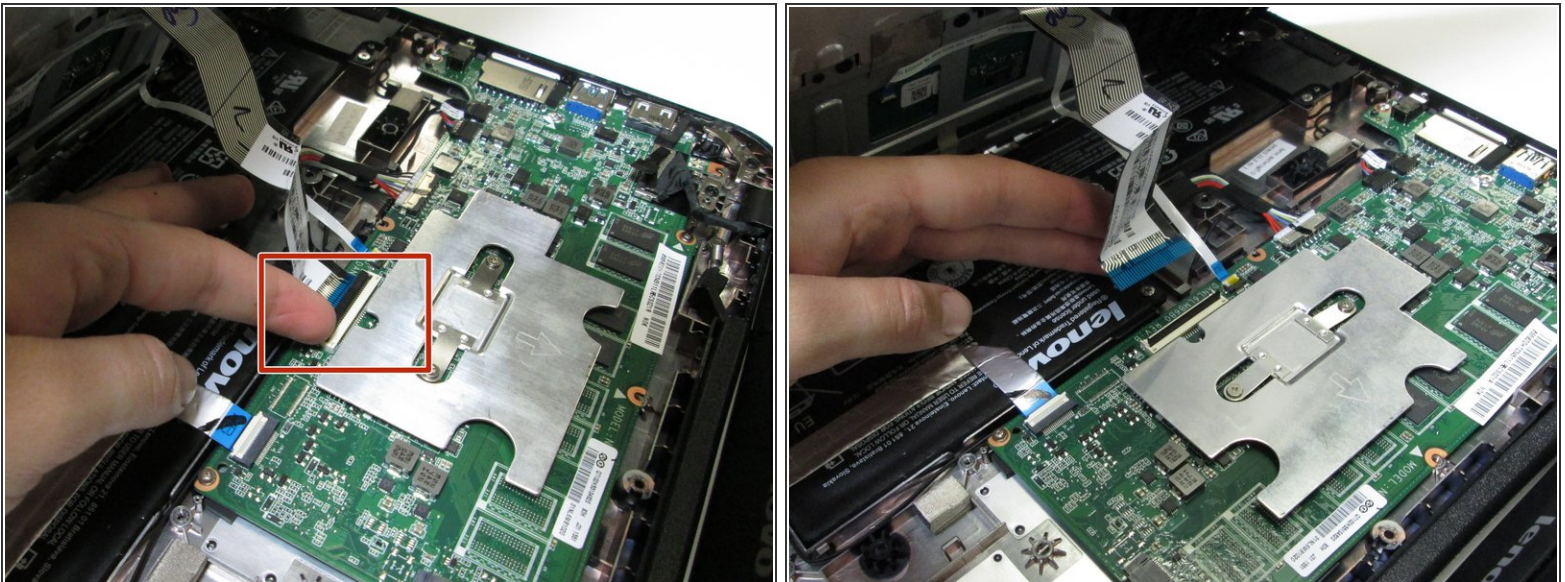
- Use a screwdriver to remove the four 5.0mm Phillips screws located under the rubber soles.

Step 4



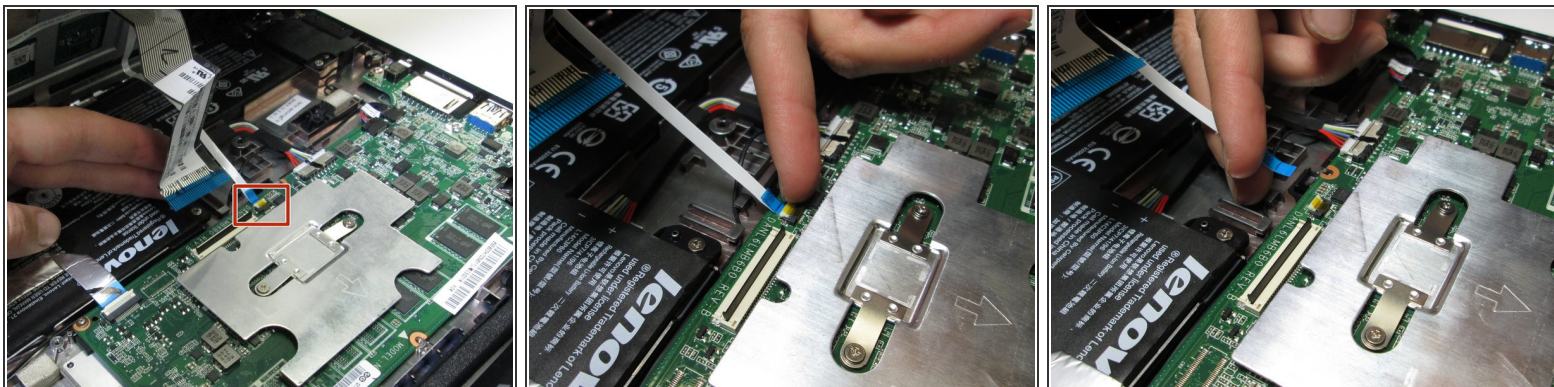
- Flip the laptop over and open the screen.
 - Gently pry the keyboard and trackpad panel away from the bottom housing using a plastic opening tool.
- ⚠ Once completely separated, do not immediately pull the panel completely away from the bottom housing. There are wires that are still connecting the panel to the rest of the internals of the Chromebook.

Step 5



- Disconnect the keyboard ribbon cable by lifting the ZIF connector lock with a plastic opening tool or fingernail and gently pulling the ribbon cable straight out of its socket.

Step 6



- Disconnect the trackpad ribbon cable by lifting the ZIF connector lock with a small prying tool or fingernail and gently pulling the ribbon cable straight out of its socket.

Step 7



- Remove the keyboard and trackpad panel away from the device.

To reassemble your device, follow these instructions in reverse order.