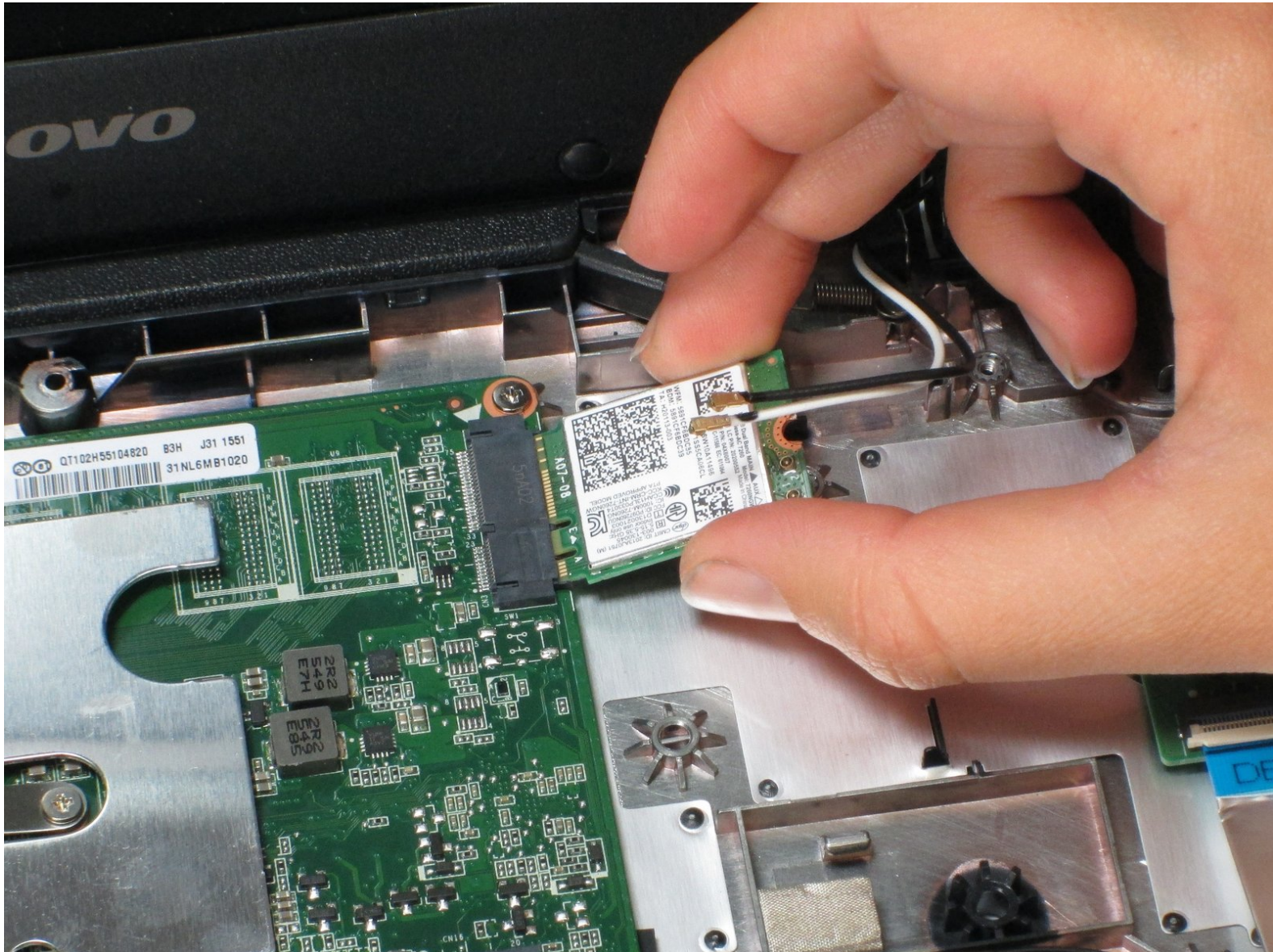




Lenovo N21 Chromebook WiFi Card Replacement

How to replace the WiFi card of a Lenovo N21 Chromebook.

Written By: Alex Cass



INTRODUCTION

This is a very simple replacement that involves taking apart the Lenovo N21 Chromebook. Once apart, the WiFi card can be swapped with another very easily. Note that the only issue may be an incorrect replacement of the wires connected to the card. Make sure the white and black wires are replaced in the correct order before putting the laptop together again.



TOOLS:

- [iFixit Opening Tools](#) (1)
- [Phillips #00 Screwdriver](#) (1)



PARTS:

- [Lenovo Chromebook 11 N21 Wi-Fi Card](#) (1)

Step 1 — Keyboard and Trackpad Panel



- ⚠ Power down the Chromebook before starting any repair.
- ⚠ Opening up your Chromebook voids the manufacturer warranty.
- Use a screwdriver to remove the six 5.0mm Phillips screws from the bottom housing of the Chromebook.

Step 2



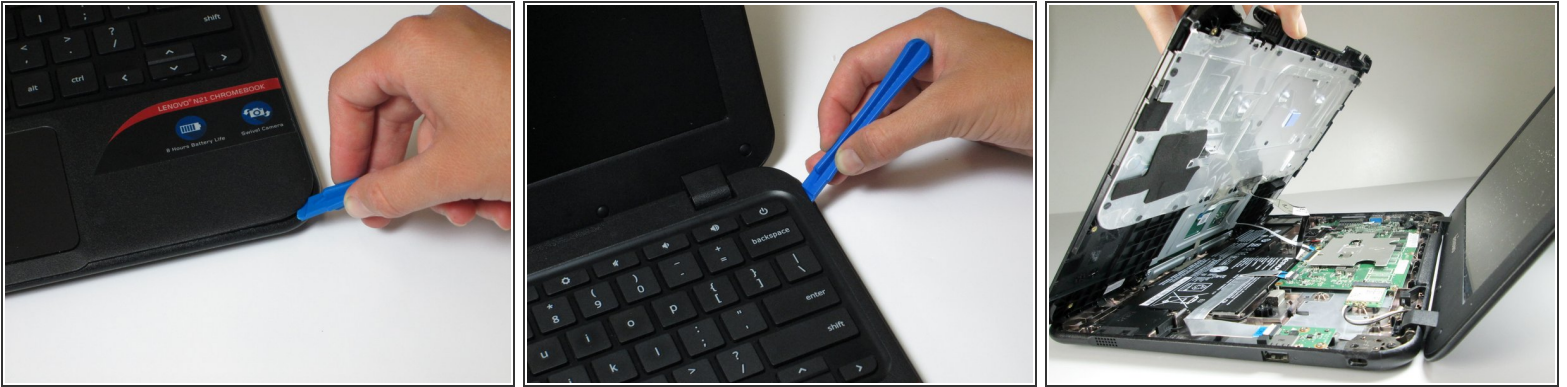
- Use a plastic opening tool to pry off the four rubber pegs from the bottom housing.

Step 3



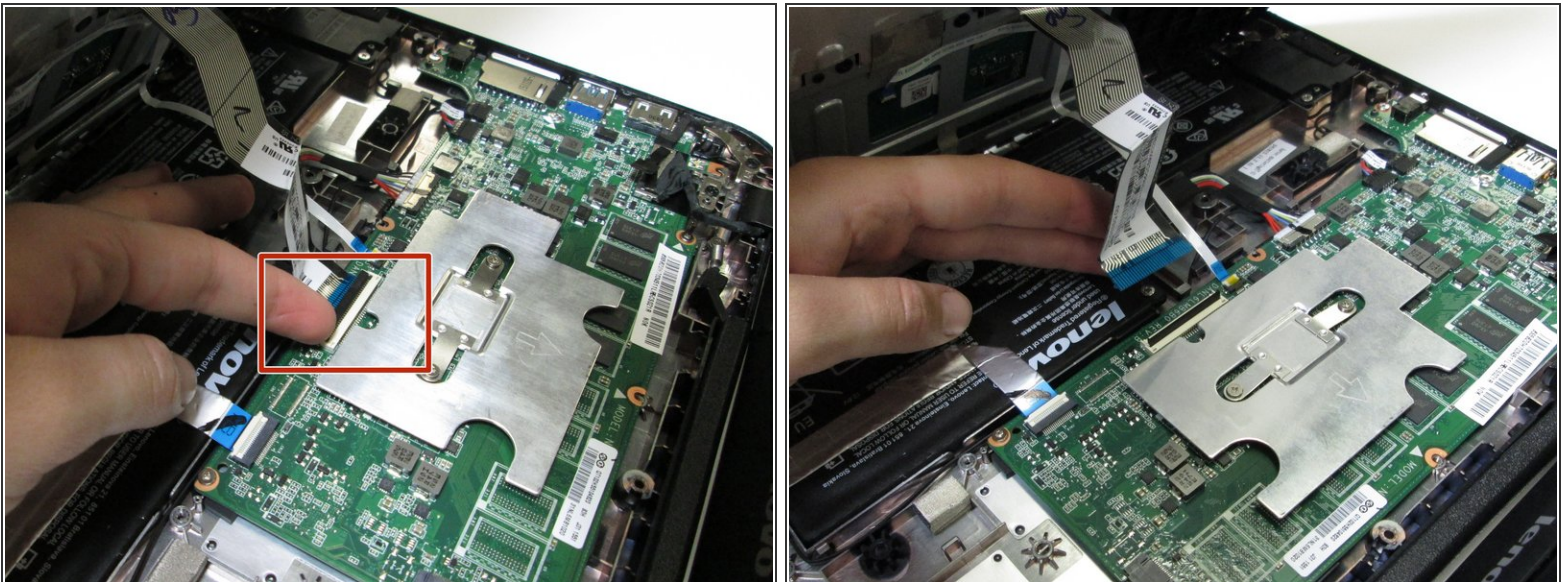
- Use a screwdriver to remove the four 5.0mm Phillips screws located under the rubber soles.

Step 4



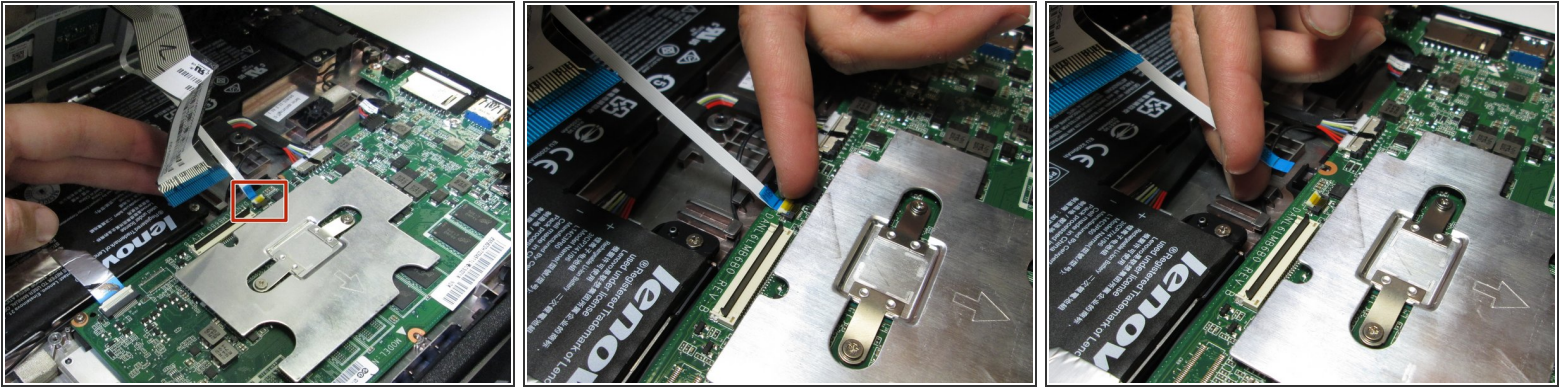
- Flip the laptop over and open the screen.
 - Gently pry the keyboard and trackpad panel away from the bottom housing using a plastic opening tool.
- ⚠ Once completely separated, do not immediately pull the panel completely away from the bottom housing. There are wires that are still connecting the panel to the rest of the internals of the Chromebook.

Step 5



- Disconnect the keyboard ribbon cable by lifting the ZIF connector lock with a plastic opening tool or fingernail and gently pulling the ribbon cable straight out of its socket.

Step 6



- Disconnect the trackpad ribbon cable by lifting the ZIF connector lock with a small prying tool or fingernail and gently pulling the ribbon cable straight out of its socket.

Step 7



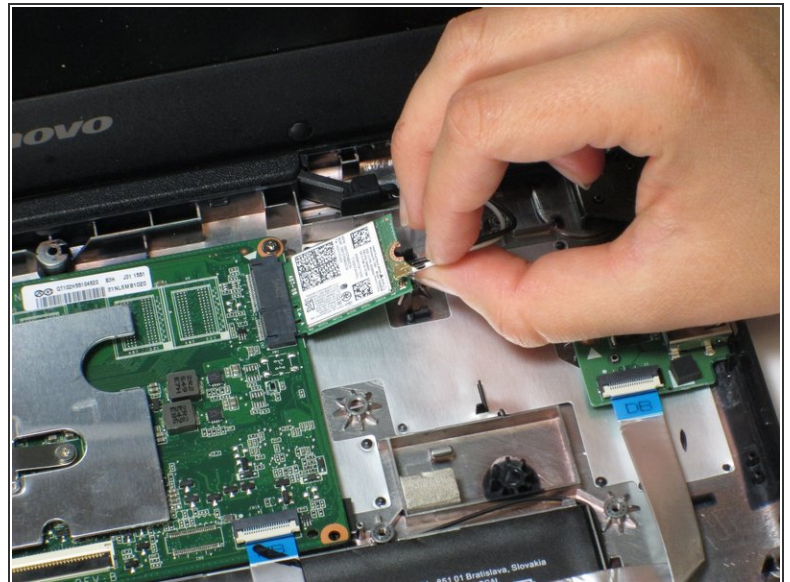
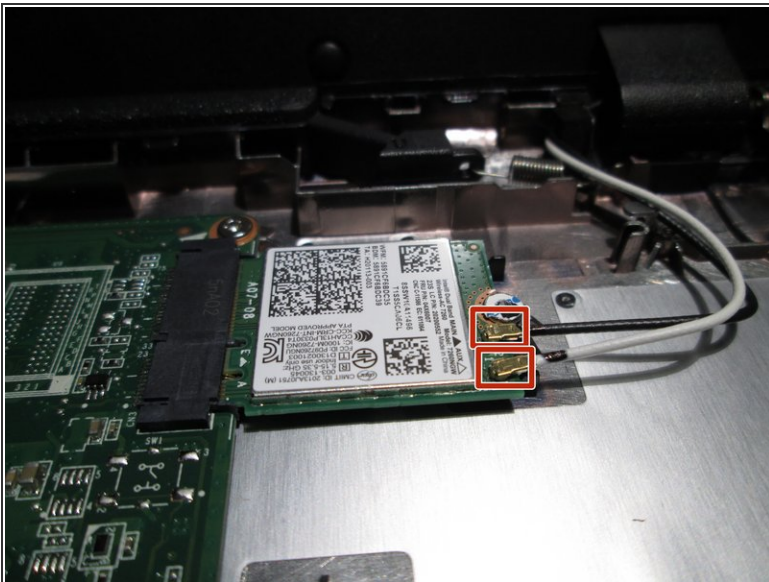
- Remove the keyboard and trackpad panel away from the device.

Step 8 — WiFi Card



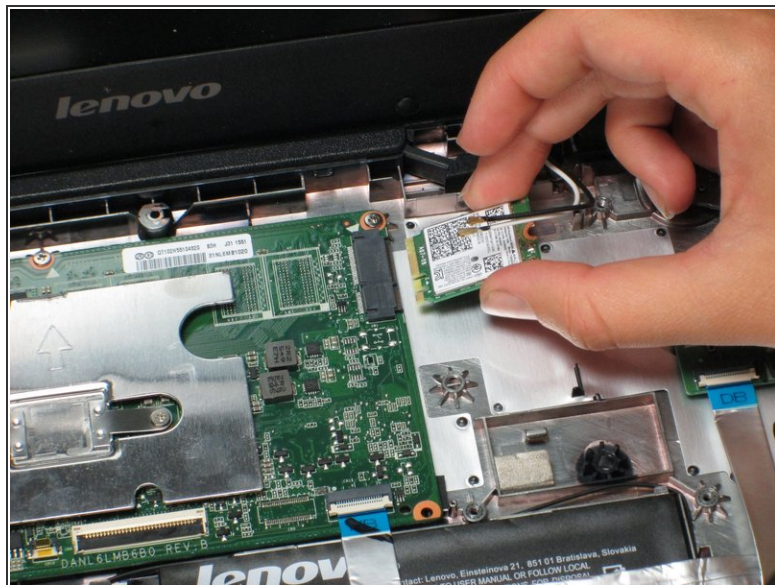
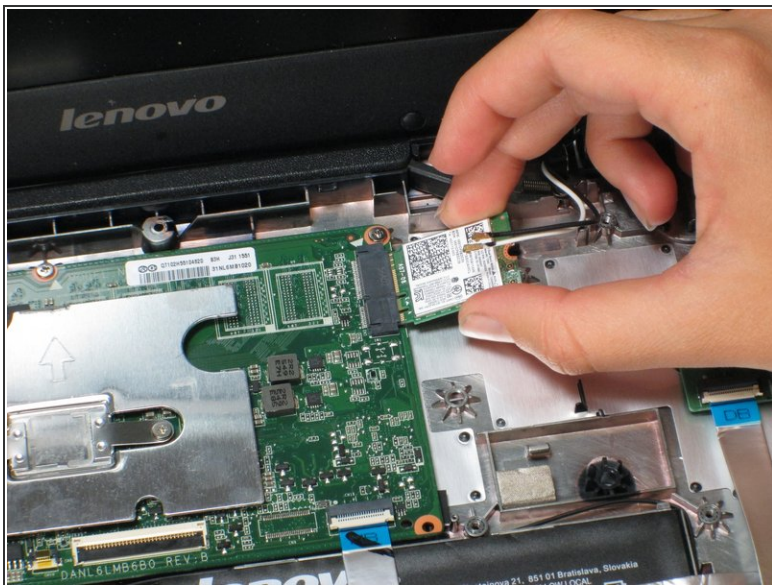
- Use a screwdriver to remove the single 3mm Phillips screw that is holding the WiFi card in place.

Step 9



- Remove the black and white wires attached to WiFi card by gently lifting them upwards.
- ☑ When re-attaching the wires, make sure they are in the correct placement. You do not want to switch the black and white wires.

Step 10



- Remove the WiFi card by pulling it straight out of its connector.
- ⓘ Keep the WiFi card horizontal and pull straight back to avoid causing the part harm.

To reassemble your device, follow these instructions in reverse order.