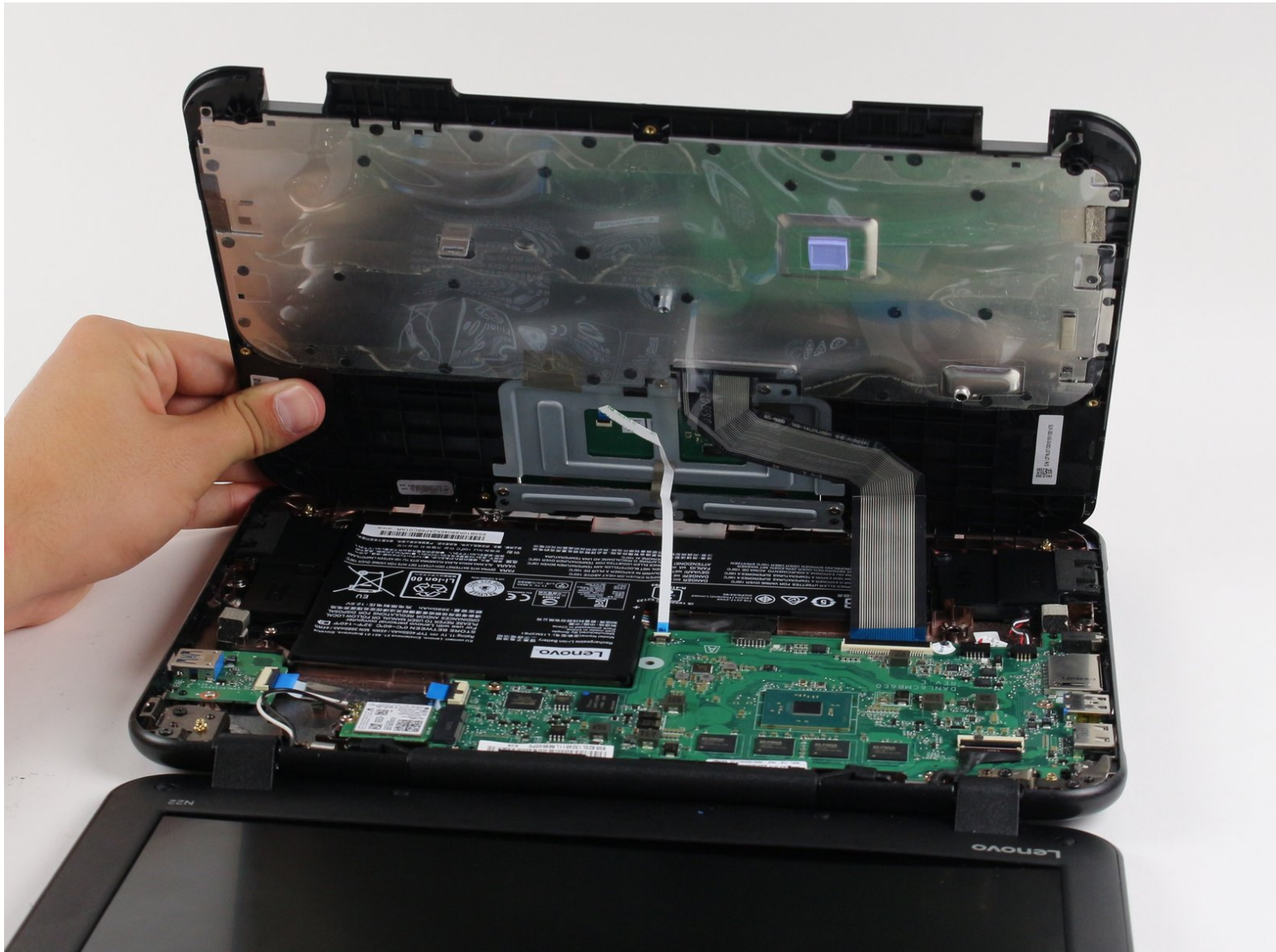




Lenovo N22 Chromebook Keyboard Replacement

Replacement of the Lenovo N22 Chromebook Keyboard

Written By: Jackson Tucker



INTRODUCTION

Through this guide, you will be able to remove the Chromebook's keyboard from the back casing and expose the battery and motherboard underneath. The keyboard may need to be replaced if several keys are unresponsive, the keyboard as a whole is unresponsive, or the mouse/touchpad is unresponsive.



TOOLS:

- [iFixit Opening Tools](#) (1)
- [Phillips #1 Screwdriver](#) (1)



PARTS:

- [Lenovo Chromebook 11 N22 Palmrest Keyboard Touchpad Assembly](#) (1)
- [Lenovo Chromebook 11 N22 Palmrest Keyboard](#) (1)
- [Lenovo Chromebook 11 N22 Touchpad](#) (1)

Step 1 — Keyboard



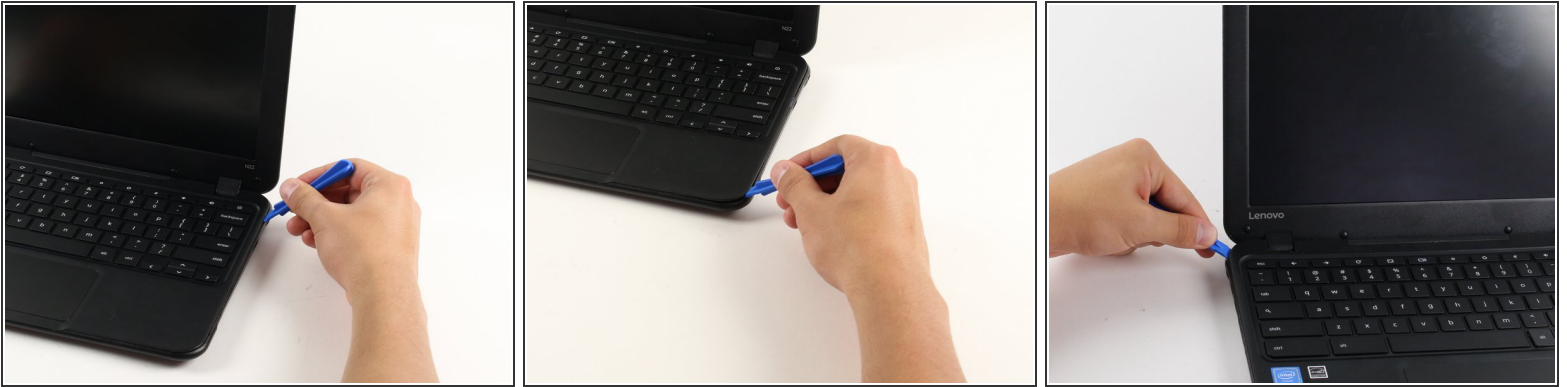
Power down the Chromebook before starting the repair.



Opening the Chromebook voids the manufacturer warranty.

- Flip the Chromebook so that the bottom is facing up.
- Use a Phillips #1 screwdriver to remove the six 6.6 mm screws on the bottom.
- Use a spudger to remove each of the 4 rubber feet.
- Use a Phillips #1 screwdriver to remove the four additional screws under the rubber feet.

Step 2



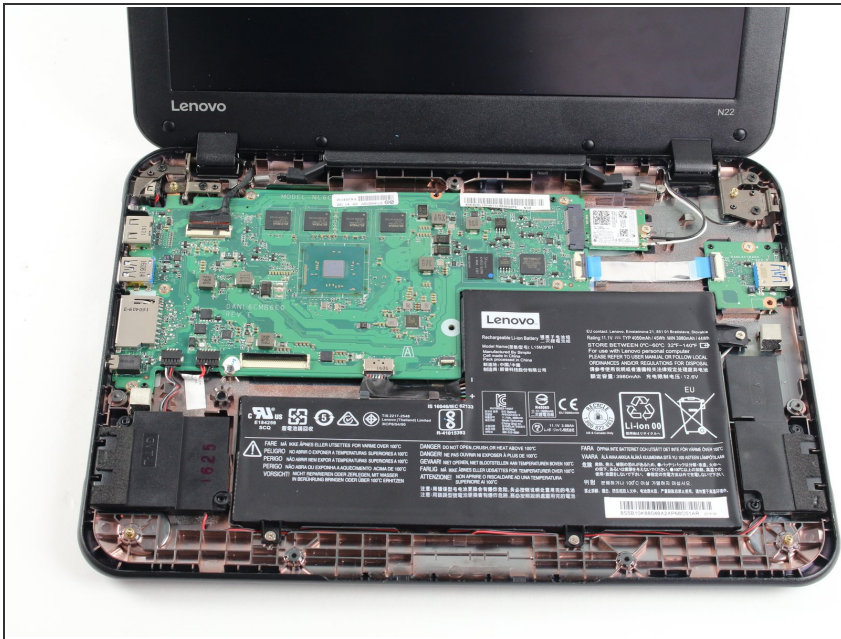
- Flip the Chromebook back over and open the screen.
 - Wedge the plastic opening tool between the keyboard and the bottom of the Chromebook.
 - Run the plastic opening tool along the seam between the keyboard and the bottom of the Chromebook until the keyboard moves freely. Several tabs will pop out.
- i** It is normal for the tabs to make a loud click when released. The corner tabs will be harder to release than the others and will make a louder click.

Step 3



- Once the keyboard is released, grab the two top corners closest to the screen and slowly lift the keyboard up.
- ⚠ Do not lift the keyboard quickly or you might break the two cables that connect the keyboard to the motherboard.
- Disconnect the cables by lifting up the retaining flaps on the black ZIF connectors.
- Slowly pull the cables up and out of the connectors.

Step 4



- Lift the keyboard up and off the back panel, exposing the motherboard and battery.

To reassemble your device, follow these instructions in reverse order.