



Lenovo N22 Chromebook Screen Replacement

A guide for replacement and removal of the laptops's LCD screen.

Written By: Rothanak Prak-Austin



INTRODUCTION

This guide outlines how to pry off the screen casing and unscrew the LCD screen. The screen may need to be replaced if it is cracked, or fails to display an image. The screen must be removed to access the display connector if it is loose or detached.



TOOLS:

- [Phillips #1 Screwdriver](#) (1)
- [iFixit Opening Tools](#) (1)
- [Heavy-Duty Spudger](#) (1)



PARTS:

- [Lenovo Chromebook N22 11.6" LCD](#) (1)
- [Lenovo Chromebook 11 N22 LCD Bezel](#) (1)

Step 1 — Keyboard



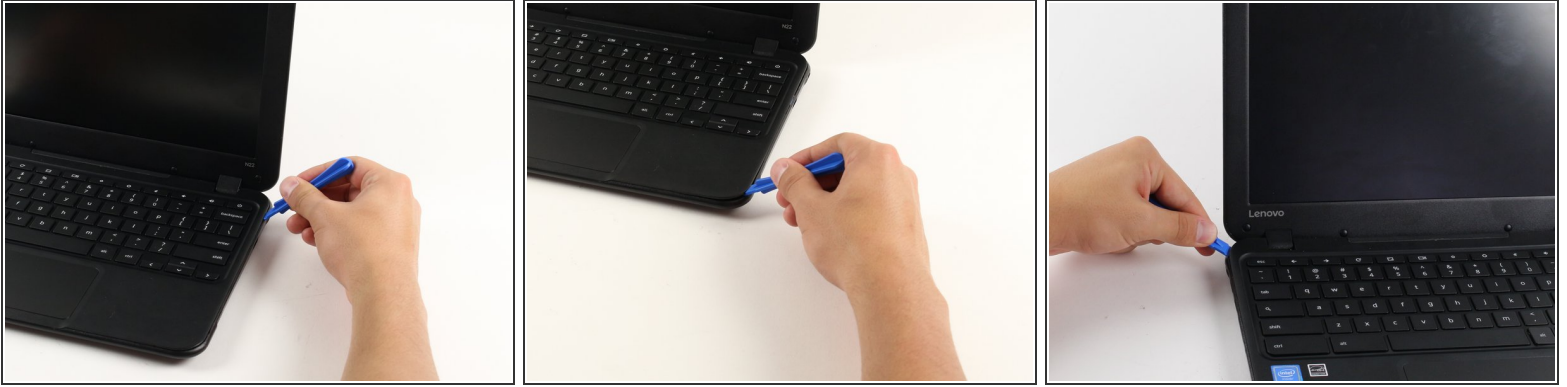
Power down the Chromebook before starting the repair.



Opening the Chromebook voids the manufacturer warranty.

- Flip the Chromebook so that the bottom is facing up.
- Use a Phillips #1 screwdriver to remove the six 6.6 mm screws on the bottom.
- Use a spudger to remove each of the 4 rubber feet.
- Use a Phillips #1 screwdriver to remove the four additional screws under the rubber feet.

Step 2



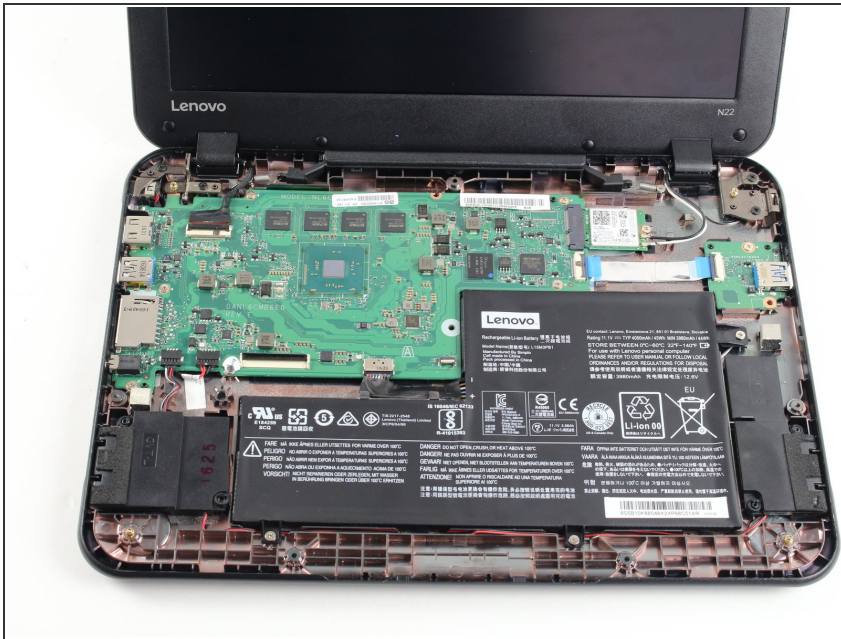
- Flip the Chromebook back over and open the screen.
 - Wedge the plastic opening tool between the keyboard and the bottom of the Chromebook.
 - Run the plastic opening tool along the seam between the keyboard and the bottom of the Chromebook until the keyboard moves freely. Several tabs will pop out.
- i** It is normal for the tabs to make a loud click when released. The corner tabs will be harder to release than the others and will make a louder click.

Step 3



- Once the keyboard is released, grab the two top corners closest to the screen and slowly lift the keyboard up.
- ⚠ Do not lift the keyboard quickly or you might break the two cables that connect the keyboard to the motherboard.
- Disconnect the cables by lifting up the retaining flaps on the black ZIF connectors.
- Slowly pull the cables up and out of the connectors.

Step 4



- Lift the keyboard up and off the back panel, exposing the motherboard and battery.

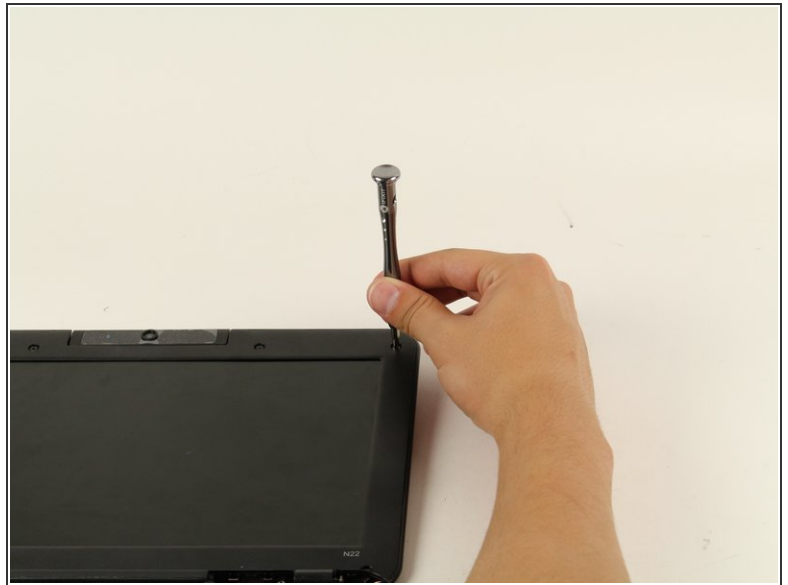
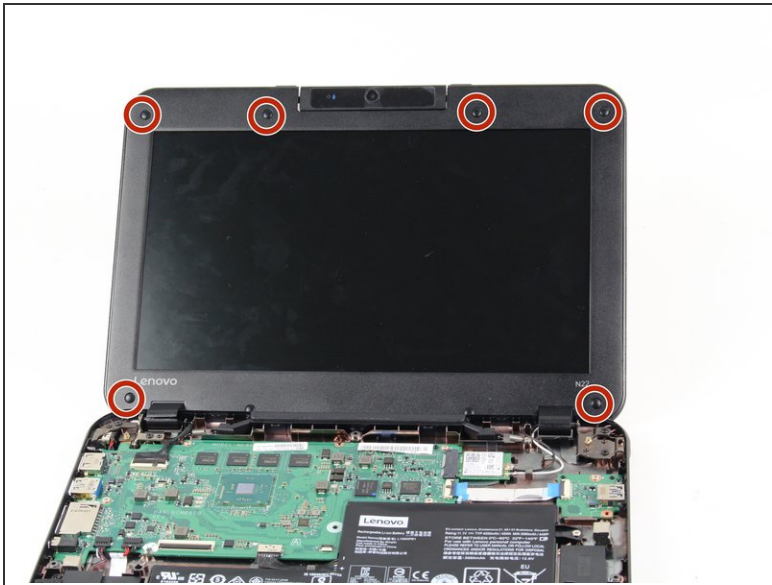
Step 5 — Screen and Camera



- Open the Chromebook all the way so that the top and bottom both lay flat on the table.
- Use the flat end of the spudger to remove the six black raised rubber circles on the front of the screen. This reveals the screws.
- ⓘ The two raised rubber circles between the laptop hinges do not need to be removed.

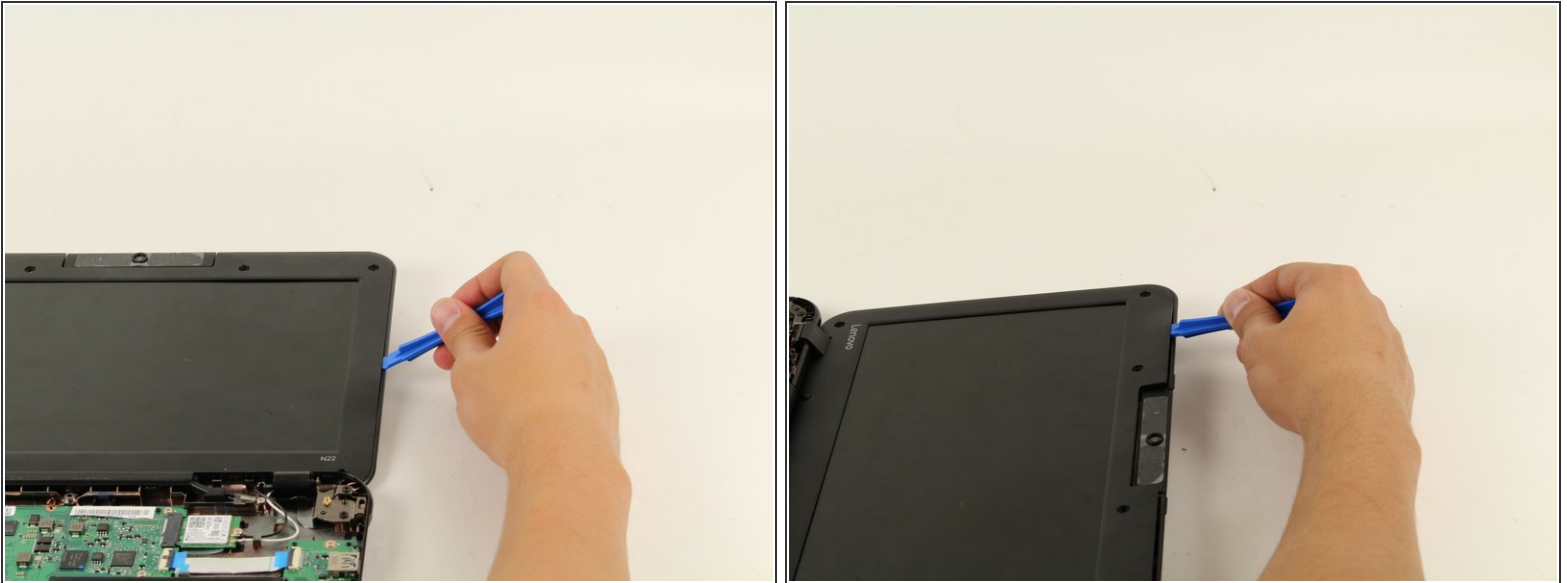
This document was generated on 2019-09-29 08:54:40 PM (MST).

Step 6



- Use a Phillips #1 screwdriver to remove the six 4mm screws. Rotate the screws to the left with the screwdriver.

Step 7



- Place the plastic opening tool in the seam between the outer casing and the screen.
- Run the plastic opening tool along the seam to disconnect the tabs attaching the panel to the outer casing until the panel moves freely.
- ⓘ While you run the plastic opening tool along the edge, several tabs will pop out.
- ⓘ It is normal for the tabs to make a loud click when released. The corner tabs will be harder to release than the others and will make a louder click when released.

Step 8



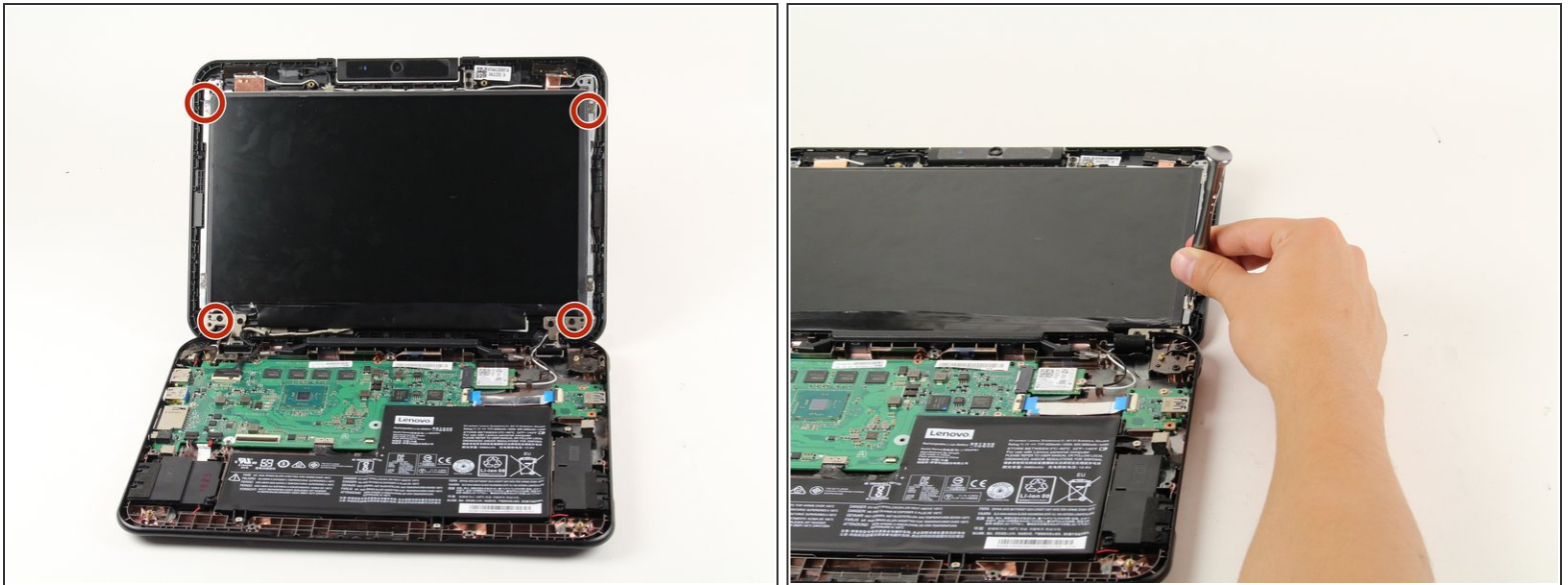
- Remove the panel from the front casing by lifting any two corners.
- ⚠ Remove the panel slowly to prevent damaging the screen connectors. An adhesive strip holds the bottom edge of the screen casing in place.

Step 9



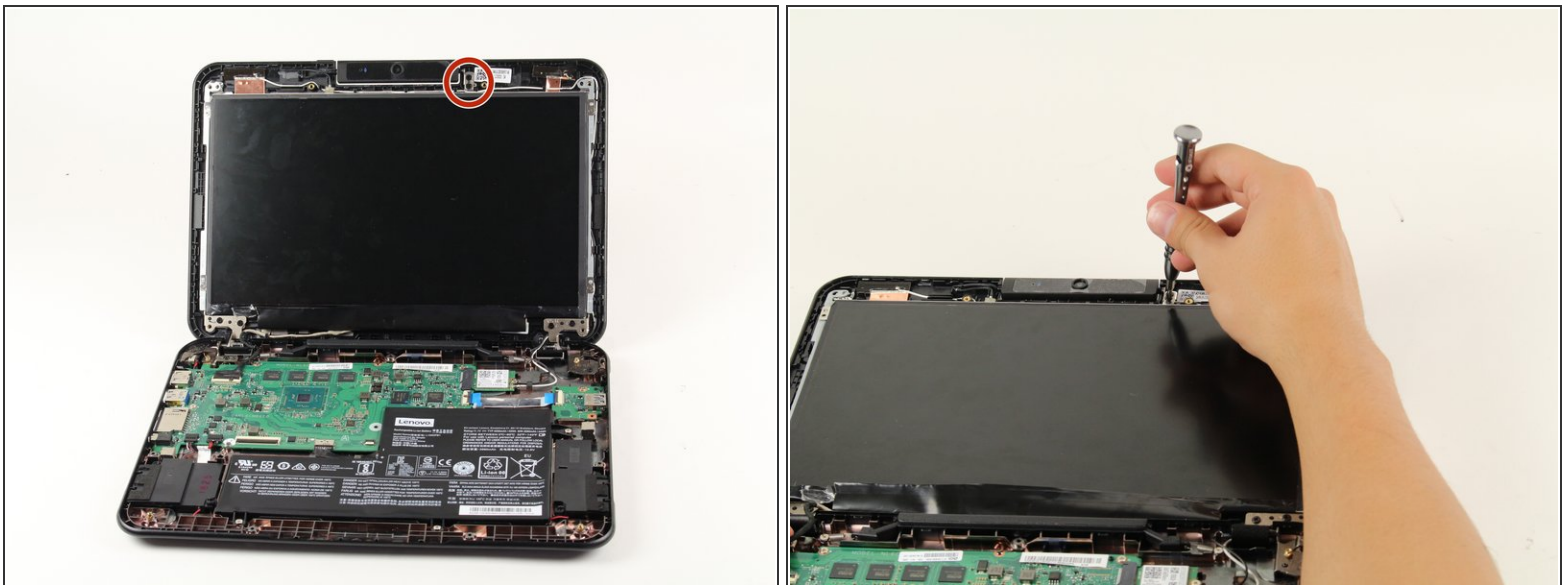
- Disconnect the cable that connects the screen to the motherboard by flipping up the small black retaining flap on the ZIF connector.
- Carefully pull the cable up towards the screen.

Step 10



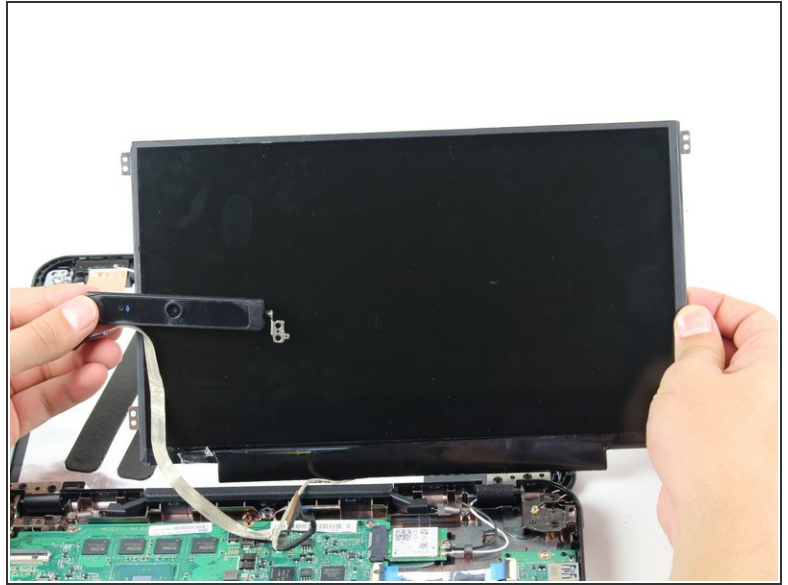
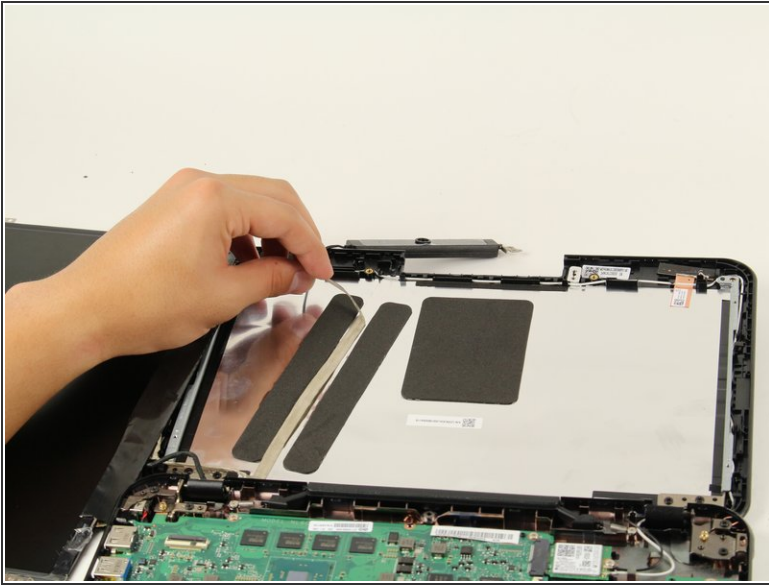
- Use a Phillips #1 screwdriver to remove the four 2.8 mm screws at each corner of the screen. Turn the screwdriver to the left to remove the screws.


Step 11



- Use a Phillips #1 screwdriver to remove the two 2.8 mm screws to the right of the camera. Turn the screwdriver to the left to remove the screws.

Step 12



-  When you lift the screen and camera out of the back casing there will be an adhesive that keeps the screen and camera attached to the metal panel. Lift the screen slowly so you do not damage the metal panel or screen.
- Slowly peel back the camera adhesive cable from the metal panel to fully remove the screen and camera.

To reassemble your device, follow these instructions in reverse order.