



Lenovo N22 Chromebook Wireless Card Replacement

This guide will show you how to remove the wireless card from the Lenovo N22 Chromebook.

Written By: Megan Louie



INTRODUCTION

This guide will show you how to remove the wireless card from your chromebook. You can replace the wireless card once you have removed it.

TOOLS:

- [Phillips #1 Screwdriver](#) (1)
 - [iFixit Opening Tools](#) (1)
-

Step 1 — Keyboard



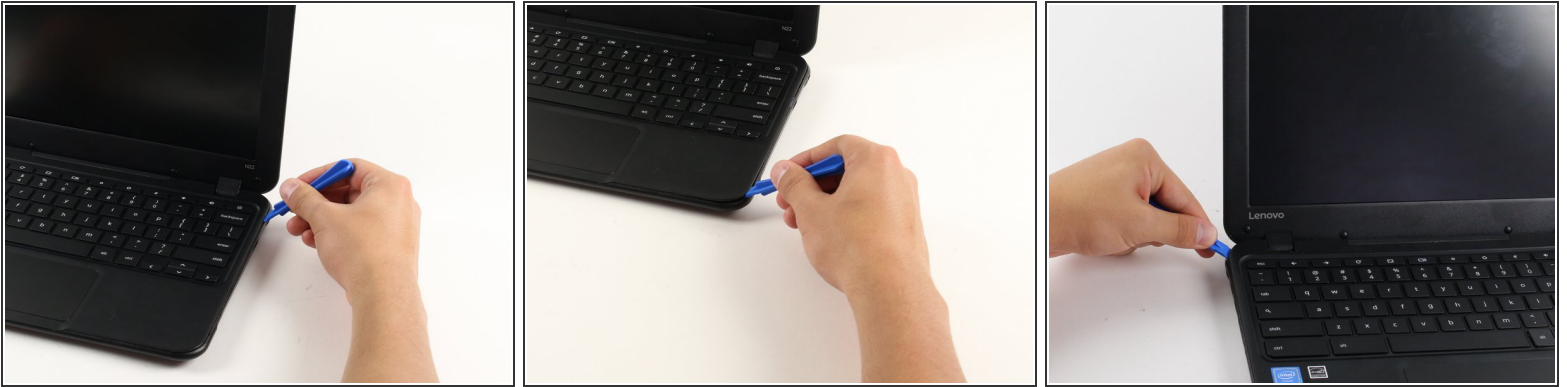
Power down the Chromebook before starting the repair.



Opening the Chromebook voids the manufacturer warranty.

- Flip the Chromebook so that the bottom is facing up.
- Use a Phillips #1 screwdriver to remove the six 6.6 mm screws on the bottom.
- Use a spudger to remove each of the 4 rubber feet.
- Use a Phillips #1 screwdriver to remove the four additional screws under the rubber feet.

Step 2



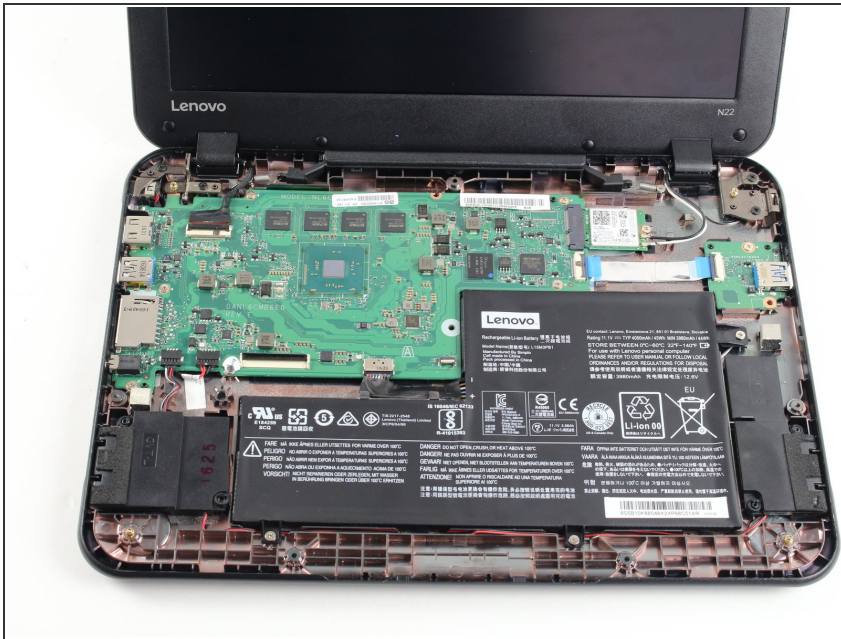
- Flip the Chromebook back over and open the screen.
 - Wedge the plastic opening tool between the keyboard and the bottom of the Chromebook.
 - Run the plastic opening tool along the seam between the keyboard and the bottom of the Chromebook until the keyboard moves freely. Several tabs will pop out.
- i** It is normal for the tabs to make a loud click when released. The corner tabs will be harder to release than the others and will make a louder click.

Step 3



- Once the keyboard is released, grab the two top corners closest to the screen and slowly lift the keyboard up.
- ⚠ Do not lift the keyboard quickly or you might break the two cables that connect the keyboard to the motherboard.
- Disconnect the cables by lifting up the retaining flaps on the black ZIF connectors.
- Slowly pull the cables up and out of the connectors.

Step 4



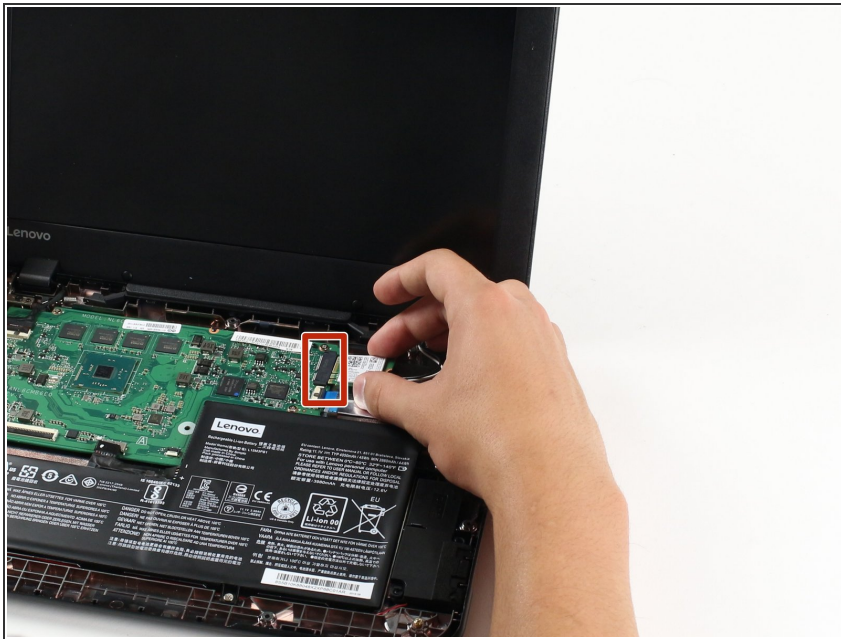
- Lift the keyboard up and off the back panel, exposing the motherboard and battery.

Step 5 — Wireless Card



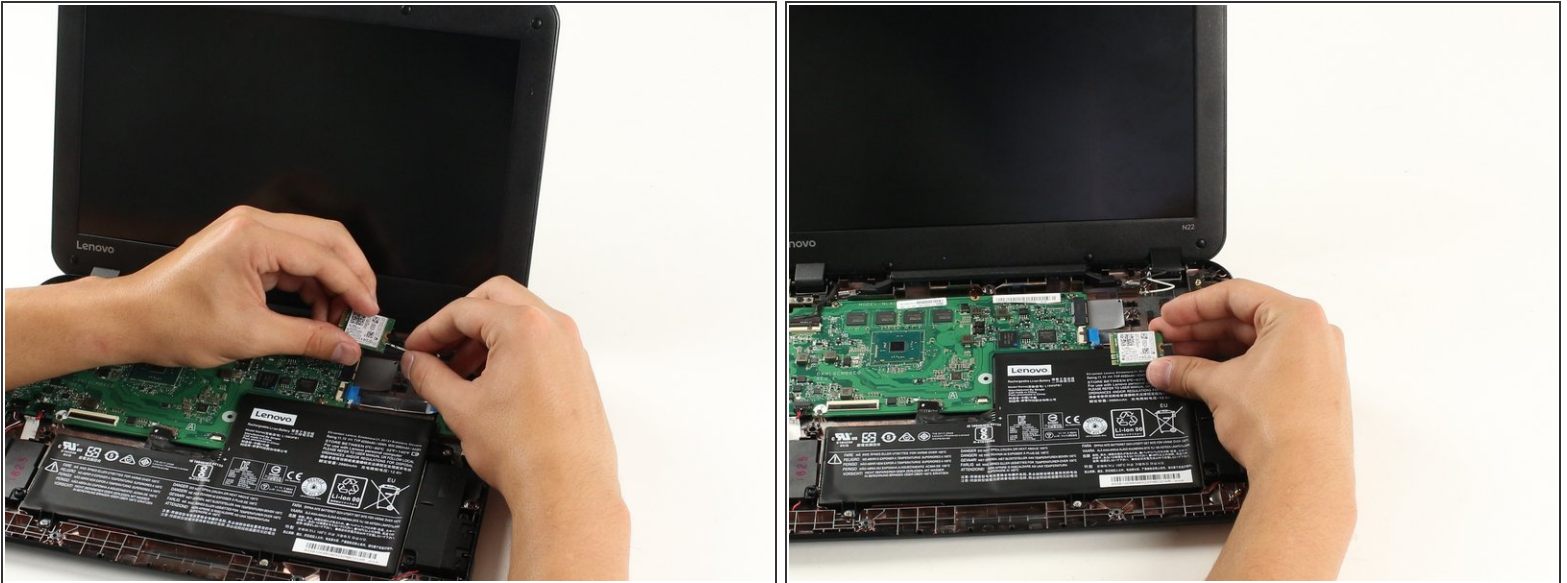
- Use a Philips #1 screwdriver to remove the 3.6 mm screw from the back panel.

Step 6



- Gently slide the wireless card to the right to remove it from the standard socket on the motherboard.

Step 7



- Grab the black and white wires as close to the antenna cable connectors as possible.
- Gently pull the black and white wires away from the antenna cable connectors on the wireless card.
- ☑ When reinstalling, place the wires on the antenna cable connectors and gently press straight down. The wires should snap back into the connector.
- ☑ When reinstalling, make sure that the white wire and the black wire are put back in their original connectors.

To reassemble your device, follow these instructions in reverse order.