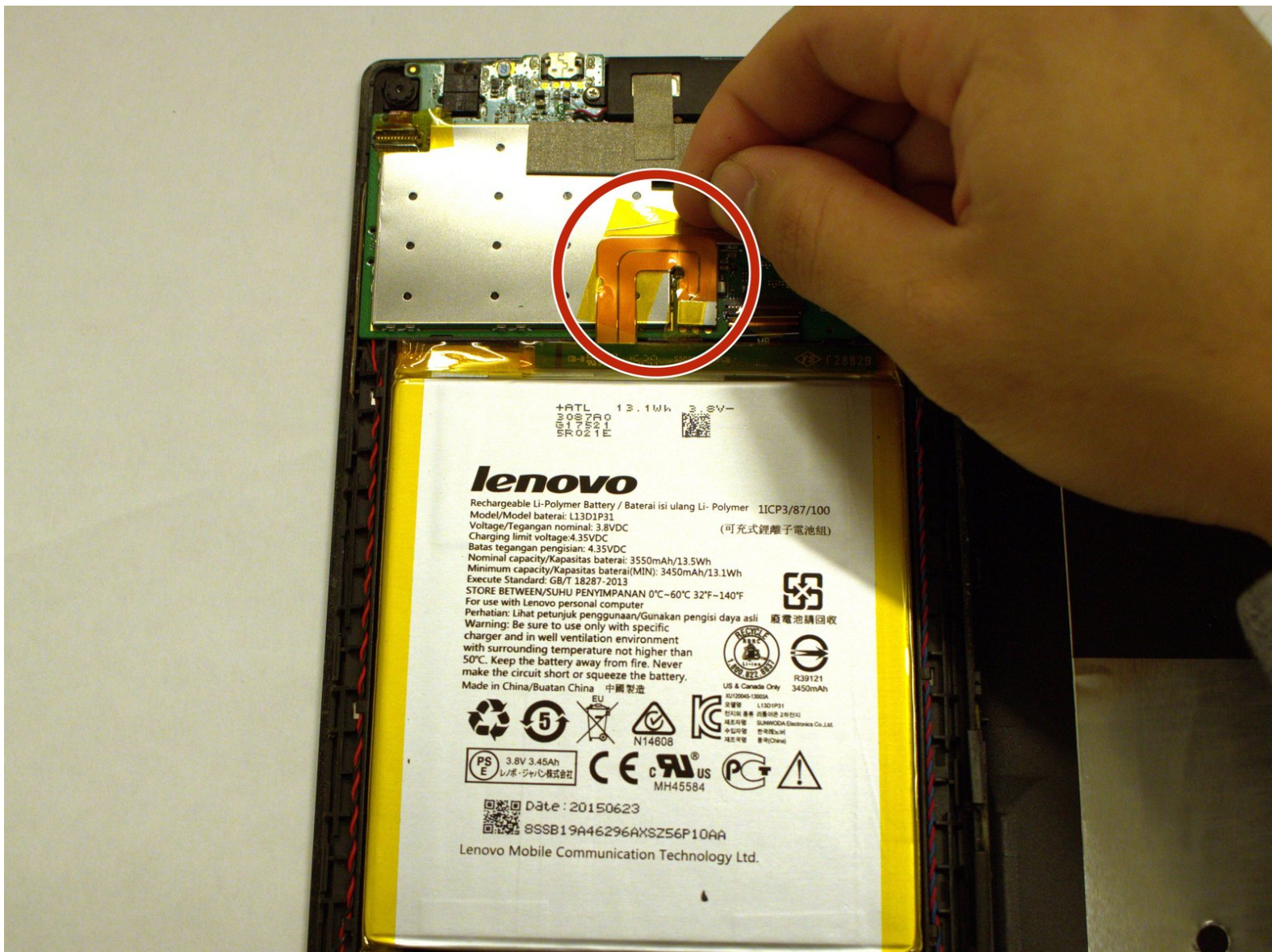




# Lenovo Tab 2 A7-20F Battery Replacement

This guide will cover removal and replacement of the Li-Ion battery.

Written By: Thanh



# INTRODUCTION

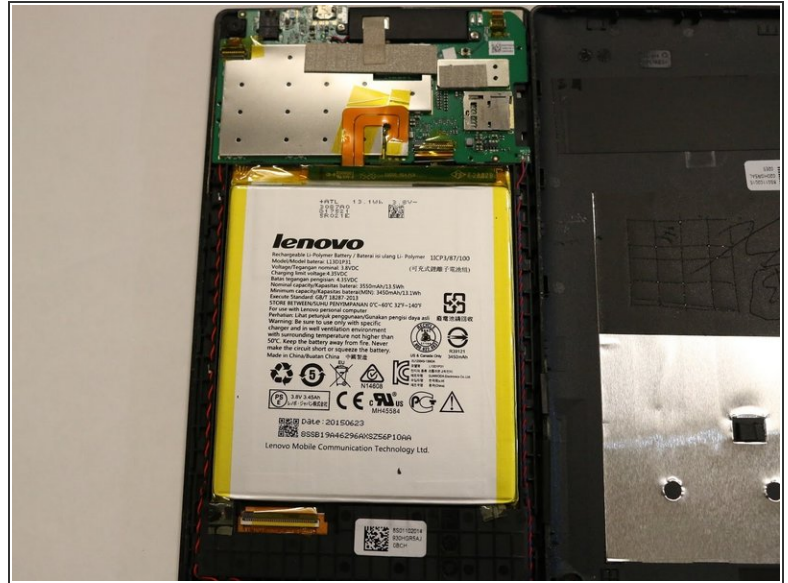
Before removing the battery, make sure that the device is totally shut off and the charger is disconnected. Also, make sure that your hands are dry and you have discharged any built up static charge by touching a good ground to avoid damaging any electric components.



## TOOLS:

- [Metal Spudger](#) (1)
  - [Spudger](#) (1)
-

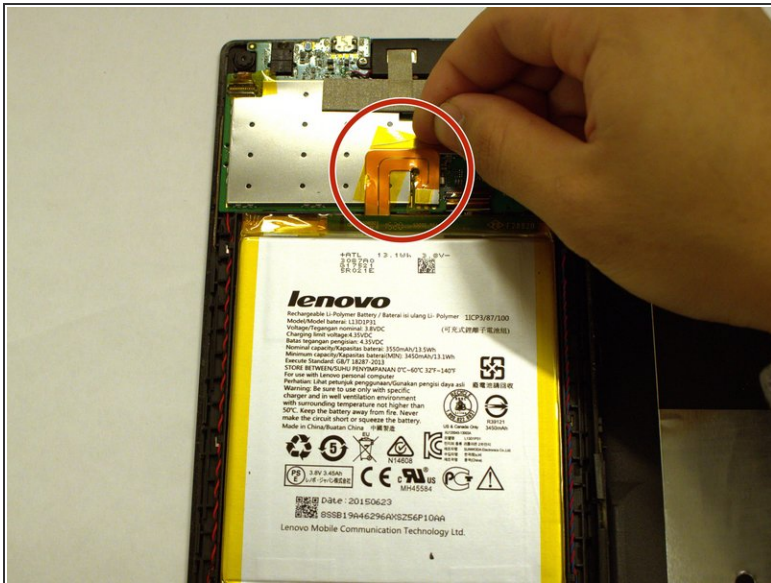
## Step 1 — Case




- Starting at any point along the seam of the case carefully pry it open with the metal spudger, slowly working your way around the outside until the case can come apart.
- ① The second photo shows the view that should greet you once the case has been taken apart.



## Step 2 — Battery



 The battery is connected to the motherboard by the thin wire shown here.

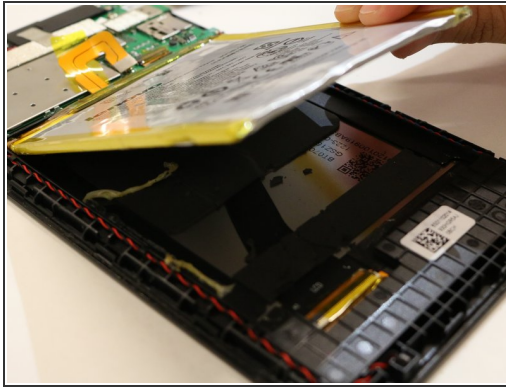
- Detach the yellow tape.


## Step 3



- Gently pull out the connector from the motherboard.

## Step 4



-  There is double-sided tape inside the case.
- Remove the double-sided tape from the case.
  - Separate the adhesive on the battery from the case.

To reassemble your device, follow these instructions in reverse order.