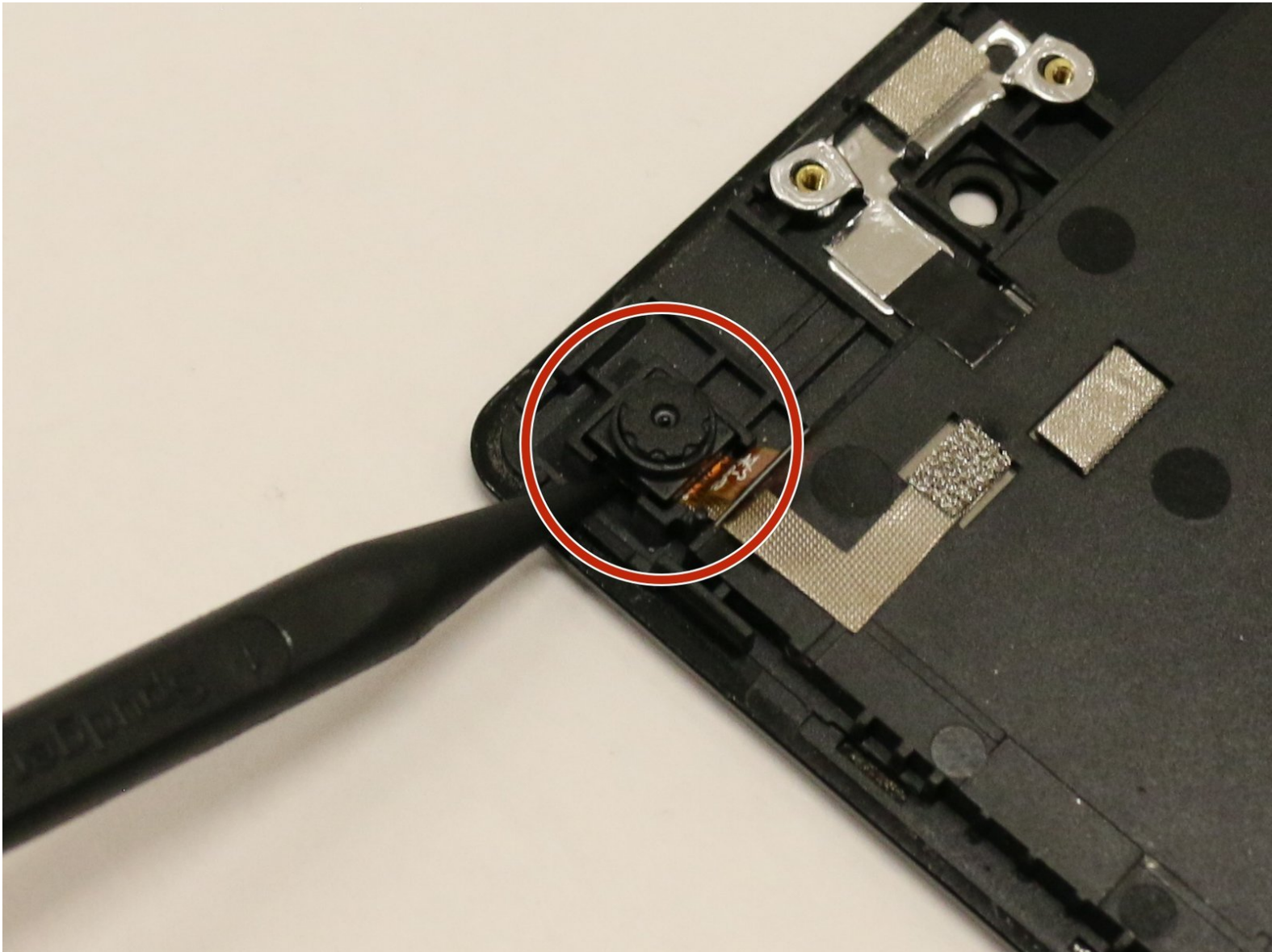




Lenovo Tab 2 A7-20F Camera Lens Replacement

This guide will demonstrate in detail the process of replacing the camera lens.

Written By: Thai Nguyen



INTRODUCTION

This guide will demonstrate in detail the process of replacing the tablets camera.

TOOLS:

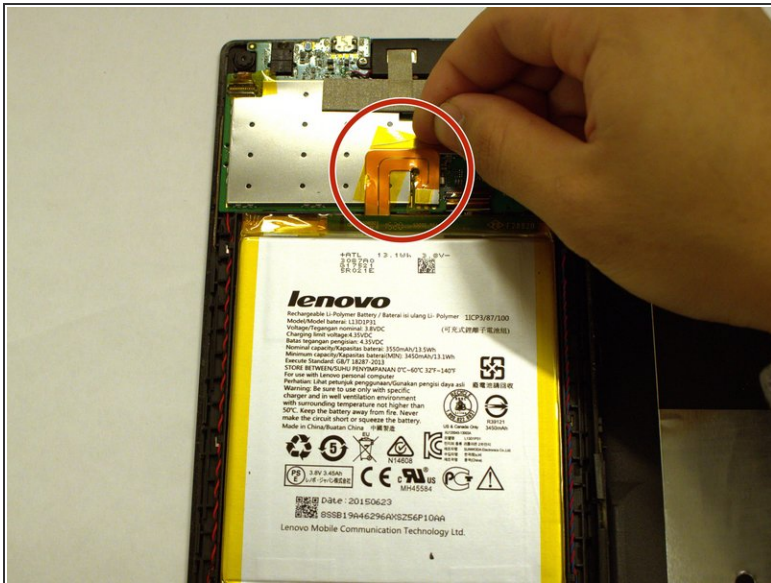
- [Metal Spudger](#) (1)
 - [Spudger](#) (1)
 - [Tweezers](#) (1)
 - [Phillips #00 Screwdriver](#) (1)
-


Step 1 — Case



- Starting at any point along the seam of the case carefully pry it open with the metal spudger, slowly working your way around the outside until the case can come apart.
- ❗ The second photo shows the view that should greet you once the case has been taken apart.

Step 2 — Battery



 The battery is connected to the motherboard by the thin wire shown here.

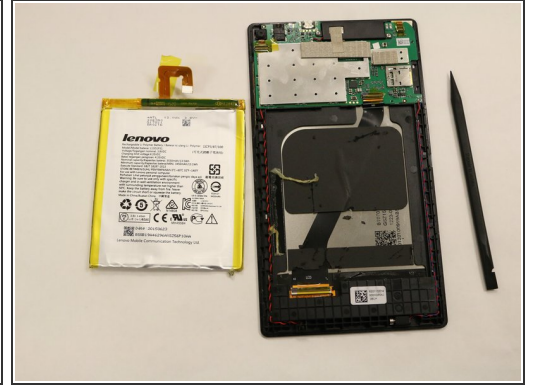
- Detach the yellow tape.


Step 3



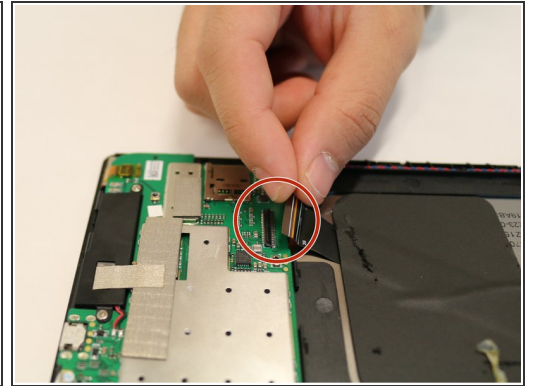
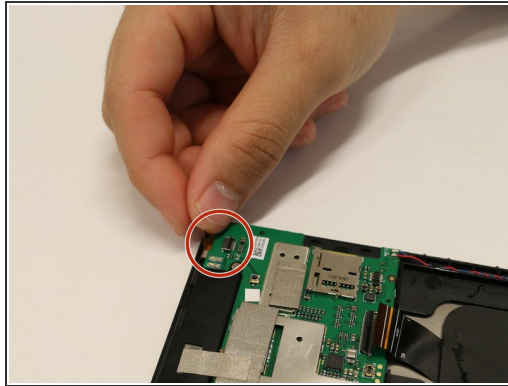
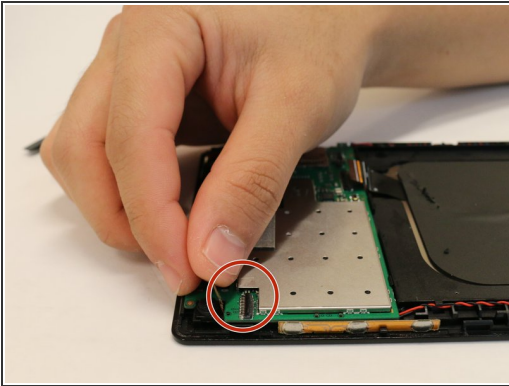
- Gently pull out the connector from the motherboard.


Step 4



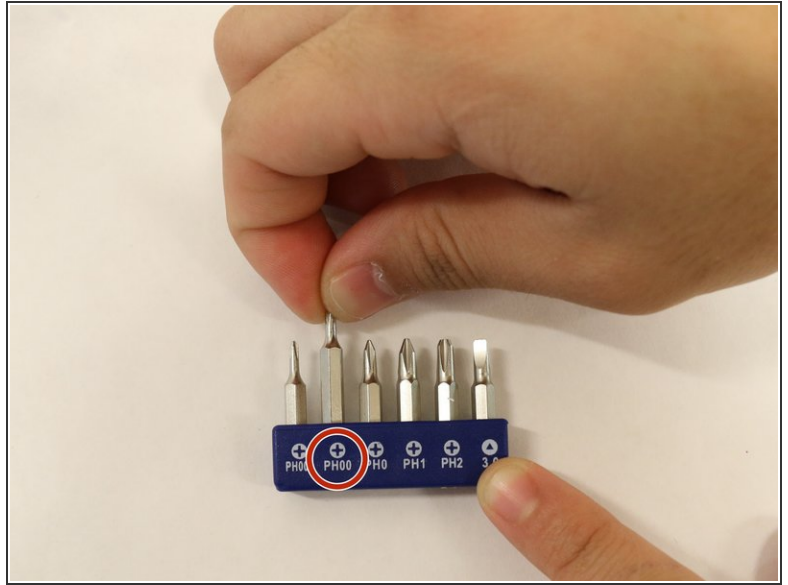
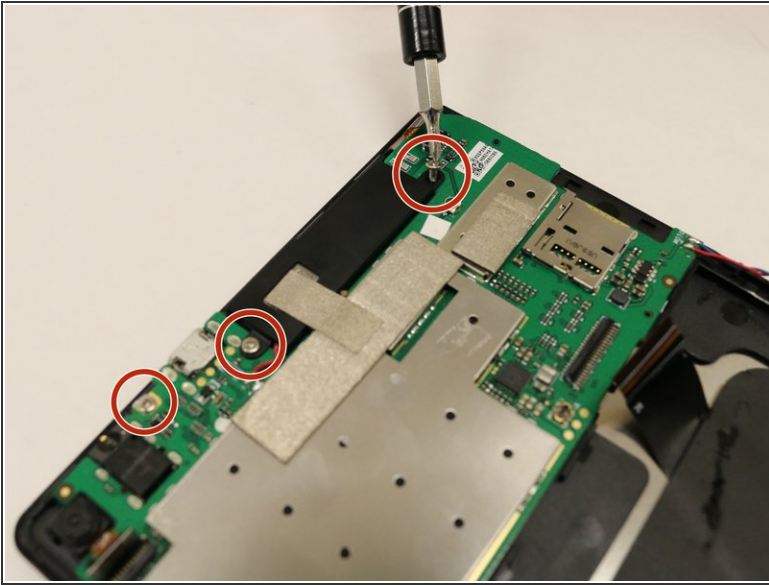
-  There is double-sided tape inside the case.
- Remove the double-sided tape from the case.
 - Separate the adhesive on the battery from the case.

Step 5 — Motherboard



- Use a plastic opening tool or a tweezer to remove any tape.
 - Unplug the electrical connectors by lifting the clip that hold them in place.
-  "Use the plastic tools first before any metal ones since they can damage the motherboard easily".

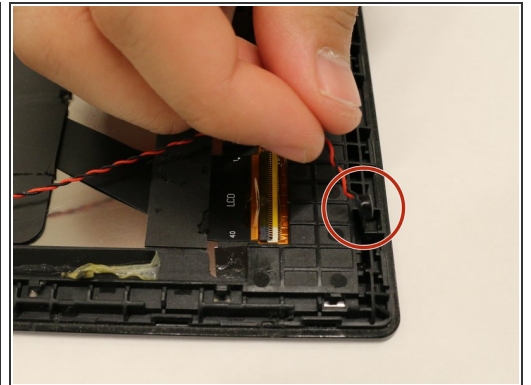
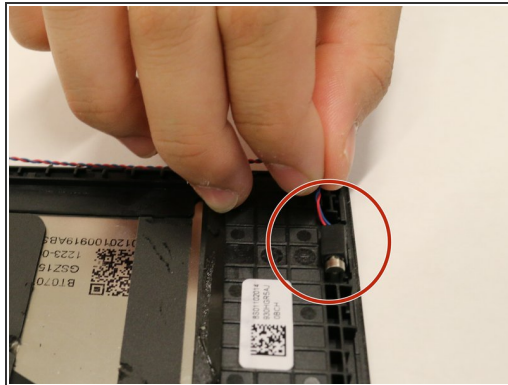
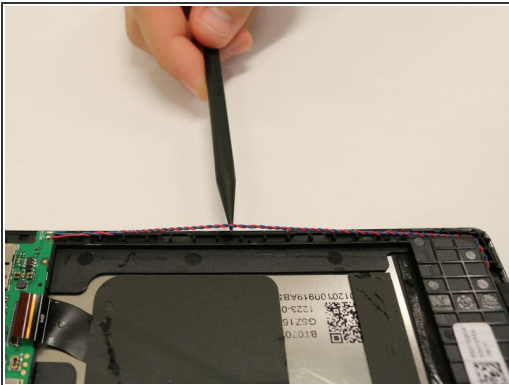
Step 6



- Remove the three 2.0mm screws using the Phillips #00 Screwdriver bit.

⚠ These screws are very small and can be lost easily. The black strip at the top of the motherboard is the speaker and the screws can be placed on that because it is magnetic.

Step 7

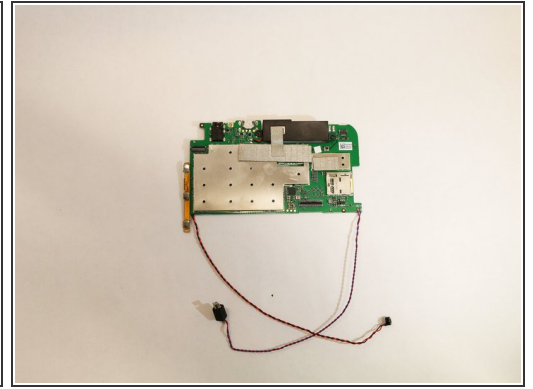
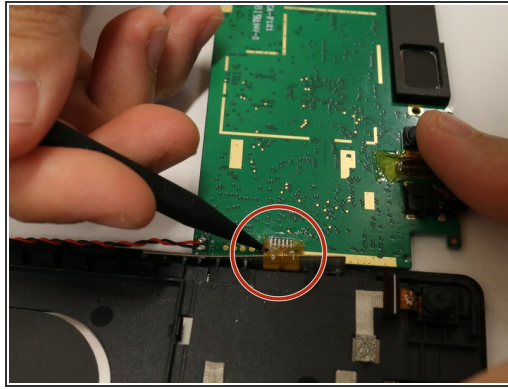
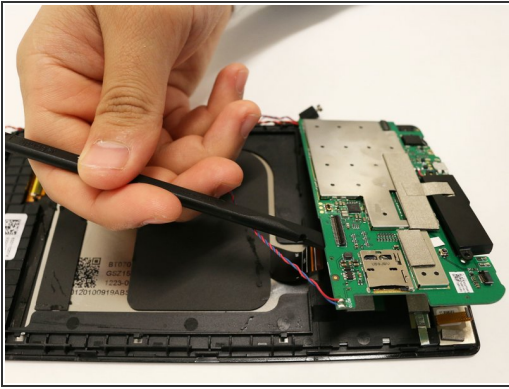



i There are two twisted pairs of wires on the left and right edges of the case.

- Use a plastic opening tool or tweezers to remove the twisted pairs that are held in place by retaining tabs.

⚠ These wires lead to objects that need to be carefully lifted from their enclosures at the base of the case using tweezers.

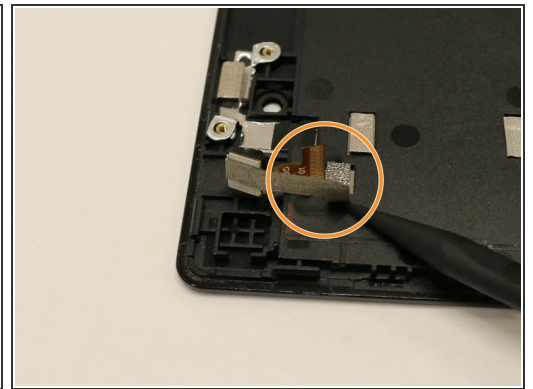
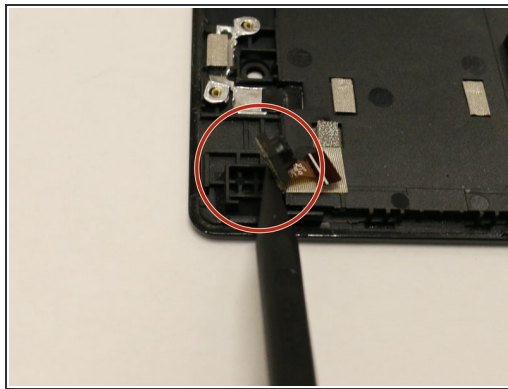
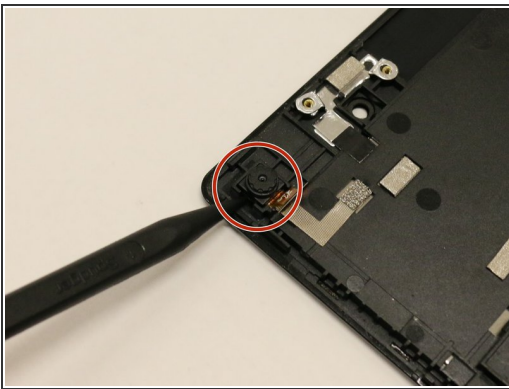
Step 8




 After taking out the twisted pairs, there is still one more strip that needs to be removed. It is located off the side of the motherboard and is the piece that receives input for volume and power.

- Gently lift up the motherboard starting from the right side. The final strip can be removed by gently pulling it up from the case.
- Remove the motherboard completely from the back panel.

Step 9 — Camera Lens



 The camera lens is located at top left corner of the back panel.

- Use the plastic opening tool to lift up the camera lens starting from the left side between the gap.
- Remove the metal tape that connects the camera lens to the panel in order to remove the camera lens.

To reassemble your device, follow these instructions in reverse order.