



Lenovo Tab 2 A8 Motherboard Replacement

Have a malfunctioning motherboard? This guide will show you how to replace it.

Written By: James Bailey



INTRODUCTION

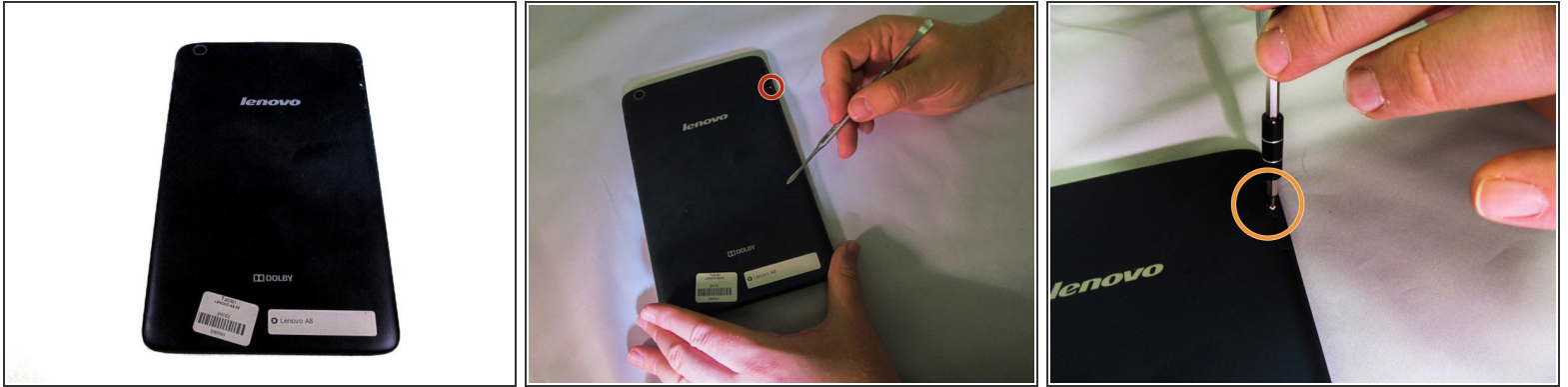
This guide details the removal process for the motherboard.



TOOLS:

- [Metal Spudger](#) (1)
 - [Phillips #000 Screwdriver](#) (1)
 - [Tweezers](#) (1)
-

Step 1 — Removing the Back Panel



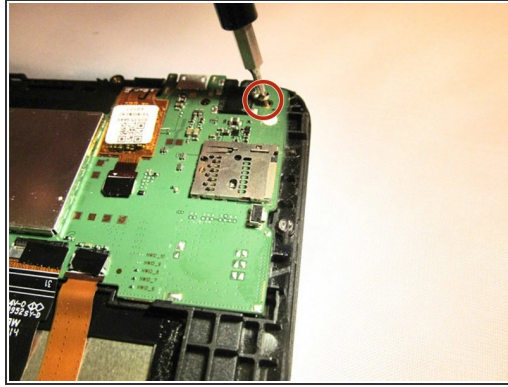
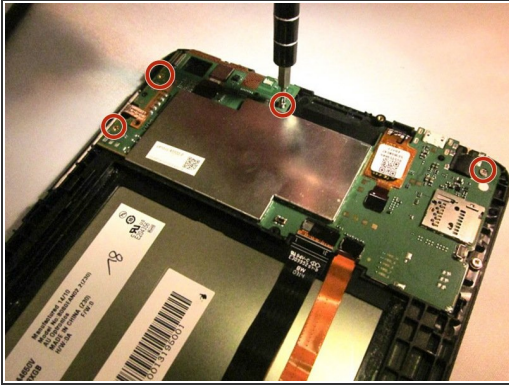
- Place the tablet face down on a soft, stable surface that will protect the screen.
- Next, Scrape off the seal over the screw in the back of the tablet with a Metal Spudger.
- Use the Phillips #000 Screwdriver to remove the M1.4 × 2.5 screw.
- ⓘ If the seal covering the screw has already been removed, please proceed to the next step in the process.
- ⓘ As the screw is small, you may wish to extract it using a pair of tweezers.

Step 2



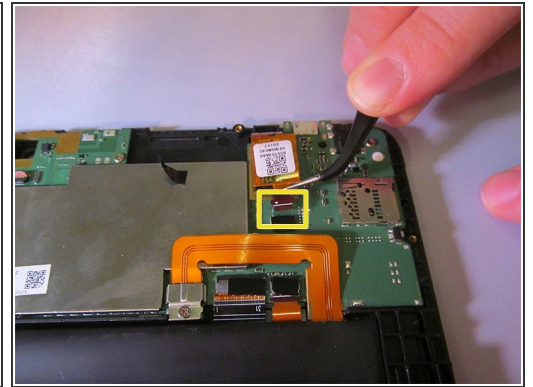
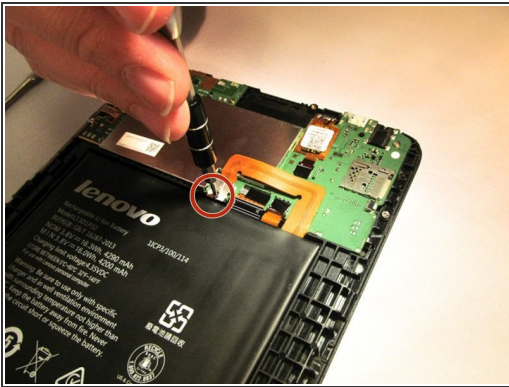
- Starting on the side, work your way around the the tablet to pop off the back cover. You will want to utilize a metal Spudger for this.
- ⓘ Some force may be required initially to pry the back cover off.
- ⓘ Note that the button tabs for this device are loose inside the case and will fall out when opening.

Step 3 — Motherboard



- Using the Phillips #000 screwdriver, remove the four M1.4 × 2.5 screws holding the motherboard in place.
- ⓘ Because the screws are small, it is a good idea to remove them with a pair of tweezers.

Step 4



- Remove the M1.4 × 2.5 screw securing the battery lead to the battery with the Phillips #000 screwdriver.
- With a pair of tweezers, gently move the battery lead so it will not obstruct the motherboard.
- With a pair of tweezers, carefully unplug the strip connecting the screen to the motherboard.
- ⓘ The strip connecting the screen to the motherboard is firmly in place and may require some careful use of strength to unplug it.

Step 5



- Remove the motherboard by lifting the top edge and pulling outward to free it from the small tabs that hold it in place.

⚠ The small tabs can be broken if the motherboard is pried up too forcefully.

⚠ The button tabs are fastened to the motherboard by a small adhesive strip. Take care in removing the motherboard to avoid tearing the wires.

To reassemble your device, follow these instructions in reverse order.