



# Lenovo Tab S8 Battery Replacement

Replace the battery in the Lenovo Tab S8.

Written By: Temi Adegoke



# INTRODUCTION

If your battery seems to drain quickly while in standby mode, just follow the simple steps in this guide and you will be back in business in no time!



---

## TOOLS:

- [Metal Spudger](#) (1)
  - [64 Bit Driver Kit](#) (1)
  - [Spudger](#) (1)
-

## Step 1 — Battery



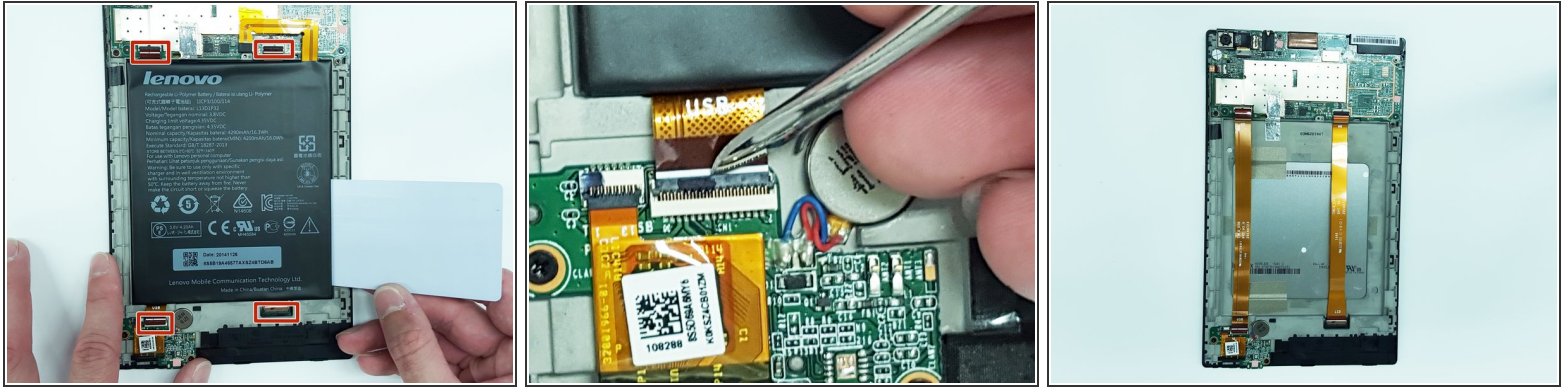
-  Make sure the device is powered off.
- Gently insert a spudger into one of the bottom corners between the screen and body case.
- Slide the spudger along the inside of the crack in order to pry the case open.
-  Be careful of the small volume and power buttons when prying the case with the spudger. They are connected with small pieces of plastic that break easily.


## Step 2



- After the cover has been removed, unscrew the M1.6 x 2mm screw from the battery cable with a j000 Philips head bit.
- ⚠ Using screwdriver bits that do not fit snugly in the screw head have a tendency to strip the screw and render it unusable.
- Remove the tape by gently scraping the edges up with a spudger.

## Step 3



 The ribbon cables under the battery need to be detached from other electronics as a precaution in case the ribbon cables remain stuck to the battery during removal.

- Gently lift the flaps on the four ZIF connectors.
- Use a plastic card to gently pry the battery from the device.
- ① There may be glue holding the bottom of the battery to the housing, so it is best to use a card to pry the battery away from its housing. If there is resistance, use a spudger to detach the glue while the battery is partially raised.

To reassemble your device, follow these instructions in reverse order.