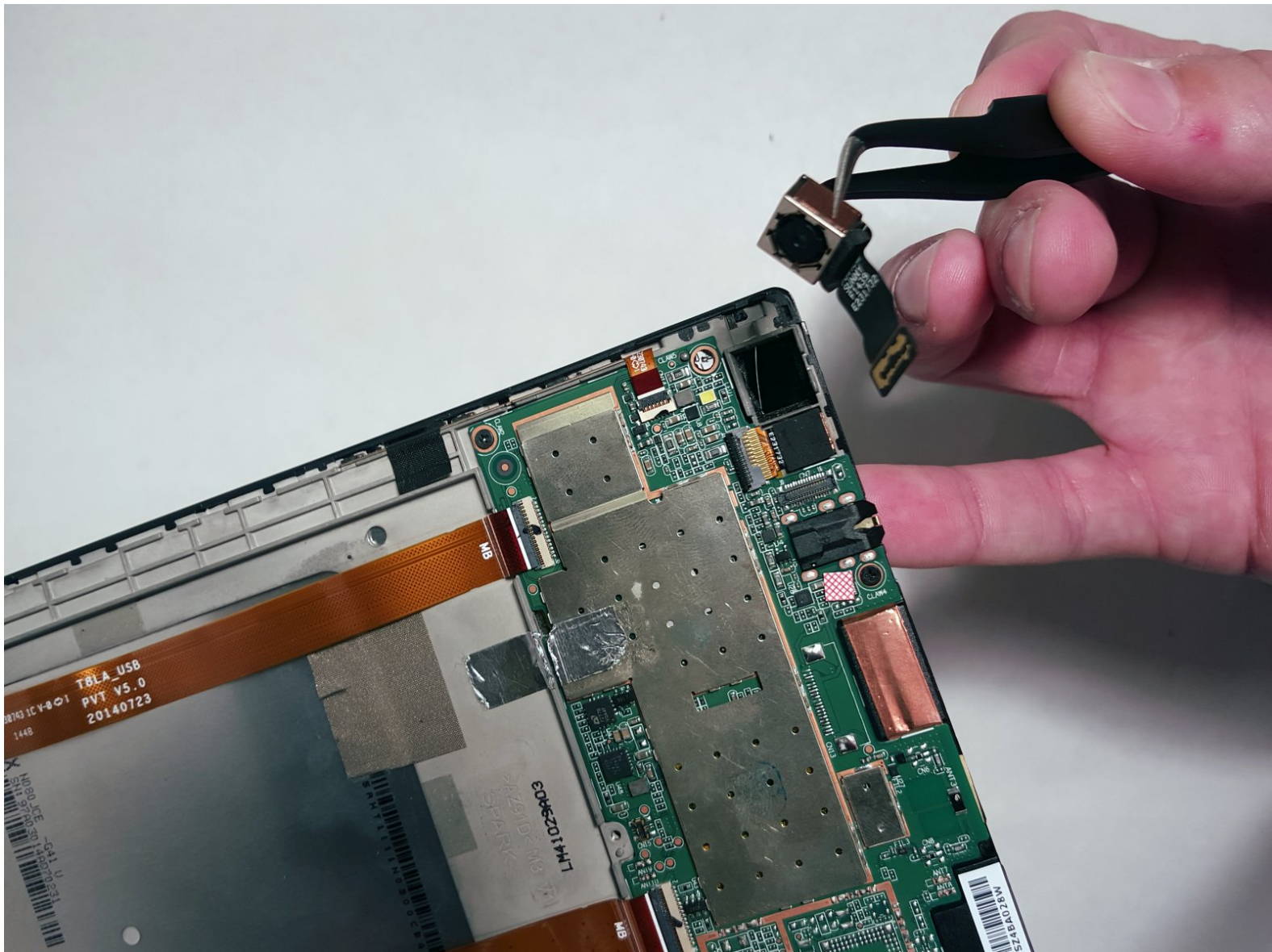




Lenovo Tab S8 Camera Replacement

Replace the camera hardware in the Lenovo Tab S8.

Written By: Thomas Rill



INTRODUCTION



In this guide, moving the camera is the main focus. Digital cameras themselves are very complex, however, this guide will show you just how easy it is to replace one.

TOOLS:

- [Spudger](#) (1)
 - [Screwdriver Phillips J000](#) (1)
 - [Tweezers](#) (1)
-

Step 1 — Battery



-  **Make sure the device is powered off.**
- Gently insert a spudger into one of the bottom corners between the screen and body case.
- Slide the spudger along the inside of the crack in order to pry the case open.
-  **Be careful of the small volume and power buttons when prying the case with the spudger. They are connected with small pieces of plastic that break easily.**


Step 2



- After the cover has been removed, unscrew the M1.6 x 2mm screw from the battery cable with a j000 Philips head bit.
- ⚠ Using screwdriver bits that do not fit snugly in the screw head have a tendency to strip the screw and render it unusable.
- Remove the tape by gently scraping the edges up with a spudger.

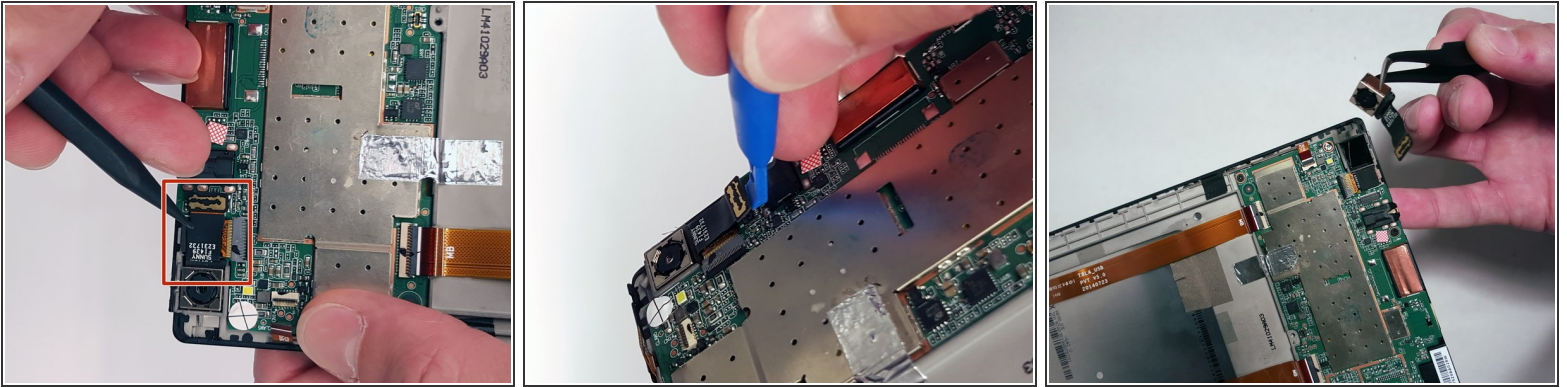
Step 3



 The ribbon cables under the battery need to be detached from other electronics as a precaution in case the ribbon cables remain stuck to the battery during removal.

- Gently lift the flaps on the four ZIF connectors.
- Use a plastic card to gently pry the battery from the device.
- ① There may be glue holding the bottom of the battery to the housing, so it is best to use a card to pry the battery away from its housing. If there is resistance, use a spudger to detach the glue while the battery is partially raised.

Step 4 — Camera



- Use a plastic opening tool to gently pry the end of the camera's black ribbon cable (opposite the camera lens) off of the motherboard.
- Once the cable is free, use tweezers to pull the camera from the body.
- ⓘ The camera may be stuck in place with a piece rubber foam. Take care to not damage the camera by applying too much pressure.

To reassemble your device, follow these instructions in reverse order.